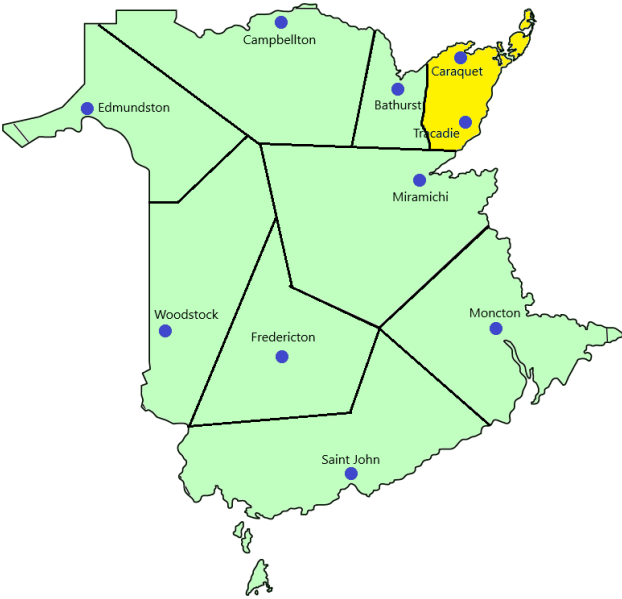
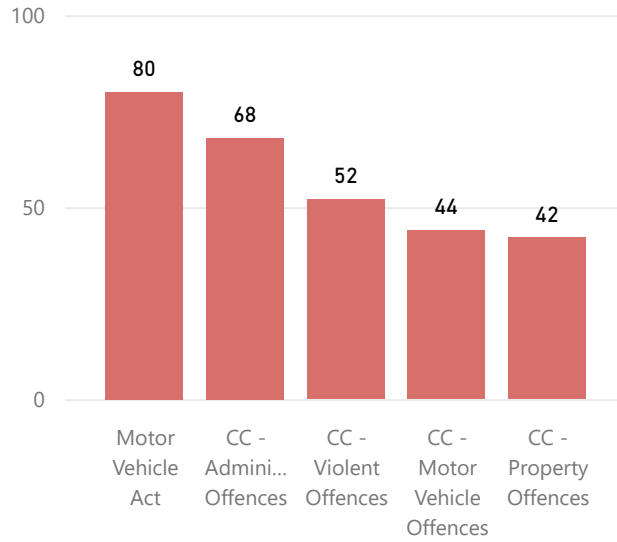


# Provincial Court Dashboard - Peninsula Courthouses - 4th Quarter of 2021

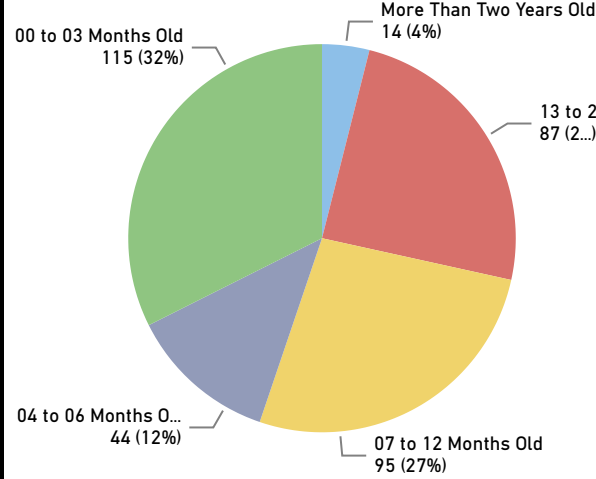
## Area of Coverage



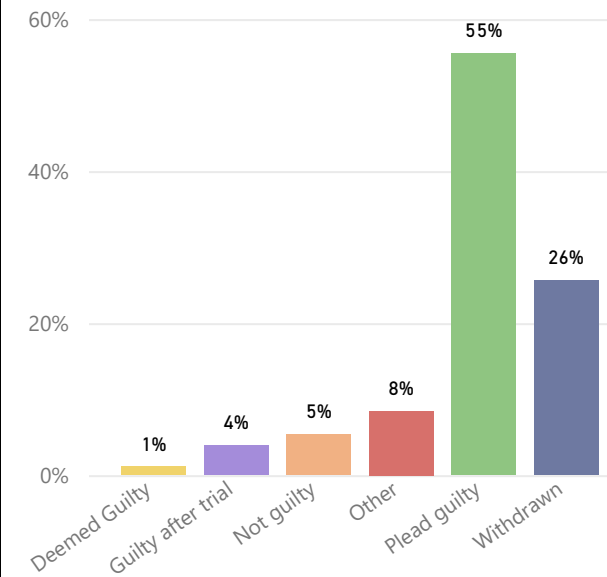
## Charges Resolved - Top 5 Offence Type



## Age of Resolved Charges



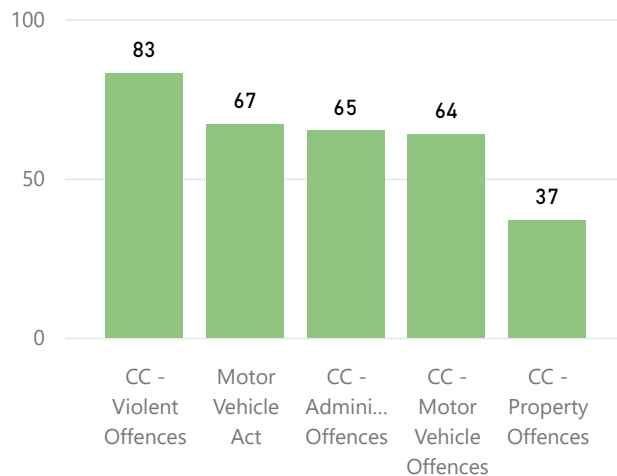
## Outcome of Charges Resolved



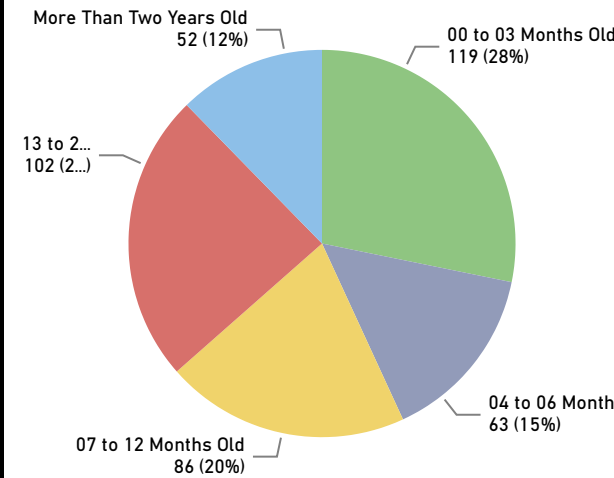
## Provincial Courtroom Allocations

Courthouse	Active Courtrooms	Total Courtrooms
Peninsula	2 x 0.5	2

## Unresolved Charges - Top 5 Offence Type



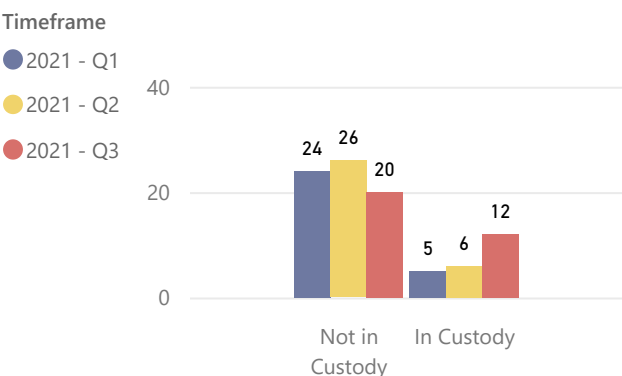
## Age of Unresolved Charges



## Quarter's Case Load Performance

Starting Balance	512
+ Charges Laid	265
- Charges Resolved	355
<b>= Ending Balance</b>	<b>422</b>
Difference	<b>-90</b>

## Court Delays - # of Weeks



**Decreasing Backlog of Charges**