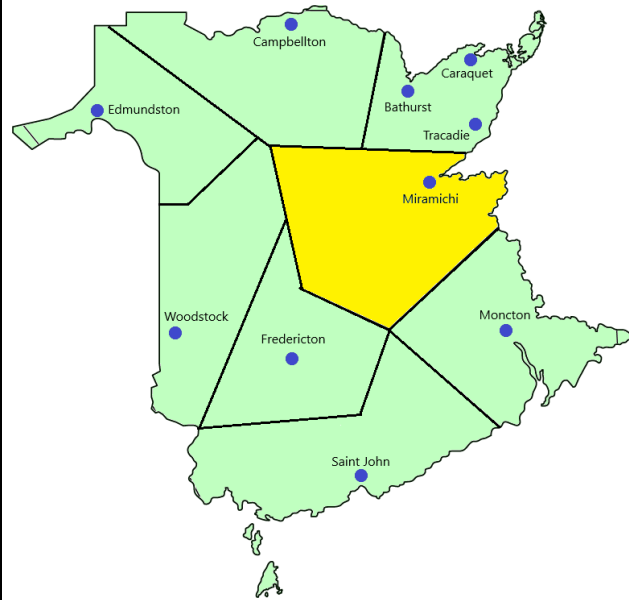
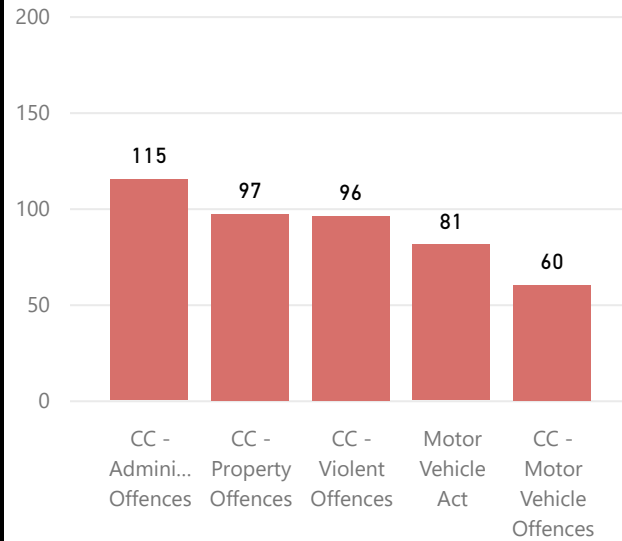


Provincial Court Dashboard - Miramichi Courthouse - 4th Quarter of 2021

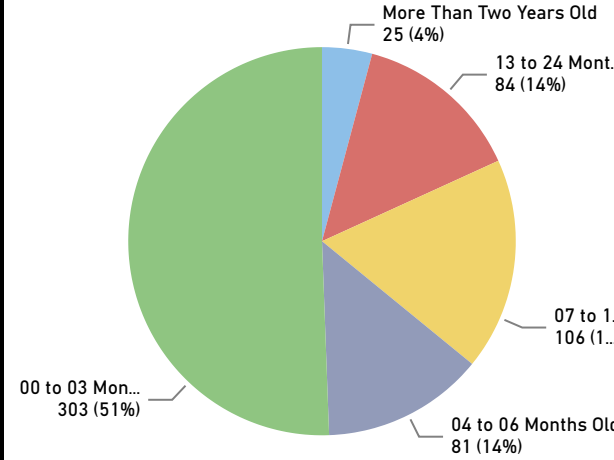
Area of Coverage



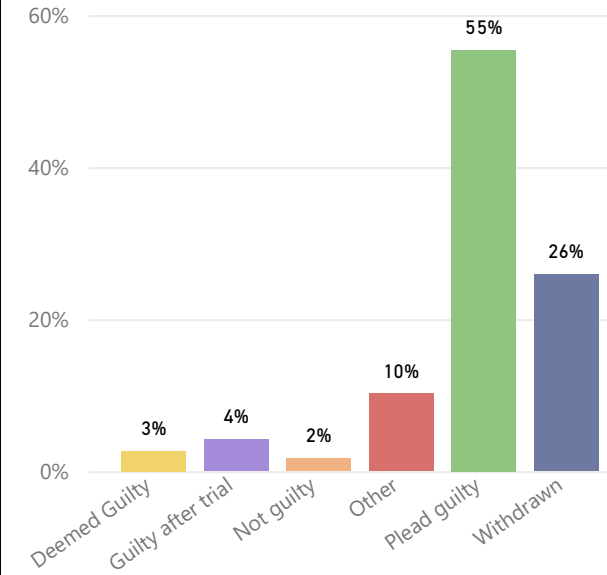
Charges Resolved - Top 5 Offence Type



Age of Resolved Charges



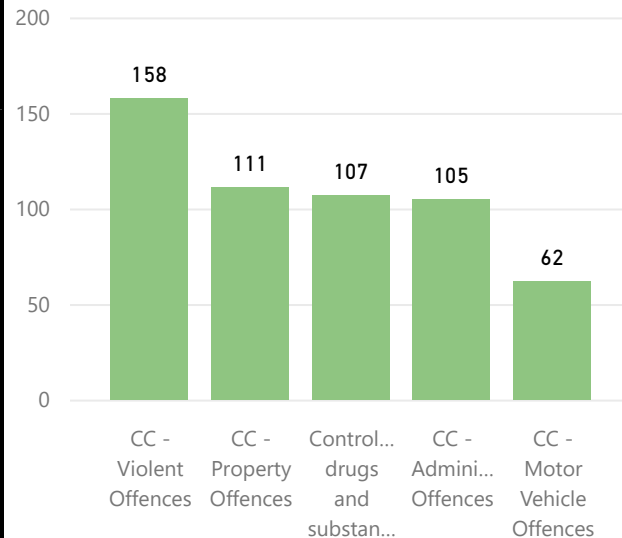
Outcome of Charges Resolved



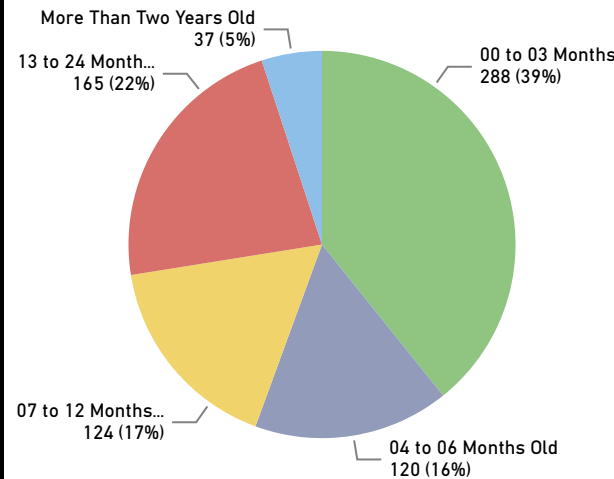
Provincial Courtroom Allocations

Courthouse	Active Courtrooms	Total Courtrooms
Miramichi	2	2

Unresolved Charges - Top 5 Offence Type



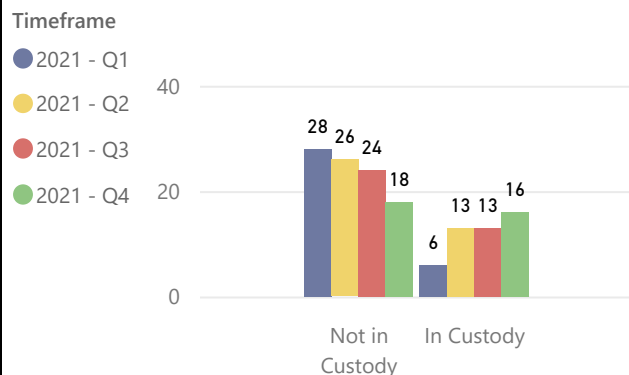
Age of Unresolved Charges



Quarter's Case Load Performance

Starting Balance	733
+ Charges Laid	600
- Charges Resolved	599
= Ending Balance	734
Difference	1

Court Delays - # of Weeks



Growing Backlog of Charges