

Appendix B Figures

Figure 1 – Overall Location Plan

Figure 2 – Project Site Plan

Figure 3 – Existing WWTF Conditions

Figure 4 – Alternate WWTF Site Location and Surrounding Land Use

Figure 5 – Existing Conditions GSSC WWTP

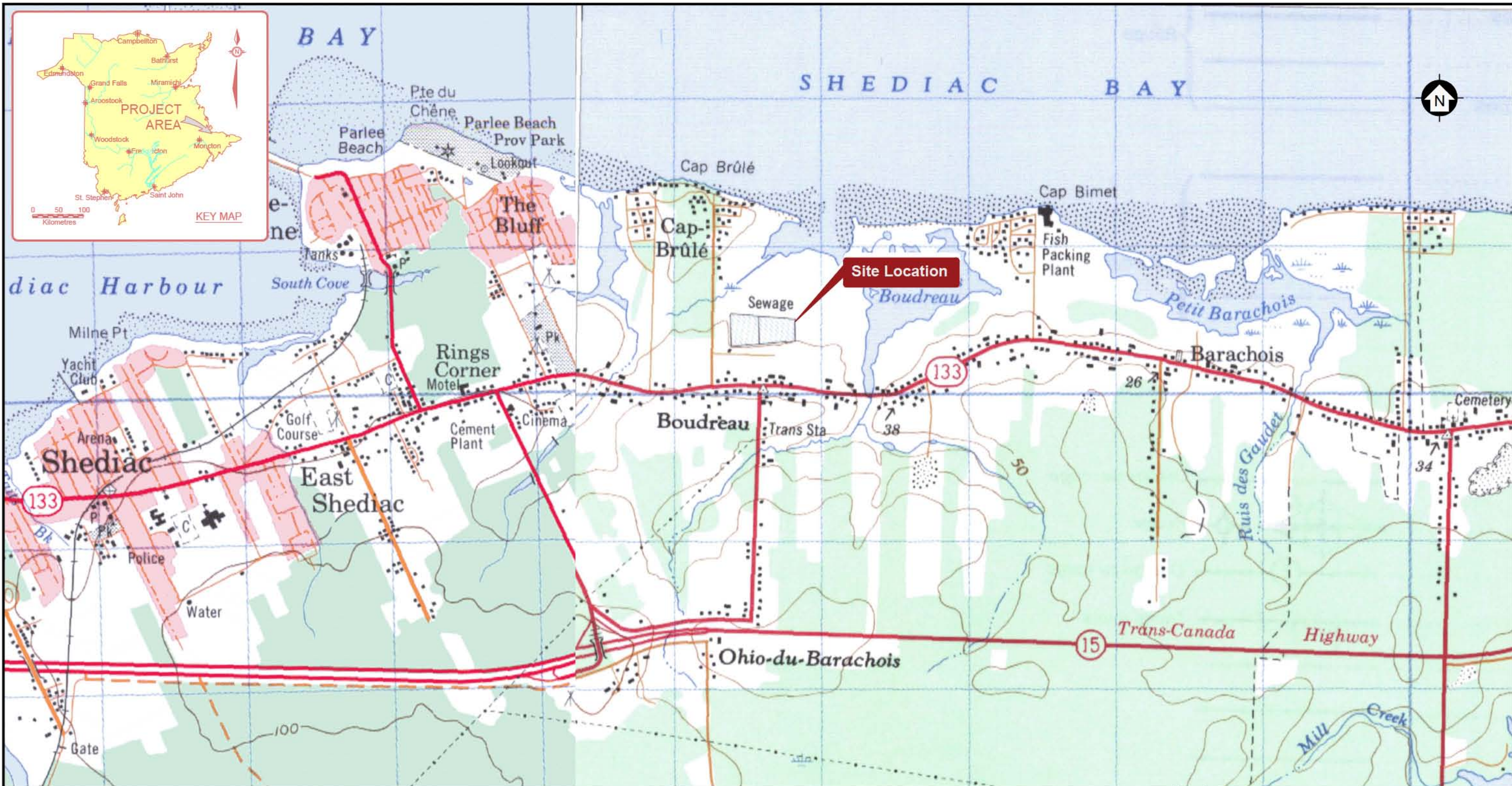
Figure 6 – Overall Site Plan and Preliminary Design

Figure 7 – Proposed Outfall Concept

Figure 8 – Stages of Treatment – Existing Facility

Figure 9 – Residences Located Within 150m of Site

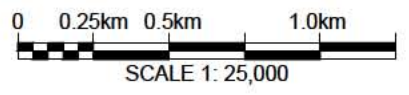
Figure 10 – Zoning Map



Greater Shediac Sewerage Commission



Englobe Corp.
 1077 St. George Blvd., Suite 400
 Moncton, NB E1E 4C9
 506-857-2777



CONFIDENTIALITY STATEMENT. This document, protected by law, is the property of Englobe and is for the sole use of the intended purpose. Any distribution or modification, partial or total, is strictly prohibited without prior written approval from Englobe Corp.

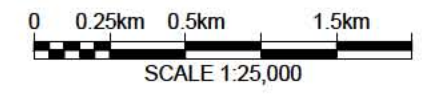
Greater Shediac Sewerage Commission
 Cap - Brule Wastewater Treatment Facility
 EIA Registration Document
 Shediac, New Brunswick

FIGURE 1: Overall Location Plan

Issued for EIA Registration Document	Oct. 2020	JJ	JM	CG
No.	Version	Date	By	Verif
Discipline:	Environment	Prepare by:	JM	Verify by:
Scale:	1: 25,000	Draw by:	JJ	Approval by:
Date:	October 2020	Figure no.:		1
Page setup:	Paper size:	Register no.:		
Drawing 1	ANSI full bleed B (11.00 x 17.00 inches)			
Man.	Project	Otp	Project Phase	Electronic ref.
148	2003869			Rev.



Greater Shediac Sewerage Commission



Greater Shediac Sewerage Commission
Cap - Brule Wastewater Treatment Facility
EIA Registration Document
Shediac, New Brunswick



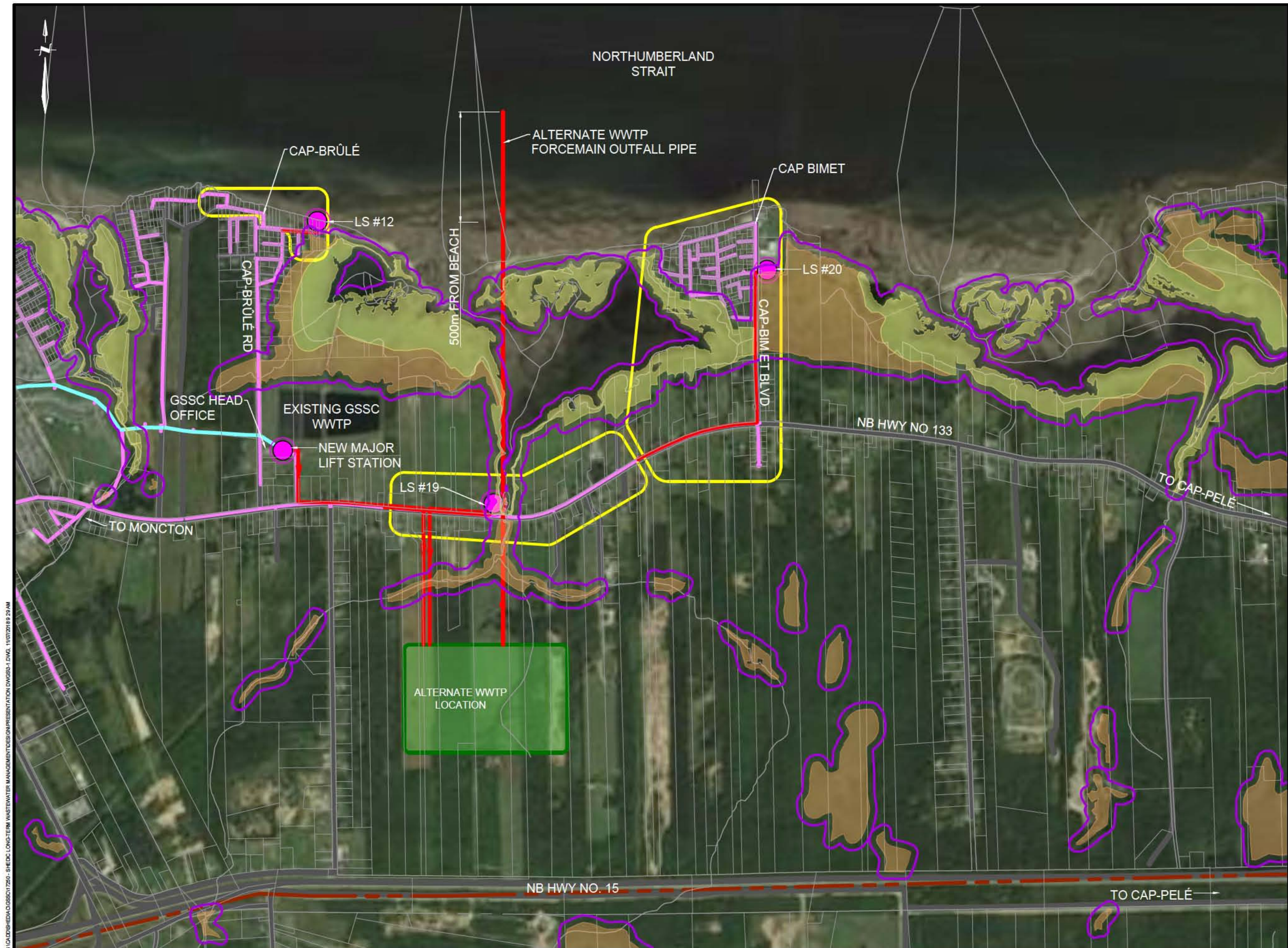
Englobe Corp.
1077 St. George Blvd., Suite 400
Moncton, NB E1E 4C9
506-857-2777

CONFIDENTIALITY STATEMENT. This document, protected by law, is the property of Englobe and is for the sole use of the intended purpose. Any distribution or modification, partial or total, is strictly prohibited without prior written approval from Englobe Corp.

REF: Site Plans by Dillon 2001 and 2009, as well as Amec Foster Wheeler 2016 and 2017.

FIGURE 2: Project Site Location

Issued for EIA Registration Document		Oct. 2020	JJ	JM	CG
No.	Version	Date	By	Verif	Appr.
Discipline:	Environment		Prepare by:	Verify by:	
Scale:	1: 25,000		Draw by:	JJ	Approval by: CG
Date:	October 2020		Figure no.:	2	
Page setup:	Paper size:		Register no.:		
Drawing 2	ANSI full bleed B (11.00 x 17.00 inches)				
Man.	Project	Otp	Project Phase	Electronic ref.	Rev.
148	2003869				



G:\04\SHEDIAC\GSSC\17260 - SHEDIAC LONG-TERM WASTEWATER MANAGEMENT\DESIGN PRESENTATION DWG\03-1.DWG, 11/07/2018 9:28 AM

NOTES

- PROVINCIAL SIGNIFICANT WETLAND (PSW)
- REGULATED WETLANDS MAP (RWM)
- PSW - 30m BUFFER
- RWM - 30m BUFFER
- BOUNDARY OVERFLOW
- EXISTING LIFT STATIONS

0.0	OCT. 09/20	ISSUED FOR EIA REGISTRATION	TWA	
NO.	DATE	REVISIONS	BY	APPR.

GREATER SHEDIAC SEWERAGE COMMISSION
DES ÉGOUTS SHEDIAC ET BANLIEUES

Englobe

PRELIMINARY ONLY
NOT TO BE USED FOR CONSTRUCTION

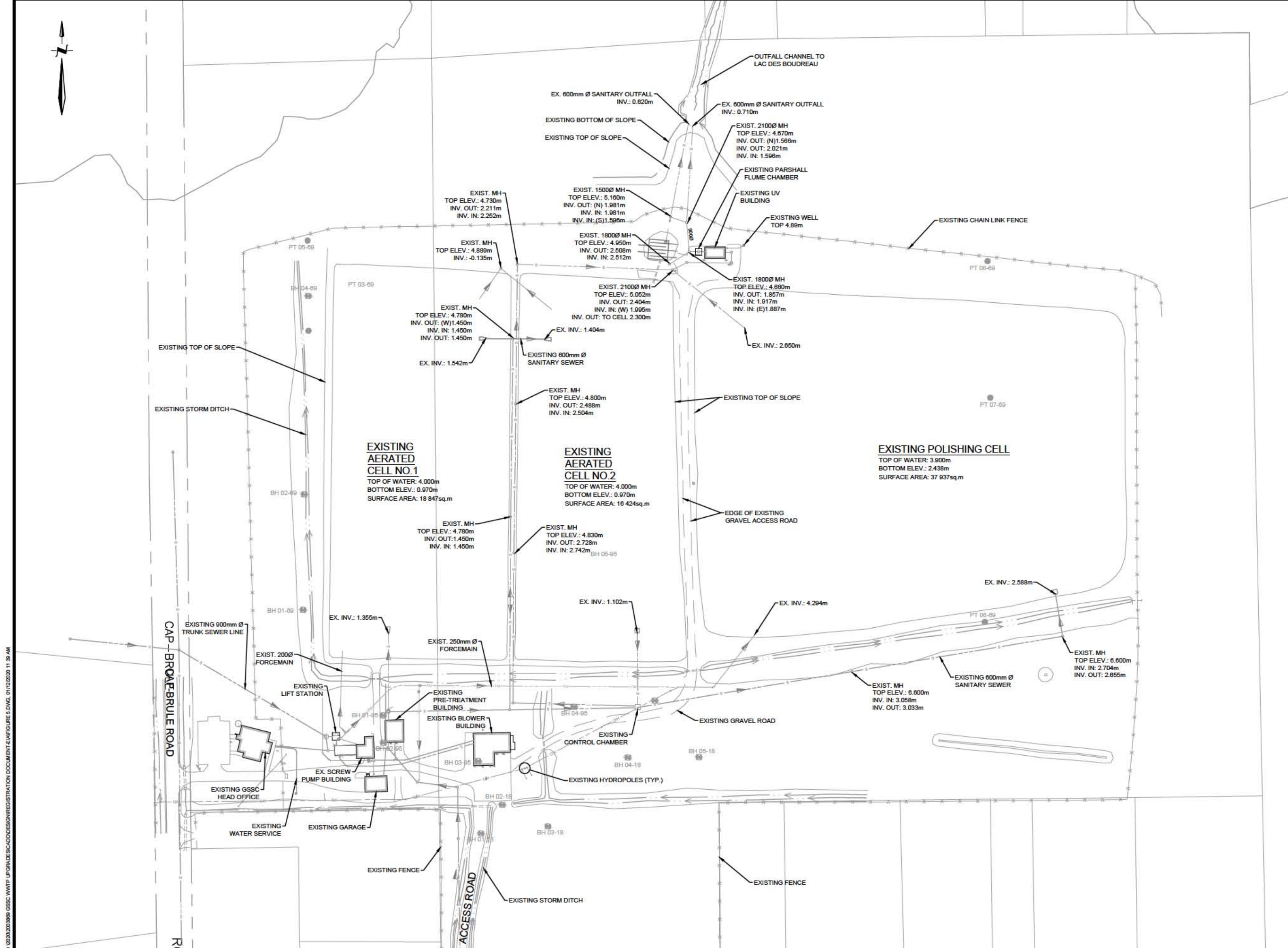
PROJECT TITLE
CAP-BRÛLÉ WASTEWATER TREATMENT FACILITY UPGRADE EIA REGISTRATION DOCUMENT

SHEDIAC N.B.
DRAWING TITLE
ALTERNATE WWTF SITE LOCATION AND SURROUNDING LAND USE

Scale 75m 0 150m (1:2500 FULL SCALE)	Drawn By TWA	Design By CG
	Checked By PP	Cadd Check TWA
	Sheet	1 of 1

File Name
Figure 4

Drawing No.
Figure 4



NOTES

LEGEND

- BH 1: EXISTING BORE HOLES
- PT 1: EXISTING PENETROMETER TEST

0.0	OCT. 09/20	ISSUED FOR EIA REGISTRATION	TWA	
NO.	DATE	REVISIONS	BY	APPR.

GREATER SHEDIAC SEWERAGE COMMISSION
DES ÉGOUTS SHEDIAC ET BANLIEUES

Englobe

PRELIMINARY ONLY
NOT TO BE USED FOR CONSTRUCTION

PROJECT TITLE
CAP-BRULE WASTEWATER TREATMENT FACILITY UPGRADE
EIA REGISTRATION DOCUMENT

SHEDIAC N.B.

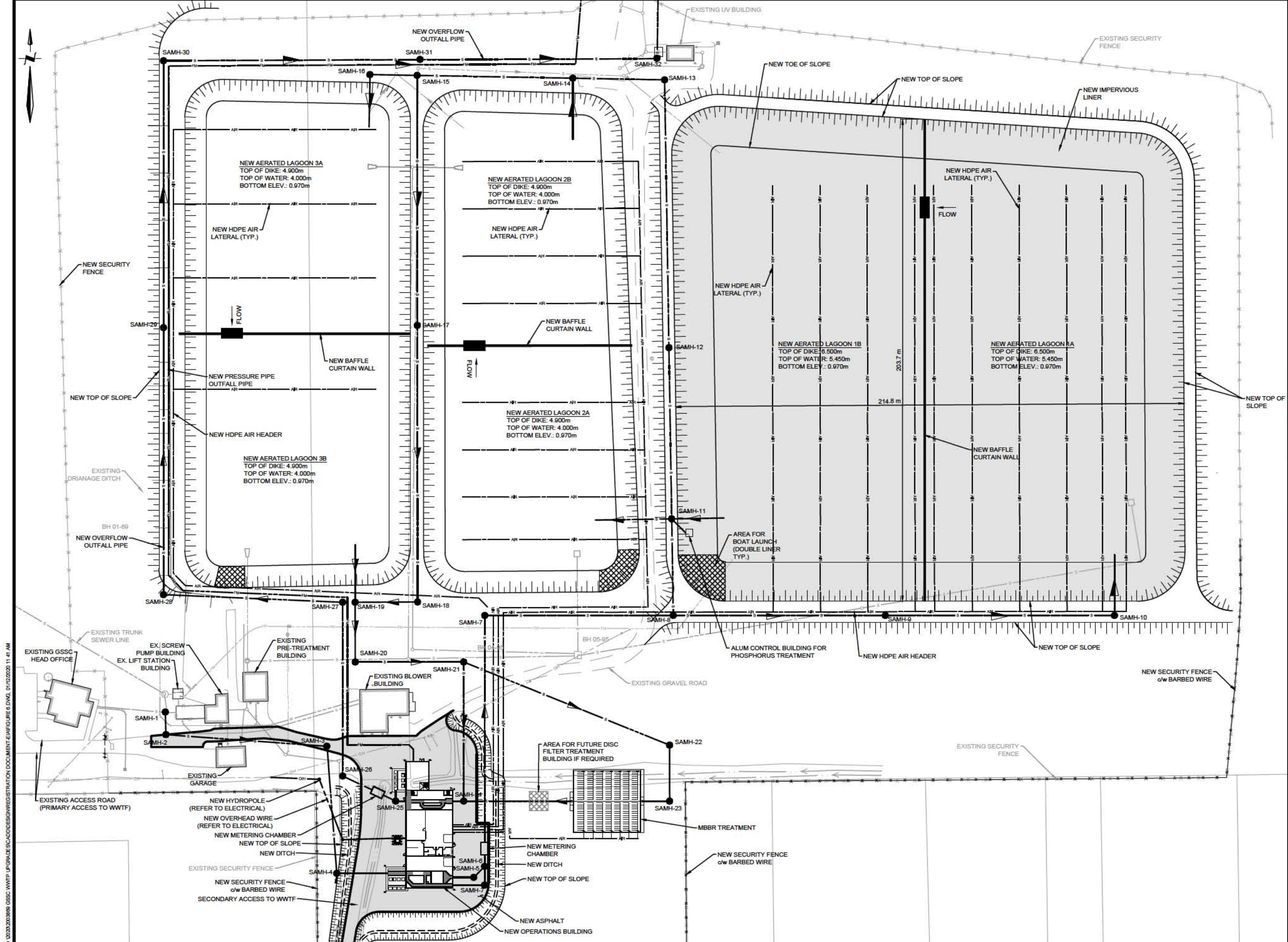
DRAWING TITLE
EXISTING CONDITIONS
GSSC WWTW

Scale	Drawn By	Design By
10m 0 20m (1 1000 FULL SCALE)	TWA	CG
	Checked By	Coord Check
	PP	TWA
	Sheet	1 of 1

File Name FIGURE 5.DWG

Drawing No. Figure 5

0:00203003898 GSSC WWTW UPGRADE EIA REGISTRATION DOCUMENT EIA/FOUR 5.DWG, 01/12/2020 11:30 AM



0:00:00.000:000:000 GSSC WWTP UPGRADE SCA ACCESS/REGISTRATION DOCUMENT E:\INFOLIBRE 6.DWG, 01/12/2020 11:41 AM

NOTES

LEGEND:

- SANITARY SEWER
- SANITARY MANHOLE

0.0	OCT. 09/20	ISSUED FOR EIA REGISTRATION	TWA
NO.	DATE	REVISIONS	BY APPR.

GREATER SHEDIAC SEWERAGE COMMISSION

SHEDIAC DES ÉGOUTS SHEDIAC ET BANLIEUES

PRELIMINARY ONLY

DO NOT BE USED FOR CONSTRUCTION

PROJECT TITLE

CAP-BREULE WASTEWATER TREATMENT FACILITY UPGRADE
EIA REGISTRATION DOCUMENT

SHEDIAC N.B.

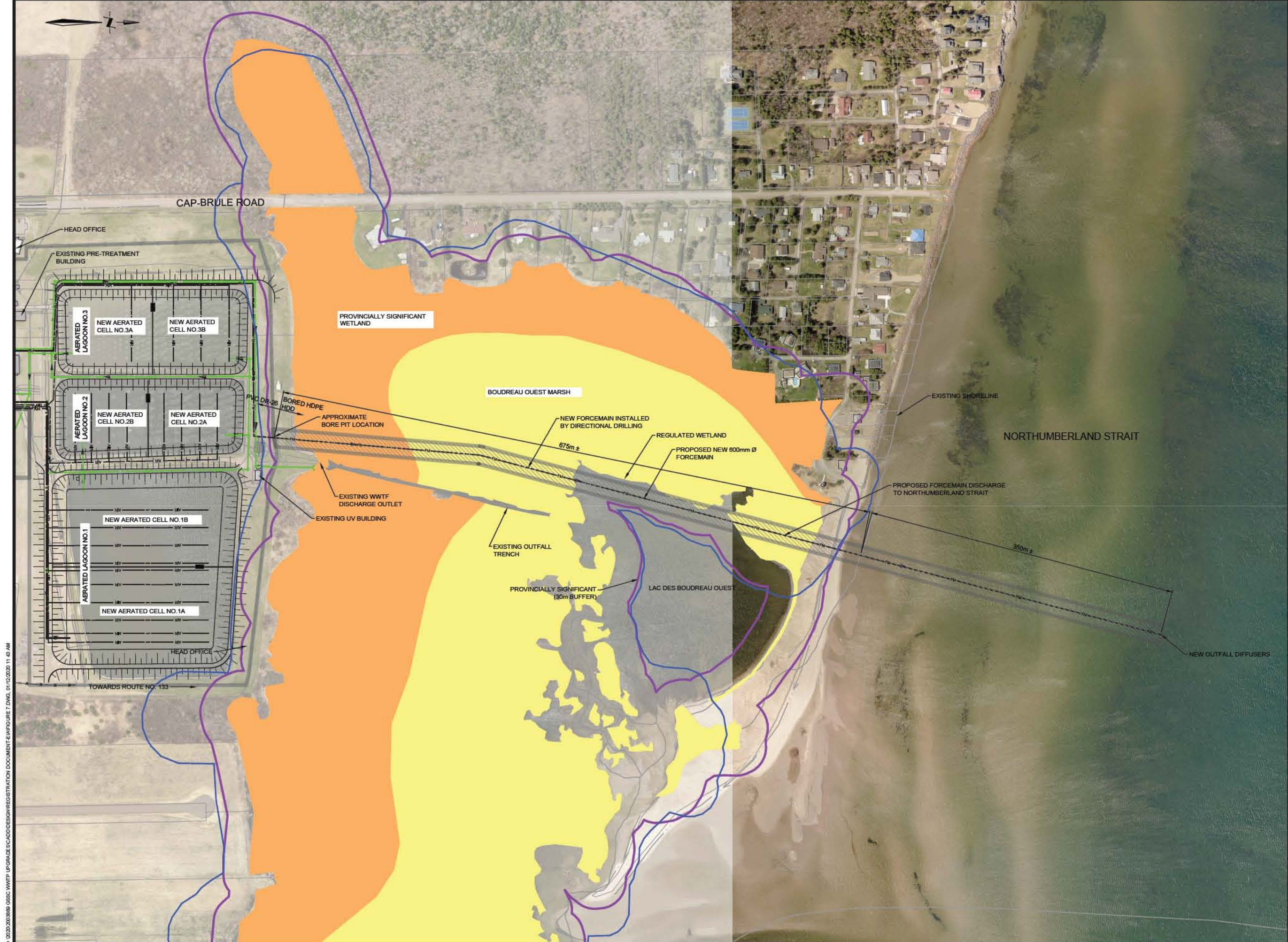
DRAWING TITLE

OVERALL SITE PLAN
PRELIMINARY DESIGN

Scale 7.5m 0 15m (1:750 FULL SCALE)	Drawn By TWA	Design By CG
	Checked By PP	Cadd Check TWA
	Sheet 1 of 1	

File Name FIGURE 6.DWG

Drawing No. Figure 6



O:\0203\0203898 GSSC WWTP UPGRADE\SCAD\DESIGN\REGISTRATION DOCUMENT\FIGURE 7.DWG, 01/12/2020 11:43 AM

NOTES

LEGEND

- NEW GRAVITY SEWER
- NEW FORCEMAIN
- PROVINCIAL SIGNIFICANT WETLAND
- REGULATED WETLANDS MAP (RWM)
- PROVINCIAL SIGNIFICANT WETLAND (30m BUFFER)
- REGULATED WETLAND
- REGULATED WETLAND (30m BUFFER)

0.0	OCT. 09/20	ISSUED FOR EIA REGISTRATION	TWA	CG
NO.	DATE	REVISIONS	BY	APPR.



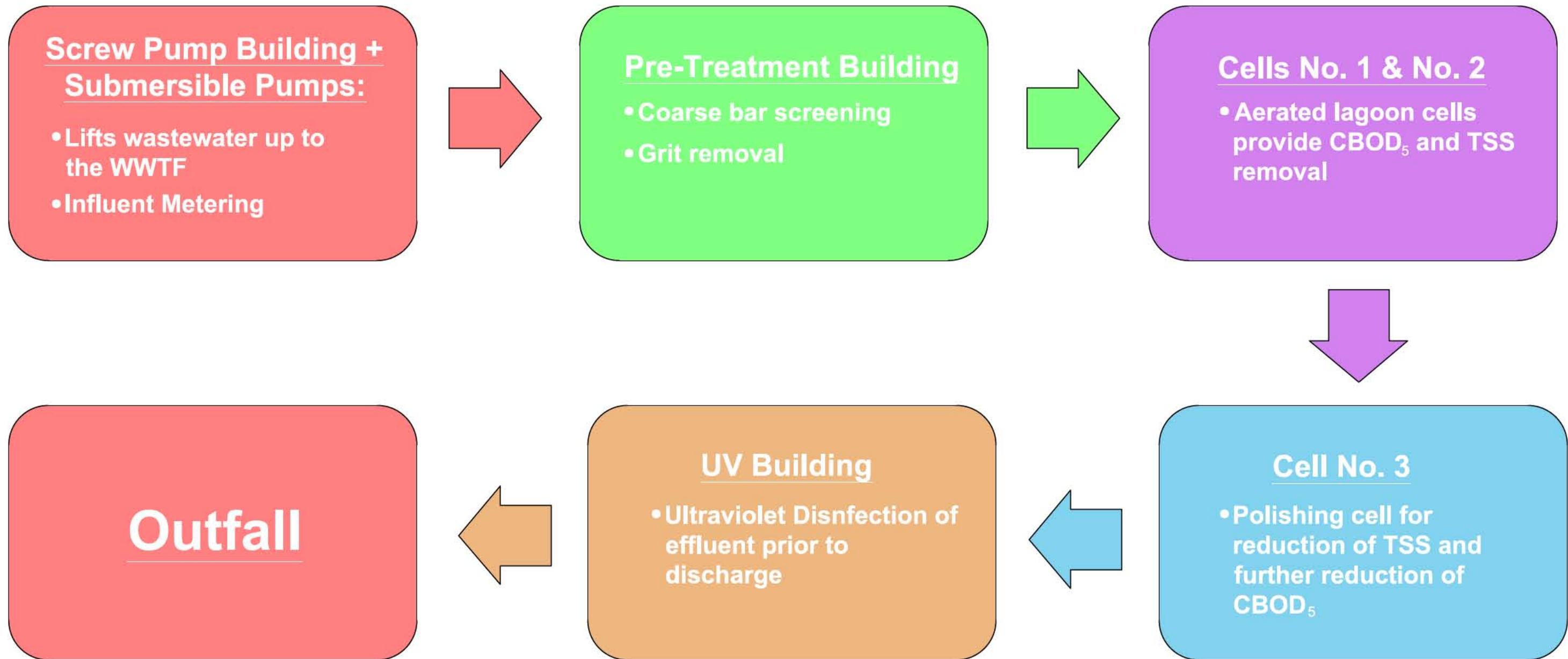
PROJECT TITLE
CAP-BRULÉ WASTEWATER TREATMENT FACILITY UPGRADE EIA REGISTRATION DOCUMENT



SHEDIAC N.B.
DRAWING TITLE
PROPOSED OUTFALL CONCEPT

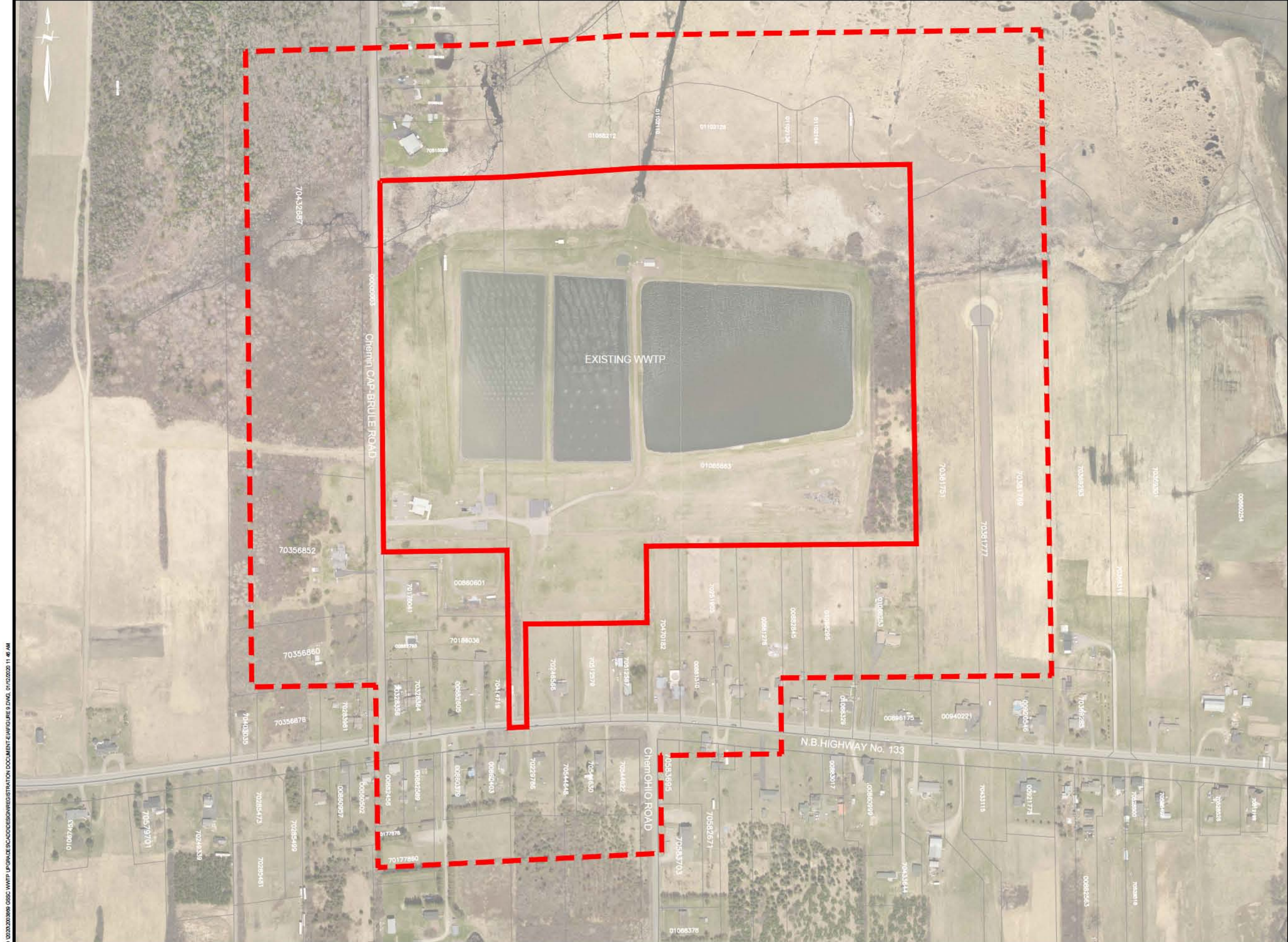
Scale 	Drawn By	Design By
	TWA	CG
	Checked By	Card Check
	PP	TWA
Sheet 1 of 1		

File Name
FIGURE 7.DWG

Drawing No.
Figure 7



 GREATER SHEDIAC SEWERAGE COMMISSION DES ÉGOUTS SHEDIAC ET BANLIEUES			
CAP-BRULE WASTEWATER TREATMENT FACILITY EIA REGISTRATION DOCUMENT			
Discipline	ENVIRONMENTAL	Prepared By	TWA
Scale	NOT TO SCALE	Drawn By	TWA
Date	OCT. 09, 2020	Verified By	CG
		Approved By	PP
		Sheet	1 of 1
Drawing No.	Figure 8		



O:\020\0003898 GSSC WWTP LP\GRADE\SCAD\REGISTRATION DOCUMENT\EA\FIGURE 9.DWG, 01/12/2020 11:46 AM

NOTES

LEGEND:

- GSSC BOUNDARY
- 150m OFFSET LINE

0.0	OCT. 09/20	ISSUED FOR EIA REGISTRATION	TWA	CG
NO.	DATE	REVISIONS	BY	APPR.



PROJECT TITLE
CAP-BRULE WASTEWATER TREATMENT FACILITY UPGRADE EIA REGISTRATION DOCUMENT

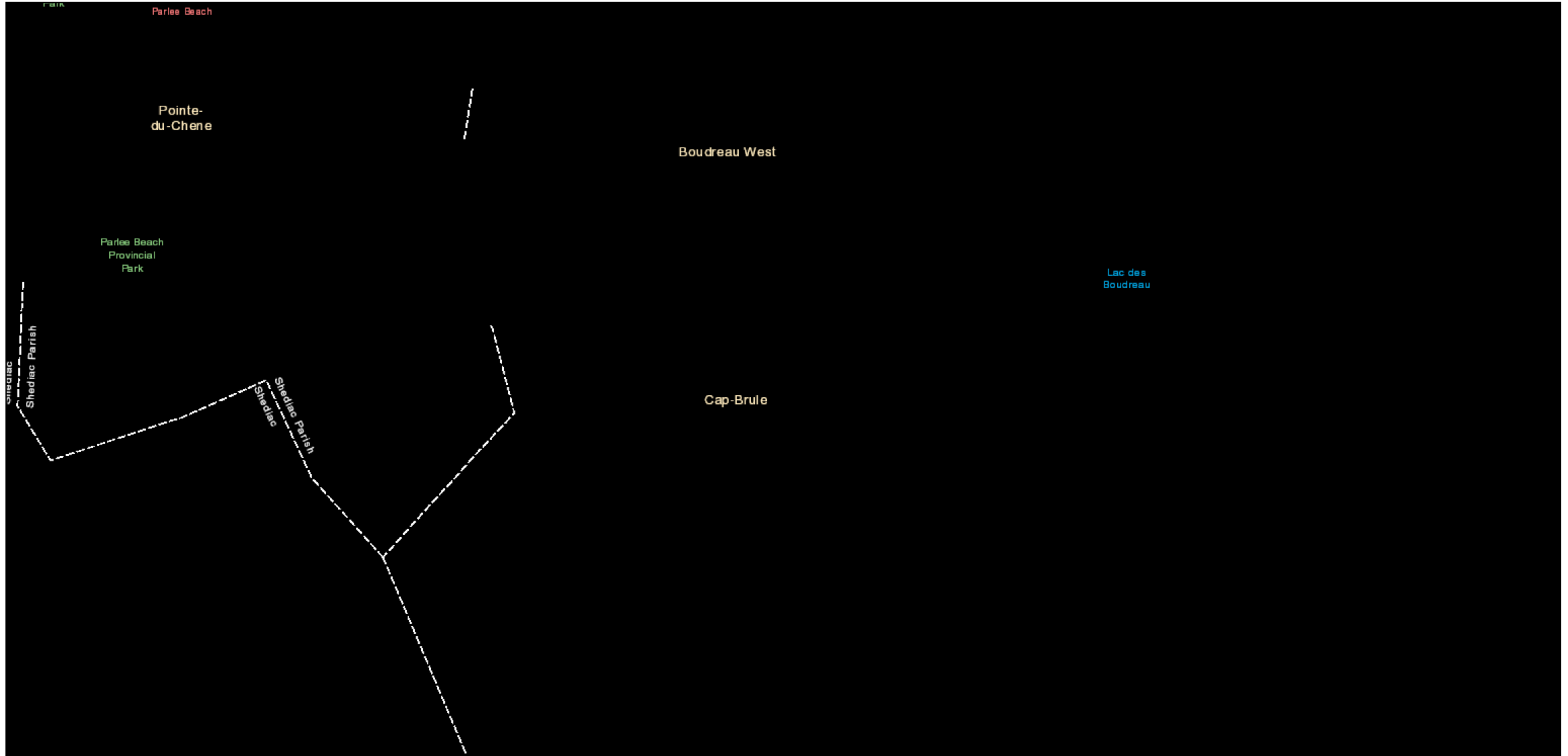
DRAWING TITLE
RESIDENCES LOCATED WITHIN 150m OF SITE

Scale 	Drawn By	Design By
	Checked By	Cost Check
	pp	TWA
Sheet 1 of 1		







File Name: **FIGURE 9.DWG**







Drawing No.: **Figure 9**

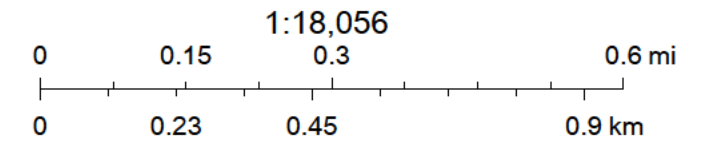
Figure 10 - Zoning Map



2020-12-10 14 h 35 min 54 s

-  Conditional Zoning; Zonage conditionnel
-  Sea-Level Rise Zone; Elevation du niveau de la mer
-  Parcels; Parcelles
- Zoning; Zonage
-  Coastal Residential (CR); Résidentielle côtière (RC)
-  Rural Residential (RR); Résidentielle rurale (RR)
-  Community Centre (CC); Centre communautaire (CC)

-  General Commercial (GC); Commerce général (CG)
-  Environment Conservation (E); Préservation de l'environnement (E)
-  Integrated Development (ID); Aménagement intégré (AI)
-  Industrial (I); Industrie (I)
-  Port (P); Portuaire (P)
-  Intensive Resource Development (IRD); Exploitation intensive des ressources (EIR)
-  Resource Development (RD); Développement des ressources (DR)



Service New Brunswick, GeoEye, Maxar, Esri, HERE, Garmin, IPC, NRCan