

**ENVIRONMENTAL IMPACT ASSESSMENT REGISTRATION DOCUMENT FOR 138 KV RELIABILITY FOR  
FREDERICTON SOUTH**

Appendix D Mapbook of Environmental Attributes in the Local Assessment Area  
November 1, 2019

**Appendix D MAPBOOK OF ENVIRONMENTAL ATTRIBUTES IN  
THE LOCAL ASSESSMENT AREA**

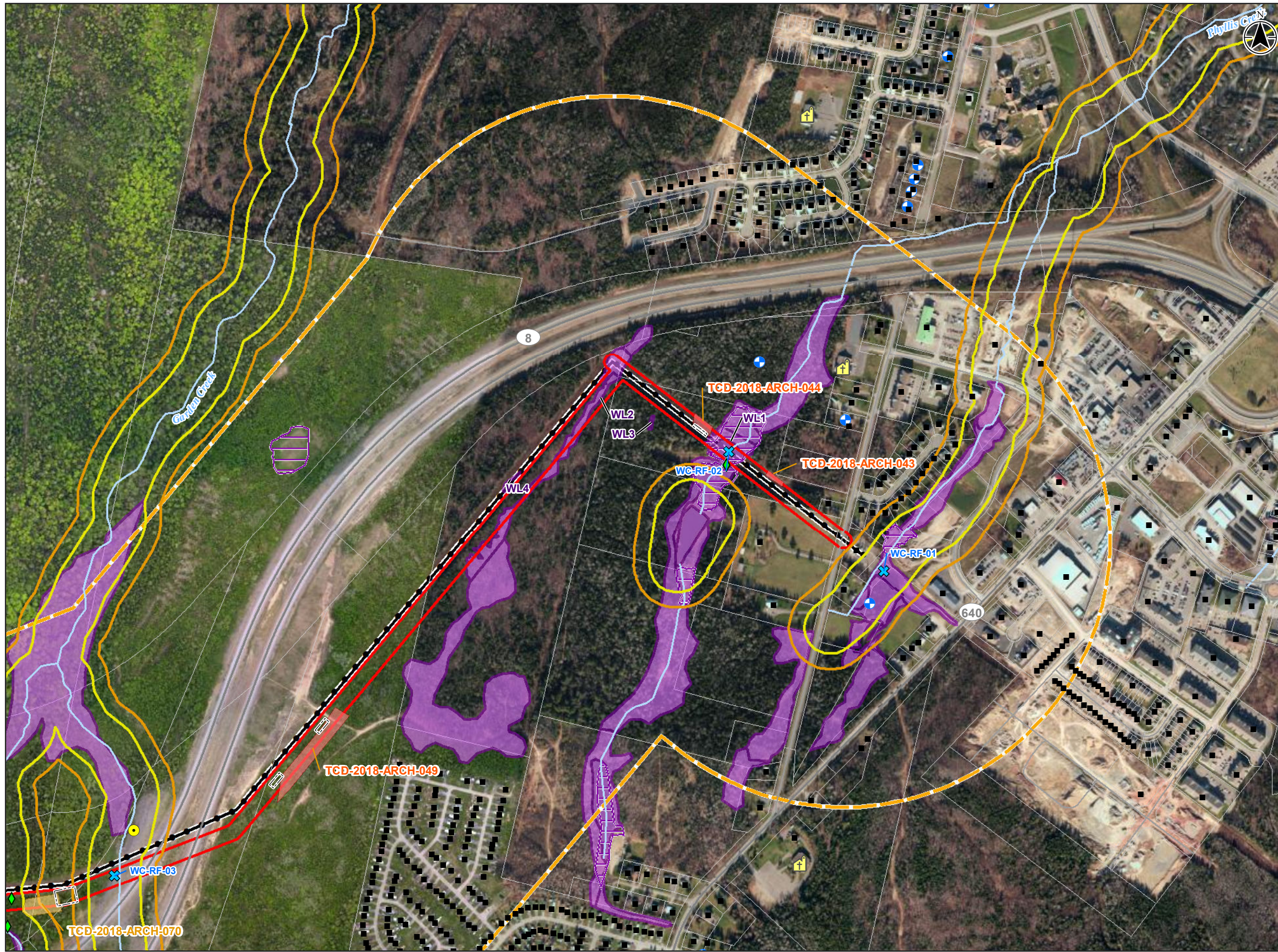


**ENVIRONMENTAL IMPACT ASSESSMENT REGISTRATION DOCUMENT FOR 138 KV RELIABILITY FOR  
FREDERICTON SOUTH**

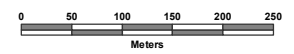
Appendix D Mapbook of Environmental Attributes in the Local Assessment Area  
November 1, 2019



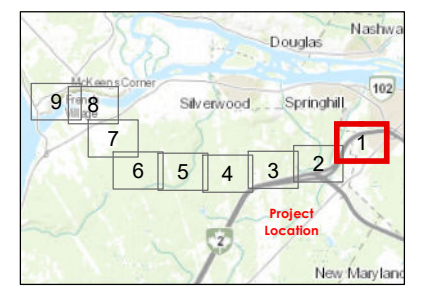
# Rainsford Line 1185 Environmental Attributes Mapbook



- Existing Line L1135
- ▭ Project Development Area (PDA)
- ▭ Local Assessment Area (500m)
- Accdc Data**
- Mammal
- Field Collected Data**
- ◆ Plant Species of Conservation Concern
- Water Well
- ✕ Watercourse Crossing
- ▭ Delineated Wetland (Stantec)
- ▭ GeoNB-mapped Wetland
- ▭ Property Boundary (Private)
- Shovel Testing Recommendation (Stantec)**
- ▭ High Potential Area
- ▭ Medium Potential Area
- ▭ Testing Grid
- ▭ High Potential Buffer
- ▭ Medium Potential Buffer
- Major Road
- Minor Road
- Watercourse
- Building
- Ⓜ Church



121416184-001 NAD 1983 CSRS New Brunswick Stereographic

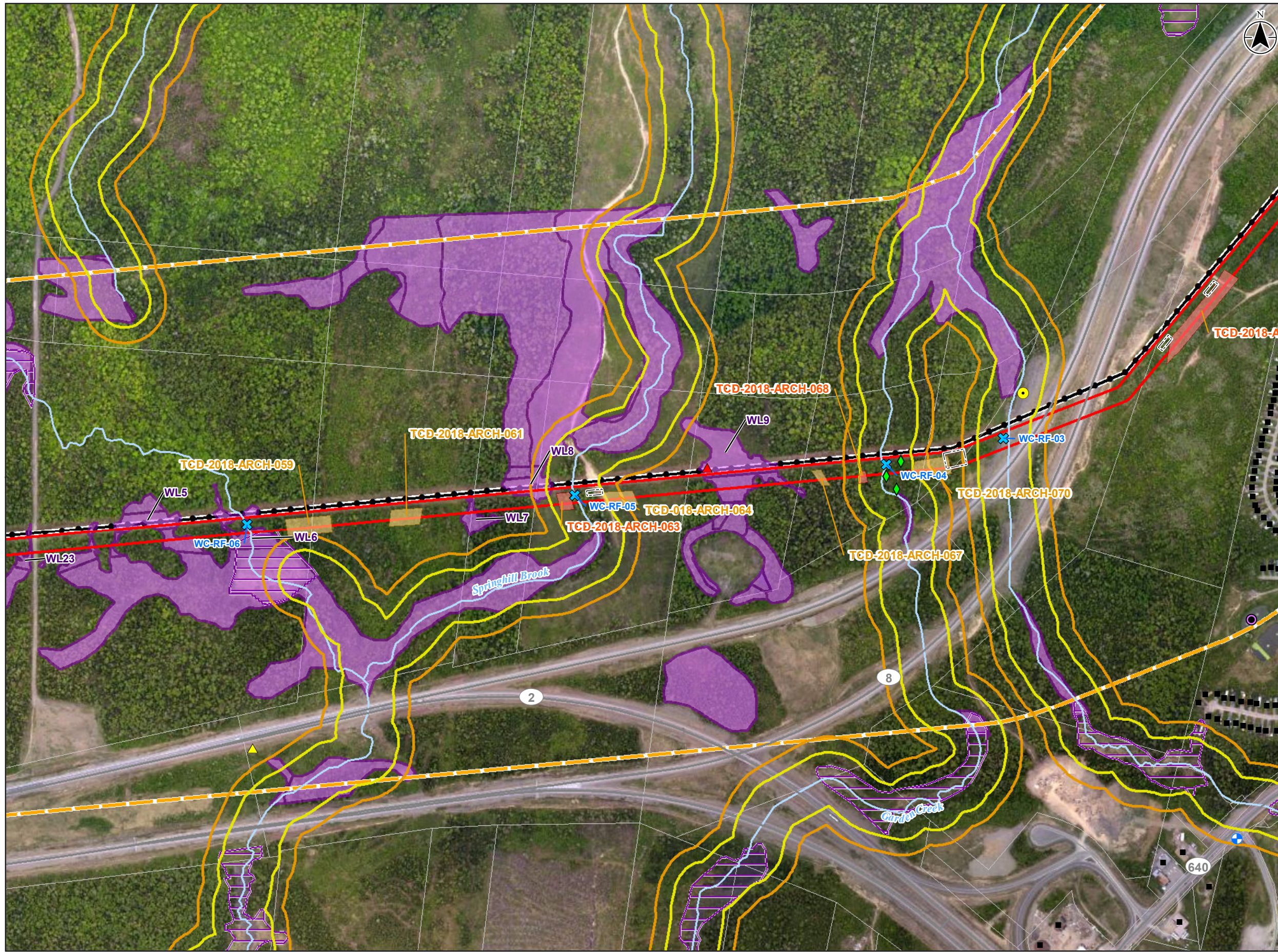


121416184 - RAINSFORD-TWINNING NB POWER

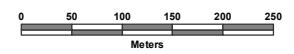
Data Sources: Government of New Brunswick, Archaeological Services  
 Service Layer Credits: Service New Brunswick/Service Nouveau Brunswick  
 Sources: Esri, HERE, Garmin, Intermap, increment P Corp., GEBCO, USGS, FAO, NPS, NRCAN, GeBCO, IGN, Kadaster NL, Ordnance Survey, Esri Japan, MEI, Esri China (Hong Kong), (c) OpenStreetMap contributors, and the GIS User Community



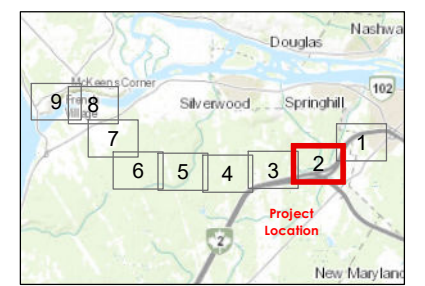
# Rainsford Line 1185 Environmental Attributes Mapbook



- Existing Line L1135
- ▭ Project Development Area (PDA)
- ▭ Local Assessment Area (500m)
- Accdc Data**
- ▲ Bird
- Mammal
- Field Collected Data**
- ◆ Plant Species of Conservation Concern
- ▲ CANADA WARBLER
- ⊕ Water Well
- ⊗ Watercourse Crossing
- ▭ Delinated Wetland (Stantec)
- ▭ GeoNB-mapped Wetland
- ▭ Property Boundary (Private)
- Shovel Testing Recommendation (Stantec)**
- ▭ High Potential
- ▭ Medium Potential Area
- ▭ Testing Grid
- ▭ High Potential Buffer
- ▭ Medium Potential Buffer
- Major Road
- Minor Road
- Watercourse
- Building
- Sewage treatment



121416184-001 NAD 1983 CSRS New Brunswick Stereographic

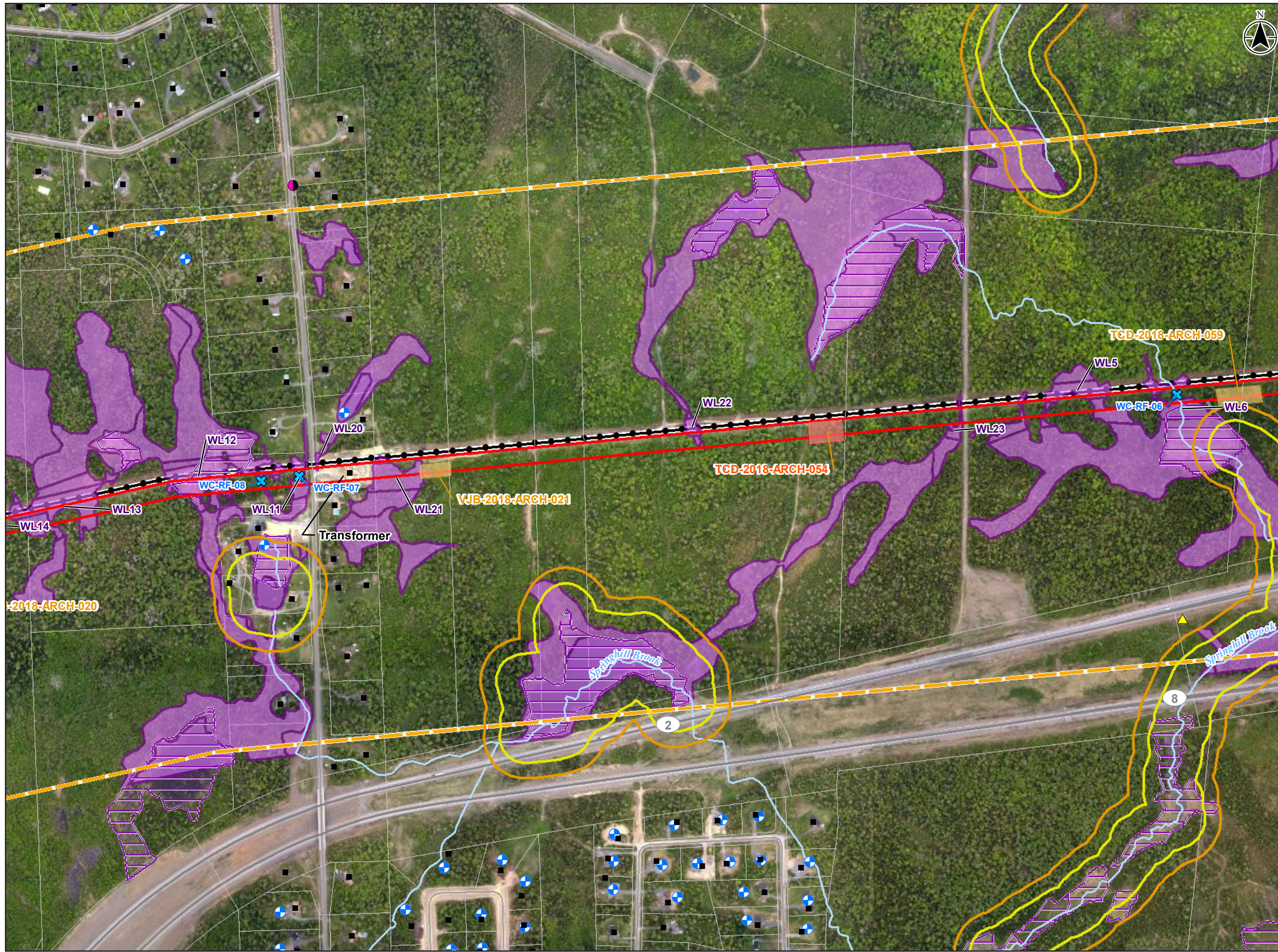


121416184 - RAINSFORD-TWINNING NB POWER

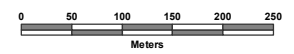
Data Sources: Government of New Brunswick, Archaeological Services  
 Service Layer Credits: Service New Brunswick/Service Nouveau Brunswick  
 Sources: Esri, HERE, Garmin, Intermap, increment P Corp., GEBCO, USGS, FAO, NPS, NRCAN, Geobase, IGN, Kadaster NL, Ordnance Survey, Esri Japan, METI, Esri China (Hong Kong), (c) OpenStreetMap contributors, and the GIS User Community



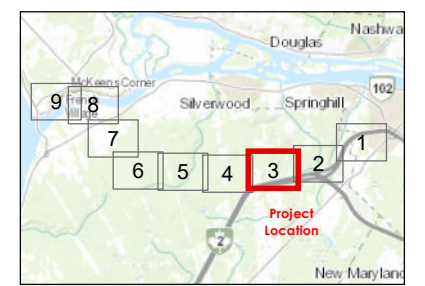
# Rainsford Line 1185 Environmental Attributes Mapbook



- Existing Line L1135
- ▭ Project Development Area (PDA)
- ▭ Local Assessment Area (500m)
- Accdc Data**
- ▲ Bird
- Insect
- Water Well
- ✕ Watercourse Crossing
- ▭ Delinated Wetland (Stantec)
- ▭ GeoNB-mapped Wetland
- ▭ Property Boundary (Private)
- Shovel Testing Recommendation (Stantec)**
- ▭ High Potential Area
- ▭ Medium Potential Area
- ▭ High Potential Buffer
- ▭ Medium Potential Buffer
- Major Road
- Minor Road
- Watercourse
- Building



121416184-001 NAD 1983 CSRS New Brunswick Stereographic



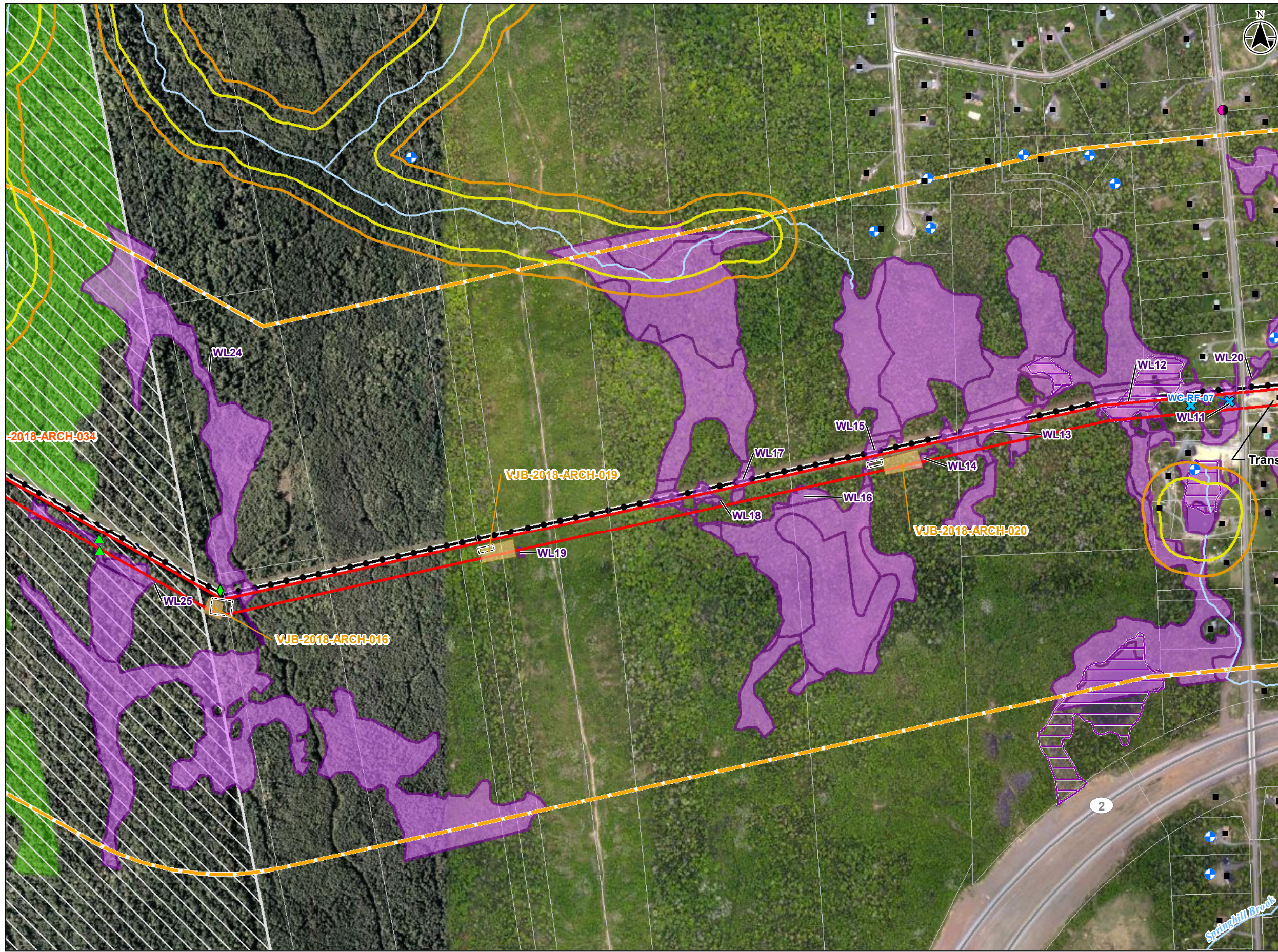
121416184 - RAINSFORD-TWINNING NB POWER

Data Sources: Government of New Brunswick, Archaeological Services  
 Service Layer Credits: Service New Brunswick/Service Nouveau Brunswick  
 Sources: Esri, HERE, Garmin, Intermap, increment P Corp., GEBCO, USGS, FAO, NPS, NRCAN, Geobase, IGN, Kadaster NL, Ordnance Survey, Esri Japan, METI, Esri China (Hong Kong), (c) OpenStreetMap contributors, and the GIS User Community

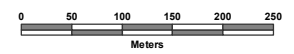




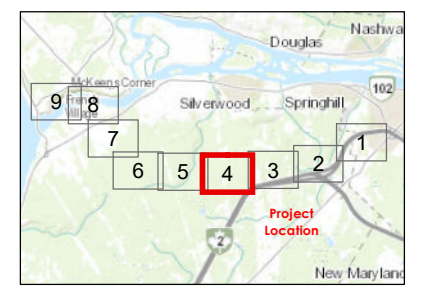
# Rainsford Line 1185 Environmental Attributes Mapbook



- Existing Line L1135
- ▭ Project Development Area (PDA)
- ▭ Local Assessment Area (500m)
- Accdc Data**
- Insect
- Field Collected Data**
- ◆ Plant Species of Conservation Concern
- ▲ EASTERN WOOD-PEWEE
- Water Well
- ✕ Watercourse Crossing
- ▭ Delineated Wetland (Stantec)
- ▭ GeoNB-mapped Wetland
- ▭ Old Forest Communities and Old Forest Wildlife Habitat
- ▭ Crown
- ▭ Property Boundary (Private)
- Shovel Testing Recommendation (Stantec)**
- ▭ Medium Potential Area
- ▭ Testing Grid
- ▭ High Potential Buffer
- ▭ Medium Potential Buffer
- Major Road
- Minor Road
- Watercourse
- Building



121416184-001 NAD 1983 CSRS New Brunswick Stereographic

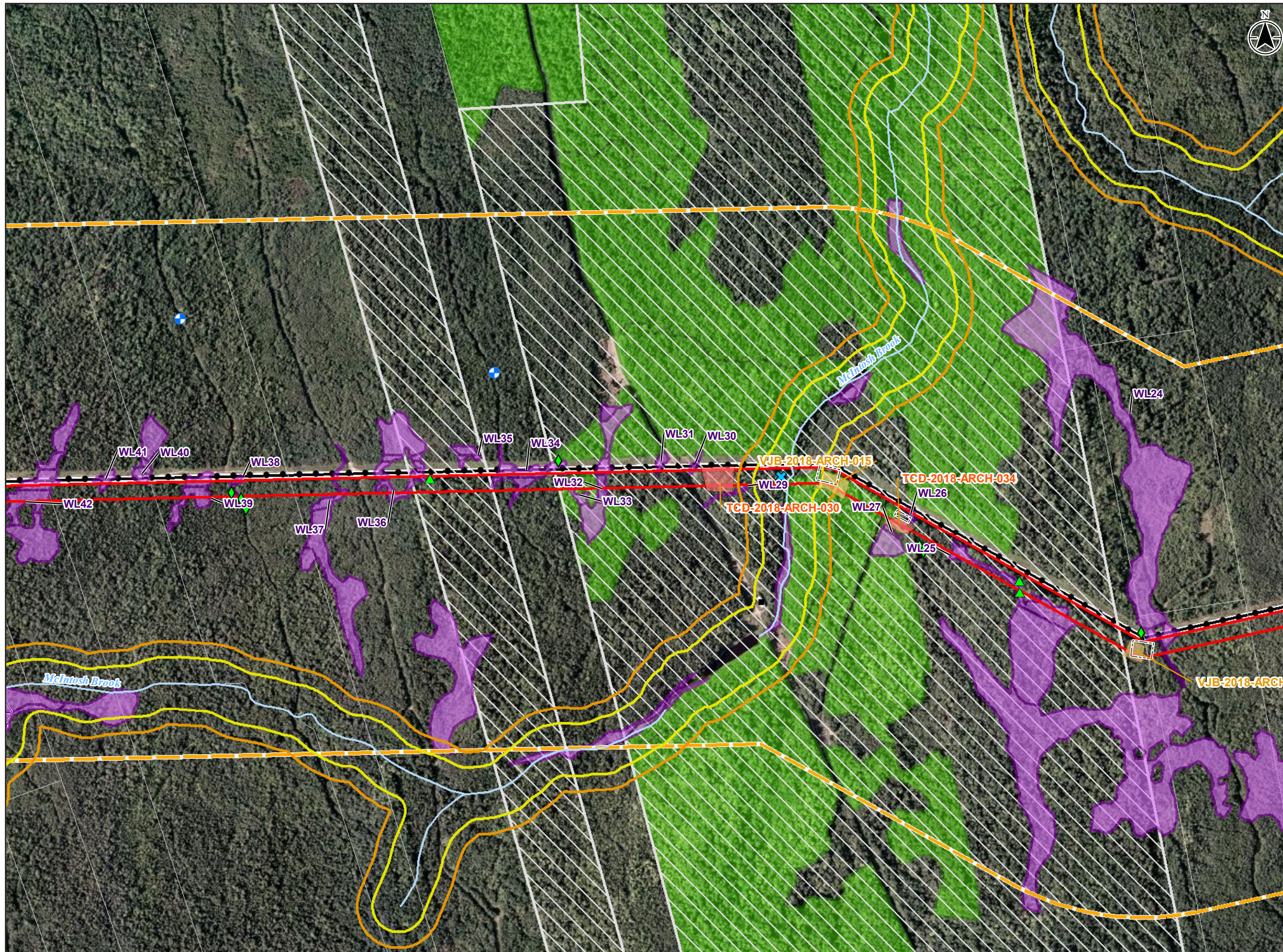


121416184 - RAINSFORD-TWINNING NB POWER

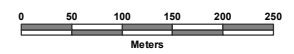
Data Sources: Government of New Brunswick, Archaeological Services  
 Service Layer Credits: Service New Brunswick/Service Nouveau Brunswick  
 Sources: Esri, HERE, Garmin, Intermap, increment P Corp., GEBCO, USGS, FAO, NPS, NRCAN, Geobase, IGN, Kadaster NL, Ordnance Survey, Esri Japan, METI, Esri China (Hong Kong), (c) OpenStreetMap contributors, and the GIS User Community



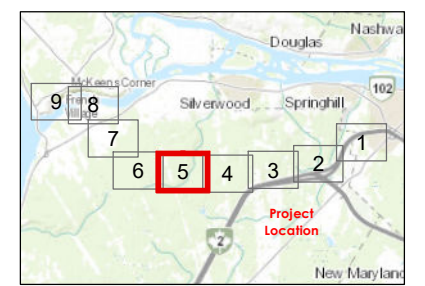
# Rainsford Line 1185 Environmental Attributes Mapbook



- Existing Line L1135
- ▭ Project Development Area (PDA)
- ▭ Local Assessment Area (500m)
- Field Collected Data**
- ◆ Plant Species of Conservation Concern
- ▲ EASTERN WOOD-PEWEE
- ⊕ Water Well
- ⊗ Watercourse Crossing
- ▭ Delineated Wetland (Stantec)
- ▭ GeoNB-mapped Wetland
- ▭ Old Forest Communities and Old Forest Wildlife Habitat
- ▭ Crown
- ▭ Property Boundary (Private)
- Shovel Testing Recommendation (Stantec)**
- ▭ High Potential Area
- ▭ Medium Potential Area
- ▭ Testing Grid
- ▭ High Potential Buffer
- ▭ Medium Potential Buffer
- Watercourse
- Building



121416184-001 NAD 1983 CSRS New Brunswick Stereographic

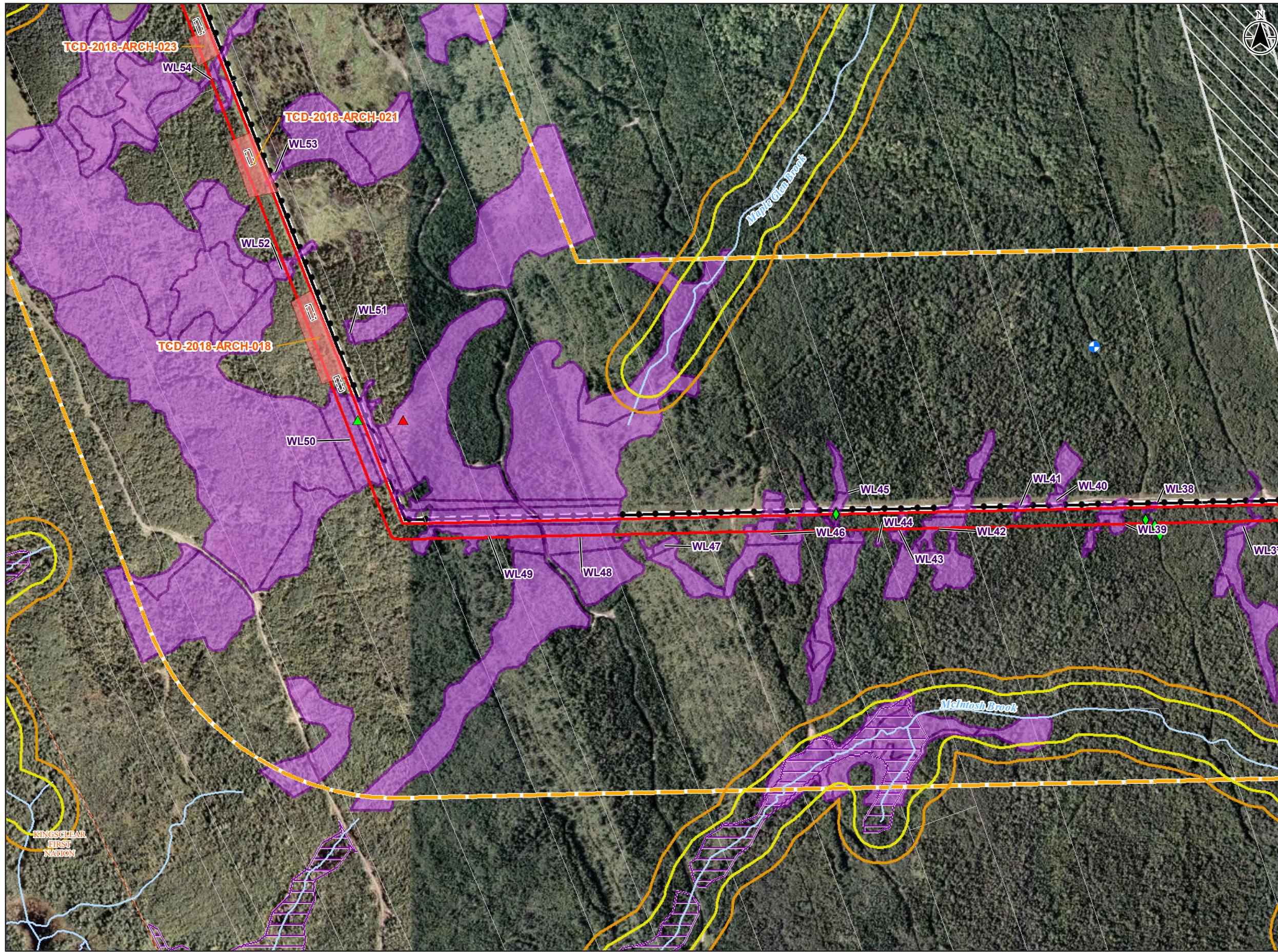


121416184 - RAINSFORD-TWINNING NB POWER

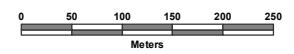
Data Sources: Government of New Brunswick, Archaeological Services  
 Service Layer Credits: Service New Brunswick/Service Nouveau Brunswick  
 Sources: Esri, HERE, Garmin, Intermap, increment P Corp., GEBCO, USGS, FAO, NPS, NRCAN, Geobase, IGN, Kadaster NL, Ordnance Survey, Esri Japan, METI, Esri China (Hong Kong), (c) OpenStreetMap contributors, and the GIS User Community



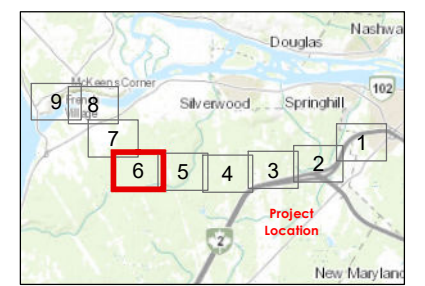
# Rainsford Line 1185 Environmental Attributes Mapbook



- Existing Line L1135
- Project Development Area (PDA)
- ▭ Local Assessment Area (500m)
- Field Collected Data**
- ◆ Plant Species of Conservation Concern
- ▲ CANADA WARBLER
- ▲ EASTERN WOOD-PEWEE
- Water Well
- Delinated Wetland (Stantec)
- ▭ GeoNB-mapped Wetland
- ▭ Crown
- ▭ Property Boundary (Private)
- ▭ Aboriginal Community
- Shovel Testing Recommendation (Stantec)**
- High Potential
- ▭ Testing Grid
- ▭ High Potential Buffer
- ▭ Medium Potential Buffer
- Watercourse



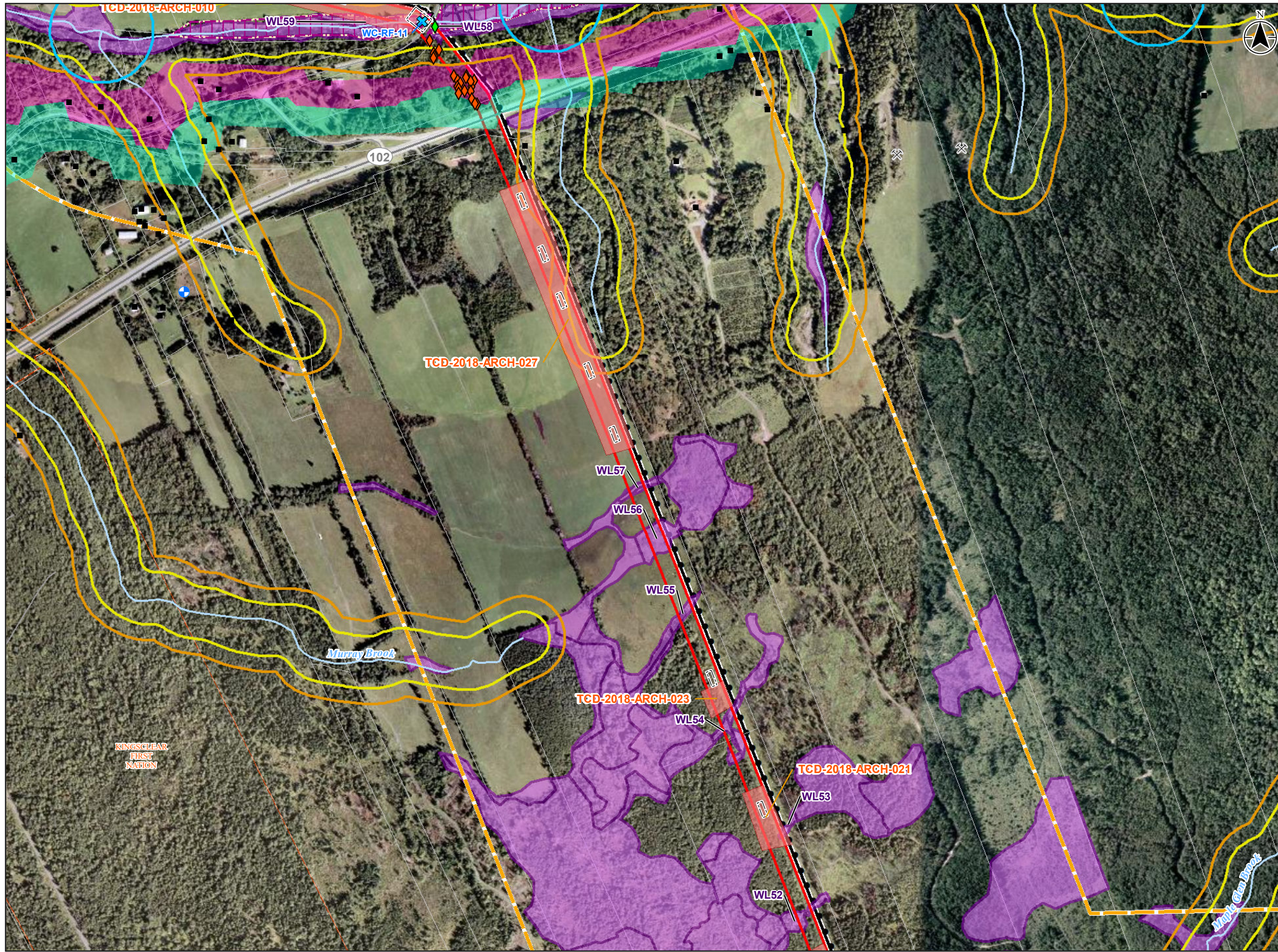
121416184-001 NAD 1983 CSRS New Brunswick Stereographic



121416184 - RAINSFORD-TWINNING NB POWER

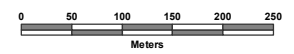
Data Sources: Government of New Brunswick, Archaeological Services  
 Service Layer Credits: Service New Brunswick/Service Nouveau Brunswick  
 Sources: Esri, HERE, Garmin, Intermap, increment P Corp., GEBCO, USGS, FAO, NPS, NRCAN, Geobase, IGN, Kadaster NL, Ordnance Survey, Esri Japan, METI, Esri China (Hong Kong), (c) OpenStreetMap contributors, and the GIS User Community



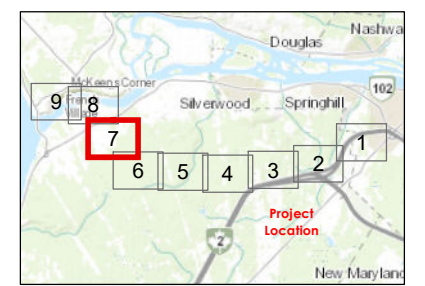


### Rainsford Line 1185 Environmental Attributes Mapbook

- Existing Line L1135
- ▭ Project Development Area (PDA)
- ▭ Local Assessment Area (500m)
- Field Collected Data**
  - ◆ Plant Species at Risk: Butternut (*Juglans cinerea*)
  - ◆ Plant Species of Conservation Concern
- Water Well
- ✕ Watercourse Crossing
- ▭ Delinated Wetland (Stantec)
- ▭ Provincially Significant Wetland
- ▭ Property Boundary (Private)
- ▭ Aboriginal Community
- Shovel Testing Recommendation (Stantec)**
  - ▭ High Potential
- ▭ Testing Grid
- ▭ Confluence Buffer
- ▭ High Potential Buffer
- ▭ Medium Potential Buffer
- ▭ Palaeo Shoreline (Class 2)
- ▭ Palaeo Shoreline (Class 3)
- Major Road
- Minor Road
- Watercourse
- Building
- ✕ Pit



121416184-001 NAD 1983 CSRS New Brunswick Stereographic

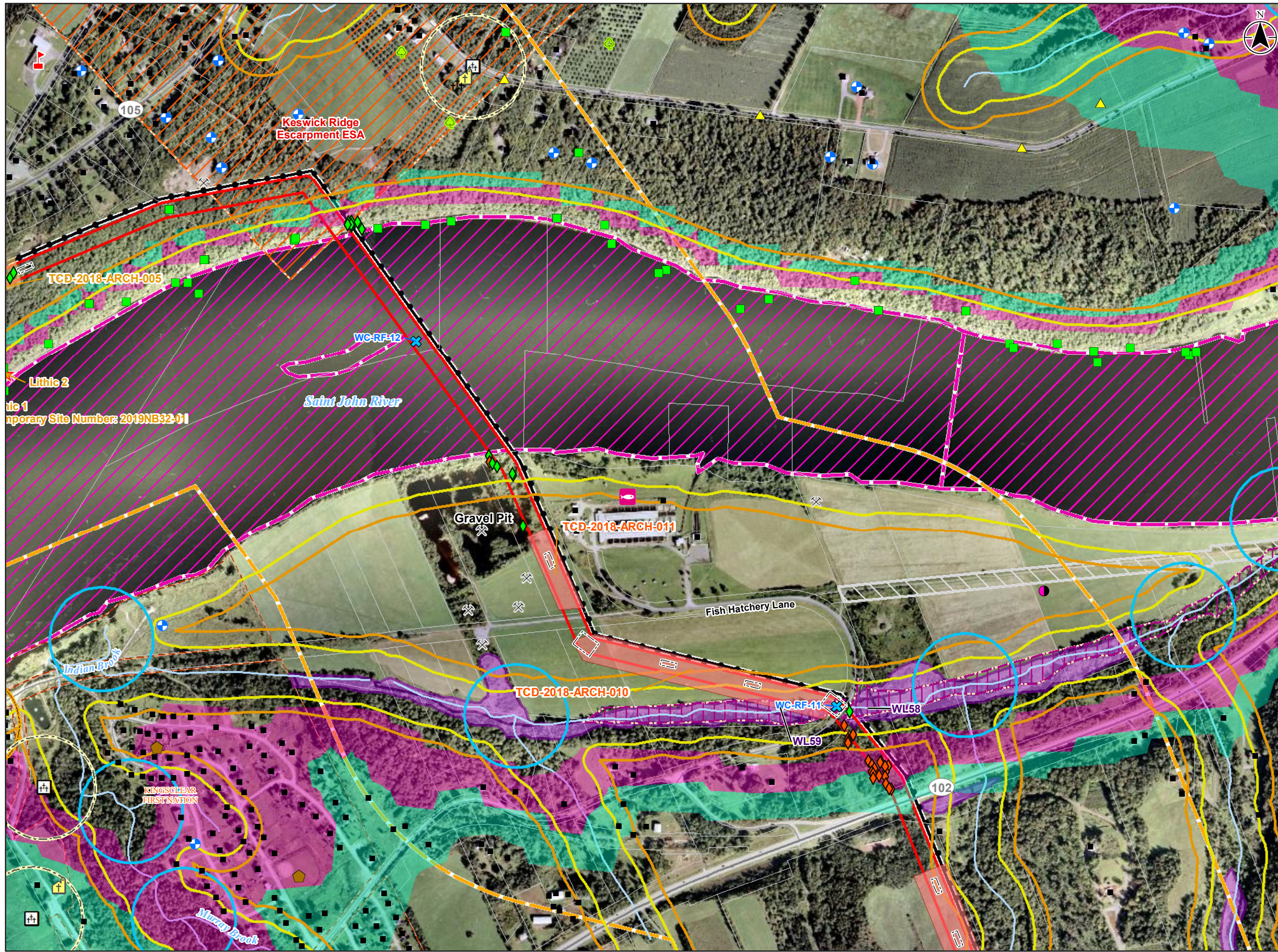


121416184 - RAINSFORD-TWINNING NB POWER

Data Sources: Government of New Brunswick, Archaeological Services  
 Service Layer Credits: Service New Brunswick/Service Nouveau Brunswick  
 Sources: Esri, HERE, Garmin, Intermap, increment P Corp., GEBCO, USGS, FAO, NPS, NRCAN, Geobase, IGN, Kadaster NL, Ordnance Survey, Esri Japan, METI, Esri China (Hong Kong), (c) OpenStreetMap contributors, and the GIS User Community

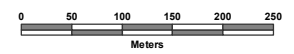




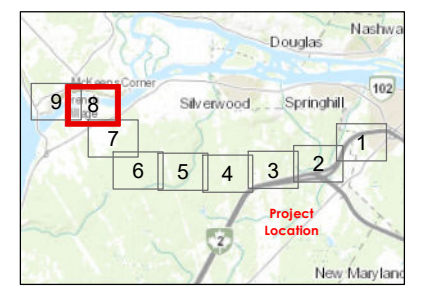


### Rainsford Line 1185 Environmental Attributes Mapbook

- Existing Line L1135
- Project Development Area (PDA)
- Local Assessment Area (500m)
- ▲ Accdc Data
  - ▲ Bird
  - Insect
  - Plant
- ◆ Plant Species at Risk: Butternut (*Juglans cinerea*)
- ◆ Plant Species of Conservation Concern
- Water Well
- ✕ Watercourse Crossing
- Delinated Wetland (Stantec)
- Provincially Significant Wetland
- Crown
- Property Boundary (Private)
- Aboriginal Community
- Environmentally Significant Natural Area (Approximate)
- Rare and Common Freshwater Fish
- ★ Approximate Location of Lithic (Stantec)
- Shovel Testing Recommendation (Stantec)
  - High Potential
  - Medium Potential Area
  - Testing Grid
- Archaeological Services Data
  - Euro-Canadian Cemetery
  - Cemetery Buffer
  - Confluence Buffer
  - Historic Site Buffer
  - High Potential Buffer
  - Medium Potential Buffer
  - Palaeo Shoreline (Class 2)
  - Palaeo Shoreline (Class 3)
- Major Road
- Minor Road
- Watercourse
- Building
- † Cemetery
- † Church
- Fish hatchery
- Orchard
- ✕ Pit
- Sports field
- School



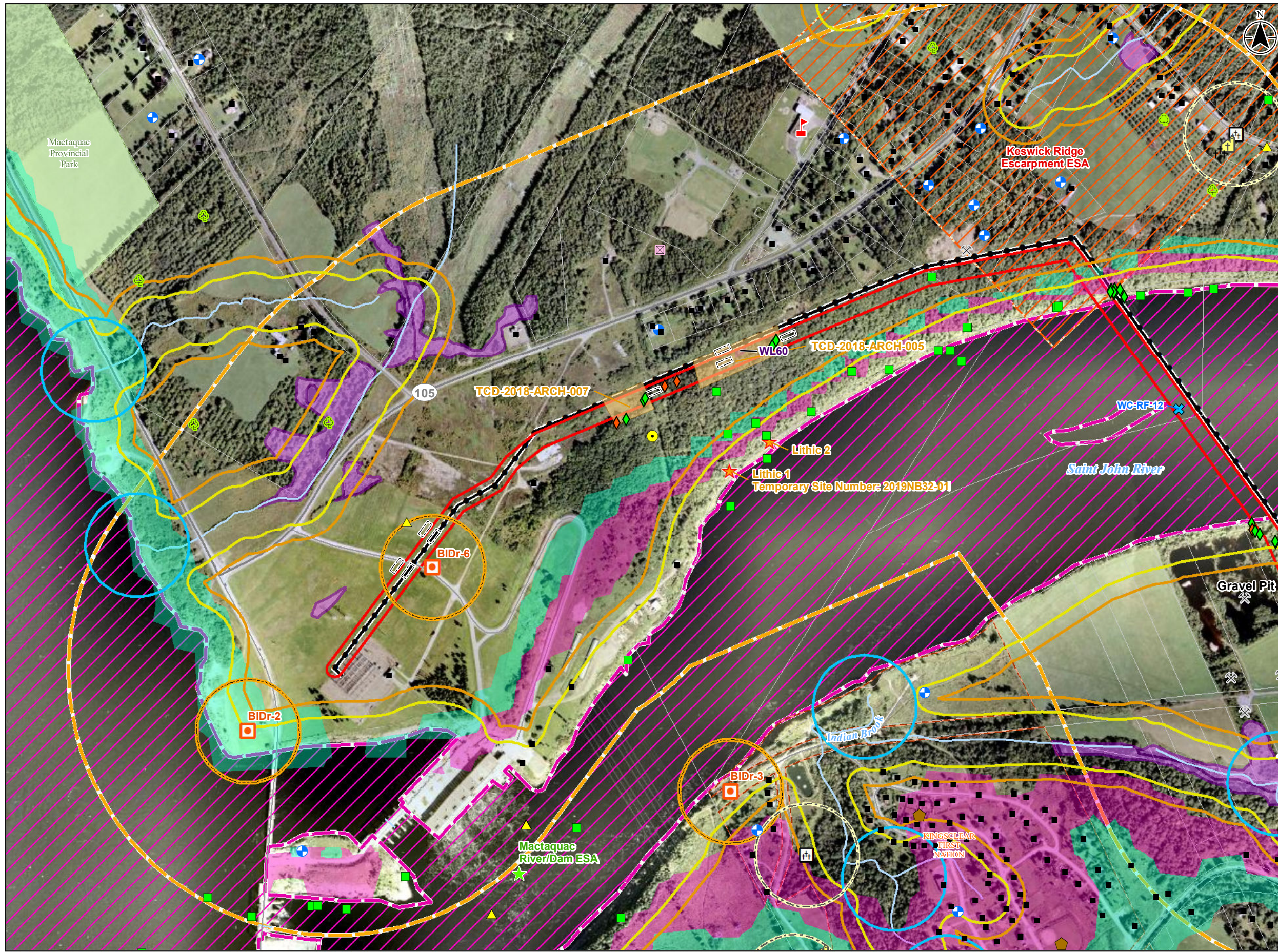
121416184-001 NAD 1983 CSRS New Brunswick Stereographic



121416184 - RAINSFORD-TWINNING NB POWER

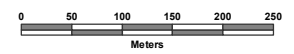
Data Sources: Government of New Brunswick, Archaeological Services  
 Service Layer Credits: Service New Brunswick/Service Nouveau Brunswick  
 Sources: Esri, HERE, Garmin, Intermap, increment P Corp., GEBCO, USGS, FAO, NPS, NRCAN, Geobase, IGN, Kadaster NL, Ordnance Survey, Esri Japan, METI, Esri China (Hong Kong), (c) OpenStreetMap contributors, and the GIS User Community



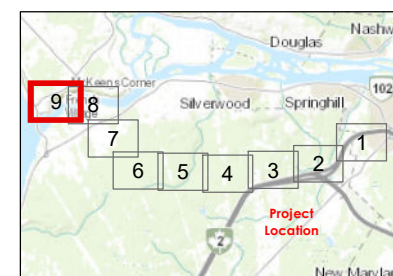


### Rainsford Line 1185 Environmental Attributes Mapbook

- Existing Line L1135
- Project Development Area (PDA)
- Local Assessment Area (500m)
- Accdc Data**
- ▲ Bird
- Mammal
- Plant
- Field Collected Data**
- ◆ Plant Species at Risk: Butternut (*Juglans cinerea*)
- ◆ Plant Species of Conservation Concern
- Water Well
- ✕ Watercourse Crossing
- ★ Environmentally Significant Area
- Delineated Wetland (Stantec)
- Property Boundary (Private)
- Provincial Park
- Aboriginal Community
- Environmentally Significant Natural Area (Approximate)
- Rare and Common Freshwater Fish
- ★ Approximate Location of Lithic (Stantec)
- Shovel Testing Recommendation (Stantec)**
- Medium Potential Area
- Testing Grid
- Archaeological Services Data**
- Euro-Canadian Cemetery
- Historic Archaeological Site
- Cemetery Buffer
- Confluence Buffer
- Historic Site Buffer
- High Potential Buffer
- Medium Potential Buffer
- Palaeo Shoreline (Class 2)
- Palaeo Shoreline (Class 3)
- Major Road
- Minor Road
- Watercourse
- Building
- ††† Cemetery
- † Church
- Orchard
- ✕ Pit
- ⊠ Pumping station
- Sports field
- School



121416184-001 NAD 1983 CSRS New Brunswick Stereographic



121416184 - RAINSFORD-TWINNING NB POWER

Data Sources: Government of New Brunswick, Archaeological Services  
 Service Layer Credits: Service New Brunswick/Service Nouveau Brunswick  
 Sources: Esri, HERE, Garmin, Intermap, increment P Corp., GEBCO, USGS, FAO, NPS, NRCAN, Geobase, IGN, Kadaster NL, Ordnance Survey, Esri Japan, MER, Esri China (Hong Kong), (c) OpenStreetMap contributors, and the GIS User Community

