

## KENT HILLS 3: KENT HILLS WIND FARM EXPANSION PHASE 3

Appendix B Consultation Information

# Appendix B CONSULTATION INFORMATION

## **KENT HILLS 3: KENT HILLS WIND FARM EXPANSION PHASE 3**

Appendix B Consultation Information



## Kent Hills 3 Stakeholder Consultation EIA Summary Report

Renewables, Business Development

TransAlta Corporation



---

## CONTENTS

---

EXECUTIVE SUMMARY	5
1.0 STAKEHOLDER CONSULTATION REQUIREMENTS UNDER REGULATION	6
1.2 New Brunswick’s Environmental Impact Assessment Regulation	6
1.3 Department of Environment and Local Government	6
2.0 STAKEHOLDER ENGAGEMENT PROGRAM	7
2.1 Stakeholder Engagement Program Overview	7
2.2 Goals of TransAlta Stakeholder Engagement	8
2.3 Guiding Principles	8
3.0 PUBLIC AND STAKEHOLDER CONSULTATION ACTIVITIES	9
3.1 Identifying Stakeholders	9
3.2. Preliminary Consultation	9
3.3 Letter of Introduction	9
3.4 Project Information Packages	10
3.5 Consultation with the Local Community	10
3.6 Open Houses	11
3.6.1 Community Open House	11
3.6.2 Supplier Open House	13
3.7 Consultation with Government Agencies	14
3.8 Consultation with Non-Government Agencies and Stakeholder Groups	14
3.9 Consultation with Directly Affected Parties	15
3.10 Consultation with Overlapping Tenures - Mineral Rights Holders	15
3.11 First Nations Consultation	16
3.12 Timing of Consultation Activities	18
3.13 Opportunities to Comment	18
3.14 Stakeholder Issue Tracking and Commitments	18

APPENDIX A – Stakeholder Communications Activity Log	20
APPENDIX B – Stakeholder Communications Materials	33
APPENDIX C – Open House Materials	37

---

## EXECUTIVE SUMMARY

TransAlta operates a 50 turbine, 150 MW, wind farm facility at Kent Hills in the southeastern section of Elgin Parish in Albert County, NB, which was constructed from 2007 to 2010, and commissioned on December 31, 2008 (first phase) and December 31, 2010 (the first expansion). The Kent Hills Wind Farm was approved under the New Brunswick Environmental Impact Assessment (EIA) Regulation - Clean Environment Act.

TransAlta wishes to further expand the facility by five (5) turbines (Vestas V126 turbines – 3.45 MW) for an additional 17.25 MW of capacity, referred to as Kent Hills 3, the “Project”. This expansion is required to fulfill shortfalls in production realized under the former phases of development now contracted under a revised Power Purchase Arrangement with the customer, NB Power.

The project is wholly contained on Crown Lands under a License of Occupation for Exploration which will eventually convert to an amendment in the existing Lease for the wind farm and License of Occupation for Distribution and Access for the electrical gathering system and roads.

Nine locations for these turbines were considered in the predevelopment review, including four spares to be used in the situation where site-specific geotechnical conditions are considered unacceptable or where stakeholder response, environmental site conditions or construction preference warrants a change in location. Additional infrastructure required for the new turbine locations includes additional access roads and collection system, which includes the upgrade of existing forestry roads where possible. Upgrade of the 138 kV transmission line (constructed and operated by NB Power Transmission Corporation) and the substation are not necessary to accommodate this expansion.

## 1.0 STAKEHOLDER CONSULTATION REQUIREMENTS UNDER REGULATION

### 1.1 Crown Lands – NB DNR

Crown Land Lessees may be prohibited from placing a wind turbine or other infrastructure in a location that could interfere with the rights of mineral and/or oil and natural gas claimants in the area. Consultation is required with existing claimants to ensure that any potential issues can be mitigated. Written proof of consultation with claimants must accompany the Lease application.

Crown Lands may require applicants to consult with First Nation communities should there be a need to mitigate any impacts to Aboriginal or Treaty Rights in accordance with any relevant policy developed by the Province of New Brunswick. Direction and consultation provided to date by Crown Lands with identified First Nations have been provided in detail under Section 3.11. Further comment and direction is expected during the EIA Review process.

### 1.2 New Brunswick's Environmental Impact Assessment Regulation

New Brunswick's Environmental Impact Assessment Regulation (Regulation 87-83) provides a legislative framework for proactive environmental planning, including requirements for public involvement in the process. In order to fulfill the requirements of Section 6(1) of the EIA Regulation, the proponent must demonstrate that the affected public and other stakeholders have been given the opportunity to become involved in reviewing the project, and must indicate how the proponent has considered or addressed any resultant questions and concerns. This report captures those activities in accordance with this regulation.

### 1.3 Department of Environment and Local Government

The EIA submission must describe how public input has been or will be sought and considered in relation to the proposed project. Public involvement is a requirement for all registered projects. The definition of "public" includes all stakeholders (individuals, companies, agencies, organizations, interest groups, etc.) who may be affected by the project. It also includes those who may have local knowledge of the location of the proposed development that may assist in its siting or design. Where appropriate, consultation with First Nations is also required. It is the proponent's responsibility to design, implement, and document the public involvement program, and to provide documentation of the program and its results to the Department of Environment and Local Government.

#### **Minimum Requirements**

The minimum requirements for public involvement and a description of the contents of the required documentation were found in– *Minimum Proponent Sponsored Public Involvement Standards for Registered Projects*.

#### **Public Involvement Program Report Submission**



Public involvement activities must be completed and a report on public involvement activities must be submitted to Sustainable Development, Planning and Impact Evaluation Branch by the proponent within 60 days of project EIA registration.

To meet this schedule, TransAlta must make it clear to stakeholders and the general public that they must forward their comments to the proponent in a timely manner. The suggested time frames are within 25 days of the date of an Open House or within 25 days of the date of the public notice of registration issued by the proponent.

Because we have initiated our public involvement program during the project planning stage it will be included in the EIA Registration Document with the intent to streamline the review process. Stakeholders have been provided with reasonable time to respond to project details in accordance with this regulation.

### **Public Review and Comment on the EIA Report**

Once the Report is officially accepted by the Minister, a second comprehensive opportunity for public involvement in the EIA process will commence. TransAlta will continue to engage stakeholders with project updates as we progress through this regulator process.

## **2.0 STAKEHOLDER ENGAGEMENT PROGRAM**

### **2.1 Stakeholder Engagement Program Overview**

Consultation and engagement activities for the Project were focused on direct consultation with immediately affected stakeholders who;

- Reside or possess lands within 1 km of the proposed expansion areas;
- Hold lease tenures on crown land in and around the area of impact to a 1 km radius of project lands, access or distribution corridors
- Are otherwise directly impacted by the expansion as identified through site scoping and stakeholder identification activities (fire departments; traffic routes; road sharing)

The consultation program included personal telephone calls, teleconference calls, group meetings, face to face meetings, publication of newspaper notices, and the distribution of letters and Project Information Packages (PIP) to identified stakeholders. An Open House event was hosted on June 20, 2017 to reach a broader mass than those who were directly consulted. A Supplier Open House event was hosted on July 19, 2017 with the intent to determine area supplier and service availability and to discuss opportunities for vendors and individuals to provide services or products for the Project. Project information was made available on TransAlta's website.

Consultation specifically with government agencies, non-government organizations, and stakeholder groups was determined upon consultation with DENV regarding expansion project scope and anticipated requirements to update former environmental assessment work conducted for this project.

Stakeholders immediately affected, meaning those with overlapping lease tenures on Crown Lands, residents and operating businesses within 1 km of areas of interest were consulted either directly in face to face discussions or through PIP's and invitation to attend an Open House event once project siting was confirmed.

All stakeholder activities, actions and responses were recorded in TransAlta's STAR (Stakeholder Tracking) database and a summary of discussions and status is included in Appendix A – Stakeholder Consultation Summary Log.

These efforts and outcomes from this consultation is described in further detail in the remainder of this report.

## 2.2 Goals of TransAlta Stakeholder Engagement

TransAlta's Stakeholder Engagement Policy aligns with its overall strategic commitment to corporate sustainability. That policy states that the company strives to balance the environmental, social and economic implications of its business decisions and as community members they will:

- Strive to build strong, long-term relationships by collaborating with and listening to its neighbours; and
- Seek to understand the different priorities and concerns of communities.

Through information sharing, consultation and involvement, TransAlta commits to developing long-term relationships with stakeholders that enables them to provide safe, reliable and cost-effective electricity to its customers.

## 2.3 Guiding Principles

Based on a philosophy that strong stakeholder relationships strengthen their business decisions, TransAlta commits to engaging stakeholders in positive and constructive consultations based on the following adopted principles:

1. TransAlta will take the initiative in identifying and seeking out affected stakeholders. We define stakeholders as individuals or groups who could be affected by our operations.
2. The consultation process will be transparent and fair for all participants. It must be conducted in a manner so it is understood by all participants.
3. The consultation process will enhance two-way communication and may be formal (outcome focused) or informal (dialogue and information sharing).

4. The consultation process will recognize the importance of shared learning. Sharing unique viewpoints and knowledge will enhance learning and benefit TransAlta employees and stakeholders.
5. Whenever possible, participants will be involved in designing the consultation process.
6. Each consultation program will be adapted to the specifics of a project and unique needs and expectations of the community.
7. The roles and responsibilities of participants will be clearly defined and understandable.
8. The consultation process will ensure that input will be obtained and issues requiring action will be dealt with in a timely manner.
9. The results of the consultation process will be fully considered in subsequent decision making.

## 3.0 PUBLIC AND STAKEHOLDER CONSULTATION ACTIVITIES

### 3.1 Identifying Stakeholders

Project stakeholders were identified using the following means:

- Searching of land titles registries;
- Historical stakeholder information from previous Project phases;
- Compilation and review of aerial photos covering the Project Area;
- Physical search of the area to identify residences;
- Discussions with area residents;
- Referencing land ownership mapping through Service New Brunswick; and
- Consultation with NBDNR Crown Lands Branch to determine overlapping and adjacent tenures

### 3.2. Preliminary Consultation

First consultations with immediately adjacent (bordering) landowners, crown land users or land tenants began by advising landowners of TransAlta's preliminary plans for the Project. TransAlta has solicited feedback from each landowner/land tenant/leaseholder about any possible concerns that they may have regarding the Project through direct mail correspondence or conversations.

### 3.3 Letter of Introduction

Once a preliminary site plan was created, a Letter of Introduction was sent to all identified landowners/land tenants/leaseholders within a 1 km radius of the proposed Project boundary (new site locations). The letter was accompanied by a PIP (Project Information Package) together with an invitation to attend the Open House event and included contact information for any questions or comments relating to the Project.

### 3.4 Project Information Packages

Project Information Packages (PIP) were distributed to agencies identified in Appendix A – Stakeholder Communications Log and to those landowners/land tenants and lease holders within a 1 km radius of new project lands also identified in the log.

Should any project details change, a subsequent updating of project information will be circulated to the established stakeholder base.

All Project Information Packages included:

- Project Study Area
- A Project Information Summary that included the following information:
  - TransAlta company background and history in the wind energy development industry;
  - Turbine locations and proposed layout;
  - A discussion of Project timelines and Schedule;
  - A discussion on Sound and Visual Impacts; Environmental Factors, and Archaeological Research
  - Contact details for further Project information including a toll-free phone line and email contact for a company representative.
- An Invitation to attend an upcoming Open House event.

### 3.5 Consultation with the Local Community

The project is fully contained on Crown Lands within Albert County that spans an area of 1,807 km<sup>2</sup>. Project lands are situated approximately 12-13 km southeast of the closest rural community of Elgin. The population of the Parish of Elgin is approximately 892 (2016 census), predominately English speaking (975) with French (20) or Bilingual (5) community members.

If a project stakeholder has not declared a communication language preference materials have been or will be provided in English. Requests for translated materials into French will be honoured. The Official Languages Act of New Brunswick describes the rights of citizens and the obligations of the government and public bodies to acknowledge the right of all individuals to communicate with and receive services from provincial institutions in the official language of their choice.

The following methods were employed to inform the public with information on the Project:

- Personal letters of introduction with Project Information Packages mailed to property owners within 1 km of the proposed turbine locations;
- Hosting an Open House event;
- Potential request for media story to assist in communications;

- Notice of the public open house in Moncton This Week running two consecutive weeks prior to the event; and
- Project information and Open House details available on the TransAlta website.

### 3.6 Open Houses

#### 3.6.1 Community Open House

Open House events for past development phases of the project have been sparsely attended but well received by the local community.

An Open House for the Project was hosted on Tuesday, June 20, 2017 at the Turtle Creek Hall, located near the project and was catered by the local Ladies Auxiliary group who provided food and refreshments. The event was advertised for two weeks, Thursday June 8<sup>th</sup> and Thursday, June 15<sup>th</sup>, 2017 in the Moncton This Week newspaper. This is a weekly publication with a circulation of 29,291 weekly. Invitations were sent electronically via email to interested parties and distributed more broadly via social media by some groups.



The Open House was a ‘drop-in’ format with display materials posted on storyboards and other visual aids (e.g. computer monitors) providing project details. Printed materials were made available at various stations. TransAlta wind specialists were available to discuss the information provided on the storyboards and to answer any questions or concerns raised by any of the attendees. Those subject matter experts included; project biologists, business development leaders, wind farm engineering and design engineers

and specialists, construction specialist, aboriginal relations specialist, regulatory specialist, land liaison, and operations personnel.

The storyboards displayed information pertaining to various aspects of the Project such as:

- About TransAlta
- Project Description
- Project Layout
- About Wind Turbines and proposed technology
- Construction Overview
- An aerial view of site lands identifying the preliminary Project layout and residence locations
- Visual montage
- Visual Impacts – including computer generated renderings of the proposed wind farm layout from surrounding area focal points
- Bird and Bat impacts
- Wildlife Surveys
- Community Benefits
- Sound Analysis and Noise Comparisons
- Archaeological Research
- Anticipated Project Timelines

Sign-in sheets and exit surveys were provided. There were approximately 30 attendees to the Open House and 2 Exit Surveys were completed with results noted in Table 3.6.1. Open House inquiries are captured below in Table 3.6.2. The sign-in sheet and other Open House Information is provided in Appendix B.

**Table 3.6.1 Exit Survey Results – Public Open House**

Question	Yes	No
Did you receive sufficient information on wind energy and the project?	2	
Did you have any concerns regarding the project prior to attending the Open house	1	1
If yes, were your concerns addressed	1	
Do you feel wind energy is a good way to produce electricity	2	
Are there any specific issues (e.g. environmental) related to the proposal that you wish to bring to our attention		2
Do you support the Kent Hills 3 Project Expansion?	2	
Comments – One comment only - positive related to business opportunity		



**Table 3.6.2 Summary of Issues Raised by Public During Consultation**

Issue/Concern/Question	Action/Follow Up
Attendee theorized that wind turbine noise in the Kent Hills area is affecting the bull moose ability to hear mating calls of the cow moose. He attributes this to what he believes is a reduction in the moose population in the area.	No follow up action requested.
Adjacent landowner requested updated Project layout once turbine locations are finalized. He is supportive of the project	Provide once finalized.

### 3.6.2 Supplier Open House

A Supplier Open House was hosted on July 19, 2017 at the Marriott Residence in Moncton. The purpose of the Open House was to introduce the expansion project to the local business community and to provide an opportunity for businesses to give TransAlta information about their products and services to serve the construction and/or operations needs of the Kent Hills 3 Project and operating site.

The event was likewise advertised in the Moncton This Week on Thursday, July 6<sup>th</sup> and July 13<sup>th</sup>, 2017. Direct mail and electronic mail invitations were sent to identified service or supply companies including those who provided contract information at the open house or through other consultation as well as to all First Nations communities identified for the Project. A sample of the letters of invitation are attached in Appendix B.



TransAlta personnel were available to answer questions about the project, together with our Engineering, Procurement and Construction (EPC) contractor. The event was attended by 9 companies who provided information about their companies that ranged from safety supervision to electrical supply. There were no objections to the project raised.

### 3.7 Consultation with Government Agencies

TransAlta consulted with representatives from federal, provincial regulatory agencies, municipal governments, and resource managers to identify any issues specific to the proposed project to identify appropriate study areas and methods, VEC (Valued Ecological Components) scoping and mitigation strategies. Agencies that have been consulted are noted in Table 3.7

Early consultations with selected agencies on these lists were initiated as part of our preliminary scoping exercise. Some communications occurred with an intent to provide information only and did not form part of our regulatory approvals. In addition to project notification, meetings or teleconferences with certain agencies were conducted to facilitate transfer of information and to seek specific points of concern that an agency or agency representative may wish to voice. Government agencies were included in the project distribution list, and as such, have and will receive all notices and other communications sent to the distribution list. Initial communications were intended for notification of the project and to obtain information relevant to the scoping of predevelopment studies for the project. Invitations to arrange in person meetings to provide project details or to attend public consultation Open House event were provided.

**Table 3.7: Agencies Contacted During Consultation Program**

<ul style="list-style-type: none"> <li>Environment Canada (Canadian Wildlife Service)</li> </ul>	<ul style="list-style-type: none"> <li>NB Aboriginal Relations Consultation Office</li> </ul>
<ul style="list-style-type: none"> <li>Transport Canada – Aeronautical Obstruction Clearance</li> </ul>	<ul style="list-style-type: none"> <li>City of Moncton Water Department</li> </ul>
<ul style="list-style-type: none"> <li>Crown Lands Branch New Brunswick Department of Natural Resources</li> </ul>	<ul style="list-style-type: none"> <li>New Brunswick Department of Environment and Local Government</li> </ul>
<ul style="list-style-type: none"> <li>Villages of Elgin and Riverside/Albert</li> <li>City of Moncton</li> </ul>	<ul style="list-style-type: none"> <li>NB Power – As customer</li> </ul>
<ul style="list-style-type: none"> <li>Southeast Regional Services Commission/Planning/Subdivision/Building</li> </ul>	<ul style="list-style-type: none"> <li>Department of National Defense and other Radiocomms</li> </ul>
<ul style="list-style-type: none"> <li>New Brunswick Department of Wellness, Culture and Sport - Aboriginal Affairs Secretariat</li> </ul>	<ul style="list-style-type: none"> <li>New Brunswick Department of Wellness, Culture and Sport – Archaeological Services Unit</li> </ul>

### 3.8 Consultation with Non-Government Agencies and Stakeholder Groups

In addition to government agencies, non-governmental organizations (NGOs) and stakeholder groups were contacted. Table 3.8 identifies NGOs that were contacted during the consultation program to date.



**Table 3.8: Stakeholder Groups that were Contacted During Consultation Program**

<ul style="list-style-type: none"> <li>• Turtle Creek Watershed Committee</li> </ul>	<ul style="list-style-type: none"> <li>• NB All-Terrain Vehicle Federation</li> </ul>
<ul style="list-style-type: none"> <li>• New Brunswick Trappers &amp; Fur Harvesters Federation</li> </ul>	<ul style="list-style-type: none"> <li>• Fundy Biosphere Reserve</li> </ul>
<ul style="list-style-type: none"> <li>• Trailblazers ATV Association</li> </ul>	<ul style="list-style-type: none"> <li>• Nature New Brunswick</li> </ul>

### 3.9 Consultation with Directly Affected Parties

Given the confined scope of the project, most directly affected stakeholder contact occurred through direct mail and face to face contact. Table 3.9 below captures stakeholders consulted in previous phases of development at this site who were again included in our consultation efforts for this proposed expansion. These are agencies or individuals who may be directly impacted by the Project

**Table 3.9: Individuals and Businesses that were Contacted During Consultation Program**

<ul style="list-style-type: none"> <li>• Harrison Family Sugar Bush</li> </ul>	<ul style="list-style-type: none"> <li>• All Radiocommunications Licensees including DND, RCMP and others as identified in Radiocomm study</li> </ul>
<ul style="list-style-type: none"> <li>• Southeast NB Snowmobile Association (SENBSA) and NB Federation of Snowmobile Clubs</li> </ul>	<ul style="list-style-type: none"> <li>• Wireless Communications Service Providers: Rogers, Bell-Aliant Mobility, Allstream Corporation</li> </ul>
<ul style="list-style-type: none"> <li>• Dobson Trail Association (NB) Fundy Hiking Trail Association NB Trails Council Inc.</li> </ul>	<ul style="list-style-type: none"> <li>• Other overlapping tenures as identified by Crown Lands Branch – Only 3 Mineral Rights holders identified</li> </ul>
<ul style="list-style-type: none"> <li>• J.D Irving as Timber Harvesting Licensee working in the area</li> </ul>	<ul style="list-style-type: none"> <li>• Elgin/Riverside-Albert/Riverview/Hillsborough Fire Departments</li> </ul>
<ul style="list-style-type: none"> <li>• J.D. Irving Forestry and Forest Products (shared use of Roads/ deforestation planning)</li> </ul>	<ul style="list-style-type: none"> <li>• NB Trapper and Fur Harvesters Association</li> </ul>
<ul style="list-style-type: none"> <li>• NavCanada</li> </ul>	<ul style="list-style-type: none"> <li>• All landowners within 1.0 km</li> </ul>

### 3.10 Consultation with Overlapping Tenures - Mineral Rights Holders

In December 2016, TransAlta was contacted by two individuals advising of the registration of their mineral rights claims that overlap the Kent Hills project area.

In response to the notices TransAlta contacted the provided individual with DNR, Ron Shaw, Geologist to ascertain what the impacts from the registration would be on our future and existing operations. He advised of the process and explained that a registered claim gives the holder an exclusive right to explore for minerals as defined by the Mining Act. The definition excludes sand and gravel ordinary rock and many other things. The claim holder must determine who owns or leases the land and must provide notice to them. Work of a non-damaging nature may be done on the claim but any work of a damaging nature or that interferes with the use and enjoyment of the land require that the prospector complete a Form 18 Notice of Planned Work on Private Land or Form 18.1 Notice of Planned Work on Crown Land. The prospector will meet with the landowner and try and come to an agreement with respect to doing the Work. DNR receives a Notice and it gets forwarded to the Archeological Service Branch of that Department as well Aboriginal Affairs. Upon receiving a response from Archeological Services, they in turn reply to the prospector and allow the work under a stated list of conditions depending on the nature of the work.

If the exploration determines the claim has a mineable deposit, then the claim holder will need to apply for a mining lease which requires a mine plan a reclamation plan as well as approvals from the Department of Environment (DOE). The last mining lease was issued December 13, 2011. A claim is valid for one year and may be renewed if the holder submits fees. A claim expires automatically if it is not renewed on or before the expiry date.

Three mineral rights holders were identified by Crown Lands in proximity to the project area. Project information was provided via letter mail or email and where telephone contact details were provided telephone calls were made and messages were left. There was no response to either written or verbal messages from any of the three parties.

### 3.11 First Nations Consultation

TransAlta has achieved a silver designation in the Progressive Aboriginal Relations (PAR) certification program from the Canadian Council for Aboriginal Business. PAR is a corporate social responsibility certification program that confirms corporate performance in Aboriginal relations in the areas of Aboriginal business development, community engagement, employment and community investment. The performance of PAR companies is externally verified with Aboriginal stakeholders.

Given that the Project is located on Crown Land, a special emphasis is required for First Nations engagement. Our engagement program is being developed with assistance from the Aboriginal Affairs Secretariat Consultation Office, NB Crown Lands, and our own Indigenous Relations group.

After the initial project information package was sent to the Aboriginal Affairs Secretariat offices in Fredericton, TransAlta was informed that, since November 2011, the Province of New Brunswick has established a new policy to engage in consultation with those First Nations whose traditional territory might be affected by any given project. With this new protocol in place, the Aboriginal Affairs Secretariat (AAS) is responsible for ensuring that consultation occurs on behalf of the Crown. This body (AAS) works with legal counsel, technical advisors, regulatory authorities, departments, industry, First Nations and other parties to assess the risk of infringement, define the scope of the consultation process and determine whether the duty to consult has been fulfilled. According to this new approach, the information

packages are no longer sent directly to each First Nation but, the Secretariat works through several different organizations that represent the interests of the First Nations. It was determined then, that the Secretariat would work with MTI (Mi'gmawe'l Tplu'taqnn Inc); this entity representing the First Nations that TransAlta had already engaged with during previous phases of the project: Fort Folly, Buctouche, and Elsipogtog.

The consultation process includes:

- Phase 1: Pre-consultation Analysis and Planning
- Phase 2: Engagement/Consultation
- Phase 3: Accommodation
- Phase 4: Decision and Implementation

If consultation is triggered, the levels of consultation that might be required are:

- Notification
- Normal
- Deep

A representative of TransAlta's Indigenous Relations Team had a meeting with members of the Aboriginal Affairs Secretariat of New Brunswick on May 17, 2017 to go through the steps of the newly developed Duty to Consult Policy; and information packages on the project were then sent by this same Secretariat to MTI. During this same meeting, the representative of the Secretariat encouraged TransAlta to engage directly with Fort Folly First Nation to renew the relationship established during their involvement in previous phases of the project.

TransAlta's intentions are to continue engaging with MTI and Fort Folly, even if consultation is not triggered and will await the recommendations of the province and comply with that direction as well.

As part of this engagement initiative, TransAlta invited Fort Folly and MTI to an Open House event that was held at the Turtle Creek Community Hall on June 20th, 2017. MTI and Fort Folly indicated that they were not available on that date and that they would like to have a private presentation on the project. This was done at Fort Folly offices on June 19th, 2017.

TransAlta also invited Fort Folly and MTI to a Suppliers Open House held in Moncton in early July 2017, but no representatives from this community were identified among those who attended.

The Crown Lands Branch, Department of Energy and Resource Development advised First Nations groups of TransAlta's plan to conduct geotechnical work for the Kent Hills Expansion project by providing a copy of the Site Development Plan on May 12, 2017. The information provided explained that an environmental impact assessment review would be required before the project could be processed. The information was provided with the intent to begin dialogue to discuss the application. These First Nations groups were circulated:

- Chief Ann Mary Steele – Bouctouche First Nation
- Chief Alvery Paul – Esgenooetitj First Nation
- Chief William (Bill) Ward, Metepenagiag First Nation
- Chief George Ginnish, Eel Ground First Nation
- Chief Rebekkah Knockwood, Fort Folly First Nation
- Chief David Peter-Paul, Pabineau First Nation
- Chief Thomas (Everett) Martin, Eel River Bar First Nation
- Chief Kenneth Barlow, Indian Island First Nation

### 3.12 Timing of Consultation Activities

Various consultation activities commenced immediately upon achieving first draft of the site layout and where areas of interest were identified.

Consultation activities with all directly affected parties has occurred ahead of filing an application to DENV for project approval. Other requisite governmental and non-governmental consultations occurred as part of the planning process and ahead of permitting processes for both environmental approval and other project and construction permitting.

Ongoing communication will continue in the form of project updates with all parties already contacted through the consultation process to date and engagement will continue through the EIA Review process.

### 3.13 Opportunities to Comment

Stakeholders were invited to provide project feedback at each communication point beginning with project introductions, at our community Open House; through our website and via a dedicated email contact point. Stakeholder comments will continue to be tracked and addressed throughout the permitting and construction processes. Once the facility is operational TransAlta has established protocols to intake stakeholder concerns through the STARS (Stakeholder Tracking Database) System.

### 3.14 Stakeholder Issue Tracking and Commitments

Commitments made to stakeholder parties were captured in the Project Commitments Log and STAR database. The activity log in Appendix A captures all communications and activities. Table 3.14 provides a summary of commitments beyond providing regular project updates.

**Table 3.14 Stakeholder Issues/Remedies**

Stakeholder Party	Concern	Follow Up/Commitment
<b>Adjacent or Overlapping Crown Tenure</b>		
Harrison Family Maple Sugar Bush	Road washout at Prosser Brook Entrance – family has indicated concern over the years that increased traffic flow has caused issues with surface runoff and flooding onto their lease.	If any work is conducted in this area under the expansion project TA will undertake to compact and micro-seed the area impacted by erosion. Not expected at this time that expansion will impact this road  Follow up communications at construction start Include in project updates
South Eastern New Brunswick Snowmobilers Association Inc. (SENBSA)  New Brunswick Federation of Snowmobile Clubs	Suggested that stop signage at intersections could be improved and steep ditches avoided in road design  No impacts to trail system	Erect signage at both existing and new 4 way stop intersections – before Winter.  Incorporating grade request in road construction design  Include in project updates  Follow up during construction and post sign installs
<b>Area Landowner – Equipment Transportation Impact</b>		
[REDACTED]	In former phases, we have required the use of a portion of their lands to facilitate the turning radius needed for transporting large wind turbine components.	Fully supportive of expansion and amenable to allowing use of their lands  Advise at construction stage if land use is required.  Include in project updates
<b>First Nations</b>		
Fort Folly First Nation and Mi'gmawe'l Tplu'taqnn Incorporated (MTI)	Seeking opportunities to support the project.  Would like copies of former environmental reports and archaeological reports	Commitment to engage FFFN in post construction monitoring activities  Provided copies of reports as requested  Maintain ongoing correspondence and keep them apprised of Project status; invitation for participating in post-construction monitoring activities has been extended to FFFN.

## APPENDIX A – Stakeholder Communications Activity Log

Stakeholder Party	Communication Type/Date	Concern	Resolution	Action/Timing	Follow Up
Adjacent Landowners within 1 km of project area					
[REDACTED]	Project Information Package and OH Invitation sent June 6, 2017	No concerns raised	N/A	N/A	Include in project updates No further action required
[REDACTED]	Project Information Package and OH Invitation sent June 6, 2017	No concerns raised	N/A	N/A	Include in project updates No further action required
[REDACTED]	Project Information Package and OH Invitation sent June 6, 2017	No concerns raised	N/A	N/A	Include in project updates No further action required
[REDACTED]	Project Information Package and OH Invitation sent June 6, 2017	No concerns raised	N/A	N/A	Include in project updates No further action required
J.D. Irving Ltd., PO Box 5777 Station Main, Saint John, NB E2L4M3	Project Information Package and OH Invitation sent June 1, 2017	No concerns raised	N/A	N/A	Include in project updates No further action required
[REDACTED]	Project Information Package and OH Invitation sent June 6, 2017	No concerns raised	N/A	N/A	Include in project updates No further action required
[REDACTED]	Project Information Package and OH Invitation sent June 6, 2017	No concerns raised	N/A	N/A	Include in project updates No further action required
Lumsden Mining Company Ltd. 161 Wentworth Drive, Riverview, NB E1B 2T6	Project Information Package and OH Invitation sent June 6, 2017	No concerns raised	N/A	N/A	Include in project updates No further action required

Stakeholder Party	Communication Type/Date	Concern	Resolution	Action/Timing	Follow Up
[REDACTED]	Project Information Package and OH Invitation sent June 6, 2017	No concerns raised	N/A	N/A	Include in project updates  No further action required
[REDACTED]	Project Information Package and OH Invitation sent June 6, 2017	No concerns raised	N/A	N/A	Include in project updates  No further action required
Local Area Business Operations					
Quarry Owner Birch Hill Construction LTD 11 McElroy Street Moncton N.B E1C-9T2 506-854-4634	Letter of introduction: April 24, 2017  In person visit: May 16, 2017  Project Information Package and OH Invitation sent June 1, 2017	Would like to investigate ability to provide aggregates for roadwork and concrete and/or conduct work for same. Batch plant opportunity.  No concerns about existing windfarm operations in vicinity of quarry.	N/A	Advise EPC and include in stakeholder discussions	Include in project updates  No further action required
Harrison Family Maple Sugar Bush Rick and Beulah Harrison 122 Wendell Street NB E1B 3V5  Steve Harrison [REDACTED]	Project Information Package and OH Invitation sent June 1, 2017  Attended Open House on June 20, 2017	Road washout at Prosser Brook Entrance – family has indicated concern over the years that increased traffic flow has caused issues with surface runoff and flooding onto their lease.	Road is shared by other industries- Forestry. Some erosion has occurred.	Direct discussion with Rick Harrison at Open House by Ryan Schmidt  At this time, it is not expected that the expansion project will impact this road.	If any work is conducted in this area under the expansion project TA will undertake to compact and microseed the area impacted by erosion  Follow up communications at construction start  Include in project updates
Area Landowner – Equipment Transportation Impact					



Stakeholder Party	Communication Type/Date	Concern	Resolution	Action/Timing	Follow Up
<p>██████████ ██████████████████ ██████████████████ ██████████████████</p>	<p>In person Introduction: April 24, 2017</p> <p>In person visit on May 15, 2017</p> <p>Project Information Package and OH Invitation sent June 1, 2017</p> <p>Open House attendees on June 20, 2017</p>	<p>In former phases, we have required the use of a portion of their lands to facilitate the turning radius needed for transporting large wind turbine components.</p>	<p>██████████ are supportive of the expansion project and if needed would be amenable to allowing TA to use their lands for this purpose again. They were satisfied with the restoration of their lands under former phases.</p>	<p>Advise if a use agreement is required.</p>	<p>Advise at construction stage if land use is required.</p> <p>Include in project updates</p>
Stakeholders with Crown Land Tenure -					
<p>Type: Mineral Claim Holder Bob Rzyziuk Prospector ██████████</p>	<p>Letter of Introduction: December 15, 2016</p> <p>Phone message: January 13, 2017 Email: April 12, 2017</p> <p>Project Information Package and OH Invitation sent June 6, 2017</p>	<p>Registered Prospecting Mineral Claim 7887 Teahan Mine area, over project area.</p> <p>No concerns raised</p>	<p>N/A</p>	<p>Continue with project information supply as long as Claim remains active</p>	<p>Include in project updates No further action required by TA as per Crown Lands</p>

Stakeholder Party	Communication Type/Date	Concern	Resolution	Action/Timing	Follow Up
Type: Mineral Claim Holder Robert Murray Avalon Staking Partnership [REDACTED] [REDACTED] [REDACTED]	Letter of Introduction: December 15, 2016  Phone message: January 13, 2017  Email: April 12, 2017  Project Information Package and OH Invitation sent June 1, 2017	Claim 7848 and 7876 Prospecting Claim  No concerns raised	N/A	Continue with project information supply as long as Claim remains active	Include in project updates No further action required by TA as per Crown Lands
Type: Mineral Claim Holder Wayne Carroll - [REDACTED] No address available from Crown Lands	Email Introduction: April 12, 2017  Project Information Package and OH Invitation sent June 1, 2017	Mineral rights claim holder  No concerns raised	N/A	Continue with project information supply as long as Claim remains active	Include in project updates No further action required by TA as per Crown Lands
Type: Overlapping Crown Tenure  South Eastern New Brunswick Snowmobilers Association Inc. (SENBSA) Wayne Carter, President - [REDACTED] Steve McGarrity - [REDACTED] 7 <a href="mailto:senbsa@senbsa.com">senbsa@senbsa.com</a> [REDACTED] [REDACTED]  New Brunswick Federation of Snowmobile Clubs Ross Antworth, General Manager. [REDACTED] [REDACTED]	Incoming call from Steve McGarrity: January 24, 2017  Letter of Introduction: April 25, 2017  In person, joint meeting with SENBSA and NBFSC– May 15, 2017 attended by:  SENBSA: Wayne Carter, President Dave Garland, Director Steve McGarrity, Director	Requesting consultation on turbine placement off their Route 34.  At the meeting, we presented turbine locations and discussed ongoing coordinated site use. No issues with expansion or current operations.	Assured that consultation would occur ahead of any finalized project design.  Erect signage at both existing and new 4 way stop intersections – Recommended telephone pole for sturdiness in plowing conditions	Committed to erecting signage before the late 2017 snowmobile season.	Include in project updates  Follow up during construction and post sign installs

Stakeholder Party	Communication Type/Date	Concern	Resolution	Action/Timing	Follow Up
<p>[REDACTED]</p>	<p>NBFSC Ross Antworth – GM, Kyle Good, Trail Mgr.</p> <p>Project Information Package and OH Invitation sent June 6, 2017</p> <p>Member SENBSA (Jim Coates) attended Open House</p>	<p>Suggested that stop signage at intersections could be improved and requested that steep ditches avoided in road design.</p> <p>Stated that ongoing membership education and risk management for users is a commitment from the club.</p>	<p>Incorporating grade request in road construction design</p>	<p>Design request passed on to EPC Contractor</p>	
<p>Type: Overlapping Crown Tenure</p> <p>Dobson Trail Association (NB) and Fundy Hiking Trail Association</p> <p>Ken Arsenault – President Fundy Hiking Trail Association</p> <p>Jessie Wilson – Dobson Trail Master New Brunswick Trails Council Inc.</p> <p>Poul Jorgensen, Executive Director pjorgensen@sentiernbtrail.com Ancillary Building, 1350 Regent St, Fredericton, NB E3C 2G6</p>	<p>Email of Introduction: April 24, 2017</p> <p>In Person Meeting: May 17, 2017 with:</p> <ul style="list-style-type: none"> <li>• President: Ken Arsenault</li> <li>• Vice President: Ashley Arrowsmith</li> <li>• Trail Master, Dobson Trail: Jessie Arrowsmith</li> <li>• Past President &amp; Trail Enhancement: Alonzo Leger</li> </ul>	<p>Proposed turbine location at Hayward Pinnacle appears close to Dobson Trail and this landmark. Turbine at this location may affect area views from this vantage point.</p> <p>Groups were supportive of the proposed expansion and communicated that the wind farm</p>	<p>TransAlta elected to abandon prospective sites (2) in the Hayward Pinnacle area</p>	<p>Complete – locations changed to alternate a distance away from Hayward Pinnacle</p>	<p>Continue communications and relationship building</p> <p>Provide project updates</p>

Stakeholder Party	Communication Type/Date	Concern	Resolution	Action/Timing	Follow Up
	Project Information Package and OH Invitation sent June 1, 2017	has been a positive addition to the trail area, attracting more hikers to the area. There were no complaints or concerns raised about current operations			
Crown Land Users					
Trailblazers ATV Association Albert County Trail Blazers Inc. - Aron Tavender, President <a href="mailto:webmaster@albertcountytrailblazers.com">webmaster@albertcountytrailblazers.com</a> [REDACTED]	Email Introduction: April 24, 2017  Project Information Package and OH Invitation sent June 1, 2017	No concerns raised	N/A	N/A	Include in project updates  No further action required
New Brunswick All-Terrain Vehicle Federation Roger Daigle, President [REDACTED]  Jacques Poirier, General Manager <a href="mailto:jacques.poirier@nbatving.com">jacques.poirier@nbatving.com</a> 1925 Hanwell Road, Unit C, Hanwell, NB, E3C 1M4	Project Information Package and OH Invitation sent June 5, 2017	No concerns raised	N/A	N/A	Include in project updates  No further action required
NB Trappers and Fur Harvesters Federation – Michael Michaud, President New Brunswick  Trappers & Fur Harvesters Federation	Project Information Package and OH Invitation sent June 1, 2017	No concerns raised	N/A	N/A	Include in project updates  No further action required

Stakeholder Party	Communication Type/Date	Concern	Resolution	Action/Timing	Follow Up
Michel Michaud, President , ██████████ ████████████████████ ██████					
Albert County Hunters Association Allen Beers, President ████████████████████ ██████	Project Information Package and OH Invitation sent June 1, 2017	No concerns raised	N/A	N/A	Include in project updates  No further action required
<b>Special Interest Groups – NGO's – Stakeholders</b>					
Turtle Creek Watershed Committee Petitcodiac Watershed Alliance c/o Heather Fraser	Project Information Package and OH Invitation sent June 1, 2017	No concerns raised	N/A	N/A	Include in project updates  No further action required
City of Moncton, Water Supply Natural Resource Program Coordinator, Heather Fraser	Letter of Introduction and invitation to meet sent May 3, 2017  Site tour: May 17, 2017  Project Information Package and OH Invitation sent June 1, 2017	Appropriate signage and transportation impacts over bridge decks should be considered in transportation planning	Communicate to turbine supplier and logistics group	Upon turbine order	Include in project updates  No further action required
Fundy Biosphere Reserve Jennifer Dingman, PhD, Executive Director, PO Box 1650, Station Main, Moncton, NB, E1C 9X5	Project Information Package and OH Invitation sent June 1, 2017	No concerns raised	N/A	N/A	Include in project updates  No further action required
Nature NB Vanessa Roy-McDougall, Executive Director, <a href="mailto:nbf@nb.aibn.com">nbf@nb.aibn.com</a> 924 Prospect Street, Suite 7, Fredericton, NB E3B 2T9	Project Information Package and OH Invitation sent June 1, 2017	No concerns raised	N/A	N/A	Include in project updates  No further action required

Stakeholder Party	Communication Type/Date	Concern	Resolution	Action/Timing	Follow Up
Village of Riverside-Albert Mayor Jim Campbell, <a href="mailto:villra@nbnet.nb.ca">villra@nbnet.nb.ca</a> 5823 King Street, Riverside-Albert, NB E4H 4B4	Project Information Package and OH Invitation sent June 5, 2017	No concerns raised	N/A	N/A	Include in project updates  No further action required
Alaina Lockhart Member of Parliament Fundy Royal, New Brunswick 599 Main Street, Suite 104 Hampton, NB E5N 6C2	Project Information Package and OH Invitation sent June 1, 2017	No concerns raised	N/A	N/A	Include in project updates  No further action required
Brian Keirstead Member of the Legislative Assembly Albert, 1037 Route 114, Lower Cloverdale, NB E1J 1A1	Project Information Package and OH Invitation sent June 1, 2017	No concerns raised	N/A	N/A	Include in project updates  No further action required
Radar/Radiocommunication Licensees					
NavCanada	Land Use Submission Proposal filed April 28, 2017	Project will be reviewed under this submission process	TBD	TBD	TBD
All Radiocommunications Licensees including: <ul style="list-style-type: none"> <li>• Department of National Defense</li> <li>• RCMP</li> <li>• Environment Canada</li> <li>• Canadian Coast Guard</li> </ul>	Circulation via:  DNV GL sent notification to agencies July 1, 2017.	Review pending	TBD	TBD	TBD
Wireless Communications Service Providers: Rogers, Bell-Aliant Mobility, Allstream Corporation	Circulation via:  DNV GL inventoried all communication systems registered with Industry Canada and set appropriate consultation zones on July	Review pending	TBD	TBD	TBD

Stakeholder Party	Communication Type/Date	Concern	Resolution	Action/Timing	Follow Up
	1, 2017. Project information circulated				
Local Service Facilities					
Local Fire Departments: <ul style="list-style-type: none"> <li>• Riverside- Albert</li> <li>• Elgin</li> <li>• Hillsborough</li> </ul>	Project Information Package and OH Invitation sent June 1, 2017	No concerns raised	N/A	N/A	Include in project updates  Preconstruction meeting to be scheduled  Ongoing relationship communication
Open House Attendees with Comments					
[REDACTED]  Have cottage in the area approximately 2.8 km from nearest turbine [REDACTED] [REDACTED] [REDACTED]	Open House Attendees	Would like copy of final layout once locations are determined.  Indicated support of the project on the Exit Survey	Send layout	Once final	Final layout will be included in project update materials  Provide project updates
[REDACTED] [REDACTED]	Open House Attendee	Theorizes wind turbine noise is interfering with area bull moose ability to hear cows mating call	None requested	None	Provide project updates
First Nations					
Samantha Robichaud, Energy and Mines Coordinator Mi'gmawe'l Tplu'taqnn Incorporated (MTI)	In person meeting June 19, 2017	Inclusion in project updates and potential opportunities to participate in future			Maintain ongoing correspondence with MTI and keep them apprised of Project status; invitation for participating in post-

Stakeholder Party	Communication Type/Date	Concern	Resolution	Action/Timing	Follow Up
40 MicMac Road, Eel Ground, New Brunswick E1V 4B1		studies related to the Project.			construction monitoring activities has been extended to MTI
Fort Folly First Nation, 38 Bernard Trail PO Box 1007, Dorchester NB, E4K 3V5	Project Information Package and OH Invitation sent June 1, 2017  In Person Meeting with TA June 19, 2017  In attendance: <ul style="list-style-type: none"> <li>• Chief Rebecca Knockwood, Fort Folly First Nation</li> <li>• Tina Milner, Financial/Office Administrator, Fort Folly First Nation</li> <li>• Samantha Robichaud – Energy and Mines Coordinator – MTI</li> <li>• Karen Narvie, Liaison, MTI</li> <li>• Derek A. Simon – Burchells LLP (Legal representative)</li> </ul>	Inclusion of MTI expertise in archaeological studies  Request to provide EA results (Executive Summary Only) from former phases of development.	Invitation by email to participate in studies with TA consultant May 25, 2017  Share summarized results and Executive Summaries from Kent Hills 1 & 2  Seek opportunities to include in	Archaeological work was conducted on July 20-23 and MTI rep could not be mobilized in time to accompany.  IK study and scope of work TBD  TA to provide to MTI and FFFN by August 1, 2017  Engage in conducting post	Ongoing relationship building and project updates  Confirm receipt of project information early September 2017 and respond to any questions relating for former work



Stakeholder Party	Communication Type/Date	Concern	Resolution	Action/Timing	Follow Up
		Desire expressed to continue to provide project support	project development activities	construction monitoring  Include in invitation to Supplier Fair	
Chief Arren Sock Elsipogtog First Nation R.R. # 1, 373 Big Cove Road, Elsipogtog First Nation, NB E4W 2S3	Project Information Package and OH Invitation sent June 1, 2017	No concerns raised	N/A	N/A	Ongoing project updates
Chief Ann Mary Simon Buctouche Band 9 Reserve Road, Buctouche Reserve, NB, E4S 4G2	Project Information Package and OH Invitation sent June 1, 2017	No concerns raised	N/A	N/A	Ongoing project updates
Aboriginal Affairs Secretariat to: <ul style="list-style-type: none"> <li>• Chief Ann Mary Steele Bouctouche First Nation</li> <li>• Chief Alvery Paul Esgenoopetitj First Nation</li> <li>• Chief William Ward Metepenagiag First Nation</li> <li>• Chief George Ginnish Eel Ground First Nation</li> <li>• Chief Rebecca Knockwood Fort Folly First Nation</li> <li>• Chief David Peter-Paul</li> </ul>	Letter sent by AAS regarding Crown Lands Licence of Occupation and Exploration describing process for application to proceed to wind farm development with invitation to contact the crown	None communicated to date	N/A	Ongoing communication through EIA process	As requested

Stakeholder Party	Communication Type/Date	Concern	Resolution	Action/Timing	Follow Up
Pabineau First Nation <ul style="list-style-type: none"> <li>• Chief Thomas (Everett) Martin Eel River Bar First Nation</li> <li>• Chief Kenneth Barlow Indian Island First Nation</li> </ul>					

## **APPENDIX B – STAKEHOLDER COMMUNICATIONS MATERIALS**

Stakeholder Letter Samples

PIP



TransAlta Corporation  
Box 1900, Station "M"  
110-12 Avenue SW  
Calgary, AB T2P 2M1

T : (877) 547-3365 ext. 3  
E: projects@transalta.com  
www.transalta.com

«Date», 2017

«Title»  
«CO»  
«Type»  
«Address»  
«City», «Prov» «Postal\_Code»

**RE: Kent Hills 3 Wind Project Update & Open House Invitation**

Dear «Title»,

TransAlta's 150 MW Kent Hills Wind Farm has been a fixture in Albert County, New Brunswick since it first began operating in 2008. Representing the province's first wind facility and the largest wind farm in New Brunswick, we are excited to announce our plans to complete a small expansion the Kent Hills Wind Farm.

Recognizing the positive attributes of our current Kent Hills Wind Farm site from its desirable wind resource, environmental suitability, and location to existing infrastructure, TransAlta is proposing to expand the site by an additional 17.25 MW to provide clean, affordable and reliable wind power for the people of New Brunswick.

As part of our consultation and engagement plans for Kent Hills 3 Wind Project, we're pleased to include a Project Information Package outlining details of the expansion project, and an invitation to attend a free BBQ and public Open House to learn more about the project. Full details of the BBQ and Open House are below:

**When:** Tuesday, June 20, 2017  
**Time:** 4:00-7:00 p.m.  
**Where:** Turtle Creek Hall  
838 Route 910, Turtle Creek

This public Open House is an informal drop-in event with interactive stations providing information on all aspects of the project. Wind experts from TransAlta's Growth, Land, Operations, Construction, and Environmental teams will be on hand to answer questions regarding the project, TransAlta's operating history in New Brunswick, and any other general wind inquiries. This is your opportunity to ask questions and provide your feedback about the Kent Hills 3 Wind Project. Our goal is to ensure that you leave the Open House with a greater understanding of our development and construction plans as we move forward.

If you have any questions in advance of the Kent Hills 3 Wind Project Open House, please do not hesitate to contact us at 1.877.547.3365 ext. 3 or email [projects@transalta.com](mailto:projects@transalta.com).

We look forward to seeing you on June 20<sup>th</sup>!

Sincerely,

**TRANSALTA CORPORATION**

Ryan Schmidt  
Project Lead





**If you have any questions or if you'd like more information about TransAlta or the Kent Hills 3 Wind Project, please contact us:**

**[www.transalta.com](http://www.transalta.com)**

Toll Free: 1.877.547.3365 ext. 3

Email: [projects@transalta.com](mailto:projects@transalta.com)



# Kent Hills 3 Wind Project

Project Information  
June 2017

## Project Overview

TransAlta is pleased to announce a proposed 17.25 megawatt (MW) expansion of our existing 150 MW Kent Hills Wind Farm.

The Kent Hills 3 Wind Project will be located near our Kent Hills Wind Farm on approximately 5 to 10 acres of Crown Land. The Project will consist of five Vestas V126 turbines. Each turbine will have a nameplate capacity of 3.45 MW for a total of 17.25 MW, increasing the Kent Hills Wind Farm to a total operating capacity of approximately 167 MW. As part of the regulatory process, TransAlta is submitting an Environmental Impact Assessment to the province of New Brunswick in August 2017. If environmental approvals are received, TransAlta will begin the construction phase which is expected to begin in Spring 2018.

## Quick Facts

Location	55 km southwest of Moncton
Project Size	17.25 MW
Turbines & Technology	5 - Vestas V126
Turbine Tower Height	117 meters
Rotor Diameter	126 meters
Project Total Acres	5-10 acres of Crown Land (approximate)

## About TransAlta

TransAlta is a Canadian company and is Canada's largest wind generator and brings more than 105 years of experience working in the renewable electricity sector throughout Canada, the United States and Australia. TransAlta has over 8,700 MW of net capacity in operation which is comprised of a diverse mix of fuel types including, wind, solar, hydro, and natural gas.

We currently own/operate 1,419 MW of wind power and are one of Canada's most experienced builders, owners and operators of wind energy facilities with 21 operating wind farms. TransAlta developed and constructed phase 1 and phase 2 of the Kent Hills Wind Farm, New Brunswick's first wind farm, which began operations in 2008. Currently, 51% of New Brunswick's wind generation capacity is produced by TransAlta's Kent Hills Wind Farm alone.



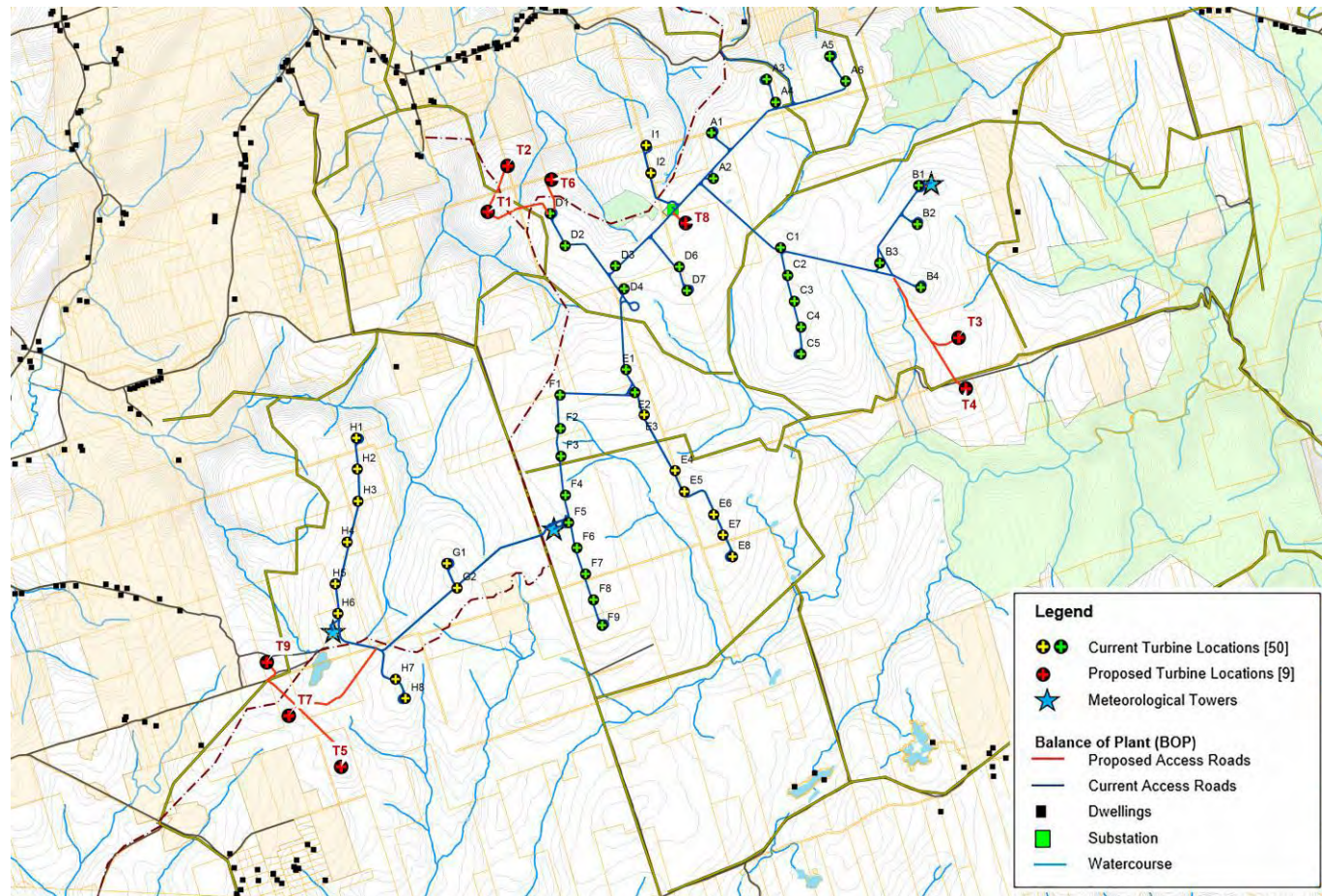




## Location & Proposed Layout

The Kent Hills 3 Wind Project is located 55 km southwest of Moncton on Crown Lands in Albert County, New Brunswick near the Caledonia Gorge. The land is most commonly used by local residents and visitors for recreational purposes, and is also subject to some logging activities. We expect the Project to have a very small footprint on the proposed Crown Lands, therefore having little to no impact on recreational uses throughout the life of the project. Wherever possible the project will make use of existing logging roads and areas to minimize disruption to the habitat.

The map below outlines possible turbine locations for the proposed project. TransAlta's priority locations are labeled as T3, T4, T5, T7 and T9. The remaining turbine locations will be used as potential back-up locations in case geotechnical, stakeholder and environmental feedback determines that one of the priority locations is not feasible. Initial stakeholder feedback revealed that turbine location T1 is near Hayward Pinnacle, a popular hiking destination, so this turbine location has been deprioritized to respect this important recreational use.



## Schedule and Timing

Public Open House  
Environmental Baseline Surveys / Reporting

June 20, 2017  
Spring/Summer/Fall 2017

Environmental Impact Assessment Submission  
Environmental Impact Assessment Approval  
Construction  
Commercial Operations Date

August 2017  
January 2018  
Spring 2018 - Fall 2018  
Fall 2018

## Sound and Visual Impacts

We have designed the wind farm to meet acceptable acoustic impacts over a full range of wind speeds using industry established standards, and following provincial guidelines. Acceptable sound levels are usually measured in decibels (dB) that are A- weighted, meaning that it approximates human hearing. The dB level of a typical wind turbine outside of a residence is similar to the dB level in a quiet bedroom.

Visual impact is an important consideration in wind farm design. We utilize visual modeling software to assist us in creating a layout that minimizes impact on view-scapes wherever possible. Turbines are painted an off-white colour, which is found to be the least intrusive under the widest variety of light conditions.

## Environmental Factors

The Project is subject to the New Brunswick Environmental Impact Assessment (EIA) - *Clean Environment Act* regulation and as such requires an EIA registration. The purpose of the EIA is to identify potential biophysical and socio-cultural effects pertaining to the project prior to the commencement of construction, and recommend mitigation measures.

TransAlta has knowledge of the sensitive wildlife habitat and unique environmental features in the area having previously conducted a full-suite of pre-construction environmental baseline surveys from 2006 to 2008 and post-construction monitoring studies from 2009 to 2012 for the Kent Hills 1 and Kent Hills 2 study areas.

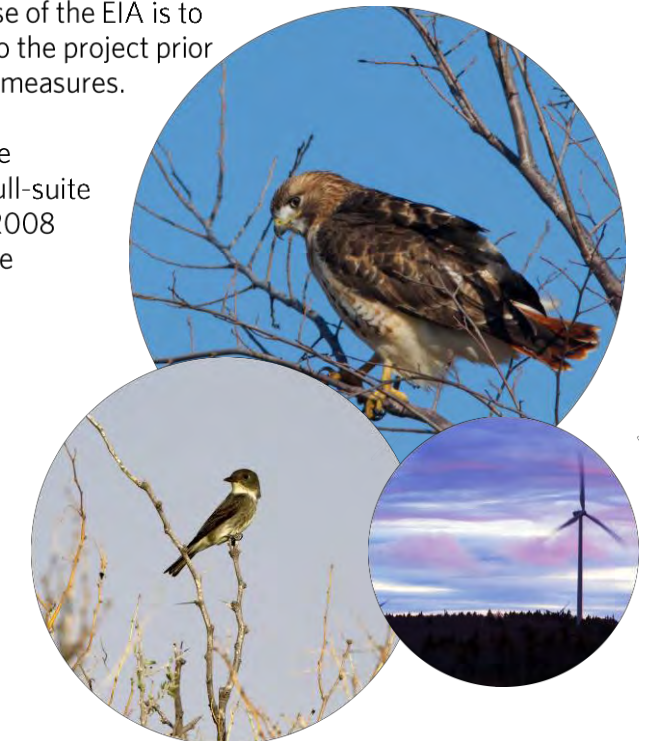
As part of the EIA submission for the Kent Hills 3 Wind Project, TransAlta is completing additional studies in 2017 with an emphasis on birds, bats and species at risk.

## Archaeology Research

Archaeology studies, scheduled for June 2017 will provide valuable insight into land uses by early settlers in the area. The project will avoid the impact of any archaeological artifacts and will be safeguarded throughout the life of the project.

## Contact Us

We welcome your involvement and encourage you to contact us with any questions or concerns regarding the proposed Kent Hills 3 Wind Project or any other general inquiries related to wind energy.









## **APPENDIX C – OPEN HOUSE MATERIALS**

Open House Storyboards

Open House Exit Survey

Open House Sign In Sheet





## Welcome to the Kent Hills 3 Wind Project Open House.

Visit our various displays which outline different aspects of the project.

Our experienced wind staff are available to answer any of your questions or discuss any of your interests.

This is a great opportunity to provide us with your input, and we welcome your feedback.

**Thank you for attending and for taking the time to learn more about the Kent Hills 3 Wind Project.**

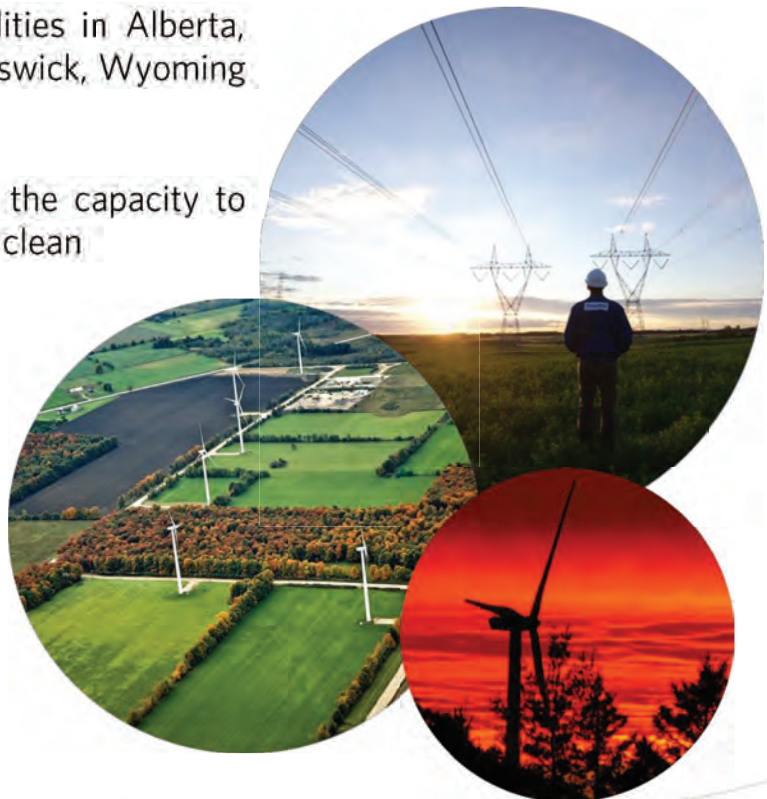




## Who is TransAlta

TransAlta is Canada's largest wind generator and growing.

- TransAlta has over 105 years of generation experience
- Owner of Canada's first commercial wind farm located in Alberta
- TransAlta owns and operates a diverse generation fleet comprised of natural gas, wind, hydro, solar and coal facilities for a total generation portfolio of nearly 10,000 MW
- Own/operate 21 wind facilities in Alberta, Ontario, Quebec, New Brunswick, Wyoming and Minnesota
- Fleet of 907 turbines with the capacity to generate over 1,400 MW of clean renewable energy







## Project Description

- Located near the current Kent Hills Wind Farm approximately 55 km southwest of Moncton in Albert County
- The Kent Hills 3 Wind Project will have minimal impact on the land-use allowing for the continued use of recreational trails, maple sugar harvesting, and logging
- Addition of 5 wind turbines each having a nameplate capacity of 3.45 MW
- Expanding the Kent Hills Wind Farm by 17.25 MW for a total capacity of approximately 167 MW
- The turbines will be on towers 117 meters in height with a rotor diameter of 126 meters





## Community Benefits

Wind power is a clean and renewable source of electricity that provides benefits for the communities where they are hosted, including:

**Employment opportunities** for local residents and community members during construction of the project and during operations of the wind farm.

**Increase in purchases** of local goods and services during construction of the project.

**Investment in community** initiatives and programs.







## Environmental Assessment

Comprehensive baseline environmental surveys have been conducted (and are ongoing) at the site by TransAlta following guidelines and protocols recommended by New Brunswick Department of Environment and Local Government. Surveys included:

- Winter Bird Surveys
- Spring Bird Migration
- Summer Breeding Birds
- Summer Breeding Bats
- Wetland Surveys
- Fall Bird Migration
- Fall Bat Migration
- Rare Plant Surveys
- Archaeological Field Surveys

All environmental findings will be summarized in a formal Environmental Impact Assessment report and provided to the New Brunswick Department of Environment and Local Government for review.





## Environmental Site Conditions

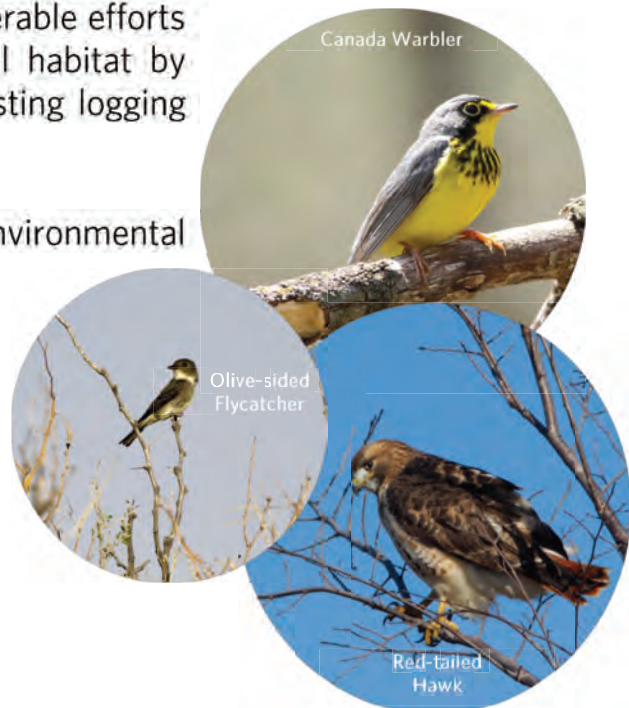
The Kent Hills 3 Wind Project area is situated on lands that have been historically used for recreation, maple sugar harvesting and timber harvesting. The area is heavily treed, supporting animals that are typical of forested areas in Albert County and across much of southern New Brunswick.

Ongoing field work and constraints mapping will assist with avoidance of wetlands, wildlife features (e.g. nests) archaeological finds, and other sensitive features, in accordance with provincial guidelines and recommendations, or best management practices.

In addition, TransAlta has made considerable efforts to minimize disturbance of the natural habitat by selecting turbine locations that use existing logging roads and previously cleared areas.

Some notable species observed during environmental surveys included the following:

- Canada Warbler
- Red-tailed Hawk
- Olive-sided Flycatcher
- Common Nighthawk



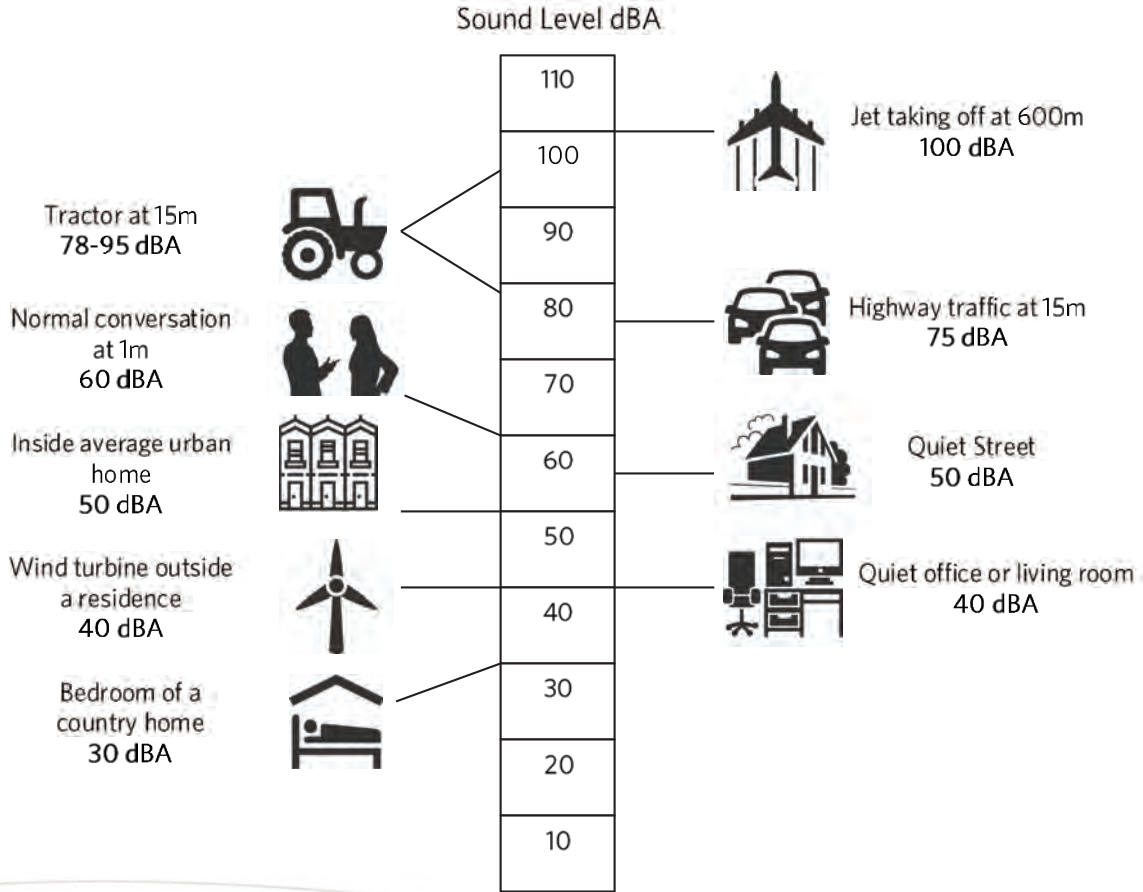




# Sound Levels

Acceptable sound levels are usually measured in decibels (dB) that are A-weighted, meaning that it approximates human hearing. We design the project layout to ensure we meet acceptable sound levels, as set out by the province. In this case, these levels are in the range of what one would expect to measure in a quiet office or living room.

## Sound Levels of Familiar Sources





## Predicted Sound Levels

Sound produced by the wind farm is different with various wind speeds. As wind speed increases, sound produced by the wind turbines also increases.

To meet guidelines, we design the project to meet acceptable sound levels even at higher wind speeds, while considering the sound already generated by the current Kent Hills wind turbines.

This sound map shows the predicted sound levels produced by the wind turbines when they produce at maximum rated power, which is representative of maximum noise emissions.

As wind speed increases so does the sound of the wind itself, which additionally masks the sound of the turbines.

This project has been designed to meet PSL (Permissible Sound Levels) that we observe on other projects.





## Visual Landscape

Wind Turbines have been a permanent fixture in Albert County since 2008.

As part of our pre-development work, we look at how turbines may be viewed by residents, landowners and visitors, and model views of the project as a best practice for siting and design.

We utilize visual software to simulate the look of the turbines on the landscape. You can see examples of these simulations on the screens nearby.

Turbines are painted an off-white colour, which is found to be the least intrusive under the widest variety of light conditions. Transport Canada requires that wind turbines be lit for aircraft safety, and we do so following lighting plans that produce the minimum impact from day and night-time lighting.





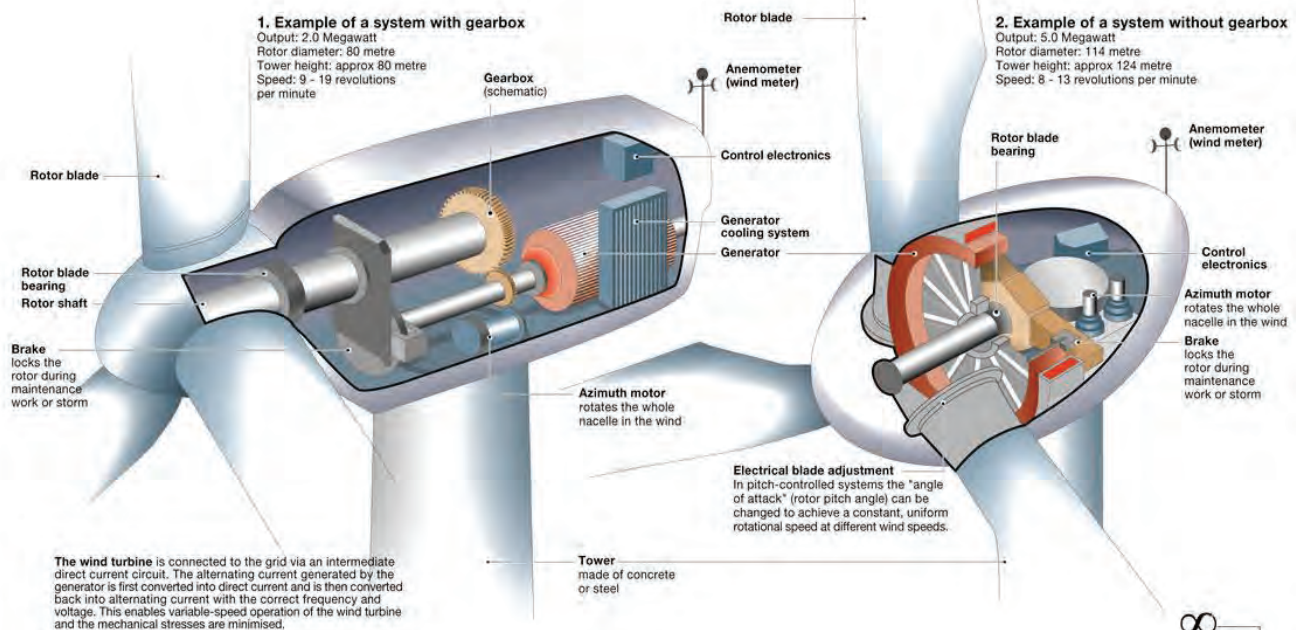
# Turbine Technology

**Nameplate Capacity.** 5 Vestas V126 wind turbines will be added to the Kent Hills Wind Farm. The nameplate capacity of each wind turbine is 3.45 MW.

**Tower Height and Diameter.** The turbines will be on towers 117 meters in height with a rotor diameter of 126 meters.

## Wind energy

Two different design principles have established themselves for wind turbines: Systems with gearbox (1.) increase the low speed of the generator to a favourable speed for the generator.







## Archaeological and First Nations Studies

Humans have inhabited this area for hundreds of years, and some reminders of the past survive as archaeological artifacts.

To preserve archaeological artifacts and to ensure no disruption to traditional activities or sites, TransAlta and members of the Fort Folly First Nation participated in a Heritage Resource Impact Assessment (HRIA) as part of the Kent Hills Phase 1 and Phase 2 project development.

Protecting the integrity of these important archaeological resources remains a priority for TransAlta throughout the life of the project.

As part of the Environmental Impact Assessment, TransAlta will complete a supplemental Archaeological study, to cover the proposed footprint of the Kent Hills 3 Wind Project.

We will continue to engage with the local First Nation communities throughout the process to obtain input from their traditional knowledge.







## Wind Project Construction

**Manufacturing.** Wind turbine component parts are manufactured and pre-assembled at the factory, then shipped to the wind farm site where the final assembly takes place.

**Site Preparation and Construction.** Work crews prepare turbine sites by building access roads, preparing turbine foundations and reassembling turbine components. A crane is used to erect turbine towers and install the nacelles and rotors with their hubs and blades.

**Commissioning.** During the final development phase, the electrical collection network is installed and connected to the grid through the substation. Final testing is completed before the wind farm becomes fully operational.

**Operation and Maintenance.** Activities that are performed on a regular basis throughout the project's life include monitoring and analyzing performance, conducting environmental surveys and performing preventive maintenance and repairs on the turbines and other components of the facility.





## Kent Hills Wind Farm History

**New Brunswick's First Wind Farm.** TransAlta developed and constructed Phase 1 and Phase 2 of the Kent Hills Wind Farm – New Brunswick's first wind farm.

Construction of the first phase began in the spring of 2008 and was completed late December 2008. The second phase began construction in spring 2010 and was completed in early December 2010.

**Powering Homes.** The current Kent Hills Wind Farm has a total capacity of 150 MW. Annually, it can produce 440,000 megawatt-hours of electricity – enough to power 49,000 New Brunswick homes.

**Contributing to Renewable Goals.** The Government of New Brunswick is committed to increasing provincial electricity generation from new renewable sources to 40% by 2020. Currently, approximately 28 per cent of the electricity consumed in the province comes from renewables.

Currently, 51% of New Brunswick's wind generation capacity is produced by TransAlta's Kent Hills Wind Farm alone.







## Thank You

Please take the time to tell us what you think of the project using the survey and comment sheets provided.

We look forward to working with all stakeholders as we continue to advance the Kent Hills 3 Wind Project.

We hope to meet with you again.

For more information about TransAlta and the Kent Hills 3 Wind Project, please visit:

[www.transalta.com](http://www.transalta.com)

Email: [projects@transalta.com](mailto:projects@transalta.com)

Tel: 1.877.547.3365 ext. 3











# Kent Hills 3 Wind Project Community Member Survey

Name: \_\_\_\_\_ Telephone: \_\_\_\_\_

Address: \_\_\_\_\_

City: \_\_\_\_\_ Postal Code: \_\_\_\_\_

Did you receive sufficient information on wind energy and our project?

Yes       No

Did you have any concerns regarding the project prior to attending the open house?

Yes       No

If yes, were your concerns addressed?

Yes       No

\_\_\_\_\_  
\_\_\_\_\_

Do you feel wind energy is a good way to produce electricity?

Yes       No

\_\_\_\_\_  
\_\_\_\_\_

Are there any specific issues (e.g. environmental) related to the proposal that you wish to bring to our attention?

Yes       No

\_\_\_\_\_  
\_\_\_\_\_

Do you support the Kent Hills 3 Project expansion?

Yes       No       Require More Information

Additional Comments:

\_\_\_\_\_  
\_\_\_\_\_  
\_\_\_\_\_

*This material will be maintained on file and may be included in project documentation. Unless indicated otherwise, personal information and all comments may become part of the public record and may be released as part of project submissions/applications.*

