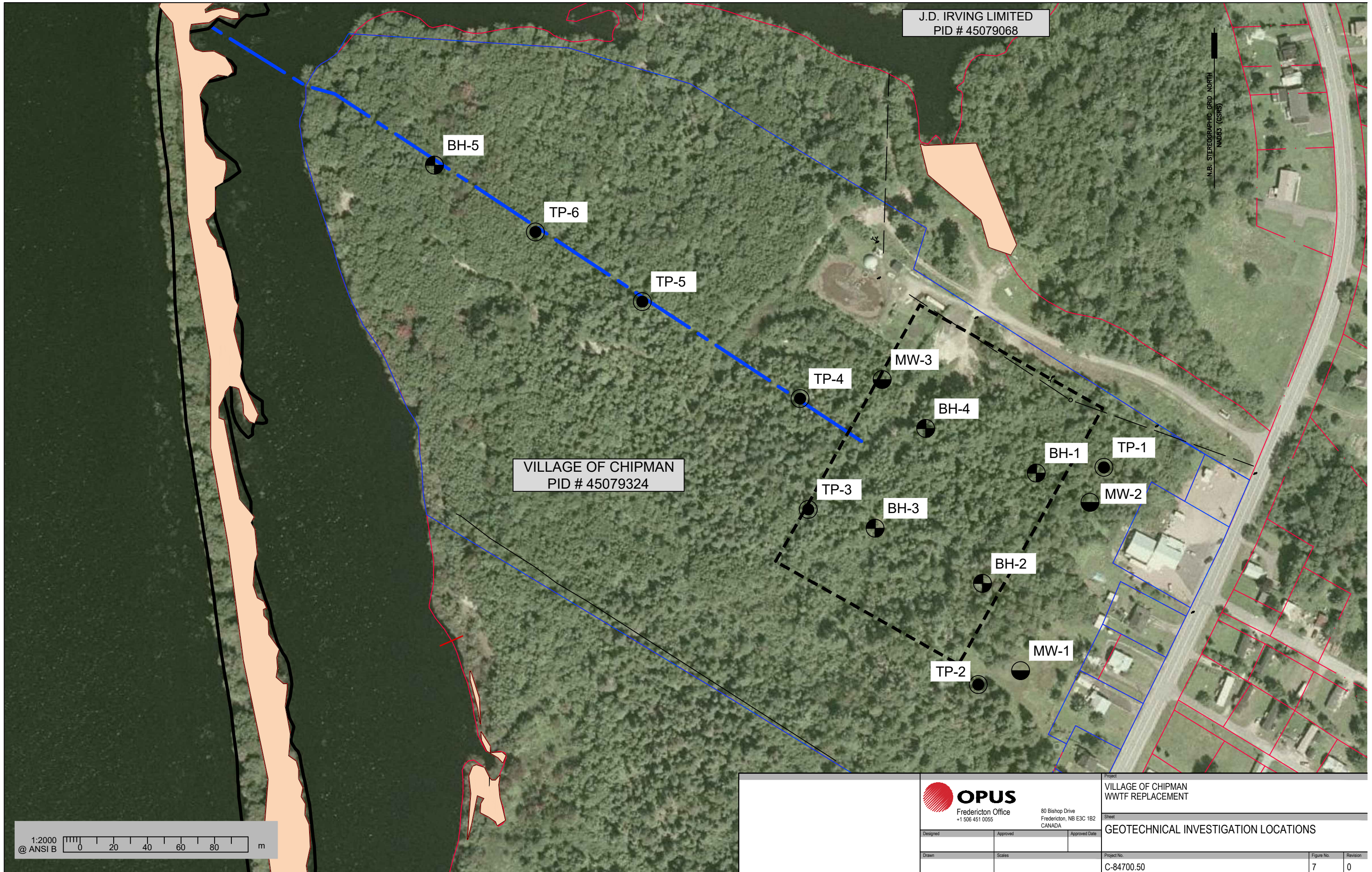


Appendix G

Geotechnical Investigation Locations – *Figure 7*



VILLAGE OF CHIPMAN
PID # 45079324

J.D. IRVING LIMITED
PID # 45079068

N.B. STEREOGRAPHIC GRID - NORTH
NAD83 (CSRS)

1:2000 @ ANSI B 0 20 40 60 80 m



80 Bishop Drive
Fredericton, NB E3C 1B2
CANADA

Project
VILLAGE OF CHIPMAN
WWTF REPLACEMENT

Sheet
GEOTECHNICAL INVESTIGATION LOCATIONS

Designed	Approved	Approved Date

Drawn	Scales

Project No.	Figure No.	Revision
C-84700.50	7	0