



COVID-19 Report

**REPORTING PERIOD:
MAY 22 TO MAY 28, 2022 (WEEK 21)**

May 31
Department of Health





SUMMARY

n = 554 New PCR confirmed cases ¹	n = 3 Deaths ¹	n = 64528 Cases are resolved	n = 865 Cases are active ²
--	-------------------------------------	--	---

n = 25 Current hospitalizations ^{2,3} (non-ICU and ICU)	n = 2 Current ICU ^{2,3}	n = 25 Seven-day moving average (hospitalizations)	n = 79 Seven-day moving average (cases)
---	--	---	--

HIGHLIGHTS

- The number of PCR confirmed cases has decreased this week compared to last week.
- There was a decrease in the number of hospital admissions for COVID-19 this week (14) compared to last week (21).
- The number of active hospitalizations has decreased this week (25) compared to last week (27).
- The number of deaths has decreased this week (3) compared to last week (5).
- The highest portion of hospitalizations for COVID-19 is among individuals aged 60-79.
- Individuals that are unprotected by vaccine continue to have the highest rate of hospitalization for COVID-19 and death.

¹ Reported during Sunday, May 22 to Saturday, May 28, 2022 (week 21).

² Status as of 11:59pm on Saturday, May 28, 2022.

³ Confirmed cases hospitalized for COVID-19.

COVID-19 LABORATORY DATA⁴

Table 1: The total number of PCR (polymerase chain reaction) and positive self-reported POCT (point of care) tests performed for COVID-19 by zone.

Zone	PCR Tests (Change)	Positive POCT (Change)
Zone 1	316930 (+2539)	21532 (+115)
Zone 2	142156 (+483)	15525 (+121)
Zone 3	153800 (+658)	15346 (+153)
Zone 4	80511 (+163)	3872 (+13)
Zone 5	44779 (+80)	1672 (+2)
Zone 6	63524 (+294)	6031 (+40)
Zone 7	37356 (+84)	3222 (+7)
Total	839056 (+4301)	67200 (+451)

Table 2: Total number of PCR confirmed COVID-19 cases.

Zone	Current reporting week	Cumulative confirmed	Number of resolved	Number of deceased	Number of active ⁵	Seven-day moving average
Zone 1	127	20788	20467	112	209	18
Zone 2	110	14704	14458	70	176	16
Zone 3	176	12228	11877	66	285	25
Zone 4	26	5553	5455	65	33	4
Zone 5	11	2693	2651	29	13	2
Zone 6	85	5955	5788	48	119	12
Zone 7	19	3891	3832	29	30	3
Total	554	65812	64528	419	865	79

⁴ Source: George Dumont Laboratory extracts and self-reported POCT database

⁵ Status as of 11:59pm on Saturday, May 28, 2022



Figure 1: Seven-day moving average of PCR confirmed COVID-19 cases by report date from December 5, 2021 to May 28, 2022.

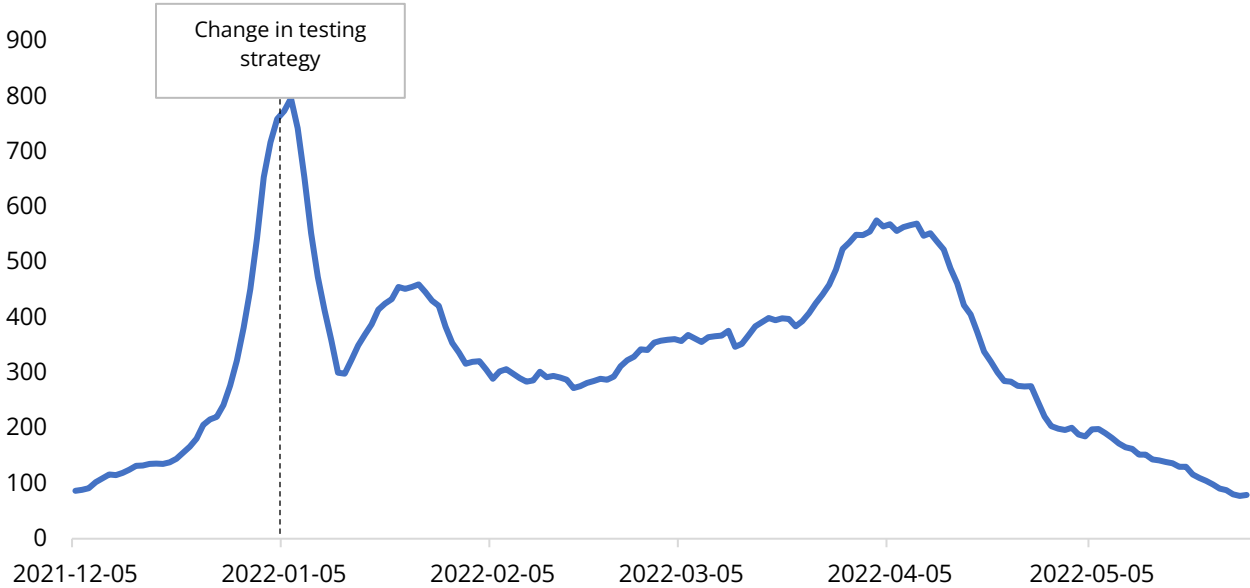


Figure 2: Seven-day moving average of PCR confirmed COVID-19 cases by zone and report date from December 5, 2022 to May 28, 2022.

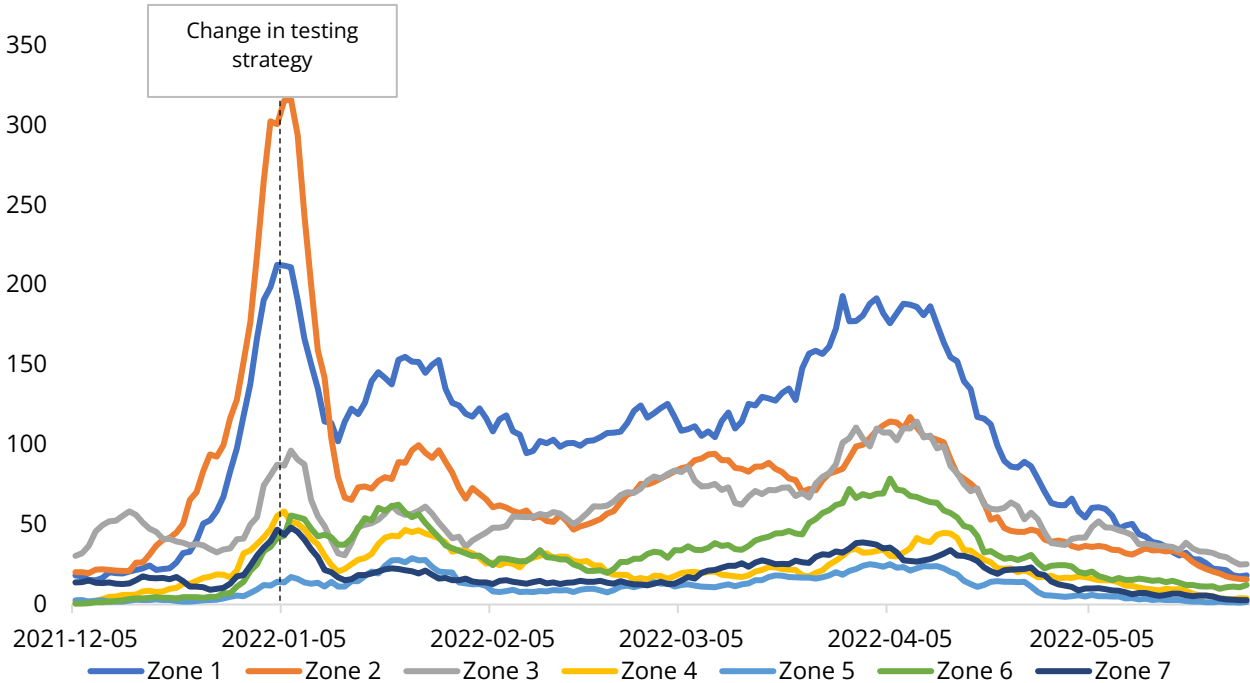


Table 3: Demographics of PCR confirmed COVID-19 cases in New Brunswick by reporting week, current and previous, and cumulative, up to May 28, 2022.

Age range	Current Reporting Week		Previous Reporting Week		Cumulative	
	Number	Percent	Number	Percent	Number	Percent
< 10 years old	16	2.9%	25	3.3%	4303	6.5%
10 - 19 years old	9	1.6%	7	0.9%	4151	6.3%
20 - 29 years old	47	8.5%	73	9.5%	9200	14.0%
30 - 39 years old	59	10.6%	81	10.5%	9785	14.9%
40 - 49 years old	66	11.9%	97	12.6%	9340	14.2%
50 - 59 years old	126	22.7%	159	20.7%	11018	16.7%
60 - 69 years old	90	16.2%	132	17.2%	7831	11.9%
70 - 79 years old	70	12.6%	95	12.4%	4949	7.5%
80 - 89 years old	55	9.9%	81	10.5%	3600	5.5%
90+ years old	16	2.9%	18	2.3%	1635	2.5%
Total	554	100.0%	768	100.0%	65812	100.0%
Vaccination status ⁶	Number	Percent	Number	Percent	Number ⁷	Percent
Protected	410	74.0%	582	75.8%	36551	64.1%
Unprotected	144	26.0%	186	24.2%	20490	35.9%
Total	554	100.0%	768	100.0%	57041	100.0%

⁶Protected refers to boosted or fully vaccinated less than six months. Unprotected refers to fully vaccinated more than six months, partially vaccinated, and unvaccinated.

⁷Cases reported since December 5, 2021.

COVID-19 HOSPITALIZATIONS⁸ AND DEATH⁹ SURVEILLANCE

Table 4: Hospitalizations for COVID-19 in New Brunswick, by age groups for reporting week, previous and current, and cumulative (Data up to May 28, 2022).

Age range	Total admissions (non-ICU and ICU)			ICU admissions			Resolved or discharg- ed	Deceased ¹⁰
	Current reporting week	Previous reporting week	Cumulative	Current reporting week	Previous reporting week	Cumulative	Cumulative	Cumulative
< 10 years old	0	0	32	0	0	1	32	0
10 - 19 years old	1	1	14	0	0	1	13	0
20 - 29 years old	0	0	38	0	0	12	35	2
30 - 39 years old	0	0	45	0	0	11	41	3
40 - 49 years old	0	0	101	0	0	39	93	15
50 - 59 years old	2	4	172	0	1	54	157	20
60 - 69 years old	0	4	249	0	0	81	225	45
70 - 79 years old	2	4	332	0	0	89	267	117
80 - 89 years old	6	6	259	0	2	35	201	133
90+ years old	3	2	113	0	0	8	69	84
Total	14	21	1355	0	3	331	1133	419

⁸ Hospitalizations (including ICU admissions) are individuals that are hospitalized for COVID-19.

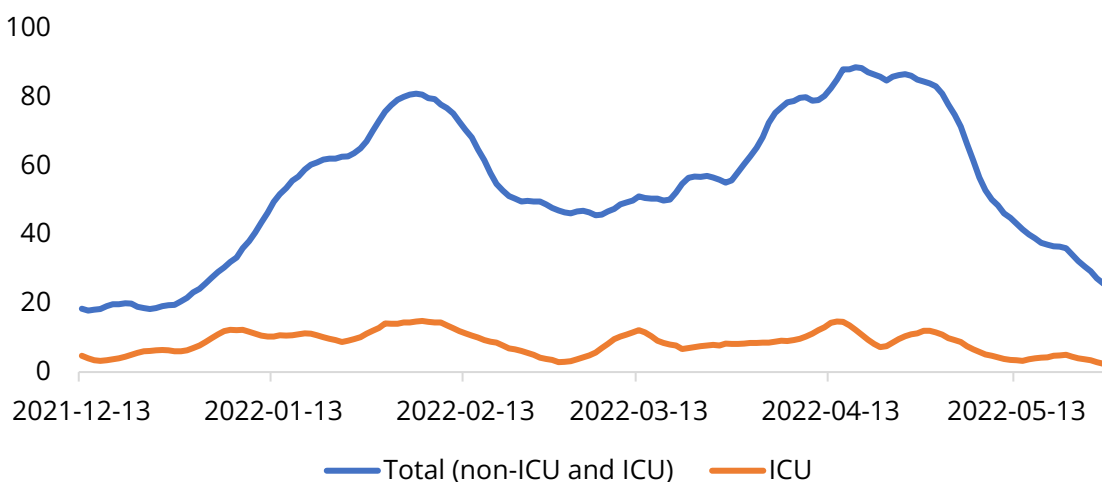
⁹ Deaths are those where COVID-19 was a primary or contributing factor to cause of death as per the attending physician.

¹⁰ Deceased cases reported within and outside of hospital.

Table 5: Vaccination status, proportion, and rate per 100,000 for hospitalized and deceased cases reported since December 5, 2021 (week 49).

Vaccination status ¹¹	Hospitalizations (non-ICU and ICU)			ICU			Deceased		
	N	%	Rate per 100,000	N	%	Rate per 100,000	N	%	Rate per 100,000
Protected	529	49.7%	121.9	68	34.2%	15.7	149	55.0%	34.3
Unprotected	536	50.3%	169.2	131	65.8%	41.4	122	45.0%	38.5
Total	1065	100.0%	141.9	199	100.0%	26.5	271	100.0%	36.1

Figure 3: Seven-day moving average of hospitalizations for COVID-19 since December 5, 2021 (week 49).



¹¹Protected refers to boosted or fully vaccinated less than six months. Unprotected refers to fully vaccinated more than six months, partially vaccinated, and unvaccinated.



National and International COVID-19 Activity

CANADA

- National data is showing a continued decrease in case counts. However, reports differ depending on the availability of data from provinces and territories. This trend may change as additional data becomes available.
- The most recent data is showing that deaths have declined over the last few weeks.

INTERNATIONAL

- Maine cases are declining following a brief increase; currently at 420 7-day average.
- Global case counts have decreased compared to the last few weeks with roughly 2.9 Million cases. Weekly case counts have returned to levels similar to before Omicron.
 - All regions are showing a decrease since last week.
 - China and the United States have the two highest case counts in the last seven days, followed by Australia, Japan and Germany.
 - Some of the countries with the highest rates continue to be clustered throughout Europe, as well as, some Eastern Asian countries, Australia, and the United States.
- Global deaths also continue to decline and are roughly 7,900 deaths/week, similar to the beginning of March 2020.