



---

# COVID-19 Report

**REPORTING PERIOD:  
MAY 15 TO MAY 21, 2022 (WEEK 20)**

**May 24**  
Department of Health





## SUMMARY

<b>n = 768</b> New PCR confirmed cases <sup>1</sup>	<b>n = 5</b> Deaths <sup>1</sup>	<b>n = 63621</b> Cases are resolved	<b>n = 1221</b> Cases are active <sup>2</sup>
--	-------------------------------------	--	--

<b>n = 27</b> Current hospitalizations <sup>2,3</sup> (non-ICU and ICU)	<b>n = 2</b> Current ICU <sup>2,3</sup>	<b>n = 34</b> Seven-day moving average (hospitalizations)	<b>n = 110</b> Seven-day moving average (cases)
---	--	---	---

## HIGHLIGHTS

- The number of PCR confirmed cases has decreased this week compared to last week.
- There was a decrease in the number of hospital admissions for COVID-19 this week (21) compared to last week (24).
- The number of active hospitalizations has decreased this week (27) compared to last week (35).
- The number of deaths remained stable (5).
- The highest portion of hospitalizations for COVID-19 is among individuals aged 60-79.
- Individuals that are unprotected by vaccine continue to have the highest rate of hospitalization for COVID-19 and death.

---

<sup>1</sup> Reported during Sunday, May 15 to Saturday, May 21, 2022 (week 20).

<sup>2</sup> Status as of 11:59pm on Saturday, May 21, 2022.

<sup>3</sup> Confirmed cases hospitalized for COVID-19.

## COVID-19 LABORATORY DATA<sup>4</sup>

**Table 1:** The total number of PCR (polymerase chain reaction) and positive self-reported POCT (point of care) tests performed for COVID-19 by zone.

Zone	PCR Tests (Change)	Positive POCT (Change)
Zone 1	314391 (+2892)	21417 (+145)
Zone 2	141673 (+621)	15404 (+162)
Zone 3	153142 (+815)	15193 (+238)
Zone 4	80348 (+132)	3859 (+20)
Zone 5	44699 (+102)	1670 (+7)
Zone 6	63230 (+357)	5991 (+51)
Zone 7	37272 (+106)	3215 (+19)
<b>Total</b>	<b>834755 (+5025)</b>	<b>66749 (+642)</b>

**Table 2:** Total number of PCR confirmed COVID-19 cases.

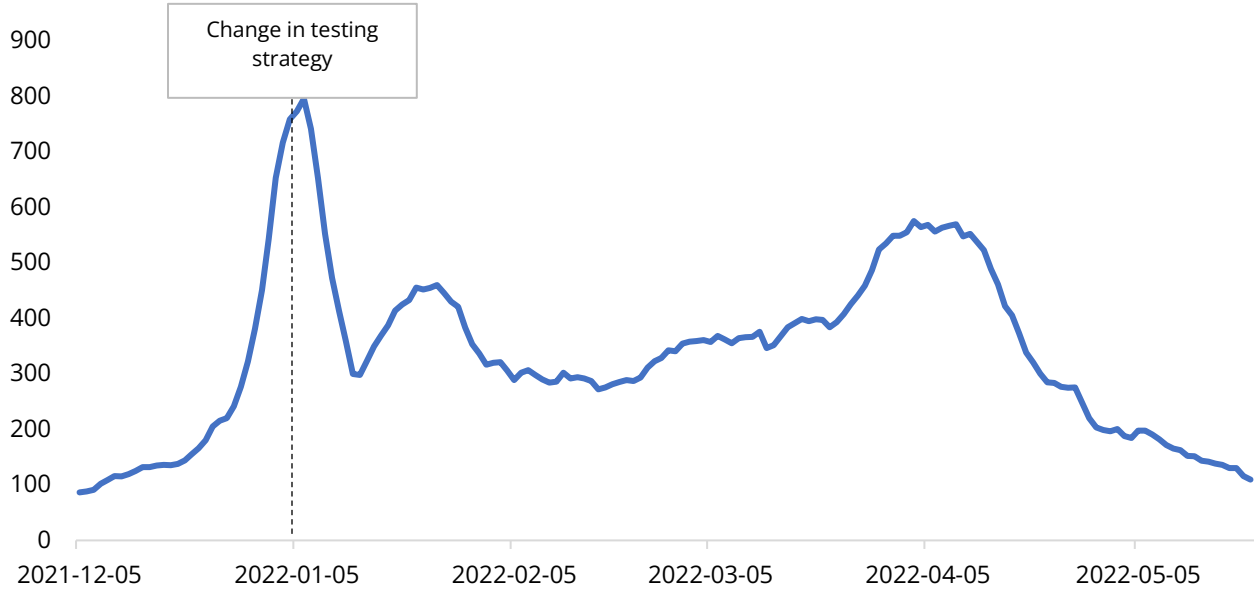
Zone	Current reporting week	Cumulative confirmed	Number of resolved	Number of deceased	Number of active <sup>5</sup>	Seven-day moving average
Zone 1	197	20661	20253	112	296	28
Zone 2	168	14594	14231	70	293	24
Zone 3	233	12052	11640	64	348	33
Zone 4	39	5527	5388	65	74	6
Zone 5	12	2682	2631	29	22	2
Zone 6	80	5870	5694	47	129	11
Zone 7	39	3872	3784	29	59	6
<b>Total</b>	<b>768</b>	<b>65258</b>	<b>63621</b>	<b>416</b>	<b>1221</b>	<b>110</b>

<sup>4</sup> Source: George Dumont Laboratory extracts and self-reported POCT database

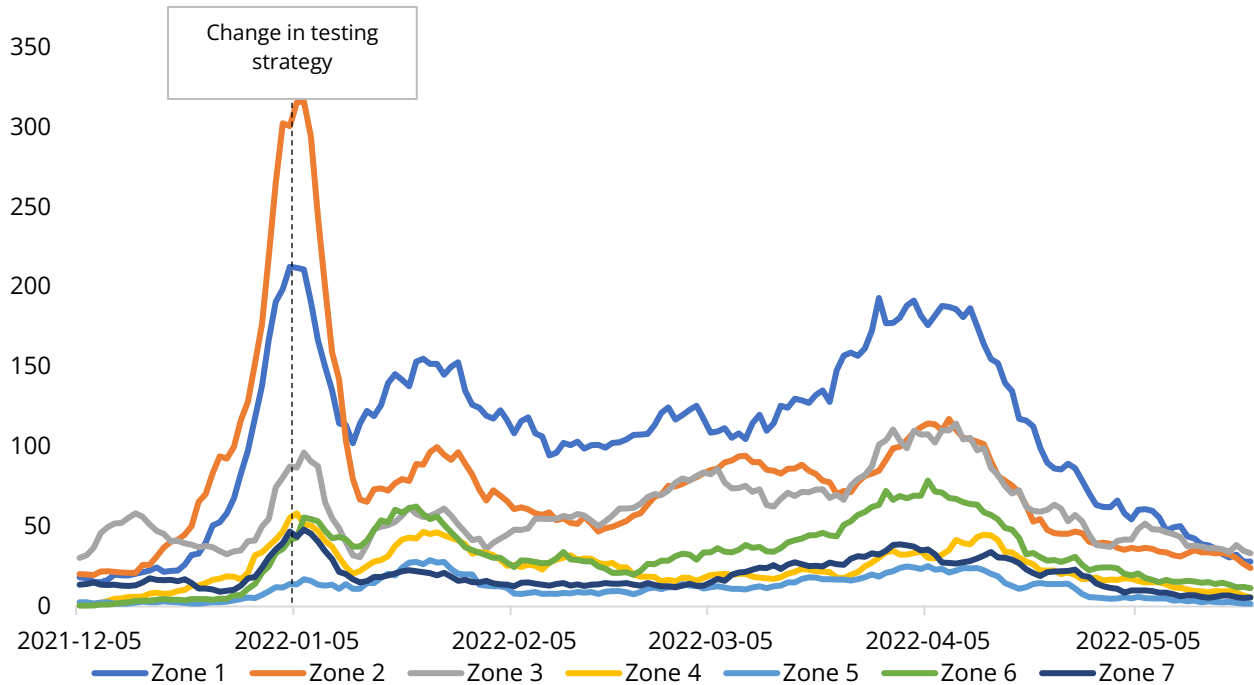
<sup>5</sup> Status as of 11:59pm on Saturday, May 21, 2022



**Figure 1:** Seven-day moving average of PCR confirmed COVID-19 cases by report date from December 5, 2021 to May 21, 2022.



**Figure 2:** Seven-day moving average of PCR confirmed COVID-19 cases by zone and report date from December 5, 2022 to May 21, 2022.



**Table 3:** Demographics of PCR confirmed COVID-19 cases in New Brunswick by reporting week, current and previous, and cumulative, up to May 21, 2022.

Age range	Current Reporting Week		Previous Reporting Week		Cumulative	
	Number	Percent	Number	Percent	Number	Percent
< 10 years old	25	3.3%	28	2.8%	4287	6.6%
10 - 19 years old	7	0.9%	21	2.1%	4142	6.3%
20 - 29 years old	73	9.5%	96	9.6%	9153	14.0%
30 - 39 years old	81	10.5%	89	8.9%	9726	14.9%
40 - 49 years old	97	12.6%	127	12.6%	9274	14.2%
50 - 59 years old	159	20.7%	181	18.0%	10892	16.7%
60 - 69 years old	132	17.2%	193	19.2%	7741	11.9%
70 - 79 years old	95	12.4%	121	12.1%	4879	7.5%
80 - 89 years old	81	10.5%	111	11.1%	3545	5.4%
90+ years old	18	2.3%	37	3.7%	1619	2.5%
<b>Total</b>	<b>768</b>	<b>100.0%</b>	<b>1004</b>	<b>100.0%</b>	<b>65258</b>	<b>100.0%</b>
Vaccination status <sup>6</sup>	Number	Percent	Number	Percent	Number <sup>7</sup>	Percent
<b>Protected</b>	582	75.8%	743	74.0%	36141	64.0%
<b>Unprotected</b>	186	24.2%	261	26.0%	20346	36.0%
<b>Total</b>	<b>768</b>	<b>100.0%</b>	<b>1004</b>	<b>100.0%</b>	<b>56487</b>	<b>100.0%</b>

<sup>6</sup>Protected refers to boosted or fully vaccinated less than six months. Unprotected refers to fully vaccinated more than six months, partially vaccinated, and unvaccinated.

<sup>7</sup>Cases reported since December 5, 2021.

## COVID-19 HOSPITALIZATIONS<sup>8</sup> AND DEATH<sup>9</sup> SURVEILLANCE

**Table 4:** Hospitalizations for COVID-19 in New Brunswick, by age groups for reporting week, previous and current, and cumulative (Data up to May 21, 2022).

Age range	Total admissions (non-ICU and ICU)			ICU admissions			Resolved or discharg- ed	Deceased <sup>10</sup>
	Current reporting week	Previous reporting week	Cumulative	Current reporting week	Previous reporting week	Cumulative	Cumulative	Cumulative
< 10 years old	0	1	32	0	0	1	32	0
10 - 19 years old	1	0	13	0	0	1	12	0
20 - 29 years old	0	1	38	0	0	12	35	2
30 - 39 years old	0	0	45	0	0	11	41	3
40 - 49 years old	0	1	101	0	0	39	92	15
50 - 59 years old	4	4	170	1	1	54	154	20
60 - 69 years old	4	4	249	0	0	81	223	45
70 - 79 years old	4	6	330	0	1	89	263	116
80 - 89 years old	6	6	253	2	0	35	197	131
90+ years old	2	1	110	0	0	8	68	84
<b>Total</b>	<b>21</b>	<b>24</b>	<b>1341</b>	<b>3</b>	<b>2</b>	<b>331</b>	<b>1117</b>	<b>416</b>

<sup>8</sup> Hospitalizations (including ICU admissions) are individuals that are hospitalized for COVID-19.

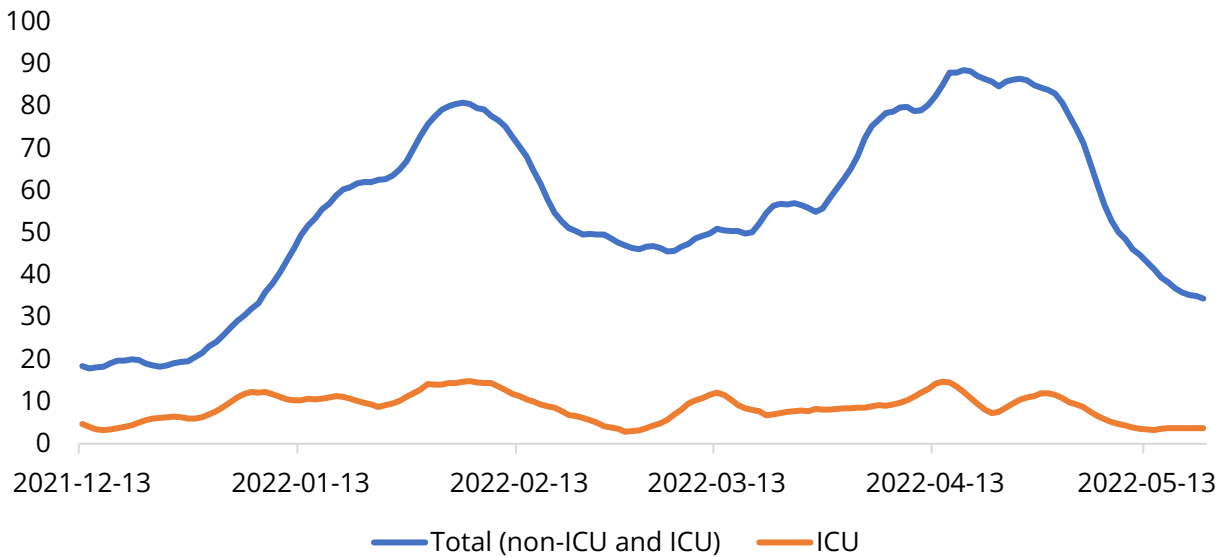
<sup>9</sup> Deaths are those where COVID-19 was a primary or contributing factor to cause of death as per the attending physician.

<sup>10</sup> Deceased cases reported within and outside of hospital.

**Table 5:** Vaccination status, proportion, and rate per 100,000 for hospitalized and deceased cases reported since December 5, 2021 (week 49).

Vaccination status <sup>11</sup>	Hospitalizations (non-ICU and ICU)			ICU			Deceased		
	N	%	Rate per 100,000	N	%	Rate per 100,000	N	%	Rate per 100,000
Protected	517	49.2%	118.4	68	34.2%	15.6	147	54.9%	33.7
Unprotected	534	50.8%	170.0	131	65.8%	41.7	121	45.1%	38.5
<b>Total</b>	<b>1051</b>	<b>100.0%</b>	<b>140.0</b>	<b>199</b>	<b>100.0%</b>	<b>26.5</b>	<b>268</b>	<b>100.0%</b>	<b>35.7</b>

**Figure 3:** Seven-day moving average of hospitalizations for COVID-19 since December 5, 2021 (week 49).



<sup>11</sup>Protected refers to boosted or fully vaccinated less than six months. Unprotected refers to fully vaccinated more than six months, partially vaccinated, and unvaccinated.



# National and International COVID-19 Activity

## **CANADA**

- National data is showing a continued decrease in case counts. However, reports differ depending on the availability of data from provinces and territories. This trend may change as additional data becomes available.
- The most recent data is showing that deaths have remained relatively stable over the last few weeks.

## **INTERNATIONAL**

- Maine cases are declining following a brief increase; currently at 586 7-day average.
- Global case counts have remained stable over the last several weeks with roughly 3.4 Million cases. Weekly case counts have returned to levels similar to before Omicron.
  - Europe, Southeast Asia, and Eastern Mediterranean regions continue to trend downwards; Africa, the Americas and Western Pacific are showing an increase.
  - China and the United States have the two highest new case counts in the last 7 days, followed by Australia, Germany, and Japan.
- Global deaths also continue to decline and are roughly 8,100 deaths/week, similar to the beginning of March 2020.