



---

# COVID-19 Report

**REPORTING PERIOD:  
JUNE 19 TO JUNE 25, 2022 (WEEK 25)**

**June 28**  
Department of Health





## SUMMARY

<b>n = 484</b> New PCR confirmed cases <sup>1</sup>	<b>n = 3</b> Deaths <sup>1</sup>	<b>n = 66643</b> Cases are resolved	<b>n = 657</b> Cases are active <sup>2</sup>
--------------------------------------------------------	-------------------------------------	----------------------------------------	-------------------------------------------------

<b>n = 15</b> Current hospitalizations <sup>2,3</sup> (non-ICU and ICU)	<b>n = 1</b> Current ICU <sup>2,3</sup>	<b>n = 18</b> Seven-day moving average (hospitalizations)	<b>n = 69</b> Seven-day moving average (cases)
-------------------------------------------------------------------------------	--------------------------------------------	-----------------------------------------------------------------	------------------------------------------------------

## HIGHLIGHTS

- The number of PCR confirmed cases has increased this week following a decrease over an 8-week period.
- There was a decrease in the number of hospital admissions for COVID-19 this week (6) compared to last week (17).
- The number of active hospitalizations has decreased this week (15) compared to last week (25).
- The number of deaths has increased this week (3) compared to last week (0).
- The highest portion of hospitalizations for COVID-19 is among individuals aged 60-79.
- Individuals that are unprotected by vaccine continue to have the highest rate of hospitalization for COVID-19 and death.
- Amongst the most recent random sample sequenced for COVID-19:
  - 0% of samples are BA.1.
  - 55% of samples are BA.2.
  - 27% of samples are BA.4.
  - 18% of samples are BA.5.

<sup>1</sup> Reported during Sunday, June 19 to Saturday, June 25, 2022 (week 25).

<sup>2</sup> Status as of 11:59pm on Saturday, June 25, 2022.

<sup>3</sup> Confirmed cases hospitalized for COVID-19.

## COVID-19 LABORATORY DATA<sup>4</sup>

**Table 1:** The total number of PCR (polymerase chain reaction) and positive self-reported POCT (point of care) tests performed for COVID-19 by zone.

Zone	PCR Tests (Change)	Positive POCT (Change)
Zone 1	319057 (+820)	21961 (+147)
Zone 2	146505 (+972)	15927 (+137)
Zone 3	159029 (+1106)	15981 (+195)
Zone 4	81131 (+188)	3907 (+14)
Zone 5	45313 (+137)	1688 (+8)
Zone 6	64684 (+331)	6136 (+28)
Zone 7	38014 (+201)	3275 (+12)
<b>Total</b>	<b>853733 (+3755)</b>	<b>68875 (+541)</b>

**Table 2:** Total number of PCR confirmed COVID-19 cases.

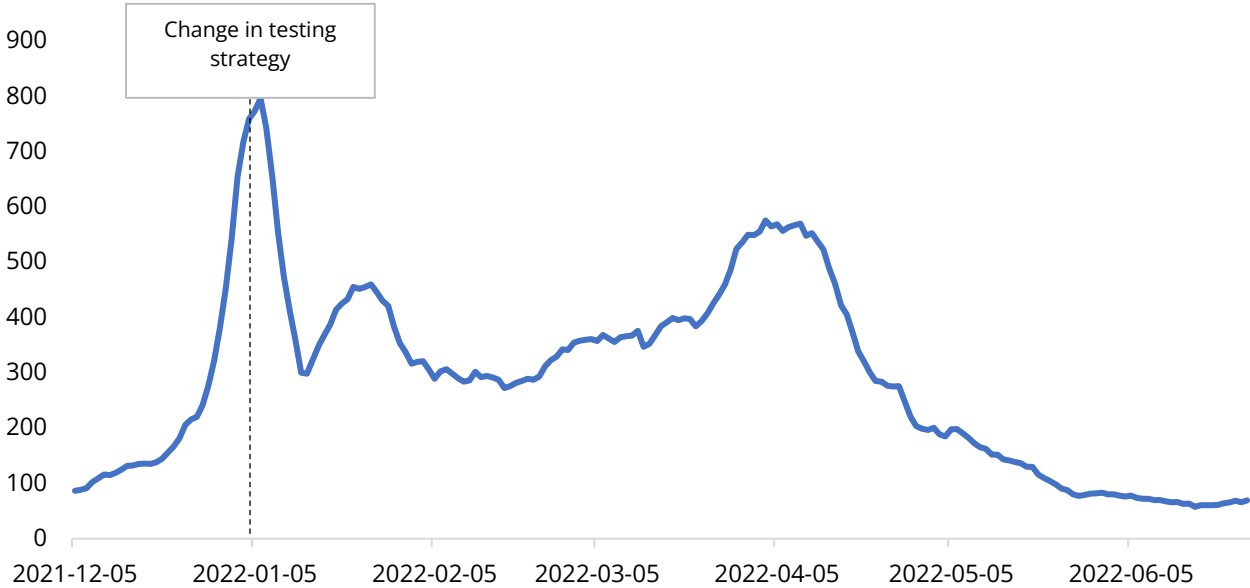
Zone	Current reporting week	Cumulative confirmed	Number of resolved	Number of deceased	Number of active <sup>5</sup>	Seven-day moving average
Zone 1	133	21315	21020	114	181	19
Zone 2	115	15123	14901	70	152	16
Zone 3	120	12724	12495	68	161	17
Zone 4	20	5645	5547	65	33	3
Zone 5	25	2746	2691	29	26	4
Zone 6	52	6172	6053	48	71	7
Zone 7	19	4000	3936	31	33	3
<b>Total</b>	<b>484</b>	<b>67725</b>	<b>66643</b>	<b>425</b>	<b>657</b>	<b>69</b>

<sup>4</sup> Source: George Dumont Laboratory extracts and self-reported POCT database

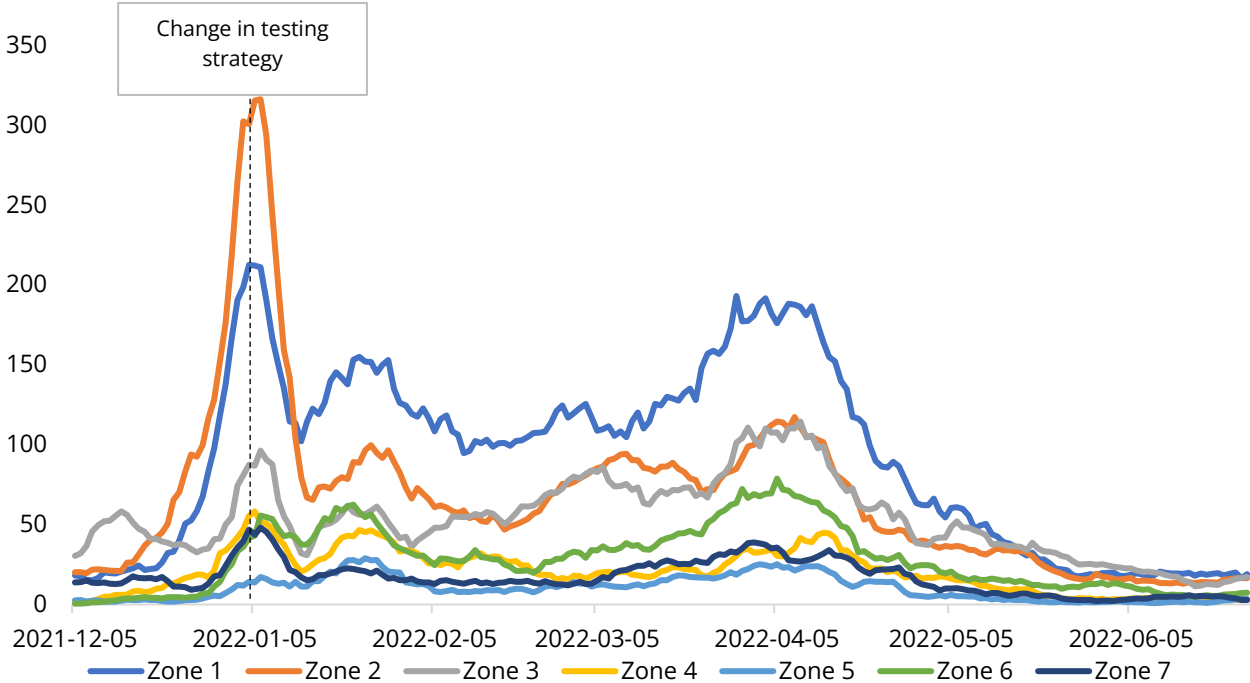
<sup>5</sup> Status as of 11:59pm on Saturday, June 25, 2022



**Figure 1:** Seven-day moving average of PCR confirmed COVID-19 cases by report date from December 5, 2021 to June 25, 2022.



**Figure 2:** Seven-day moving average of PCR confirmed COVID-19 cases by zone and report date from December 5, 2021 to June 25, 2022.



**Table 3:** Demographics of PCR confirmed COVID-19 cases in New Brunswick by reporting week, current and previous, and cumulative, up to June 25, 2022.

Age range	Current Reporting Week		Previous Reporting Week		Cumulative	
	Number	Percent	Number	Percent	Number	Percent
< 10 years old	13	2.7%	16	3.8%	4355	6.4%
10 - 19 years old	6	1.2%	3	0.7%	4174	6.2%
20 - 29 years old	59	12.2%	54	12.7%	9406	13.9%
30 - 39 years old	57	11.8%	55	12.9%	10008	14.8%
40 - 49 years old	62	12.8%	59	13.9%	9581	14.1%
50 - 59 years old	116	24.0%	83	19.5%	11436	16.9%
60 - 69 years old	76	15.7%	71	16.7%	8151	12.0%
70 - 79 years old	65	13.4%	48	11.3%	5193	7.7%
80 - 89 years old	27	5.6%	28	6.6%	3742	5.5%
90+ years old	3	0.6%	8	1.9%	1679	2.5%
<b>Total</b>	<b>484</b>	<b>100.0%</b>	<b>425</b>	<b>100.0%</b>	<b>67725</b>	<b>100.0%</b>
Vaccination status <sup>6</sup>	Number	Percent	Number	Percent	Number <sup>7</sup>	Percent
<b>Protected</b>	374	77.3%	307	72.2%	37698	63.9%
<b>Unprotected</b>	110	22.7%	118	27.8%	21256	36.1%
<b>Total</b>	<b>484</b>	<b>100.0%</b>	<b>425</b>	<b>100.0%</b>	<b>58954</b>	<b>100.0%</b>

<sup>6</sup>Protected refers to boosted or fully vaccinated less than six months. Unprotected refers to fully vaccinated more than six months, partially vaccinated, and unvaccinated.

<sup>7</sup>Cases reported since December 5, 2021.

## COVID-19 HOSPITALIZATIONS<sup>8</sup> AND DEATH<sup>9</sup> SURVEILLANCE

**Table 4:** Hospitalizations for COVID-19 in New Brunswick, by age groups for reporting week, previous and current, and cumulative (Data up to June 25, 2022).

Age range	Total admissions (non-ICU and ICU)			ICU admissions			Resolved or discharg- ed	Deceased <sup>10</sup>
	Current reporting week	Previous reporting week	Cumulative	Current reporting week	Previous reporting week	Cumulative	Cumulative	Cumulative
< 10 years old	0	1	38	0	0	1	38	0
10 - 19 years old	0	0	14	0	0	1	14	0
20 - 29 years old	0	1	40	0	0	12	38	2
30 - 39 years old	0	0	46	0	0	11	42	3
40 - 49 years old	0	0	102	0	0	39	93	15
50 - 59 years old	0	2	178	0	0	55	167	20
60 - 69 years old	3	2	268	2	2	86	241	45
70 - 79 years old	2	10	357	0	1	91	295	120
80 - 89 years old	1	1	266	0	0	36	215	134
90+ years old	0	0	117	0	0	8	77	86
<b>Total</b>	<b>6</b>	<b>17</b>	<b>1426</b>	<b>2</b>	<b>3</b>	<b>340</b>	<b>1220</b>	<b>425</b>

<sup>8</sup> Hospitalizations (including ICU admissions) are individuals that are hospitalized for COVID-19.

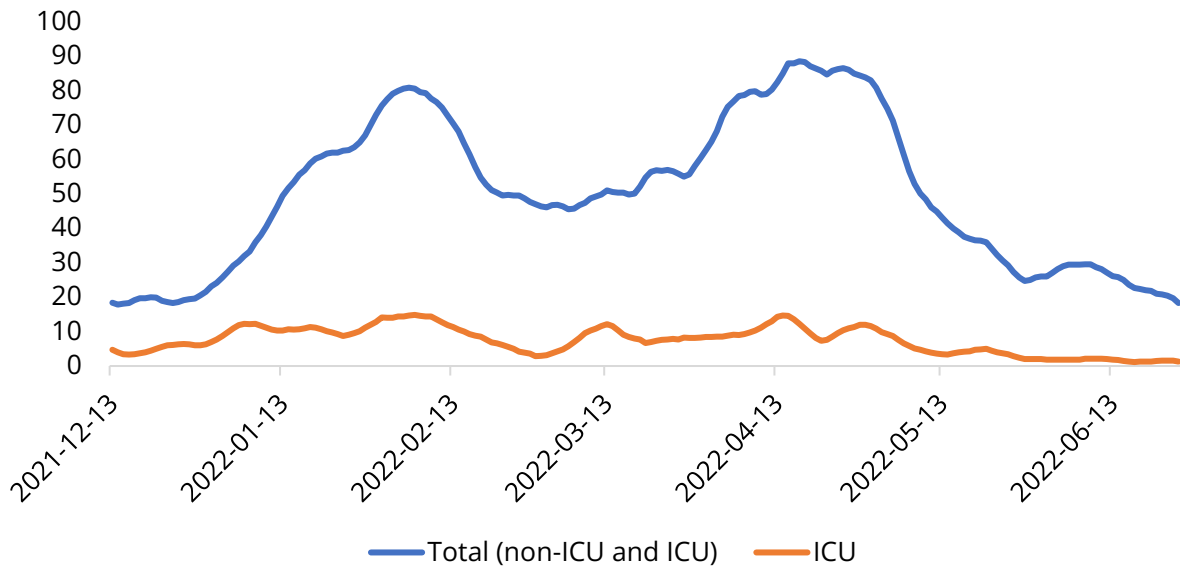
<sup>9</sup> Deaths are those where COVID-19 was a primary or contributing factor to cause of death as per the attending physician.

<sup>10</sup> Deceased cases reported within and outside of hospital.

**Table 5:** Vaccination status, proportion, and rate per 100,000 for hospitalized and deceased cases reported since December 5, 2021 (week 49).

Vaccination status <sup>11</sup>	Hospitalizations (non-ICU and ICU)			ICU			Deceased		
	N	%	Rate per 100,000	N	%	Rate per 100,000	N	%	Rate per 100,000
Protected	575	50.6%	133.8	88	40.7%	20.5	151	54.5%	35.1
Unprotected	561	49.4%	174.7	128	59.3%	39.9	126	45.5%	39.2
<b>Total</b>	<b>1136</b>	<b>100.0%</b>	<b>151.3</b>	<b>216</b>	<b>100.0%</b>	<b>28.8</b>	<b>277</b>	<b>100.0%</b>	<b>36.9</b>

**Figure 3:** Seven-day moving average of hospitalizations for COVID-19 since December 5, 2021 (week 49).



<sup>11</sup>Protected refers to boosted or fully vaccinated less than six months. Unprotected refers to fully vaccinated more than six months, partially vaccinated, and unvaccinated.



# National and International COVID-19 Activity

## CANADA

- National data is showing a continued decrease in case counts. However, data is delayed for some provinces and territories.
  - The rise in Ottawa wastewater COVID-19 detection from the previous week has leveled out and is stable this past week.
- The most recent data is showing that deaths continue to decline.

## INTERNATIONAL

- Maine cases have decreased over the last 3-weeks; currently at a 162 7-day average.
- Global case counts have remained relatively stable with a minimal increase in case counts over the last several weeks. There were roughly 3.6 Million cases last week.
  - The Americas, Western Pacific, and Africa regions are showing a decrease while the Eastern Mediterranean, South-East Asia, and Europe are showing slight increases.
    - Britain is experiencing their third major surge of the year, likely driven by BA.4 and BA.5.
  - Germany and the United States have the two highest case counts in the last seven days, followed by China, France, and Italy.
  - Some of the countries with the highest rates are clustered throughout central Europe, as well as Australia, New Zealand, and Puerto Rico and Israel. Africa is reporting many countries with some of the lowest rates.
- Global deaths also continue to gradually decline.
- Over 200 countries have reported Omicron cases.
  - Both BA.4 and BA.5 sub-variants have been detected in Canada.