



---

# COVID-19 Report

**REPORTING PERIOD:  
NOVEMBER 27 TO DECEMBER 3, 2022  
(WEEK 48)**

**December 6**  
Department of Health





## SUMMARY

|  |                                     |  |   |
|--|-------------------------------------|--|---|
| <b>n = 606</b><br>New PCR confirmed cases <sup>1</sup> | <b>n = 6</b><br>Deaths <sup>1</sup> | <b>n = 81932</b><br>Cases are resolved | <b>n = 872</b><br>Cases are active <sup>2</sup> |
|--|-------------------------------------|--|---|

|   |  |   |  |
|---|--|---|--|
| <b>n = 40</b><br>Current hospitalizations <sup>2,3</sup><br>(non-ICU and ICU) | <b>n = 0</b><br>Current ICU <sup>2,3</sup> | <b>n = 34</b><br>Seven-day moving average<br>(hospitalizations) | <b>n = 88</b><br>Seven-day moving average<br>(cases) |
|---|--|---|--|

## HIGHLIGHTS

- The number of PCR confirmed cases has increased this week compared to last week.
- The number of hospital admissions for COVID-19 has increased this week (32) compared to last week (27).
- The number of active hospitalizations has increased this week (40) compared to last week (38).
- The number of deaths has remained the same this week compared to last week (6).
- The highest portion of hospitalizations for COVID-19 is among individuals aged 70-89.
- Individuals that are unprotected by vaccine continue to have the highest rate of COVID-19 ICU admissions.
- Amongst the most recent random sample sequenced for COVID-19:
  - 0% of samples are BA.1.
  - 2% of samples are BA.2.
  - 0% of samples are BA.3.
  - 7% of samples are BA.4.
  - 91% of samples are BA.5.

---

<sup>1</sup> Reported during Sunday, November 27 to Saturday, December 3, 2022 (week 48).

<sup>2</sup> Status as of 11:59pm on Saturday, December 3, 2022.

<sup>3</sup> Confirmed cases hospitalized for COVID-19.

## COVID-19 LABORATORY DATA<sup>4</sup>

**Table 1:** The total number of PCR (polymerase chain reaction) and positive self-reported POCT (point of care) tests performed for COVID-19 by zone.

| Zone         | PCR Tests (Change)    | Positive POCT (Change) |
|--------------|-----------------------|------------------------|
| Zone 1       | 343993 (+1325)        | 26662 (+161)           |
| Zone 2       | 172122 (+1208)        | 19252 (+69)            |
| Zone 3       | 187467 (+1512)        | 19868 (+113)           |
| Zone 4       | 88911 (+437)          | 4370 (+8)              |
| Zone 5       | 50007 (+241)          | 1974 (+10)             |
| Zone 6       | 74365 (+556)          | 7341 (+24)             |
| Zone 7       | 46407 (+421)          | 3825 (+20)             |
| <b>Total</b> | <b>963272 (+5700)</b> | <b>83292 (+405)</b>    |

**Table 2:** Total number of PCR confirmed COVID-19 cases.

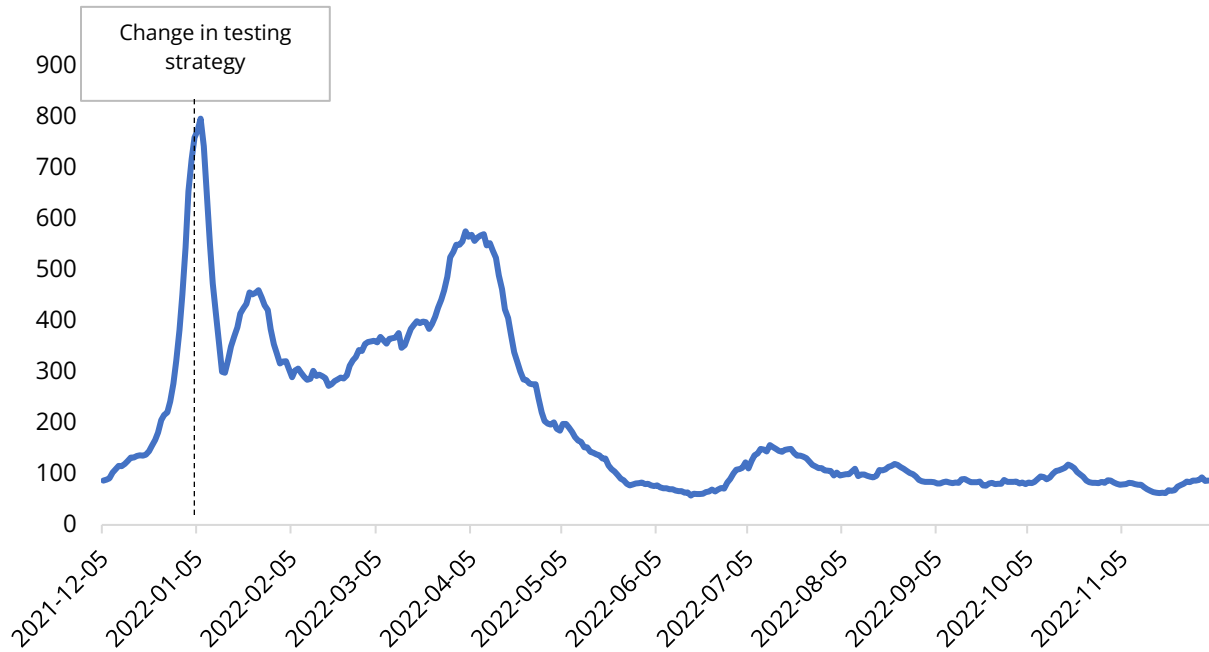
| Zone         | Current reporting week | Cumulative confirmed | Number of resolved | Number of deceased | Number of active <sup>5</sup> | Seven-day moving average |
|--------------|------------------------|----------------------|--------------------|--------------------|-------------------------------|--------------------------|
| Zone 1       | 193                    | 25972                | 25514              | 185                | 273                           | 28                       |
| Zone 2       | 124                    | 18389                | 18111              | 106                | 172                           | 18                       |
| Zone 3       | 147                    | 16067                | 15762              | 106                | 199                           | 21                       |
| Zone 4       | 29                     | 6731                 | 6603               | 81                 | 47                            | 4                        |
| Zone 5       | 34                     | 3376                 | 3288               | 36                 | 52                            | 5                        |
| Zone 6       | 47                     | 7885                 | 7743               | 71                 | 71                            | 7                        |
| Zone 7       | 32                     | 5005                 | 4911               | 36                 | 58                            | 5                        |
| <b>Total</b> | <b>606</b>             | <b>83425</b>         | <b>81932</b>       | <b>621</b>         | <b>872</b>                    | <b>88</b>                |

<sup>4</sup> Source: George Dumont Laboratory extracts and self-reported POCT database

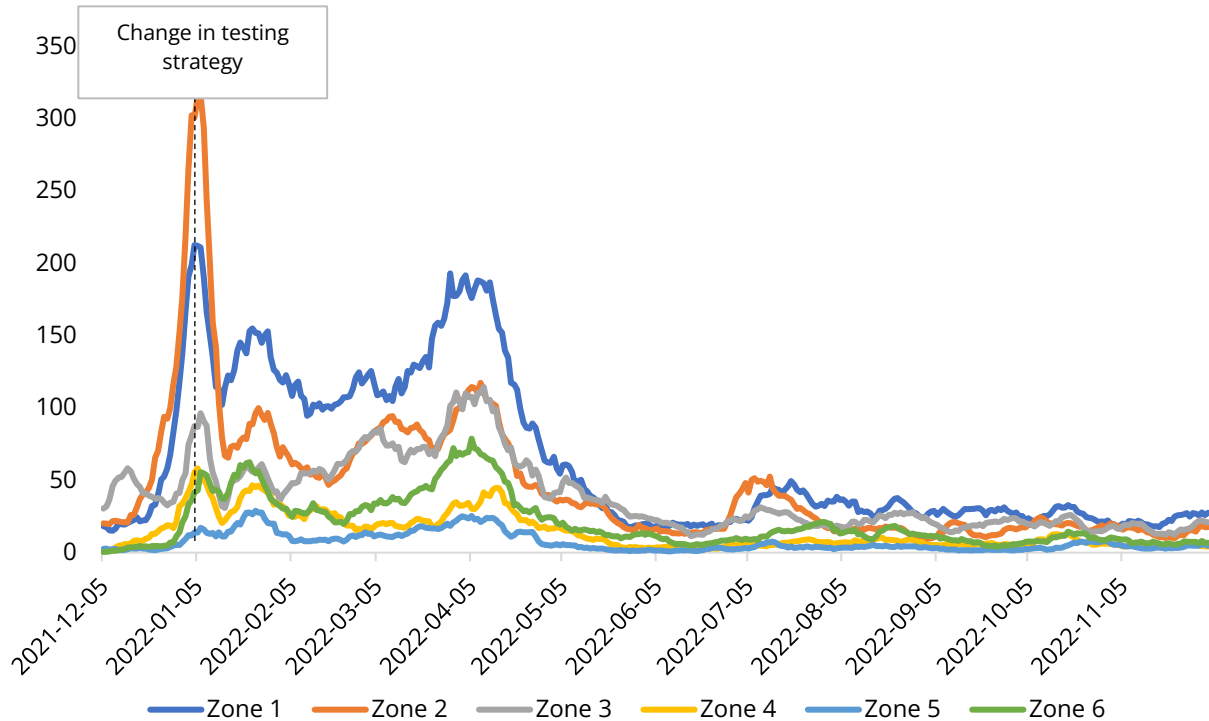
<sup>5</sup> Status as of 11:59pm on Saturday, December 3, 2022



**Figure 1:** Seven-day moving average of PCR confirmed COVID-19 cases by report date from December 5, 2021, to December 3, 2022.



**Figure 2:** Seven-day moving average of PCR confirmed COVID-19 cases by zone and report date from December 5, 2021, to December 3, 2022.



**Table 3:** Demographics of PCR confirmed COVID-19 cases in New Brunswick by reporting week, current and previous, and cumulative, up to December 3, 2022.

| Age range                       | Current Reporting Week |               | Previous Reporting Week |               | Cumulative          |               |
|---------------------------------|------------------------|---------------|-------------------------|---------------|---------------------|---------------|
|                                 | Number                 | Percent       | Number                  | Percent       | Number              | Percent       |
| < 10 years old                  | 27                     | 4.5%          | 16                      | 2.7%          | 4740                | 5.7%          |
| 10 - 19 years old               | 8                      | 1.3%          | 9                       | 1.5%          | 4405                | 5.3%          |
| 20 - 29 years old               | 63                     | 10.4%         | 50                      | 8.4%          | 11081               | 13.3%         |
| 30 - 39 years old               | 80                     | 13.2%         | 74                      | 12.4%         | 11967               | 14.3%         |
| 40 - 49 years old               | 91                     | 15.0%         | 76                      | 12.8%         | 11609               | 13.9%         |
| 50 - 59 years old               | 100                    | 16.5%         | 107                     | 18.0%         | 14438               | 17.3%         |
| 60 - 69 years old               | 84                     | 13.9%         | 96                      | 16.1%         | 10637               | 12.8%         |
| 70 - 79 years old               | 72                     | 11.9%         | 81                      | 13.6%         | 7207                | 8.6%          |
| 80 - 89 years old               | 54                     | 8.9%          | 67                      | 11.2%         | 5112                | 6.1%          |
| 90+ years old                   | 27                     | 4.5%          | 20                      | 3.4%          | 2229                | 2.7%          |
| <b>Total</b>                    | <b>606</b>             | <b>100.0%</b> | <b>596</b>              | <b>100.0%</b> | <b>83425</b>        | <b>100.0%</b> |
| Vaccination status <sup>6</sup> | Number                 | Percent       | Number                  | Percent       | Number <sup>7</sup> | Percent       |
| <b>Protected</b>                | 405                    | 66.8%         | 429                     | 72.0%         | 48953               | 65.6%         |
| <b>Unprotected</b>              | 201                    | 33.2%         | 167                     | 28.0%         | 25701               | 34.4%         |
| <b>Total</b>                    | <b>606</b>             | <b>100.0%</b> | <b>596</b>              | <b>100.0%</b> | <b>74654</b>        | <b>100.0%</b> |

<sup>6</sup>Protected refers to boosted or fully vaccinated less than six months. Unprotected refers to fully vaccinated more than six months, partially vaccinated, and unvaccinated. The protected definition does not include individuals with protection from a previous infection. The definitions of “protected” and “unprotected” are currently under review.

<sup>7</sup>Cases reported since December 5, 2021.

## COVID-19 HOSPITALIZATIONS<sup>8</sup> AND DEATH<sup>9</sup> SURVEILLANCE

**Table 4:** Hospitalizations for COVID-19 in New Brunswick, by age groups for reporting week, previous and current, and cumulative (Data up to December 3, 2022).

| Age range            | Total admissions<br>(non-ICU and ICU) |                               |             | ICU admissions               |                               |            | Resolved<br>or<br>discharg-<br>ed | Deceased <sup>10</sup> |
|----------------------|---------------------------------------|-------------------------------|-------------|------------------------------|-------------------------------|------------|-----------------------------------|------------------------|
|                      | Current<br>reporting<br>week          | Previous<br>reporting<br>week | Cumulative  | Current<br>reporting<br>week | Previous<br>reporting<br>week | Cumulative | Cumulative                        | Cumulative             |
| < 10<br>years old    | 0                                     | 2                             | 52          | 0                            | 0                             | 1          | 52                                | 0                      |
| 10 - 19<br>years old | 1                                     | 1                             | 21          | 0                            | 0                             | 2          | 19                                | 0                      |
| 20 - 29<br>years old | 1                                     | 2                             | 50          | 0                            | 1                             | 15         | 45                                | 3                      |
| 30 - 39<br>years old | 0                                     | 0                             | 60          | 0                            | 0                             | 13         | 55                                | 5                      |
| 40 - 49<br>years old | 1                                     | 1                             | 124         | 0                            | 0                             | 42         | 115                               | 14                     |
| 50 - 59<br>years old | 1                                     | 1                             | 224         | 0                            | 0                             | 65         | 209                               | 26                     |
| 60 - 69<br>years old | 7                                     | 4                             | 377         | 0                            | 0                             | 102        | 350                               | 57                     |
| 70 - 79<br>years old | 7                                     | 6                             | 527         | 0                            | 0                             | 111        | 455                               | 162                    |
| 80 - 89<br>years old | 9                                     | 7                             | 427         | 0                            | 2                             | 47         | 355                               | 199                    |
| 90+<br>years old     | 5                                     | 3                             | 173         | 0                            | 0                             | 10         | 125                               | 155                    |
| <b>Total</b>         | <b>32</b>                             | <b>27</b>                     | <b>2035</b> | <b>0</b>                     | <b>3</b>                      | <b>408</b> | <b>1780</b>                       | <b>621</b>             |

<sup>8</sup> Hospitalizations (including ICU admissions) are individuals that are hospitalized for COVID-19.

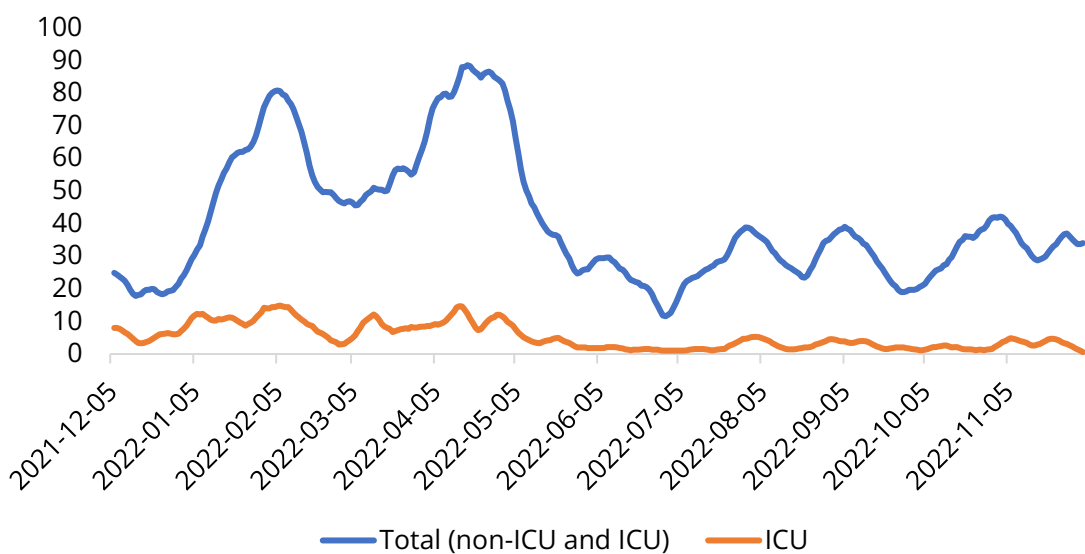
<sup>9</sup> Deaths are those where COVID-19 was a primary or contributing factor to cause of death as per the attending physician.

<sup>10</sup> Deceased cases reported within and outside of hospital.

**Table 5:** Vaccination status, proportion, and rate per 100,000 for hospitalized and deceased cases reported since December 5, 2021 (week 49).

| Vaccination status <sup>11</sup> | Hospitalizations (non-ICU and ICU) |               |                  | ICU        |               |                  | Deceased   |               |                  |
|----------------------------------|------------------------------------|---------------|------------------|------------|---------------|------------------|------------|---------------|------------------|
|                                  | N                                  | %             | Rate per 100,000 | N          | %             | Rate per 100,000 | N          | %             | Rate per 100,000 |
| Protected                        | 970                                | 55.6%         | 236.8            | 118        | 42.8%         | 28.8             | 297        | 62.8%         | 72.5             |
| Unprotected                      | 775                                | 44.4%         | 227.2            | 158        | 57.2%         | 46.3             | 176        | 37.2%         | 51.6             |
| <b>Total</b>                     | <b>1745</b>                        | <b>100.0%</b> | <b>232.4</b>     | <b>276</b> | <b>100.0%</b> | <b>36.8</b>      | <b>473</b> | <b>100.0%</b> | <b>63.0</b>      |

**Figure 3:** Seven-day moving average of hospitalizations for COVID-19 since December 5, 2021 (week 49).



<sup>11</sup>Protected refers to boosted or fully vaccinated less than six months. Unprotected refers to fully vaccinated more than six months, partially vaccinated, and unvaccinated. The protected definition does not include individuals with protection from a previous infection. The definitions of “protected” and “unprotected” are currently under review.



# National and International COVID-19 Activity

## **CANADA<sup>12</sup>**

- At the national level, case counts and outbreak incidence continue to stabilize or decrease, however, some provinces and territories are reporting increasing case counts.
  - Trends and indicators vary across provinces and territories.
- There has been a slight increase in COVID-19 hospitalizations. COVID-19 deaths continue to decrease.
- The previously leading BA.5 lineages are declining, while BQ.1, BQ.1.1 and BF.7 continue to demonstrate steady increases.

## **INTERNATIONAL**

- Maine is showing an uptick in case counts following a period of general decline; currently at a 174 7-day average.
- Global case counts are showing slight increases over the past few weeks. There were roughly 2.8 million cases last week.
  - Please note, case and death data for the Region of the Americas are incomplete.
  - Case counts in the regions of Europe, Americas, and Western Pacific have been slightly increasing over the last few weeks. The other regions continue to show stabilized or decreasing trends.
  - Japan and France have the two highest new case counts in the last 7 days, followed by Republic of Korea, United States, and Germany.
- Weekly counts of global deaths are showing a moderate decrease in recent weeks, following a period of stabilization since mid-September 2022.

---

<sup>12</sup> COVID-19 epidemiology update - Canada.ca