



COVID-19 Report

**REPORTING PERIOD:
AUGUST 21 TO AUGUST 27, 2022 (WEEK 34)**

August 30
Department of Health





SUMMARY

n = 712 New PCR confirmed cases ¹	n = 4 Deaths ¹	n = 73614 Cases are resolved	n = 1072 Cases are active ²
--	-------------------------------------	--	--

n = 33 Current hospitalizations ^{2,3} (non-ICU and ICU)	n = 4 Current ICU ^{2,3}	n = 32 Seven-day moving average (hospitalizations)	n = 102 Seven-day moving average (cases)
---	--	---	---

HIGHLIGHTS

- The number of PCR confirmed cases has decreased this week compared to last week.
- The number of hospital admissions for COVID-19 has increased (31) this week compared to last week (22).
- The number of active hospitalizations has increased this week (33) compared to last week (21).
- The number of deaths has decreased this week (4) compared to last week (6).
- The highest portion of hospitalizations for COVID-19 is among individuals aged 70-89.
- Individuals that are unprotected by vaccine continue to have the highest rate of hospitalization for COVID-19 and ICU admissions.
- Amongst the most recent random sample sequenced for COVID-19:
 - 0% of samples are BA.1.
 - 0% of samples are BA.2.
 - 0% of samples are BA.3.
 - 18% of samples are BA.4.
 - 82% of samples are BA.5.

¹ Reported during Sunday, August 21 to Saturday, August 27, 2022 (week 34).

² Status as of 11:59pm on Saturday, August 27, 2022.

³ Confirmed cases hospitalized for COVID-19.

COVID-19 LABORATORY DATA⁴

Table 1: The total number of PCR (polymerase chain reaction) and positive self-reported POCT (point of care) tests performed for COVID-19 by zone.

Zone	PCR Tests (Change)	Positive POCT (Change)
Zone 1	328934 (+1079)	24492 (+250)
Zone 2	157948 (+1054)	18148 (+79)
Zone 3	170834 (+1176)	18032 (+196)
Zone 4	83863 (+420)	4176 (+31)
Zone 5	46925 (+211)	1840 (+17)
Zone 6	68545 (+477)	6999 (+95)
Zone 7	41172 (+381)	3567 (+18)
Total	898221 (+4798)	77254 (+686)

Table 2: Total number of PCR confirmed COVID-19 cases.

Zone	Current reporting week	Cumulative confirmed	Number of resolved	Number of deceased	Number of active ⁵	Seven-day moving average
Zone 1	214	23462	23016	126	320	31
Zone 2	88	16813	16584	83	146	13
Zone 3	190	14228	13879	77	272	27
Zone 4	64	6116	5967	66	83	9
Zone 5	31	3009	2936	31	42	4
Zone 6	90	7079	6877	50	152	13
Zone 7	35	4445	4355	33	57	5
Total	712	75152	73614	466	1072	102

⁴ Source: George Dumont Laboratory extracts and self-reported POCT database

⁵ Status as of 11:59pm on Saturday, August 27, 2022



Figure 1: Seven-day moving average of PCR confirmed COVID-19 cases by report date from December 5, 2021 to August 27, 2022.

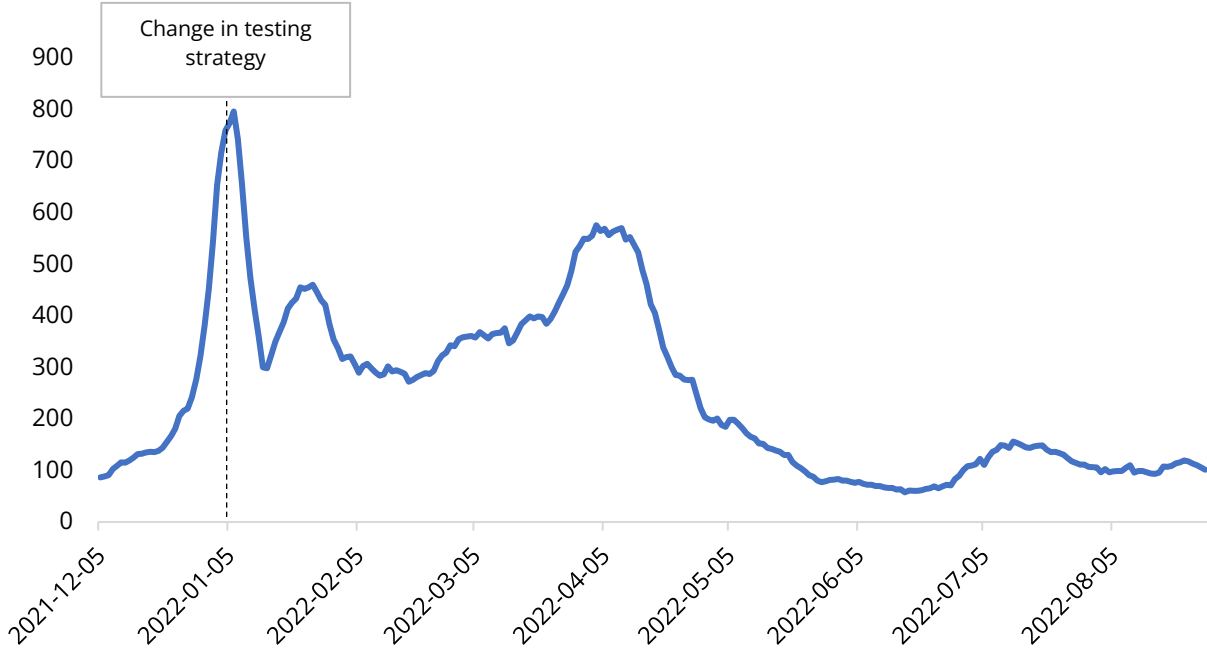


Figure 2: Seven-day moving average of PCR confirmed COVID-19 cases by zone and report date from December 5, 2021 to August 27, 2022.

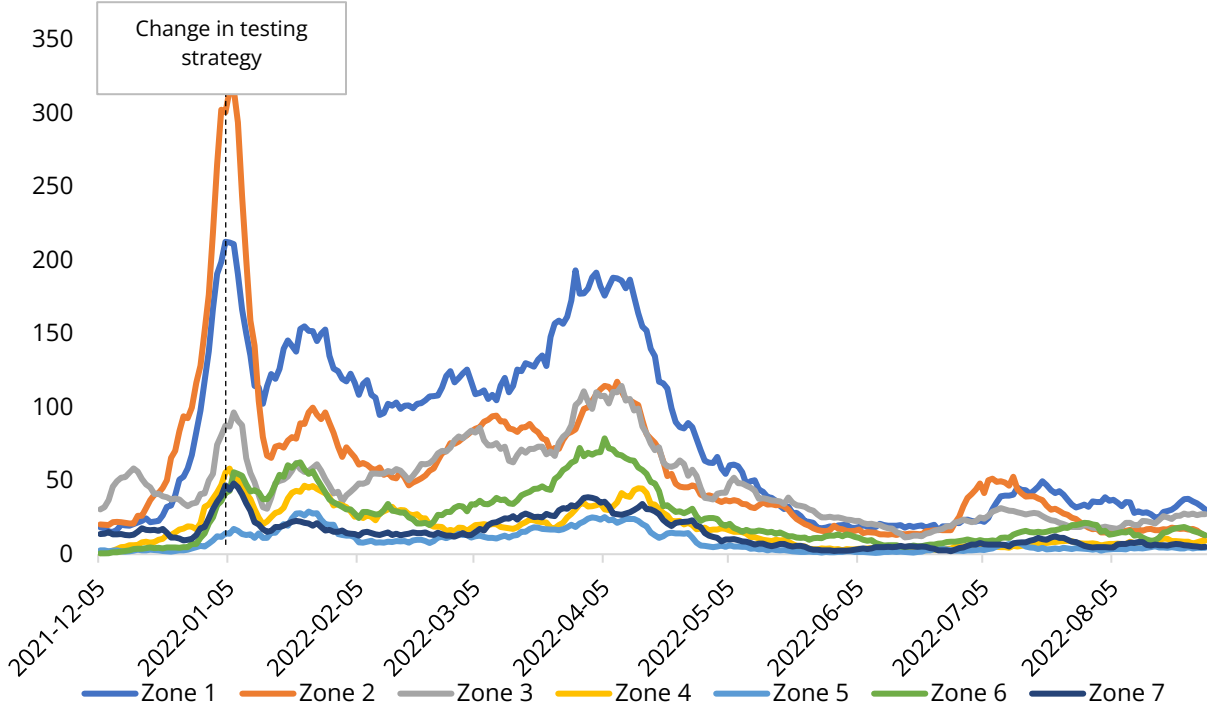


Table 3: Demographics of PCR confirmed COVID-19 cases in New Brunswick by reporting week, current and previous, and cumulative, up to August 27, 2022.

Age range	Current Reporting Week		Previous Reporting Week		Cumulative	
	Number	Percent	Number	Percent	Number	Percent
< 10 years old	29	4.1%	14	1.8%	4532	6.0%
10 - 19 years old	16	2.2%	15	1.9%	4301	5.7%
20 - 29 years old	98	13.8%	96	12.0%	10309	13.7%
30 - 39 years old	96	13.5%	87	10.9%	10933	14.5%
40 - 49 years old	81	11.4%	109	13.7%	10530	14.0%
50 - 59 years old	121	17.0%	172	21.6%	12922	17.2%
60 - 69 years old	125	17.6%	123	15.4%	9406	12.5%
70 - 79 years old	78	11.0%	97	12.2%	6078	8.1%
80 - 89 years old	46	6.5%	65	8.2%	4280	5.7%
90+ years old	22	3.1%	19	2.4%	1861	2.5%
Total	712	100.0%	797	100.0%	75152	100.0%
Vaccination status ⁶	Number	Percent	Number	Percent	Number ⁷	Percent
Protected	477	67.0%	586	73.5%	43046	64.8%
Unprotected	235	33.0%	211	26.5%	23335	35.2%
Total	712	100.0%	797	100.0%	66381	100.0%

⁶Protected refers to boosted or fully vaccinated less than six months. Unprotected refers to fully vaccinated more than six months, partially vaccinated, and unvaccinated. The protected definition does not include individuals with protection from a previous infection. The definitions of “protected” and “unprotected” are currently under review.

⁷Cases reported since December 5, 2021.

COVID-19 HOSPITALIZATIONS⁸ AND DEATH⁹ SURVEILLANCE

Table 4: Hospitalizations for COVID-19 in New Brunswick, by age groups for reporting week, previous and current, and cumulative (Data up to August 27, 2022).

Age range	Total admissions (non-ICU and ICU)			ICU admissions			Resolved or discharg- ed	Deceased ¹⁰
	Current reporting week	Previous reporting week	Cumulative	Current reporting week	Previous reporting week	Cumulative	Cumulative	Cumulative
< 10 years old	1	1	43	0	0	1	43	0
10 - 19 years old	1	0	15	0	0	1	15	0
20 - 29 years old	0	1	43	0	0	12	41	2
30 - 39 years old	0	1	48	0	1	12	43	4
40 - 49 years old	0	1	113	0	0	41	105	15
50 - 59 years old	1	3	198	1	0	62	185	20
60 - 69 years old	8	2	314	2	1	95	288	49
70 - 79 years old	8	5	419	1	0	100	352	130
80 - 89 years old	9	5	335	0	0	41	275	151
90+ years old	3	3	140	0	0	9	98	95
Total	31	22	1668	4	2	374	1445	466

⁸ Hospitalizations (including ICU admissions) are individuals that are hospitalized for COVID-19.

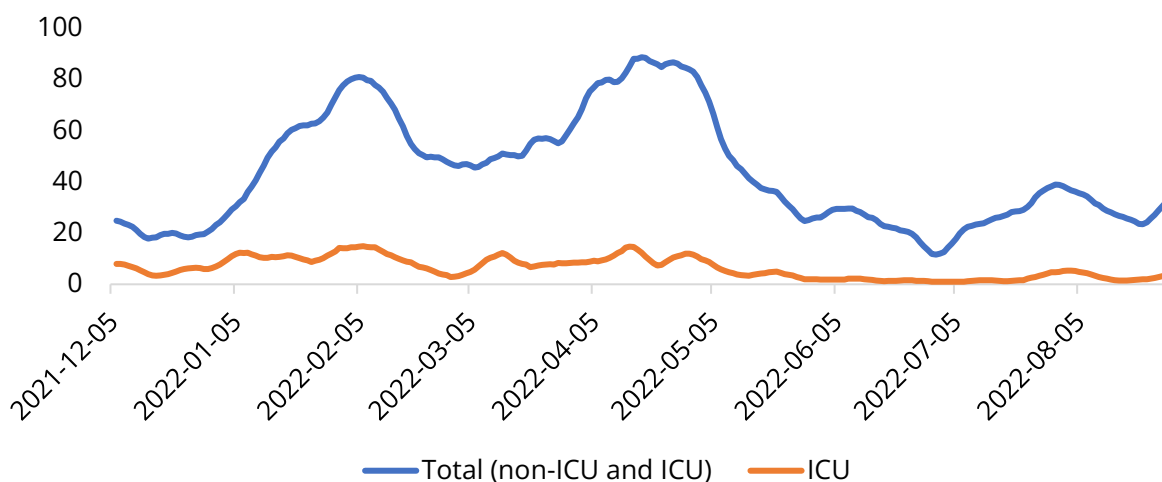
⁹ Deaths are those where COVID-19 was a primary or contributing factor to cause of death as per the attending physician.

¹⁰ Deceased cases reported within and outside of hospital.

Table 5: Vaccination status, proportion, and rate per 100,000 for hospitalized and deceased cases reported since December 5, 2021 (week 49).

Vaccination status ¹¹	Hospitalizations (non-ICU and ICU)			ICU			Deceased		
	N	%	Rate per 100,000	N	%	Rate per 100,000	N	%	Rate per 100,000
Protected	732	53.1%	179.5	98	40.5%	24.0	183	57.5%	44.9
Unprotected	646	46.9%	188.4	144	59.5%	42.0	135	42.5%	39.4
Total	1378	100.0%	183.6	242	100.0%	32.2	318	100.0%	42.4

Figure 3: Seven-day moving average of hospitalizations for COVID-19 since December 5, 2021 (week 49).



¹¹Protected refers to boosted or fully vaccinated less than six months. Unprotected refers to fully vaccinated more than six months, partially vaccinated, and unvaccinated. The protected definition does not include individuals with protection from a previous infection. The definitions of “protected” and “unprotected” are currently under review.



National and International COVID-19 Activity

CANADA

- National data are showing a continued slight decrease since previous weeks; but individual provinces and territories are showing a variety of trends including increasing, decreasing, or stable trends. Data are delayed for some provinces and territories.
- The most recent data are showing deaths have remained relatively stable compared to last week and are potentially reaching a plateau.

INTERNATIONAL

- Maine cases have slightly increased since last week; currently at a 243 7-day average.
- Global case counts have decreased since last week and continue to demonstrate a downward trend. There were roughly 5.4 million cases last week.
 - Please note, case and death data for the Regions of the Americas and Africa are incomplete and will be updated as data is collected.
 - All regions continue to show decreasing case counts, including a small decrease in Western Pacific. Data are incomplete and may change as additional cases are reported.
 - Japan and the Republic of Korea have the two highest new case counts in the last 7 days, followed by the United States, Russia, and Germany.
- Global deaths have slightly decreased since last week, continuing a minor downward trend.
- Over 200 countries have reported Omicron cases.
 - Both BA.4 and BA.5 sub-variants have been detected in Canada.