



---

# COVID-19 Report

**REPORTING PERIOD:  
AUGUST 14 TO AUGUST 20, 2022 (WEEK 33)**

**August 23**  
Department of Health





## SUMMARY

<b>n = 797</b> New PCR confirmed cases <sup>1</sup>	<b>n = 6</b> Deaths <sup>1</sup>	<b>n = 72868</b> Cases are resolved	<b>n = 1110</b> Cases are active <sup>2</sup>
--	-------------------------------------	--	--

<b>n = 21</b> Current hospitalizations <sup>2,3</sup> (non-ICU and ICU)	<b>n = 1</b> Current ICU <sup>2,3</sup>	<b>n = 24</b> Seven-day moving average (hospitalizations)	<b>n = 114</b> Seven-day moving average (cases)
---	--	---	---

## HIGHLIGHTS

- The number of PCR confirmed cases has increased this week following a four-week decreasing trend.
- The number of hospital admissions for COVID-19 this week is the same as the previous week (22).
- The number of active hospitalizations has decreased this week (21) compared to last week (27).
- The number of deaths slightly increased this week (6) compared to last week (5).
- The highest portion of hospitalizations for COVID-19 is among individuals aged 70-89.
- Individuals that are unprotected by vaccine continue to have the highest rate of hospitalization for COVID-19 and ICU admissions.
- Amongst the most recent random sample sequenced for COVID-19:
  - 0% of samples are BA.1.
  - 1% of samples are BA.2.
  - 0% of samples are BA.3.
  - 5% of samples are BA.4.
  - 94% of samples are BA.5.

---

<sup>1</sup> Reported during Sunday, August 14 to Saturday, August 20, 2022 (week 33).

<sup>2</sup> Status as of 11:59pm on Saturday, August 20, 2022.

<sup>3</sup> Confirmed cases hospitalized for COVID-19.

## COVID-19 LABORATORY DATA<sup>4</sup>

**Table 1:** The total number of PCR (polymerase chain reaction) and positive self-reported POCT (point of care) tests performed for COVID-19 by zone.

Zone	PCR Tests (Change)	Positive POCT (Change)
Zone 1	327855 (+1083)	24242 (+265)
Zone 2	156894 (+1269)	18069 (+94)
Zone 3	169658 (+1244)	17836 (+169)
Zone 4	83443 (+398)	4145 (+31)
Zone 5	46714 (+182)	1823 (+19)
Zone 6	68068 (+422)	6904 (+120)
Zone 7	40791 (+461)	3549 (+18)
<b>Total</b>	<b>893423 (+5059)</b>	<b>76568 (+716)</b>

**Table 2:** Total number of PCR confirmed COVID-19 cases.

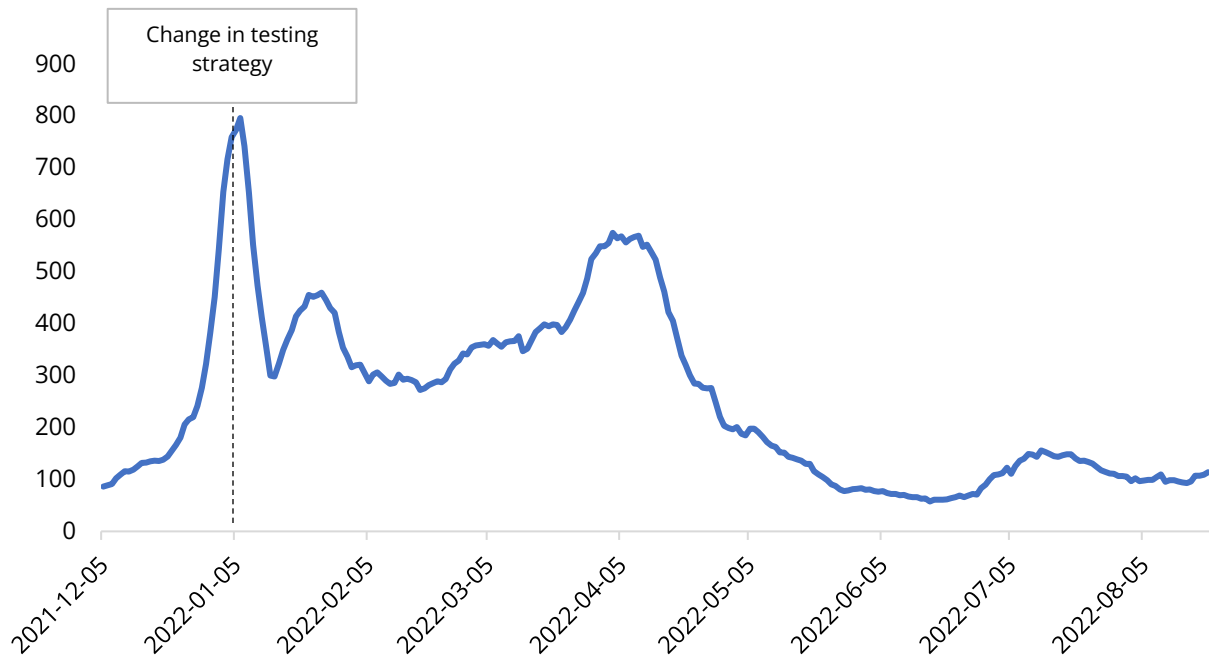
Zone	Current reporting week	Cumulative confirmed	Number of resolved	Number of deceased	Number of active <sup>5</sup>	Seven-day moving average
Zone 1	225	23248	22815	125	308	32
Zone 2	124	16725	16468	82	175	18
Zone 3	183	14038	13699	76	263	26
Zone 4	63	6052	5894	65	93	9
Zone 5	30	2978	2904	31	43	4
Zone 6	124	6989	6776	50	163	18
Zone 7	48	4410	4312	33	65	7
<b>Total</b>	<b>797</b>	<b>74440</b>	<b>72868</b>	<b>462</b>	<b>1110</b>	<b>114</b>

<sup>4</sup> Source: George Dumont Laboratory extracts and self-reported POCT database

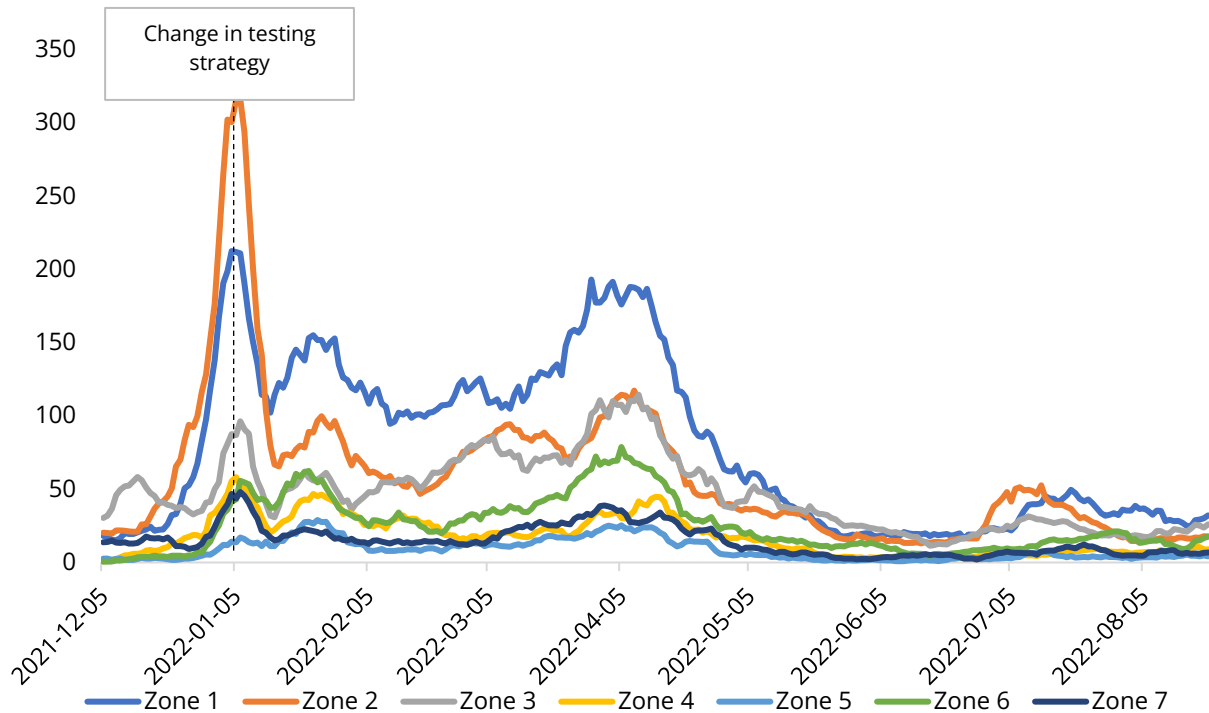
<sup>5</sup> Status as of 11:59pm on Saturday, August 20, 2022



**Figure 1:** Seven-day moving average of PCR confirmed COVID-19 cases by report date from December 5, 2021 to August 20, 2022.



**Figure 2:** Seven-day moving average of PCR confirmed COVID-19 cases by zone and report date from December 5, 2021 to August 20, 2022.



**Table 3:** Demographics of PCR confirmed COVID-19 cases in New Brunswick by reporting week, current and previous, and cumulative, up to August 20, 2022.

Age range	Current Reporting Week		Previous Reporting Week		Cumulative	
	Number	Percent	Number	Percent	Number	Percent
< 10 years old	14	1.8%	20	3.0%	4503	6.0%
10 - 19 years old	15	1.9%	12	1.8%	4285	5.8%
20 - 29 years old	96	12.0%	77	11.4%	10211	13.7%
30 - 39 years old	87	10.9%	100	14.8%	10837	14.6%
40 - 49 years old	109	13.7%	63	9.3%	10449	14.0%
50 - 59 years old	172	21.6%	106	15.7%	12801	17.2%
60 - 69 years old	123	15.4%	120	17.8%	9281	12.5%
70 - 79 years old	97	12.2%	79	11.7%	6000	8.1%
80 - 89 years old	65	8.2%	70	10.4%	4234	5.7%
90+ years old	19	2.4%	28	4.1%	1839	2.5%
<b>Total</b>	<b>797</b>	<b>100.0%</b>	<b>675</b>	<b>100.0%</b>	<b>74440</b>	<b>100.0%</b>
Vaccination status <sup>6</sup>	Number	Percent	Number	Percent	Number <sup>7</sup>	Percent
<b>Protected</b>	586	73.5%	458	67.9%	42569	64.8%
<b>Unprotected</b>	211	26.5%	217	32.1%	23100	35.2%
<b>Total</b>	<b>797</b>	<b>100.0%</b>	<b>675</b>	<b>100.0%</b>	<b>65669</b>	<b>100.0%</b>

<sup>6</sup>Protected refers to boosted or fully vaccinated less than six months. Unprotected refers to fully vaccinated more than six months, partially vaccinated, and unvaccinated. The protected definition does not include individuals with protection from a previous infection. The definitions of “protected” and “unprotected” are currently under review.

<sup>7</sup>Cases reported since December 5, 2021.

## COVID-19 HOSPITALIZATIONS<sup>8</sup> AND DEATH<sup>9</sup> SURVEILLANCE

**Table 4:** Hospitalizations for COVID-19 in New Brunswick, by age groups for reporting week, previous and current, and cumulative (Data up to August 20, 2022).

Age range	Total admissions (non-ICU and ICU)			ICU admissions			Resolved or discharg- ed	Deceased <sup>10</sup>
	Current reporting week	Previous reporting week	Cumulative	Current reporting week	Previous reporting week	Cumulative	Cumulative	Cumulative
< 10 years old	1	0	42	0	0	1	42	0
10 - 19 years old	0	0	14	0	0	1	14	0
20 - 29 years old	1	1	43	0	0	12	41	2
30 - 39 years old	1	0	48	1	0	12	43	4
40 - 49 years old	1	0	113	0	0	41	105	15
50 - 59 years old	3	3	197	0	0	61	185	20
60 - 69 years old	2	4	306	1	0	93	282	48
70 - 79 years old	5	8	411	0	1	99	349	129
80 - 89 years old	5	5	326	0	1	41	268	150
90+ years old	3	1	137	0	0	9	97	94
<b>Total</b>	<b>22</b>	<b>22</b>	<b>1637</b>	<b>2</b>	<b>2</b>	<b>370</b>	<b>1426</b>	<b>462</b>

<sup>8</sup> Hospitalizations (including ICU admissions) are individuals that are hospitalized for COVID-19.

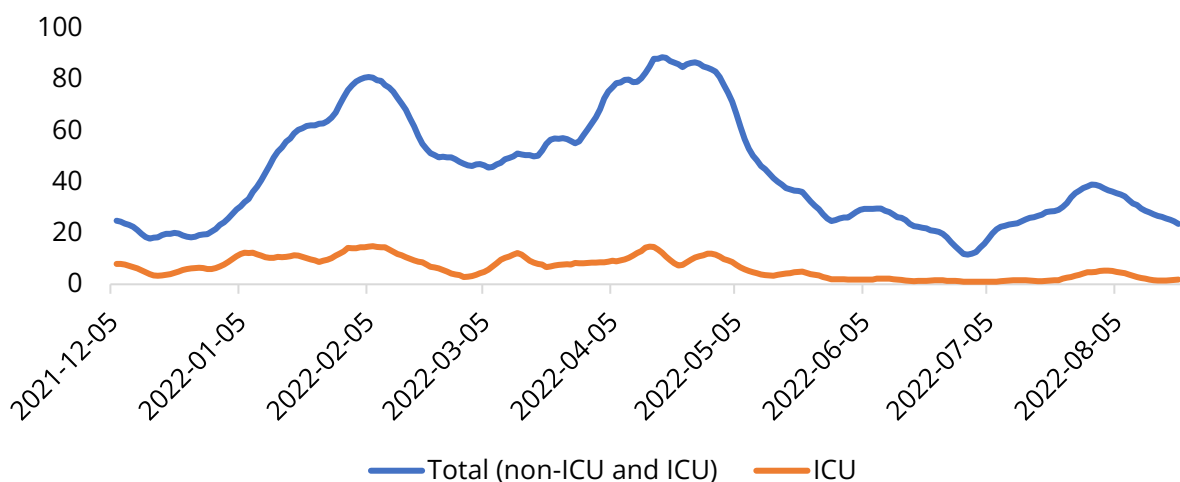
<sup>9</sup> Deaths are those where COVID-19 was a primary or contributing factor to cause of death as per the attending physician.

<sup>10</sup> Deceased cases reported within and outside of hospital.

**Table 5:** Vaccination status, proportion, and rate per 100,000 for hospitalized and deceased cases reported since December 5, 2021 (week 49).

Vaccination status <sup>11</sup>	Hospitalizations (non-ICU and ICU)			ICU			Deceased		
	N	%	Rate per 100,000	N	%	Rate per 100,000	N	%	Rate per 100,000
Protected	713	52.9%	174.2	96	40.3%	23.4	181	57.6%	44.2
Unprotected	634	47.1%	185.8	142	59.7%	41.6	133	42.4%	39.0
<b>Total</b>	<b>1347</b>	<b>100.0%</b>	<b>179.4</b>	<b>238</b>	<b>100.0%</b>	<b>31.7</b>	<b>314</b>	<b>100.0%</b>	<b>41.8</b>

**Figure 3:** Seven-day moving average of hospitalizations for COVID-19 since December 5, 2021 (week 49).



<sup>11</sup>Protected refers to boosted or fully vaccinated less than six months. Unprotected refers to fully vaccinated more than six months, partially vaccinated, and unvaccinated. The protected definition does not include individuals with protection from a previous infection. The definitions of “protected” and “unprotected” are currently under review.



# National and International COVID-19 Activity

## **CANADA**

- National data are showing an overall slight decrease since previous weeks; but individual provinces and territories are showing a variety of trends including increasing, decreasing, or stable trends. Data are delayed for some provinces and territories.
- The most recent data is showing deaths continue to increase.

## **INTERNATIONAL**

- Maine cases have remained relatively stable over the past month; currently at a 212 7-day average.
- Global case counts have decreased since last week and continue to show a downward trend. There were roughly 5.0 million cases last week.
  - Please note, case and death data for the Regions of the Americas and Africa are incomplete and will be updated as data is collected.
  - All regions continue to show decreasing case counts, except Western Pacific which is displaying a slight increase from last week. Data are incomplete and may change as additional cases are reported.
  - Japan and the Republic of Korea have the two highest new case counts in the last 7 days, followed by the United States, Russia and Germany.
- Global deaths have slightly decreased since last week.
- Over 200 countries have reported Omicron cases.
  - Both BA.4 and BA.5 sub-variants have been detected in Canada.