



COVID-19 Report

**REPORTING PERIOD:
APRIL 3 TO APRIL 9, 2022 (WEEK 14)**

April 12
Department of Health





SUMMARY

n = 3962 New PCR confirmed cases ¹	n = 10 Deaths ¹	n = 49723 Cases are resolved	n = 5721 Cases are active ²
---	--------------------------------------	--	--

n = 79 Current hospitalizations ^{2,3} (non-ICU and ICU)	n = 13 Current ICU ^{2,3}	n = 78 Seven-day moving average (hospitalizations)	n = 570 Seven-day moving average (cases)
---	---	---	---

HIGHLIGHTS

- The number of PCR confirmed cases and has continued to increase over the past three weeks.
- There was a decrease in the number of hospital admissions for COVID-19 this week (41) compared to last week (78).
- The number of deaths has increased this week (10) compared to last week (9).
- The highest portion of hospitalizations for COVID-19 is among individuals aged 60-79.
- Individuals that are unprotected by vaccine continue to have the highest rate of hospitalization for COVID-19 and death.

¹ Reported during Sunday, April 3 to Saturday, April 9, 2022 (week 14).

² Status as of 11:59pm on Saturday, April 9, 2022.

³ Confirmed cases hospitalized for COVID-19.

COVID-19 LABORATORY DATA⁴

Table 1: The total number of PCR (polymerase chain reaction) and positive self-reported POCT (point of care) tests performed for COVID-19 by zone.

Zone	PCR Tests (Change)	Positive POCT (Change)
Zone 1	293294 (+4939)	18810 (+1304)
Zone 2	135345 (+1865)	13609 (+796)
Zone 3	146674 (+1750)	12922 (+858)
Zone 4	78585 (+540)	3476 (+141)
Zone 5	43303 (+377)	1526 (+86)
Zone 6	60344 (+963)	5280 (+390)
Zone 7	35939 (+454)	2808 (+197)
Total	793484 (+10888)	58431 (+3772)

Table 2: Total number of PCR confirmed COVID-19 cases.

Zone	Current reporting week	Cumulative confirmed	Number of resolved	Number of deceased	Number of active ⁵	Seven-day moving average
Zone 1	1301	17751	15766	100	1885	186
Zone 2	768	12783	11569	61	1153	111
Zone 3	798	9980	8848	58	1074	115
Zone 4	281	4804	4374	59	371	42
Zone 5	158	2376	2098	25	253	23
Zone 6	469	4849	4129	38	682	67
Zone 7	187	3269	2939	27	303	27
Total	3962	55812	49723	368	5721	570

⁴ Source: George Dumont Laboratory extracts and self-reported POCT database

⁵ Status as of 11:59pm on Saturday, April 9, 2022



Figure 1: Seven-day moving average of PCR confirmed COVID-19 cases by report date from December 5, 2021 to April 9, 2022.

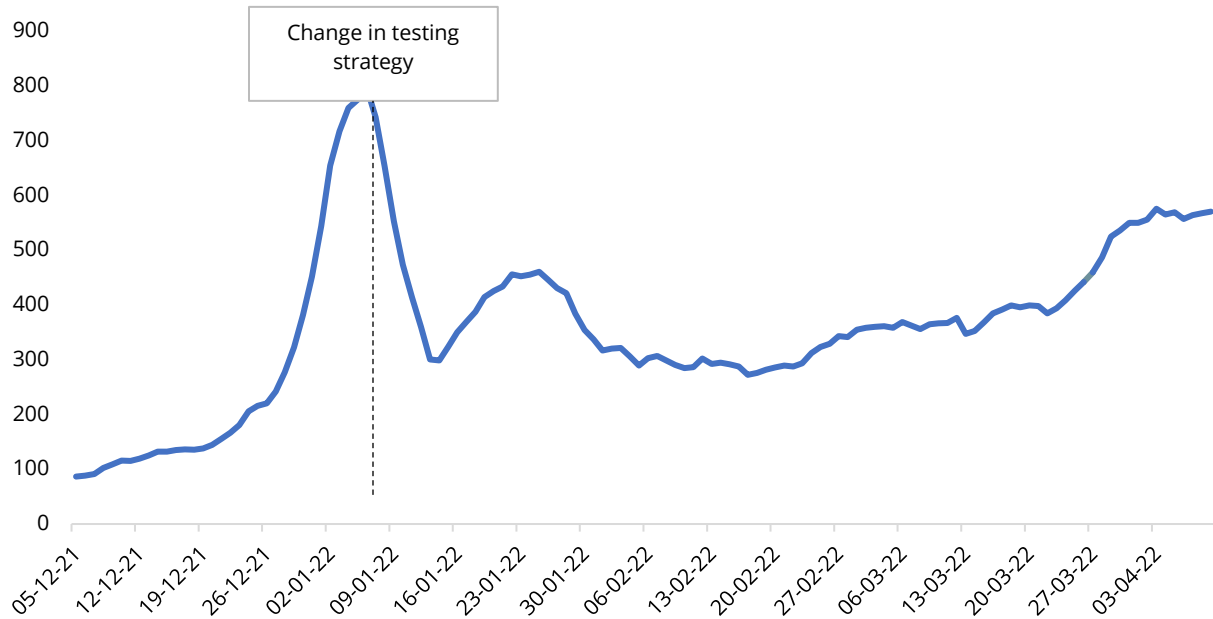


Figure 2: Seven-day moving average of PCR confirmed COVID-19 cases by zone and report date from December 5, 2021 to April 9, 2022.

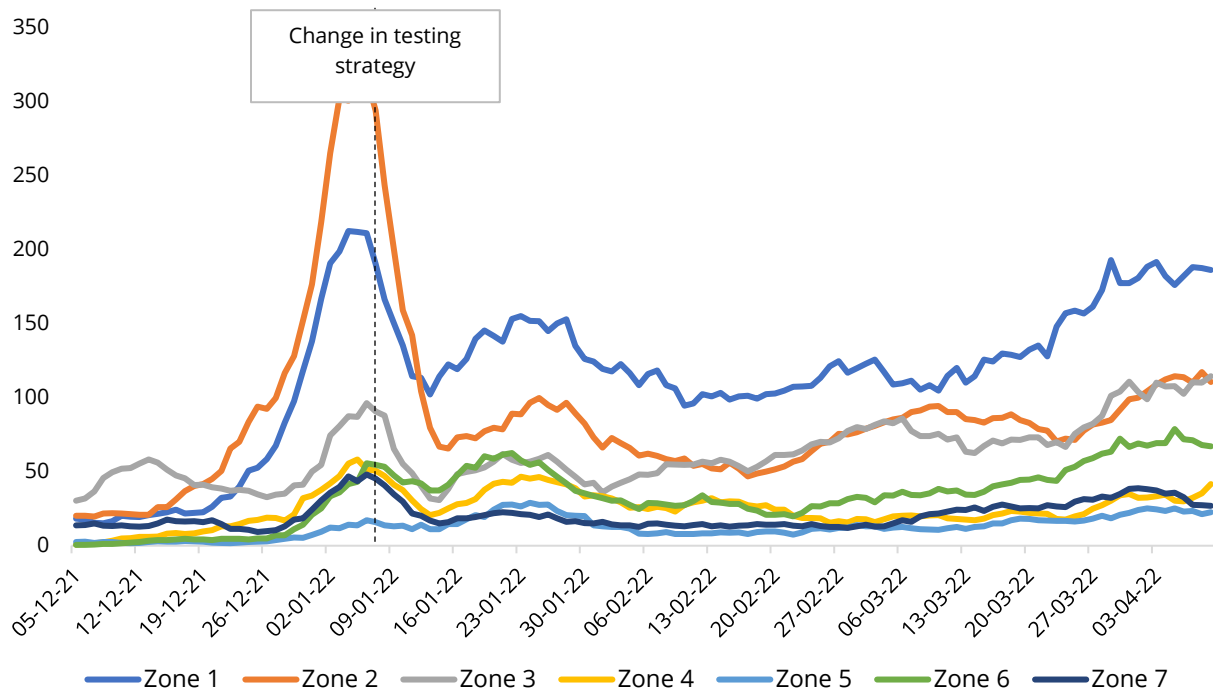


Table 3: Demographics of PCR confirmed COVID-19 cases in New Brunswick by reporting week, current and previous, and cumulative, up to April 9, 2022.

Age range	Current Reporting Week		Previous Reporting Week		Cumulative	
	Number	Percent	Number	Percent	Number	Percent
< 10 years old	124	3.1%	124	3.2%	4046	7.2%
10 - 19 years old	95	2.4%	135	3.5%	4012	7.2%
20 - 29 years old	393	9.9%	447	11.5%	8296	14.9%
30 - 39 years old	541	13.7%	592	15.2%	8688	15.6%
40 - 49 years old	591	14.9%	641	16.5%	8112	14.5%
50 - 59 years old	785	19.8%	778	20.0%	9001	16.1%
60 - 69 years old	592	14.9%	492	12.7%	6166	11.0%
70 - 79 years old	410	10.3%	331	8.5%	3672	6.6%
80 - 89 years old	305	7.7%	225	5.8%	2587	4.7%
90+ years old	126	3.2%	123	3.2%	1232	2.2%
Total	3962	100.0%	3888	100.0%	55812	100.0%
Vaccination status ⁶	Number	Percent	Number	Percent	Number ⁷	Percent
Protected	2948	74.4%	2789	71.7%	28743	61.1%
Unprotected	1014	25.6%	1099	28.3%	18302	38.9%
Total	3962	100.0%	3888	100.0%	47045	100.0%

⁶Protected refers to boosted or fully vaccinated less than six months. Unprotected refers to fully vaccinated more than six months, partially vaccinated, and unvaccinated.

⁷Cases reported since December 5, 2021.

COVID-19 HOSPITALIZATIONS⁸ AND DEATH⁹ SURVEILLANCE

Table 4: Hospitalizations for COVID-19 in New Brunswick, by age groups for reporting week, previous and current, and cumulative (Data up to April 9, 2022).

Age range	Total admissions (non-ICU and ICU)			ICU admissions			Resolved or discharg- ed	Deceased ¹⁰
	Current reporting week	Previous reporting week	Cumulative	Current reporting week	Previous reporting week	Cumulative	Cumulative	Cumulative
< 10 years old	1	2	22	0	0	1	21	0
10 - 19 years old	0	0	10	0	0	1	10	0
20 - 29 years old	1	1	30	0	1	12	26	2
30 - 39 years old	1	3	38	0	1	10	32	3
40 - 49 years old	5	5	85	0	1	34	73	15
50 - 59 years old	4	8	133	3	1	48	117	19
60 - 69 years old	6	13	192	1	0	68	162	40
70 - 79 years old	8	17	247	3	3	76	182	104
80 - 89 years old	13	21	186	1	1	27	121	114
90+ years old	2	8	79	0	0	7	40	71
Total	41	78	1022	8	8	284	784	368

⁸ Hospitalizations (including ICU admissions) are individuals that are hospitalized for COVID-19.

⁹ Deaths are those where COVID-19 was a primary or contributing factor to cause of death as per the attending physician.

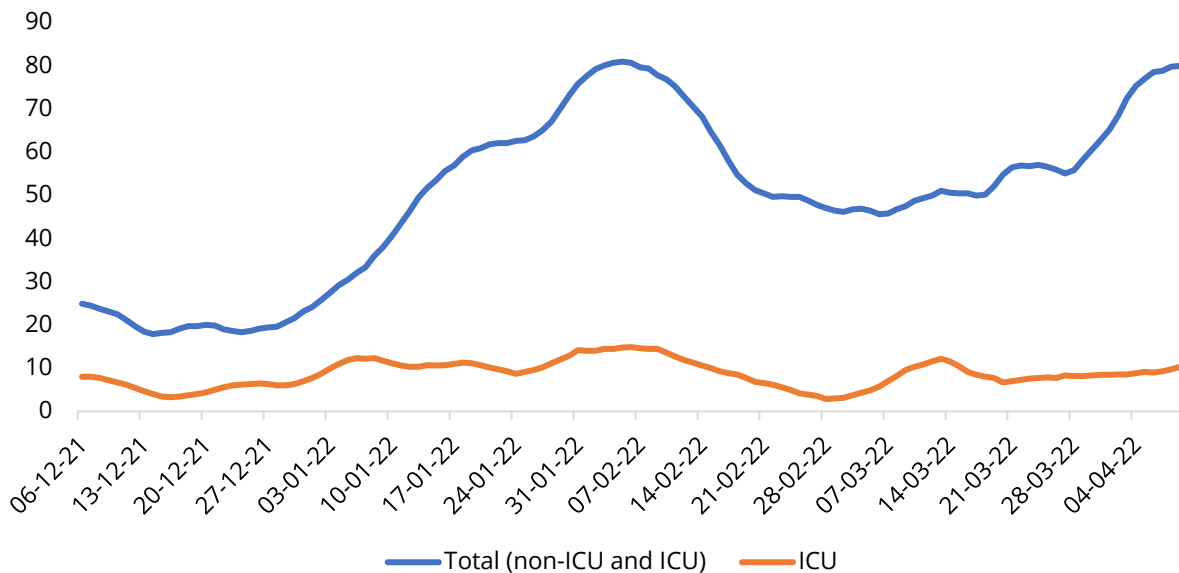
¹⁰ Deceased cases reported within and outside of hospital.



Table 5: Vaccination status, proportion, and rate per 100,000 for hospitalized and deceased cases reported since December 5, 2021 (week 49).

Vaccination status ¹¹	Hospitalizations (non-ICU and ICU)			ICU			Deceased		
	N	%	Rate per 100,000	N	%	Rate per 100,000	N	%	Rate per 100,000
Protected	349	45.8%	74.3	55	35.7%	11.7	113	51.4%	24.1
Unprotected	413	54.2%	146.9	99	64.3%	35.2	107	48.6%	38.1
Total	762	100.0%	101.5	154	100.0%	20.5	220	100.0%	29.3

Figure 3: Seven-day moving average of hospitalizations for COVID-19 since December 5, 2021 (week 49).



¹¹Protected refers to boosted or fully vaccinated less than six months. Unprotected refers to fully vaccinated more than six months, partially vaccinated, and unvaccinated.



National and International COVID-19 Activity

CANADA

- National data indicates a slight upward trend over the last few weeks, largely driven by Ontario and Quebec.
- Trends vary across the country, with some increasing, remaining stable, and fewer are decreasing.
 - Slight increase: Alberta, Ontario, Quebec, Prince Edward Island, Nova Scotia and Yukon.
 - Stable or decreasing: British Columbia, Saskatchewan, Manitoba, Newfoundland and Labrador, Northwest Territories and Nunavut.
- Deaths have remained stable since last month and are similar to levels in October 2021.

INTERNATIONAL

- COVID-19 cases in Maine continue to remain low.
 - Currently with a 7-day average of 208 cases.
- Global numbers indicate a downward trend, with roughly 7.2 million cases over the last week.
- Global deaths also continue to decline and are roughly 22,000 deaths/week – lower than late March 2020.
 - All global regions are showing a decline in case counts
 - Republic of Korea and Germany have the two highest new case counts in the last 7 days, followed by France, Italy and Australia.
 - Some of the countries with the highest rates are clustered throughout Europe.