



COVID-19 Report

**REPORTING PERIOD:
APRIL 10 TO APRIL 16, 2022 (WEEK 15)**



SUMMARY

n = 2956 New PCR confirmed cases ¹	n = 10 Deaths ¹	n = 53601 Cases are resolved	n = 4789 Cases are active ²
---	--------------------------------------	--	--

n = 79 Current hospitalizations ^{2,3} (non-ICU and ICU)	n = 6 Current ICU ^{2,3}	n = 88 Seven-day moving average (hospitalizations)	n = 422 Seven-day moving average (cases)
---	--	---	---

HIGHLIGHTS

- The number of PCR confirmed cases has decreased this week compared to last week.
- There was an increase in the number of hospital admissions for COVID-19 this week (102) compared to last week (41).
- The number of active hospitalizations has remained stable this week compared to last week (79).
- The number of deaths has remained stable compared to last week (10).
- The highest portion of hospitalizations for COVID-19 is among individuals aged 60-79.
- Individuals that are unprotected by vaccine continue to have the highest rate of hospitalization for COVID-19 and death.

¹ Reported during Sunday, April 10 to Saturday, April 16, 2022 (week 15).

² Status as of 11:59pm on Saturday, April 16, 2022.

³ Confirmed cases hospitalized for COVID-19.

COVID-19 LABORATORY DATA⁴

Table 1: The total number of PCR (polymerase chain reaction) and positive self-reported POCT (point of care) tests performed for COVID-19 by zone.

Zone	PCR Tests (Change)	Positive POCT (Change)
Zone 1	297152 (+3858)	19712 (+902)
Zone 2	136896 (+1551)	14166 (+557)
Zone 3	148226 (+1552)	13595 (+673)
Zone 4	79091 (+506)	3597 (+121)
Zone 5	43624 (+321)	1574 (+48)
Zone 6	61055 (+711)	5500 (+220)
Zone 7	36258 (+319)	2976 (+168)
Total	802302 (+8818)	61120 (+2689)

Table 2: Total number of PCR confirmed COVID-19 cases.

Zone	Current reporting week	Cumulative confirmed	Number of resolved	Number of deceased	Number of active ⁵	Seven-day moving average
Zone 1	979	18730	17039	102	1589	140
Zone 2	551	13334	12360	63	911	79
Zone 3	527	10507	9565	58	884	75
Zone 4	239	5043	4583	60	400	34
Zone 5	103	2479	2259	25	195	15
Zone 6	344	5193	4629	42	522	49
Zone 7	213	3482	3166	28	288	30
Total	2956	58768	53601	378	4789	422

Figure 1: Seven-day moving average of PCR confirmed COVID-19 cases by report date from December 5, 2021 to April 16, 2022.

⁴ Source: George Dumont Laboratory extracts and self-reported POCT database

⁵ Status as of 11:59pm on Saturday, April 16, 2022

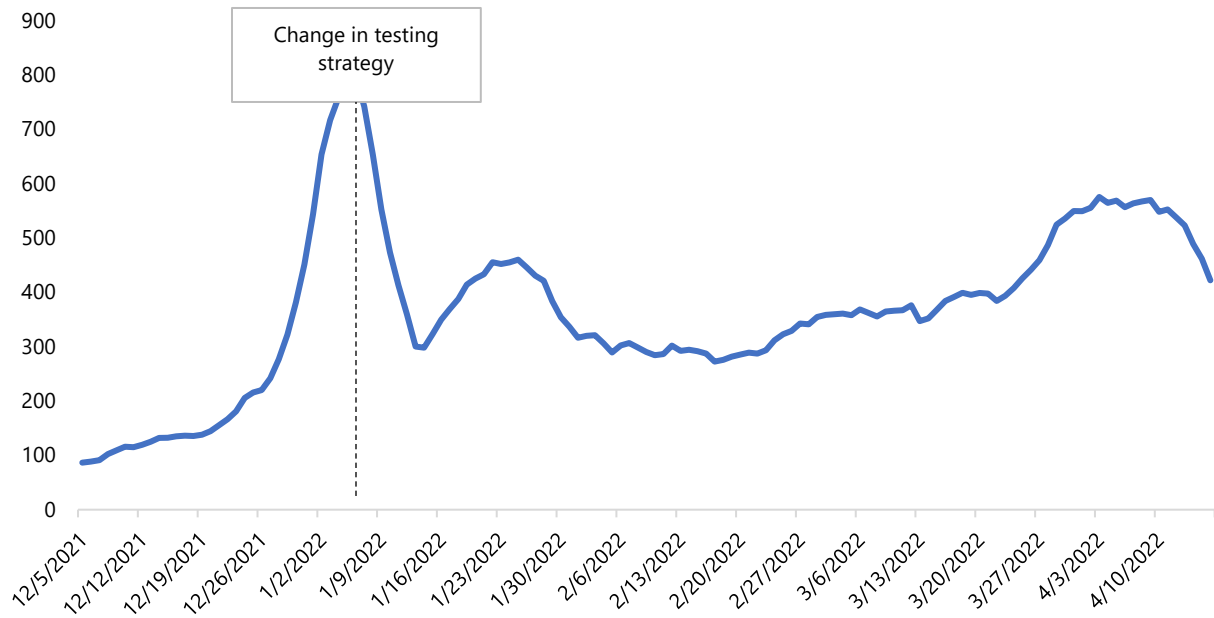


Figure 2: Seven-day moving average of PCR confirmed COVID-19 cases by zone and report date from December 5, 2021 to April 16, 2022.

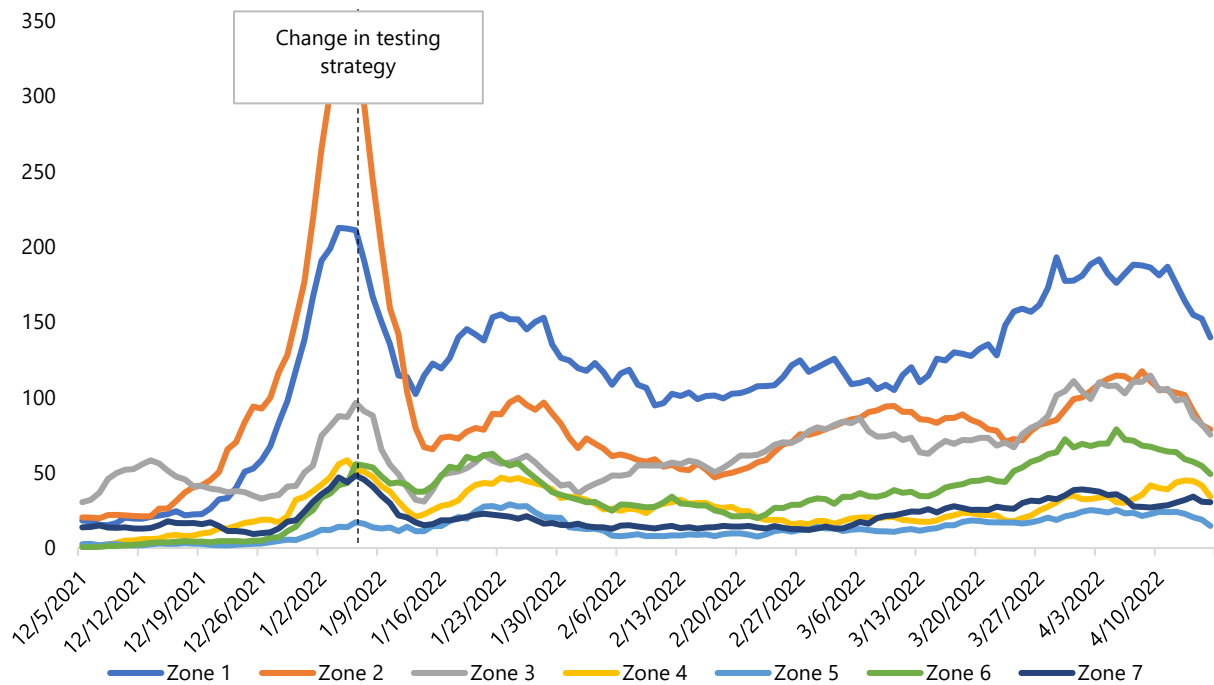


Table 3: Demographics of PCR confirmed COVID-19 cases in New Brunswick by reporting week, current and previous, and cumulative, up to April 16, 2022.



Age range	Current Reporting Week		Previous Reporting Week		Cumulative	
	Number	Percent	Number	Percent	Number	Percent
< 10 years old	79	2.7%	124	3.1%	4125	7.0%
10 - 19 years old	48	1.6%	95	2.4%	4060	6.9%
20 - 29 years old	273	9.2%	393	9.9%	8569	14.6%
30 - 39 years old	340	11.5%	541	13.7%	9028	15.4%
40 - 49 years old	375	12.7%	591	14.9%	8487	14.4%
50 - 59 years old	618	20.9%	785	19.8%	9619	16.4%
60 - 69 years old	470	15.9%	592	14.9%	6636	11.3%
70 - 79 years old	345	11.7%	410	10.3%	4017	6.8%
80 - 89 years old	283	9.6%	305	7.7%	2870	4.9%
90+ years old	125	4.2%	126	3.2%	1357	2.3%
Total	2956	100.0%	3962	100.0%	58768	100.0%
Vaccination status ⁶	Number	Percent	Number	Percent	Number ⁷	Percent
Protected	2193	74.2%	2948	74.4%	30936	61.9%
Unprotected	763	25.8%	1014	25.6%	19065	38.1%
Total	2956	100.0%	3962	100.0%	50001	100.0%

⁶Protected refers to boosted or fully vaccinated less than six months. Unprotected refers to fully vaccinated more than six months, partially vaccinated, and unvaccinated.

⁷Cases reported since December 5, 2021.

COVID-19 HOSPITALIZATIONS⁸ AND DEATH⁹ SURVEILLANCE

Table 4: Hospitalizations for COVID-19 in New Brunswick, by age groups for reporting week, previous and current, and cumulative (Data up to April 16, 2022).

Age range	Total admissions (non-ICU and ICU)			ICU admissions			Resolved or discharged	Deceased ¹⁰
	Current reporting week	Previous reporting week	Cumulative	Current reporting week	Previous reporting week	Cumulative	Cumulative	Cumulative
< 10 years old	4	1	26	0	0	1	26	0
10 – 19 years old	0	0	10	0	0	1	10	0
20 – 29 years old	3	1	33	0	0	12	31	2
30 – 39 years old	3	1	41	1	0	11	35	3
40 – 49 years old	8	5	93	1	0	35	83	15
50 – 59 years old	15	4	148	3	3	51	127	20
60 – 69 years old	20	6	212	5	1	74	180	42
70 – 79 years old	25	8	272	3	3	79	202	106
80 – 89 years old	17	13	203	2	1	29	144	116
90+ years old	7	2	86	0	0	7	46	74
Total	102	41	1124	15	8	300	884	378

⁸ Hospitalizations (including ICU admissions) are individuals that are hospitalized for COVID-19.

⁹ Deaths are those where COVID-19 was a primary or contributing factor to cause of death as per the attending physician.

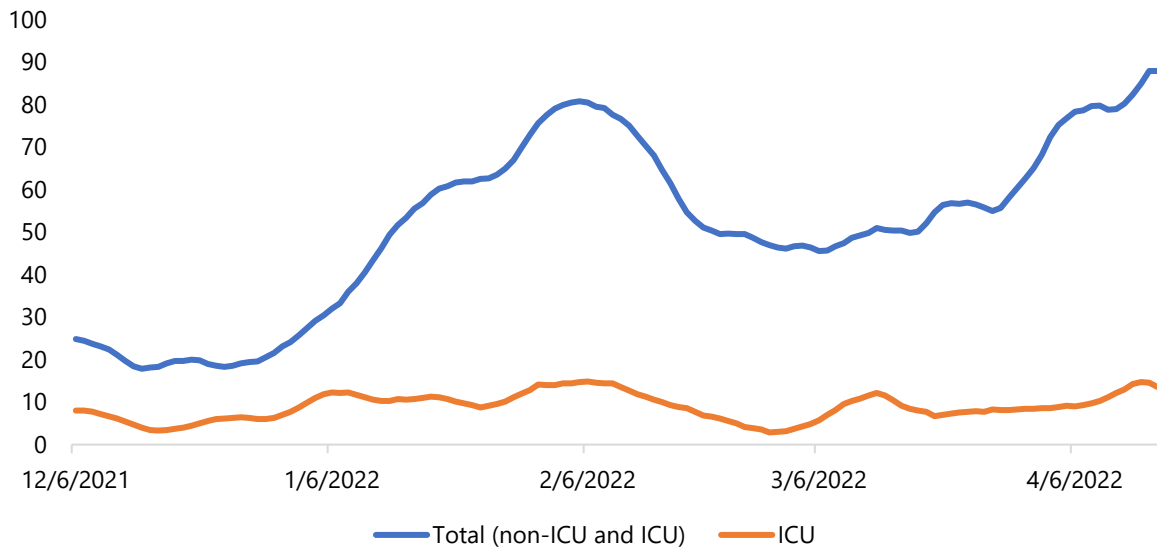
¹⁰ Deceased cases reported within and outside of hospital.



Table 5: Vaccination status, proportion, and rate per 100,000 for hospitalized and deceased cases reported since December 5, 2021 (week 49).

Vaccination status ¹¹	Hospitalizations (non-ICU and ICU)			ICU			Deceased		
	N	%	Rate per 100,000	N	%	Rate per 100,000	N	%	Rate per 100,000
Protected	360	44.2%	77.5	61	36.3%	13.1	119	51.7%	25.6
Unprotected	454	55.8%	158.6	107	63.7%	37.4	111	48.3%	38.8
Total	814	100.0%	108.4	168	100.0%	22.4	230	100.0%	30.6

Figure 3: Seven-day moving average of hospitalizations for COVID-19 since December 5, 2021 (week 49).



¹¹Protected refers to boosted or fully vaccinated less than six months. Unprotected refers to fully vaccinated more than six months, partially vaccinated, and unvaccinated.



National and International COVID-19 Activity

CANADA

- National data is showing an increase in cases (data up to April 14).
- Trends vary across the country, with some increasing, remaining stable, and decreasing.
 - Increasing: Alberta, British Columbia, Nova Scotia,
 - Stable or decreasing: Ontario, Quebec, Saskatchewan Manitoba, Newfoundland and Labrador, Prince Edward Island, Nunavut, Northwest Territories, Yukon, and New Brunswick.
- Deaths have remained relatively stable over the last month and are similar to levels in October 2021.

INTERNATIONAL

- Global case counts continue to on a downward trend, with roughly 3.6 Million cases over the last week up to April 14.
 - All global regions are showing a decline in case counts
 - Republic of Korea and Germany have the two highest new case counts in the last 7 days, followed by France, Italy, and Australia.
 - The countries with the highest rates are clustered throughout Europe.
- Global deaths also continue to decline and are roughly 11,000 deaths/week from April 11 to 14, 2022, which is comparable and to March 2020;
 - Global trends are reporting for only 4 days (April 11-14, 2022); therefore, case and death counts for the entire week could be roughly twice as high as reported above.