

FAQs – Data Session (October 2023)



1. Can GNB provide municipalities with GIS files, such as KML format, for boundaries and property boundaries?

If you visit the GeoNB Data Catalogue at <http://www.snb.ca/geonb1/e/dc/catalogue-E.asp>, you will see that many of our datasets are available for download in KML format. However, the KML format cannot handle our larger and more complex datasets. If you want a KML file for an individual PID you can use the Digital Property Map "Select Data" tool which can also be found on the GeoNB Data Catalogue (<http://geonb.snb.ca/dd/index.html>). Just zoom in until you can see the individual properties and click on the property that you want to download. A pop-up window will appear with an option to download a single PID as KML. There are additional options for obtaining KML that are more complex that can be shared by contacting: geonb@snb.ca.

2. What information is available for a parcel in that App?

Only the basic information is available, same as the main GeoNB Map Viewer: PID number, Date of last update, County, Property Map, Land Title status and Land Gazette status, but we recently added a link to "RPOL" - Real Property Online. This is for people without a PLANET account. With a credit card you can purchase more information for a PID including the owner names, deed documents, survey plans and more. RPOL gives you access to all the data in PLANET except for the owner's contact information.

3. What is the link or access point to get to the map application that Jeff is using?

Links :

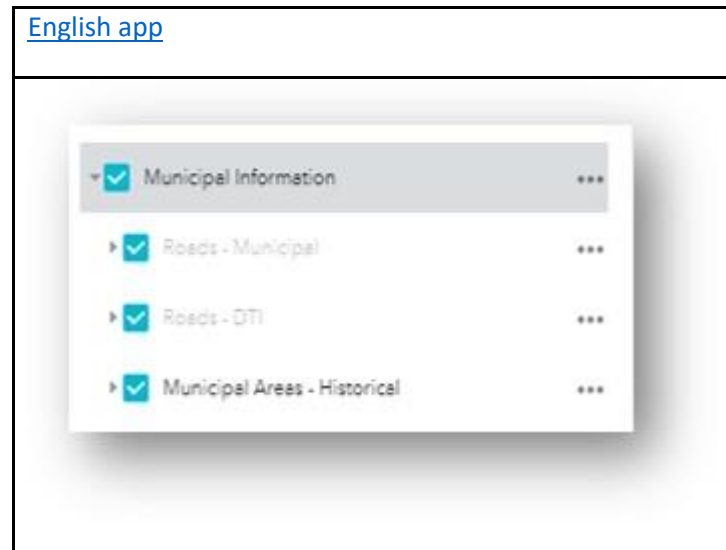
[GeoNB English](#)

4. Is the municipal roads layer available to download beyond using the REST service?

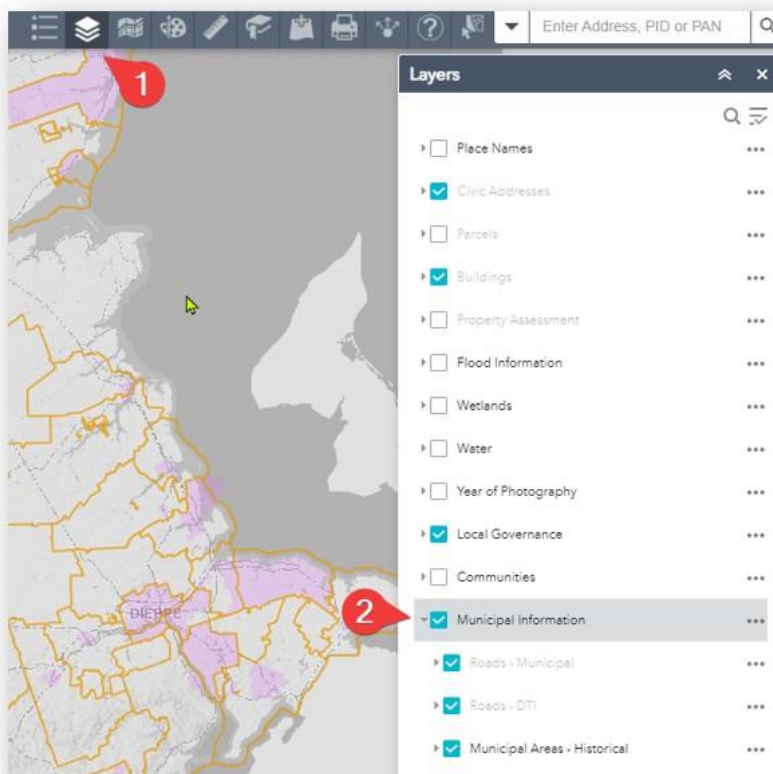
The DTI / Municipal Road layer is not on the GeoNB Data Catalogue at this time. These maps are available for download from the DTI website in PDF format. GeoNB and DTI can look into adding the data to the GeoNB Data Catalogue.

5. What is GeoNB Map viewer- Municipal information?

It is simply a copy of the GeoNB Map Viewer with several additional map layers:



These additional layers can be found in the Layers widget:



6. During the first presentation, the slide which showed the various GNB departments data which funnel into GeoNB was useful. Would it be possible to obtain a list of all these departments with full names in both languages and (if it is the case) which feature services data they own or are responsible for producing? I've often found it challenging to have a clear understanding of who owns or is responsible for what.

Here is the list of departments that share data with GeoNB:

DNRED	Crown land, forest, non-forest, New Brunswick Hydrographic Network (NBHN), air photos, coastal erosion rates, oil and natural gas leases, mineral claims, mineral leases, resource roads, protected natural areas, provincial parks, wildlife management zones, wildlife refuges, crown land conservation areas, ecosites, forest soils, peatlands, bedrock geology, candidate conserved areas, counties, parishes, drillholes, ecological land classification, nature legacy protected areas
NR Canada	Place names, aboriginal lands, railway network
ENB	Electoral districts, polling divisions, School districts, local government polling divisions
EECD	Public schools
ELG	Wetlands, protected wellfields and watersheds, local government boundaries, flood risk areas, business improvement areas, regional service commission boundaries, rural districts
DOH	Health regions
DTI	Provincial roads
JPS	Addresses, roads, 911 community boundaries
SNB	Assessment data, digital property maps, lidar data, air photos, survey control network, digital elevation models, contour lines, limits of inland fisheries, atlas of New Brunswick, building outlines, military base boundaries, pipelines, submerged lands
NBHC	NBHC Health Communities
NB Power	Transmission lines

If you have any questions about data you obtain from GeoNB, you should first reach out to geonb@snb.ca with your questions. We will reach out to the departments if additional information is required.



Acronyms:

LG - Local governments
FTB - Finance and Treasury Board
ELG - Environment and Local Government
DTI - Department of Transportation and Infrastructure
JPS - Justice and Public Safety
DNR - Natural Resources and Energy Development
THC - Tourism, Heritage and Culture
NR Canada - Natural Resources Canada
ENB - Elections NB
DOH - Department of Health
SNB - Service New Brunswick

7. When is the civic address information updated when looking at property in Planet?

Civic addresses are updated five nights per week. A new address created on Monday will be available in GeoNB on Tuesday.

8. Will there be further training opportunities for issuing civic addressing? i.e., cul-de-sacs, shared driveways?

One presentation in English was done so far but there is a plan to do a French one as well. For those scenarios with cul-de-sacs and shared driveways, they are mentioned in the documentation.

9. Can we give a civic address for a camp in the woods?

Typically, this can be done, but it would be a case-by-case basis and would need signage in order to be found. Please first contact NB9-1-1@gnb.ca.

10. Which department do municipalities need to inform to have new roads added into GeoNB?

New roads information and address errors should be sent to the NB 9-1-1 Bureau at JPS. They will add the roads to the NBRN (New Brunswick Road Network) they will appear in GeoNB, and you can turn on the Transportation layer from the Layers menu to see the latest. Please send all requests to NB9-1-1@gnb.ca.



11. Could you use Ward 5 in the rural community of Kedgwick as an example?

The layer for Restigouche Regional Service Commission is unavailable at this time as without the data it will not open the Kedgwick region. Please note ward five is for the electoral votes vs. the subunits which are completely different things which should have been explained. Therefore, in your municipality you could have been divided in wards for voting that is one thing but completely different for taxation and subunits. Those are not the same thing.