
GOVERNMENT OF NEW BRUNSWICK

Workforce Profile 2022

Government of New Brunswick Workforce Profile 2022

Province of New Brunswick
PO 6000, Fredericton NB

E3B 5H1 CANADA
GNB.CA

ISBN 978-1-4605-3417-5 (Bilingual print edition)
ISBN 978-1-4605-3415-1 (PDF: English edition)
ISBN 978-1-4605-3416-8 (PDF: French edition)
ISSN 1712-9931

23-00488 | 2023.07 | Printed in New Brunswick

Table of Contents

About This Report.....4

Number Of Employees In The Public Service5

Permanent And Temporary Employees In The Public Service7

Full-Time And Part-Time Employees In The Public Service8

Non-bargaining and bargaining employees in the Public Service9

Gender Distribution In The Public Service10




Age Distribution Of Public Servants12

Regional Breakdown Of Public Service Employees13



About This Report

The *Government of New Brunswick Workforce Profile* provides statistical information about key characteristics of the provincial government's workforce. The information is derived from the human resource/payroll systems for Parts 1, 2 and 3 of the Public Service.

PART		WHO IS INLUCEDED
	PART 1	Line departments, also called the Civil Service
	PART 2	Public school system (teachers, bus drivers and school district employees)
	PART 3	Health-care employees
Employees of Ambulance New Brunswick and Part 4 Crown corporations are not included in this report.		



Number Of Employees In The Public Service

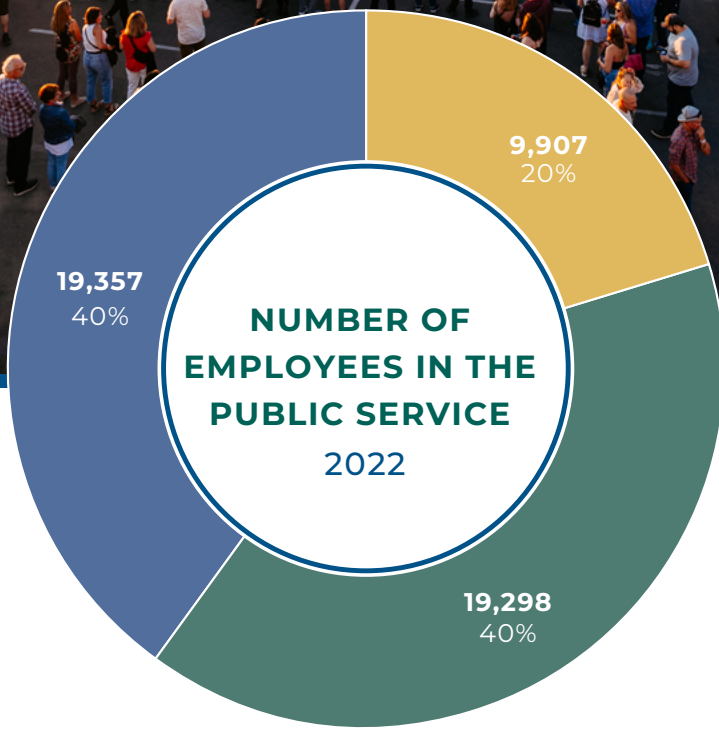
AS OF DEC. 31, 2022

There were 48,562 paid employees in Parts 1, 2 and 3 as of Dec. 31, 2022. Part 1 had 9,907 employees, representing 20 percent of the workforce. Part 2 had 19,298 employees (40 percent). Part 3 had 19,357 employees (40 percent).

The following chart shows the number of public service employees from Dec. 31, 2018 to Dec. 31, 2022 for Parts 1, 2 and 3.

DEC. 31, 2018 - DEC. 31, 2022					
	2018	2019	2020	2021	2022
PART 1	10,543	10,292	10,316	10,155	9,907
PART 2	17,805	18,194	18,504	18,296	19,298
PART 3	18,254	18,373	18,489	18,715	19,357
TOTAL	46,602	46,859	47,309	47,166	48,562





PART 1



PART 2



PART 3

Permanent And Temporary Employees In The Public Service

AS OF DEC. 31, 2022

Permanent employees are those individuals without a predetermined end date for their employment. There were 38,756 permanent employees in the New Brunswick Public Service as of Dec. 31, 2022.

Part 1 had 8,670 permanent employees, representing 22 percent of the total workforce. Part 2 had 13,951 permanent employees (36 percent). Part 3 had 16,135 employees (42 percent).

Temporary employees include those working as casuals or term employees and those working on personal service contracts. The use of temporary employees enables the provincial government to achieve results on projects and initiatives that have a limited or seasonal duration and to shift resources as priorities or the needs of the public change.

There were 9,806 temporary employees in the Public Service as of Dec. 31, 2022.

Permanent employees made up 80 percent of the public service, while 20 percent were temporary employees as of Dec. 31, 2022.

DEC. 31, 2018 - DEC. 31, 2022						
EMPLOYMENT TYPE		2018	2019	2020	2021	2022
PERMANENT	PART 1	8,419	8,339	8,343	8,269	8,670
	PART 2	14,288	14,445	14,794	*13,608	*13,951
	PART 3	15,901	16,071	16,009	15,743	16,135
	TOTAL PERMANENT	38,608	38,855	39,146	37,620	38,756
TEMPORARY	PART 1	2,124	1,953	1,973	1,886	1,237
	PART 2	3,517	3,749	3,710	*4,688	*5,347
	PART 3	2,353	2,302	2,480	2,972	3,222
	TOTAL TEMPORARY	7,994	8,004	8,163	9,546	9,806
TOTAL		46,602	46,859	47,309	47,166	48,562

* In 2021 reporting, the number of "Contract D" teachers (long-term supply) were moved from the permanent to temporary category to better reflect the employment status of those workers.

Full-Time And Part-Time Employees In The Public Service

AS OF DEC. 31, 2022

Full-time employees in Part 1 and 2 are typically expected to work 36 ¼ hours weekly. Full-time employees in Part 3 are typically expected to work 37 ½ hours weekly.

Part-time employees are those regularly scheduled to work less than full-time but more than one-third of the normal period for persons doing similar work. Part-time work occurs either because the work can be performed in less time or because an employee has indicated a preference approved by management.

There were 33,280 full-time employees and 15,282 part-time employees in the New Brunswick Public Service as of Dec. 31, 2022.

Overall, 69 percent of the public service worked full-time and 31 percent worked part-time as of Dec. 31, 2022.

DEC. 31, 2018 - DEC. 31, 2022						
EMPLOYMENT TYPE		2018	2019	2020	2021	2022
FULL-TIME	PART 1	8,982	8,903	8,944	8,900	9,390
	PART 2	11,094	10,903	11,122	10,940	11,320
	PART 3	12,054	12,200	12,398	12,253	12,570
	TOTAL FULL-TIME	32,130	32,006	32,464	32,093	33,280
PART-TIME	PART 1	1,561	1,389	1,372	1,255	517
	PART 2	6,711	7,291	7,382	7,356	7,978
	PART 3	6,200	6,173	6,091	6,462	6,787
	TOTAL PART-TIME	14,472	14,853	14,845	15,073	15,282
TOTAL		46,602	46,859	47,309	47,166	48,562

Non-bargaining and bargaining employees in the Public Service

AS OF DEC. 31, 2022

There were 42,171 bargaining employees (employees covered by a collective agreement) and 6,391 non-bargaining employees as of Dec. 31, 2022.

Bargaining employees represented 87 percent of the Public Service, while non-bargaining employees made up 13 percent as of Dec. 31, 2022.

DEC. 31, 2018 - DEC. 31, 2022						
EMPLOYMENT TYPE		2018	2019	2020	2021	2022
BARGAINING	PART 1	6,279	6,123	6,120	6,730	5,386
	PART 2	17,598	17,970	18,278	18,053	19,053
	PART 3	16,871	16,954	17,014	17,191	17,732
	TOTAL BARG.	40,748	41,047	41,412	41,974	42,171
NON-BARGAINING	PART 1	4,264	4,169	4,196	3,425	4,521
	PART 2	207	224	226	243	245
	PART 3	1,383	1,419	1,475	1,524	1,625
	TOTAL NON-BARG.	5,854	5,812	5,897	5,192	6,391
TOTAL		46,602	46,859	47,309	47,166	48,562



Gender Distribution In The Public Service

AS OF DEC. 31, 2022

New Brunswick's total population is 50 percent female and 50 percent male. Overall, the gender distribution for all parts of the Public Service is 74 percent female and 26 percent male.

The following chart shows the number of Public Service employees by gender as of Dec. 31, 2022, for Parts 1, 2 and 3. The gender distribution for Part 1 is 53 percent female and 47 percent male. Part 2 and Part 3 are similar to the overall gender distribution within the public service (Part 2: 75 percent female and 25 percent male; Part 3: 83 percent female and 17 percent male).

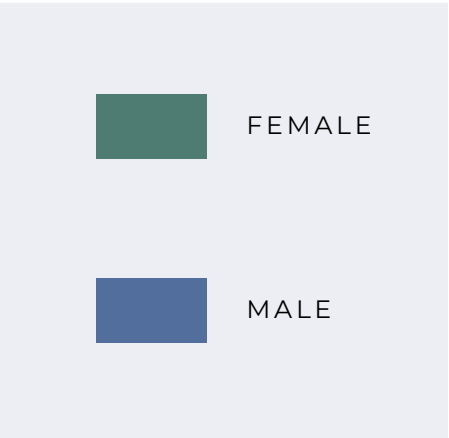
DEC. 31, 2022				
GENDER	PART 1	PART 2	PART 3	TOTAL
FEMALE	5,208	14,509	16,030	35,747
MALE	4,699	4,789	3,327	12,815
TOTAL	9,907	19,298	19,357	48,562

Statistics Canada: [Table 17-10-0005-01 Population estimates on July 1st, by age and sex](#)



GENDER DISTRIBUTION IN THE PUBLIC SERVICE

OVERALL



PART 1



PART 2



PART 3



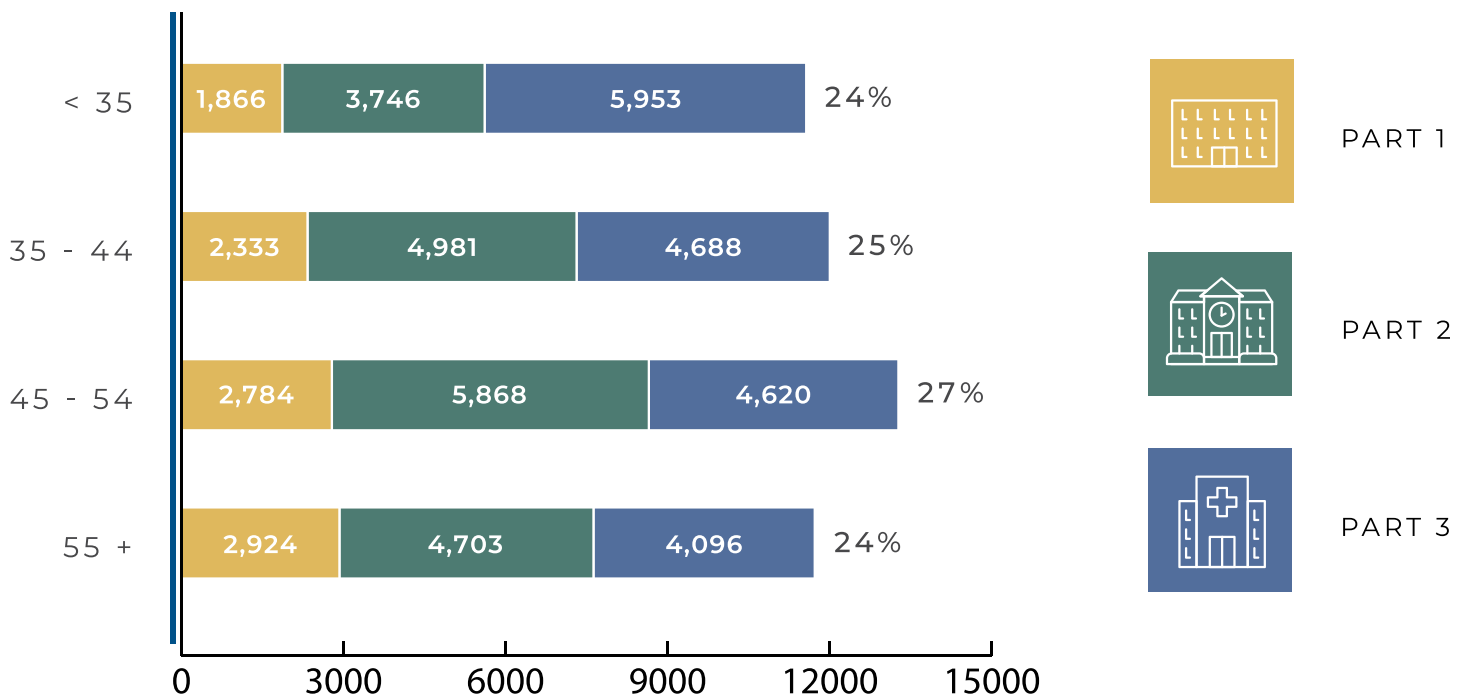
Age Distribution Of Public Servants

AS OF DEC. 31, 2022

The age distribution of employees in the Public Service has remained stable during the last five years. As of Dec. 31, 2022, 24 percent of employees were 34 years old and younger; 25 percent were 35 to 44; 27 percent were 45 to 54; and 24 percent were 55 and older.

DEC. 31, 2022				
AGE	PART 1	PART 2	PART 3	TOTAL
< 35	1,866	3,746	5,953	11,565
35 - 44	2,333	4,981	4,688	12,002
45 - 54	2,784	5,868	4,620	13,272
55 +	2,924	4,703	4,096	11,723
TOTAL	9,907	19,298	19,357	48,562

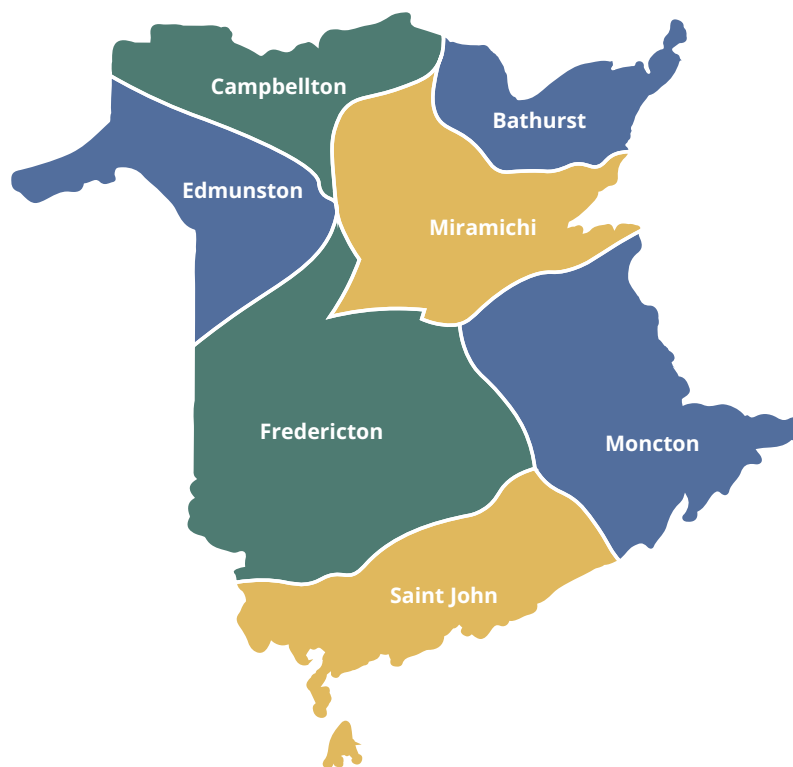
AGE DISTRIBUTION IN THE PUBLIC SERVICE



Regional Breakdown Of Public Service Employees

AS OF DEC. 31, 2022

The accompanying map shows the geographic distribution of the Public Service. While most government department head offices are in the Fredericton area, only 27 percent of permanent and temporary employees work in the capital region, while 73 percent work elsewhere in the province.



EDMUNSTON

PART 1	538
PART 2	1,114
PART 3	1,235

CAMBELLTON

PART 1	330
PART 2	1,478
PART 3	1,127

BATHURST

PART 1	685
PART 2	1,071
PART 3	1,895

MIRAMICHI

PART 1	454
PART 2	1,160
PART 3	990

FREDERICTON

PART 1	4,972
PART 2	4,187
PART 3	3,904

SAINT JOHN

PART 1	1,542
PART 2	4,362
PART 3	4,758

MONCTON

PART 1	1,386
PART 2	5,926
PART 3	5,448