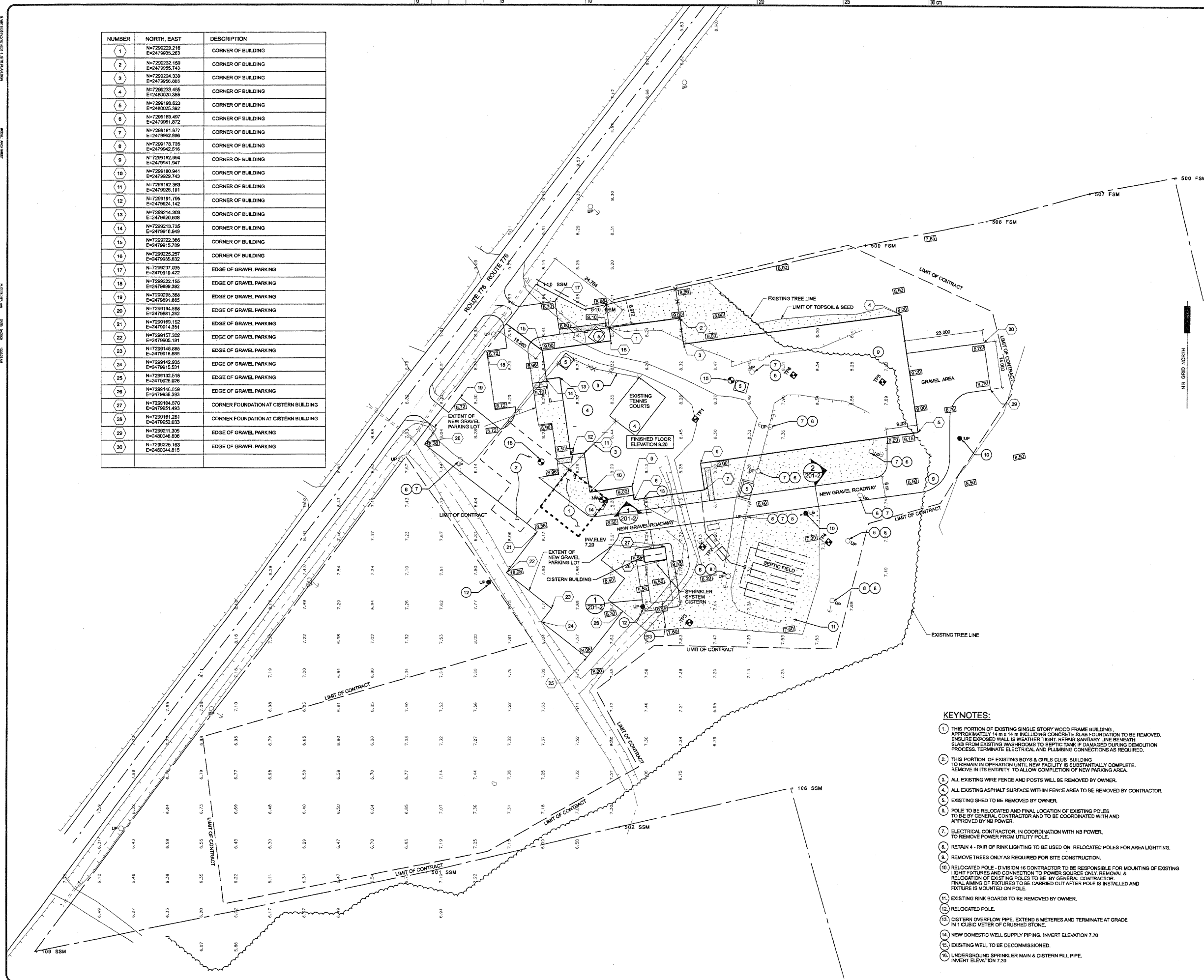


APPENDIX 'A'

ADI Limited Site Plan 2008

NUMBER	NORTH, EAST	DESCRIPTION
1	N=7296228.216 E=2479635.253	CORNER OF BUILDING
2	N=7296232.158 E=2479635.253	CORNER OF BUILDING
3	N=7296234.338 E=2479635.253	CORNER OF BUILDING
4	N=7296233.485 E=2480020.388	CORNER OF BUILDING
5	N=7296198.823 E=2480020.382	CORNER OF BUILDING
6	N=7296189.497 E=2479961.872	CORNER OF BUILDING
7	N=7296181.877 E=2479962.896	CORNER OF BUILDING
8	N=7296178.795 E=2479942.516	CORNER OF BUILDING
9	N=7296182.694 E=2479941.847	CORNER OF BUILDING
10	N=7296180.941 E=2479929.743	CORNER OF BUILDING
11	N=7296192.383 E=2479928.101	CORNER OF BUILDING
12	N=7296191.795 E=2479924.142	CORNER OF BUILDING
13	N=7296214.303 E=2479920.308	CORNER OF BUILDING
14	N=7296213.785 E=2479916.649	CORNER OF BUILDING
15	N=7296222.385 E=2479915.709	CORNER OF BUILDING
16	N=7296225.257 E=2479915.232	CORNER OF BUILDING
17	N=7296237.835 E=2479919.422	EDGE OF GRAVEL PARKING
18	N=7296222.155 E=2479899.392	EDGE OF GRAVEL PARKING
19	N=7296208.388 E=2479901.895	EDGE OF GRAVEL PARKING
20	N=7296194.898 E=2479881.282	EDGE OF GRAVEL PARKING
21	N=7296169.152 E=2479914.351	EDGE OF GRAVEL PARKING
22	N=7296157.302 E=2479905.191	EDGE OF GRAVEL PARKING
23	N=7296148.885 E=2479918.585	EDGE OF GRAVEL PARKING
24	N=7296142.935 E=2479915.531	EDGE OF GRAVEL PARKING
25	N=7296132.518 E=2479920.998	EDGE OF GRAVEL PARKING
26	N=7296146.059 E=2479935.393	EDGE OF GRAVEL PARKING
27	N=7296104.870 E=2479951.493	CORNER FOUNDATION AT CISTERN BUILDING
28	N=7296181.251 E=2479952.033	CORNER FOUNDATION AT CISTERN BUILDING
29	N=7296211.305 E=2480046.806	EDGE OF GRAVEL PARKING
30	N=7296225.163 E=2480044.815	EDGE OF GRAVEL PARKING



LEGEND:

- EXISTING GRADE
- FINAL GRADE
- ITEMS TO BE REMOVED
- EXISTING UTILITY POLE
- CONTOUR
- WELL
- NEW WELL
- PROPERTY LINE
- RELOCATED UTILITY POLE
- TEST PITS
- SIDEWALK
- NEW SWALE
- NEW BUILDING OUTLINE
- TOPSOIL & SEED AREA
- LIMIT OF CONTRACT

No.	Revision	Clk. By	Date

RELEASED FOR CONSTRUCTION

94086

CERTIFICATE OF PRACTICE

Stephen D. Skinner

ADI LIMITED

ARCHITECTURAL ASSOCIATION OF NEW BRUNSWICK

Const. North

Drawn By:	DBM/JWM
Dwg. Standards Clk. By:	MAD
Designed By:	SDS
Date Printed:	Dwg. Design Clk. By: RDT

ADI Limited
Fredericton, NB, Canada
Architectural Services

Project Title

GRAND MANAN BOYS & GIRLS CLUB / ARENA

Dwg. Title

SITE PLAN

Project No.	5911-005.1	
Dwg. No.	201-1	Rev. No. 0
Scale	1:500	

This drawing is not to be scaled

- KEYNOTES:**
1. THIS PORTION OF EXISTING SINGLE STORY WOOD FRAME BUILDING, APPROXIMATELY 14 m x 14 m INCLUDING CONCRETE SLAB FOUNDATION TO BE REMOVED. ENSURE EXPOSED WALL IS WEATHER TIGHT. REPAIR SANITARY LINE BENEATH SLAB FROM EXISTING WASHROOMS TO SEPTIC TANK IF DAMAGED DURING DEMOLITION PROCESS. TERMINATE ELECTRICAL AND PLUMBING CONNECTIONS AS REQUIRED.
 2. THIS PORTION OF EXISTING BOYS & GIRLS CLUB BUILDING TO REMAIN IN OPERATION UNTIL NEW FACILITY IS SUBSTANTIALLY COMPLETE. REMOVE IN ITS ENTIRETY TO ALLOW COMPLETION OF NEW PARKING AREA.
 3. ALL EXISTING WIRE FENCE AND POSTS WILL BE REMOVED BY OWNER.
 4. ALL EXISTING ASPHALT SURFACE WITHIN FENCE AREA TO BE REMOVED BY CONTRACTOR.
 5. EXISTING SHED TO BE REMOVED BY OWNER.
 6. POLE TO BE RELOCATED AND FINAL LOCATION OF EXISTING POLES TO BE BY GENERAL CONTRACTOR AND TO BE COORDINATED WITH AND APPROVED BY NB POWER.
 7. ELECTRICAL CONTRACTOR, IN COORDINATION WITH NB POWER, TO REMOVE POWER FROM UTILITY POLE.
 8. RETAIN 4 - PAIR OF RINK LIGHTING TO BE USED ON RELOCATED POLES FOR AREA LIGHTING.
 9. REMOVE TREES ONLY AS REQUIRED FOR SITE CONSTRUCTION.
 10. RELOCATED POLE - DIVISION 16 CONTRACTOR TO BE RESPONSIBLE FOR MOUNTING OF EXISTING LIGHT FIXTURES AND CONNECTION TO POWER SOURCE ONLY. REMOVAL & RELOCATION OF EXISTING POLES TO BE BY GENERAL CONTRACTOR. FINAL AIMING OF FIXTURES TO BE CARRIED OUT AFTER POLE IS INSTALLED AND FIXTURE IS MOUNTED ON POLE.
 11. EXISTING RINK BOARDS TO BE REMOVED BY OWNER.
 12. RELOCATED POLE.
 13. CISTERN OVERFLOW PIPE. EXTEND 6 METERS AND TERMINATE AT GRADE IN 1 CUBIC METER OF CRUSHED STONE.
 14. NEW DOMESTIC WELL SUPPLY PIPING. INVERT ELEVATION 7.70
 15. EXISTING WELL TO BE DECOMMISSIONED.
 16. UNDERGROUND SPRINKLER MAIN & CISTERN FILL PIPE. INVERT ELEVATION 7.30