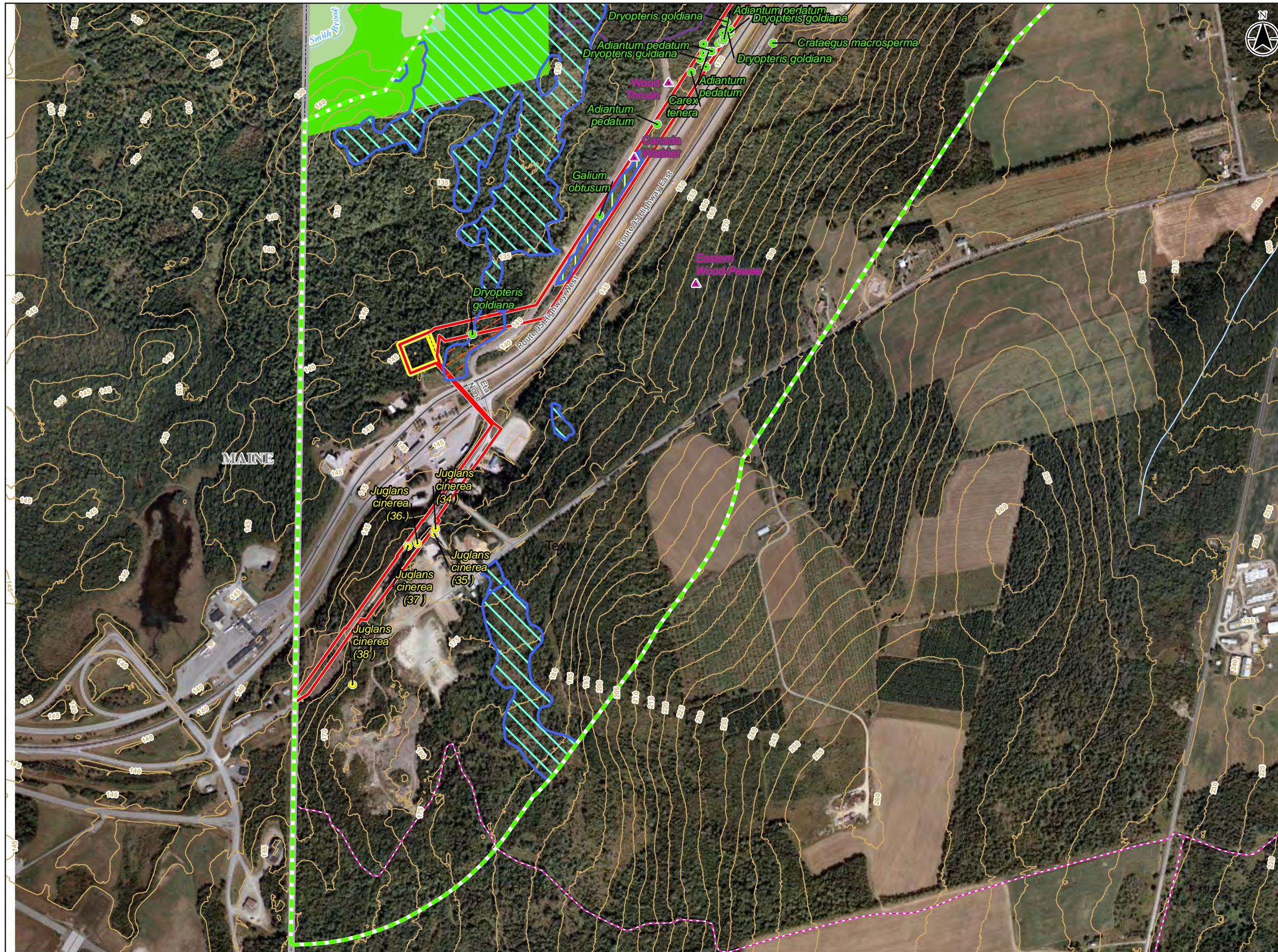


July 26, 2017

Appendix C TERRESTRIAL FEATURES OBSERVED IN THE LOCAL ASSESSMENT AREA

**ENVIRONMENTAL IMPACT ASSESSMENT (EIA) REGISTRATION FOR THE INTERNATIONAL POWER LINE
PROJECT: WOODSTOCK TO HOULTON, MAINE (TRANSMISSION LINE 0155)**

July 26, 2017



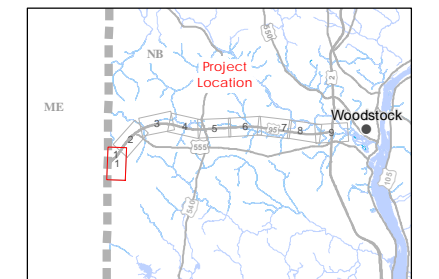
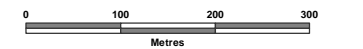
Terrestrial Features Observed in the Local Assessment Area

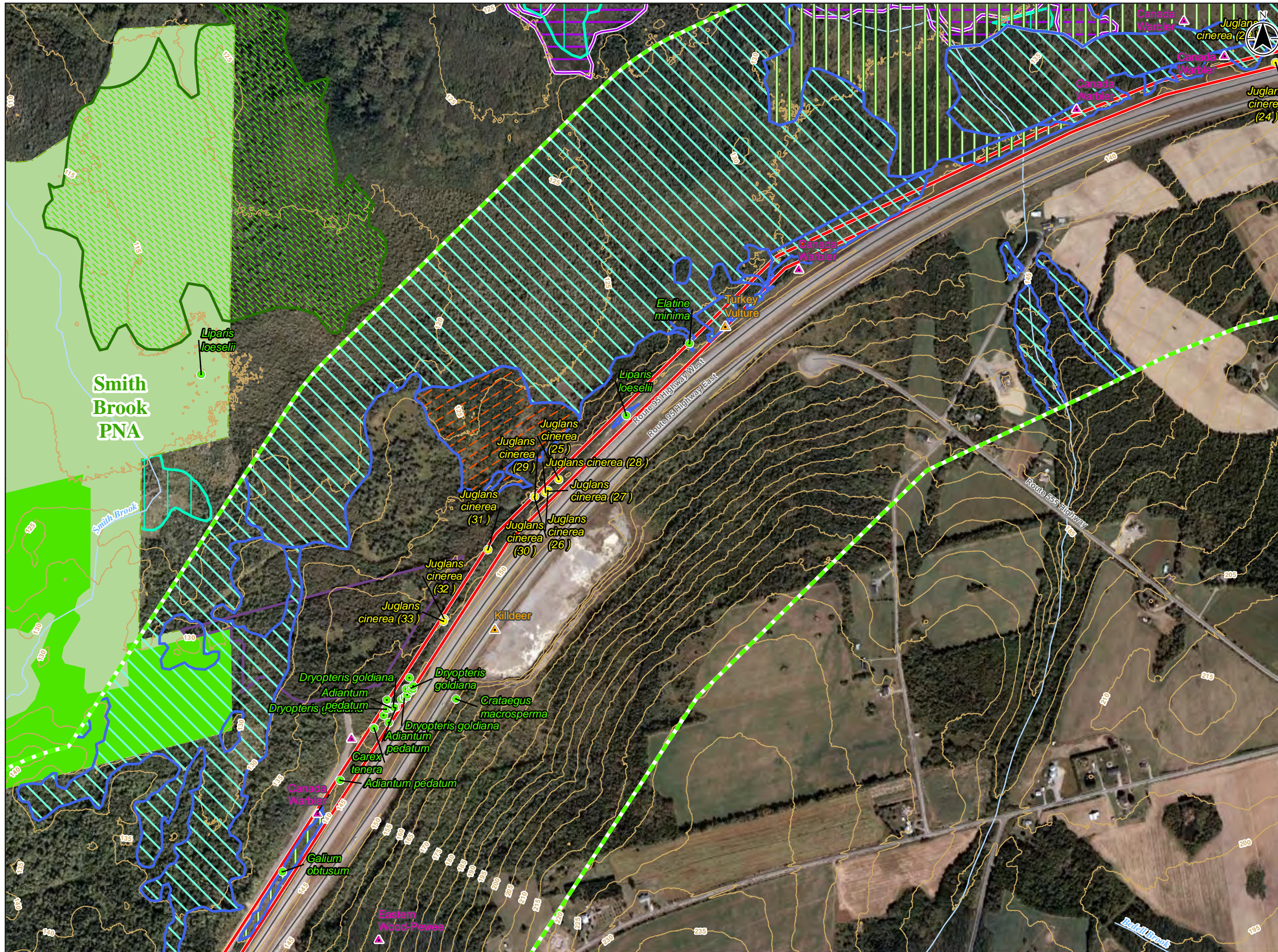
Field Observed Species at Risk and Species of Special Concern

- Vascular Plant (Species of Conservation Concern)
- Vascular Plant (Species at Risk)
- ▲ Bird (Species at Risk)

Field Delineated / Desktop Interpreted Wetland

- ▨ Mixedwood Treed Swamp
- ▨ Softwood Treed Swamp
- ▨ Tall Shrub Swamp
- ▨ Local Assessment Area for the Terrestrial Environment
- ▭ Project Development Area
- ▭ Proposed Substation
- Contour (5 m)
- NBFSC Trail
- Watercourse
- ▭ Formerly Designated Deer Wintering Area
- ▨ GeoNB-mapped Wetland
- ▨ NB DERD Wetland
- ▨ Old Forest Community and Old Forest Wildlife Habitat
- ▨ Protected Natural Area

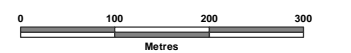




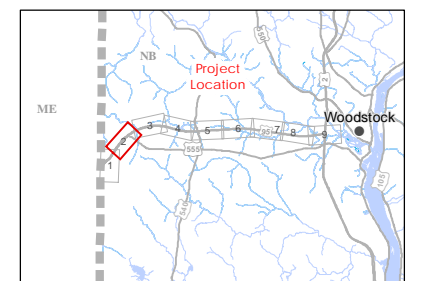
Terrestrial Features Observed in the Local Assessment Area

- Field Observed Species at Risk and Species of Special Concern**
- Vascular Plant (Species of Conservation Concern)
 - Vascular Plant (Species at Risk)
 - ▲ Bird (Species at Risk)
 - ▲ Bird (Species of Conservation Concern)
- Field Delineated / Desktop Interpreted Wetland**
- ▨ Graminoid Marsh
 - ▨ Mixedwood Treed Swamp
 - ▨ Softwood Treed Swamp
 - ▨ Tall Shrub Swamp
- Other Features:**
- ▨ Local Assessment Area for the Terrestrial Environment
 - ▭ Project Development Area
 - Contour (5 m)
 - - - NBFSC Trail
 - Watercourse
 - ▨ Interior Forest
 - ▭ Formerly Designated Deer Wintering Area
 - ▨ GeoNB-mapped Wetland
 - ▨ NB DERR Wetland
 - ▨ Old Forest Community and Old Forest Wildlife Habitat
 - ▨ Protected Natural Area

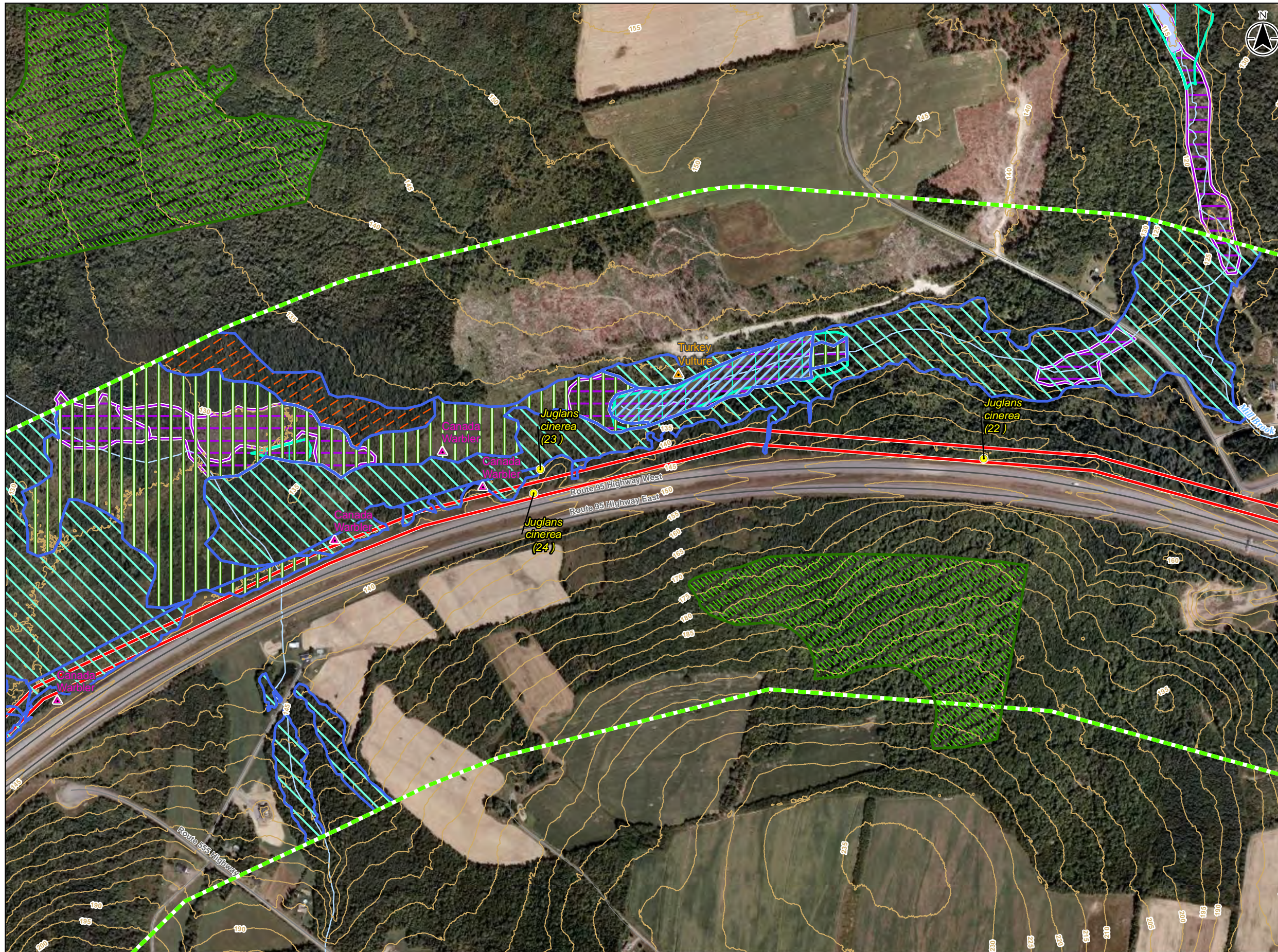
Sources: Base Data obtained from Service New Brunswick.



121812277 NAD 1983 CSRS NBD5



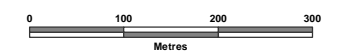
121812277 - HOULTON INTERNATIONAL TRANSMISSION LINE



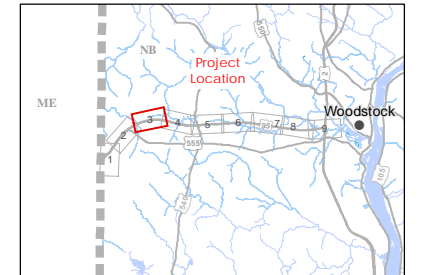
Terrestrial Features Observed in the Local Assessment Area

- Vascular Plant (Species at Risk)
- ▲ Bird (Species at Risk)
- ▲ Bird (Species of Conservation Concern)
- Field Delineated / Desktop Interpreted Wetland**
 - Graminoid Marsh
 - Mixedwood Treed Swamp
 - Softwood Treed Swamp
 - Tall Shrub Swamp
- Local Assessment Area for the Terrestrial Environment
- Project Development Area
- Contour (5 m)
- NBFSC Trail
- Watercourse
- Interior Forest
- GeoNB-mapped Wetland
- NB DERD Wetland
- Waterbody

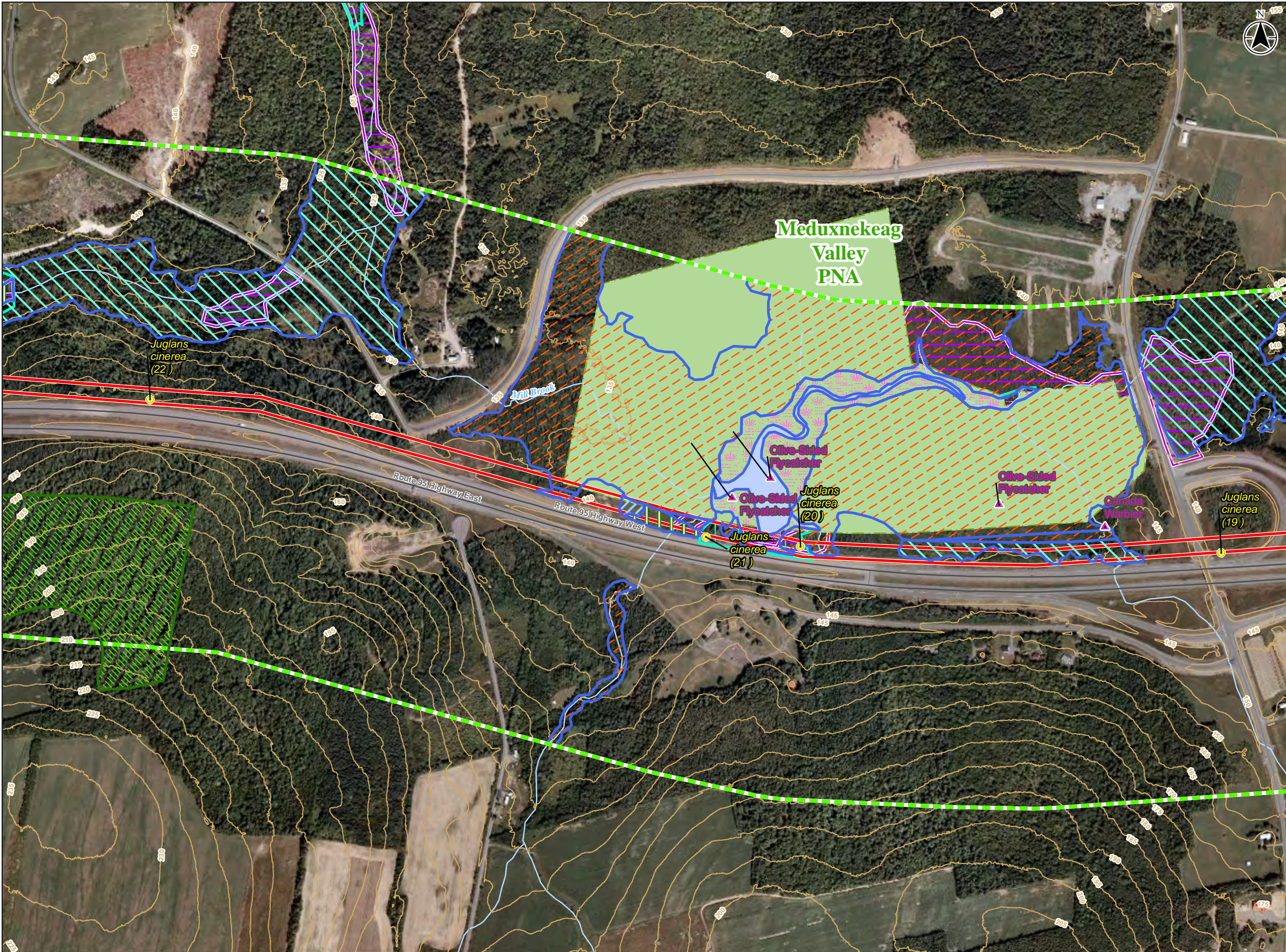
Sources: Base Data obtained from Service New Brunswick.



121812277 NAD 1983 CSRS NBDS



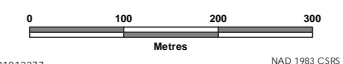
121812277 - HOULTON INTERNATIONAL TRANSMISSION LINE



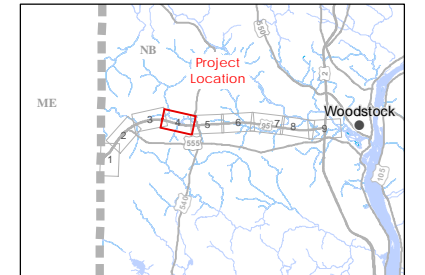
Terrestrial Features Observed in the Local Assessment Area

- Vascular Plant (Species at Risk)
- ▲ Bird (Species at Risk)
- Field Delineated / Desktop Interpreted Wetland**
 - Fen
 - Graminoid Marsh
 - Mixedwood Treed Swamp
 - Softwood Treed Swamp
 - Tall Shrub Swamp
- Local Assessment Area for the Terrestrial Environment
- Project Development Area
- Contour (5 m)
- NBFSC Trail
- Watercourse
- Interior Forest
- GeoNB-mapped Wetland
- NB DERD Wetland
- Protected Natural Area
- Waterbody

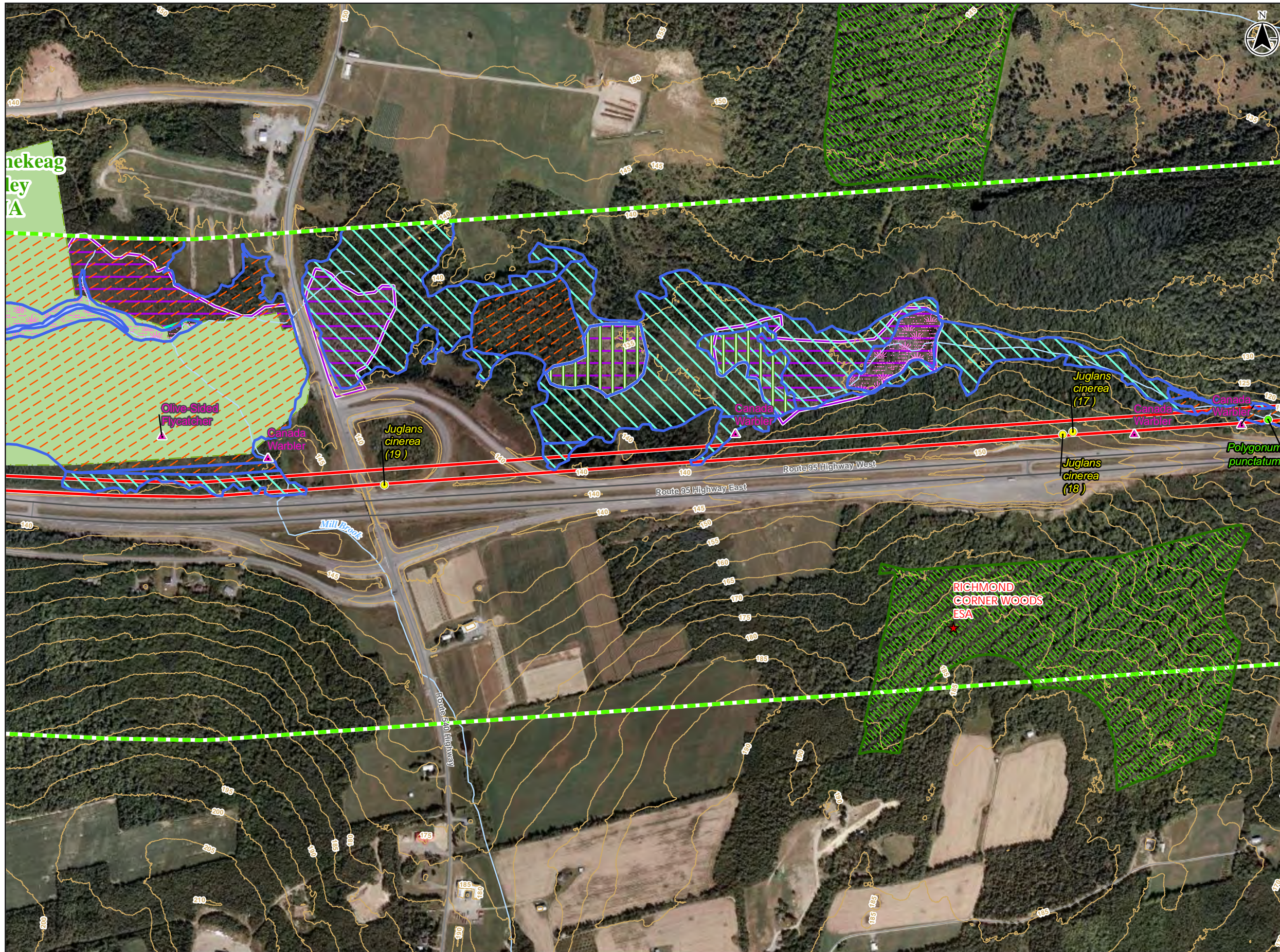
Sources: Base Data obtained from Service New Brunswick.



121812277 NAD 1983 CSRS NBDS



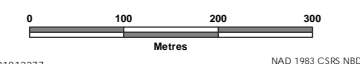
121812277 - HOULTON INTERNATIONAL TRANSMISSION LINE



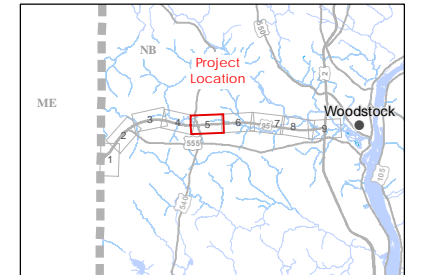
Terrestrial Features Observed in the Local Assessment Area

- ★ Environmentally Significant Area
- Field Observed Species at Risk and Species of Special Concern**
 - Vascular Plant (Species of Conservation Concern)
 - Vascular Plant (Species at Risk)
 - ▲ Bird (Species at Risk)
- Field Delineated / Desktop Interpreted Wetland**
 - ▨ Fen
 - ▨ Graminoid Marsh
 - ▨ Mixedwood Treed Swamp
 - ▨ Softwood Treed Swamp
 - ▨ Tall Shrub Swamp
- ▨ Local Assessment Area for the Terrestrial Environment
- ▨ Project Development Area
- Contour (5 m)
- - - NBFSC Trail
- Watercourse
- ▨ Interior Forest
- ▨ GeoNB-mapped Wetland
- ▨ NB DERD Wetland
- ▨ Protected Natural Area
- ▨ Waterbody

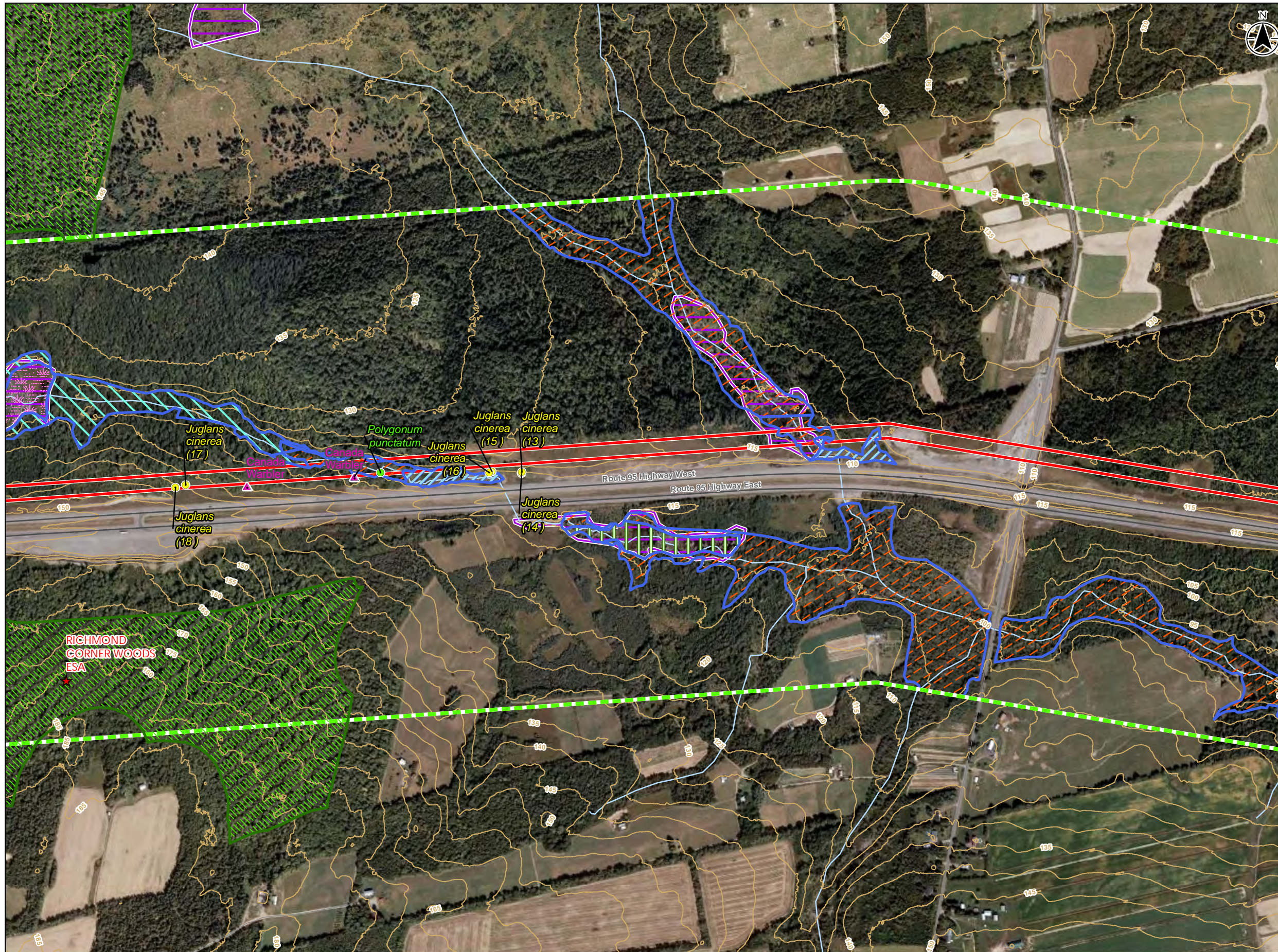
Sources: Base Data obtained from Service New Brunswick.



121812277 NAD 1983 CSRS NBD5



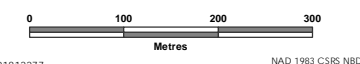
121812277 - HOULTON INTERNATIONAL TRANSMISSION LINE



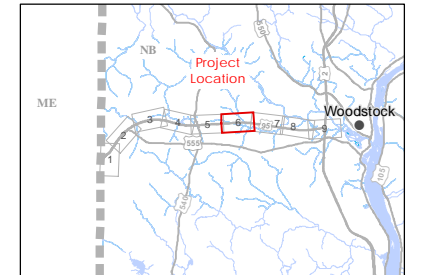
Terrestrial Features Observed in the Local Assessment Area

- ★ Environmentally Significant Area
- Field Observed Species at Risk and Species of Special Concern**
 - Vascular Plant (Species of Conservation Concern)
 - Vascular Plant (Species at Risk)
 - ▲ Bird (Species at Risk)
- Field Delineated / Desktop Interpreted Wetland**
 - ▨ Fen
 - ▨ Graminoid Marsh
 - ▨ Mixedwood Treed Swamp
 - ▨ Softwood Treed Swamp
 - ▨ Tall Shrub Swamp
- ▨ Local Assessment Area for the Terrestrial Environment
- ▭ Project Development Area
- Contour (5 m)
- - - NBFSC Trail
- Watercourse
- ▨ Interior Forest
- ▨ NB DERD Wetland
- ▨ Protected Natural Area
- ▨ Waterbody

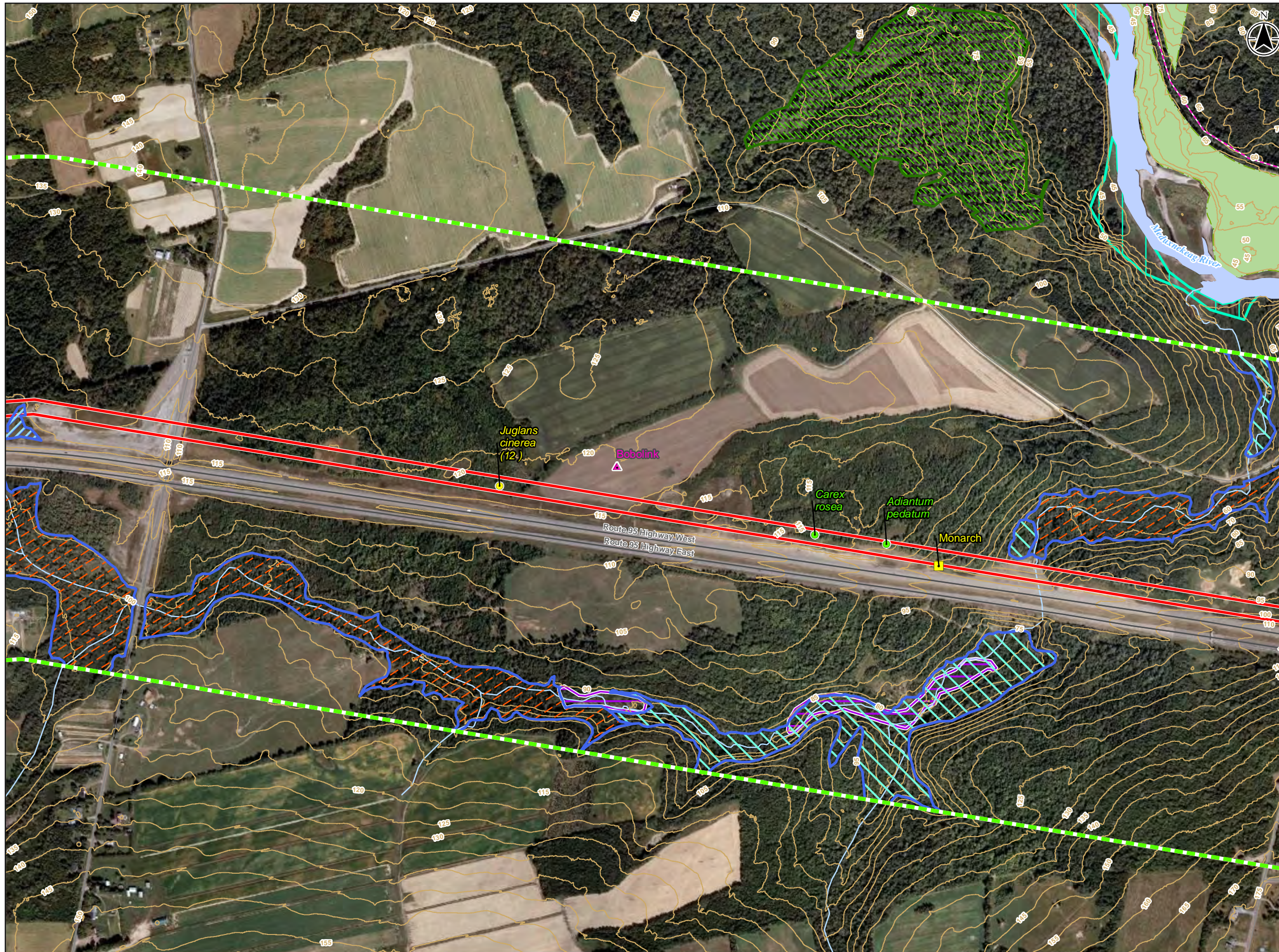
Sources: Base Data obtained from Service New Brunswick.



121812277 NAD 1983 CSRS NBDS



121812277 - HOULTON INTERNATIONAL TRANSMISSION LINE



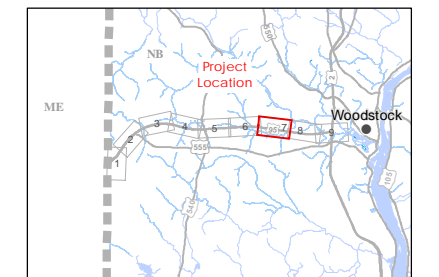
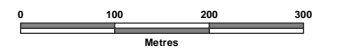
Terrestrial Features Observed in the Local Assessment Area

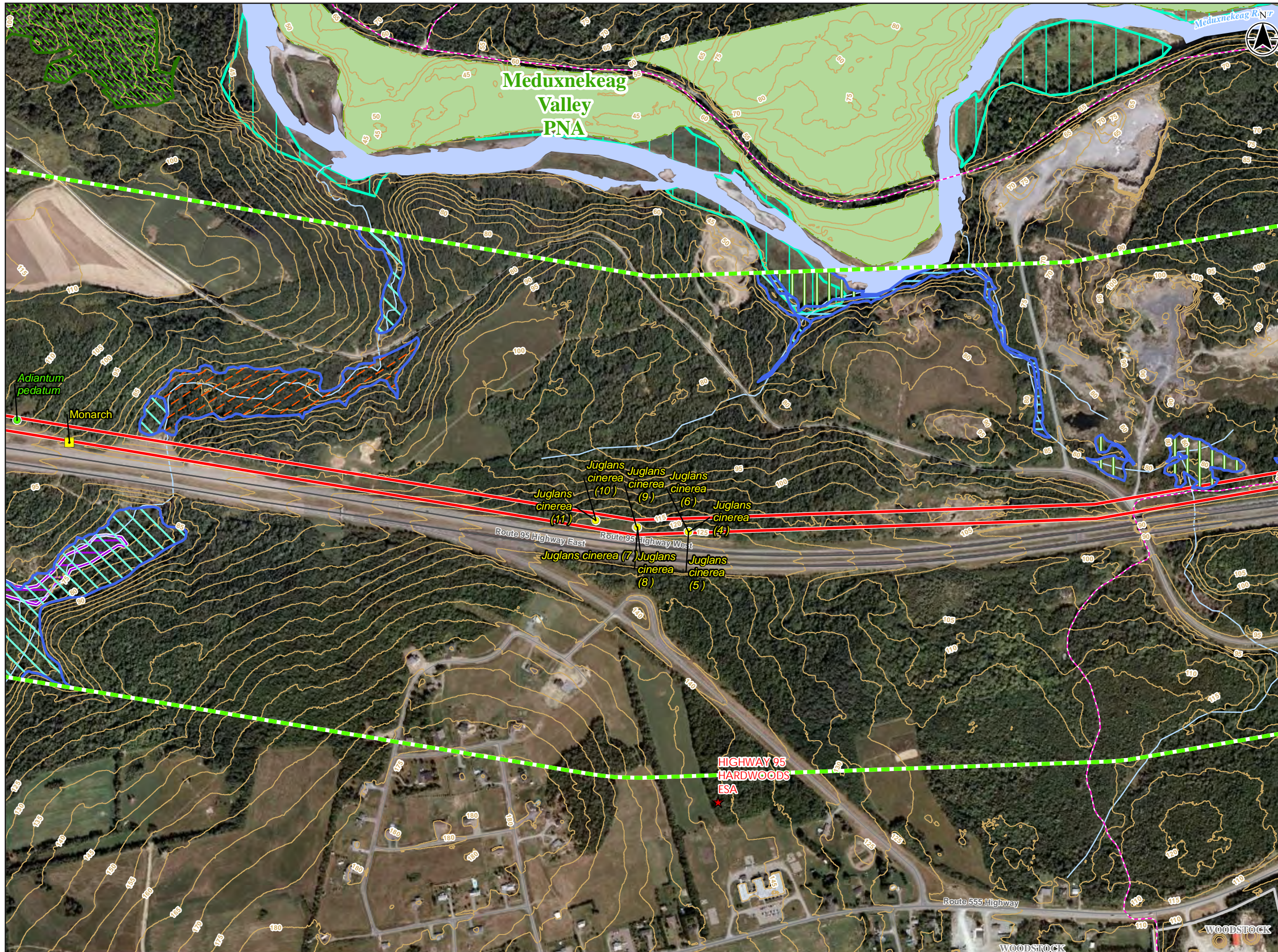
Field Observed Species at Risk and Species of Special Concern

- Vascular Plant (Species of Conservation Concern)
- Vascular Plant (Species at Risk)
- Insect Observation (Species at Risk)
- ▲ Bird (Species at Risk)

Field Delineated / Desktop Interpreted Wetland

- Graminoid Marsh
- Mixedwood Treed Swamp
- Softwood Treed Swamp
- Local Assessment Area for the Terrestrial Environment
- Project Development Area
- Contour (5 m)
- NBFSC Trail
- Watercourse
- Interior Forest
- GeoNB-mapped Wetland
- NB DERD Wetland
- Protected Natural Area
- Waterbody

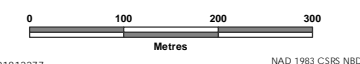




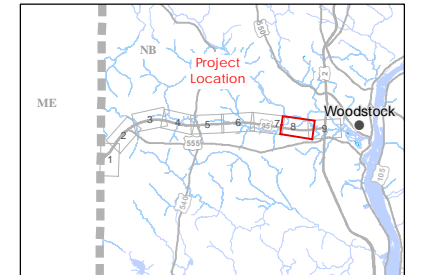
Terrestrial Features Observed in the Local Assessment Area

- ★ Environmentally Significant Area
- Field Observed Species at Risk and Species of Special Concern**
 - Vascular Plant (Species of Conservation Concern)
 - Vascular Plant (Species at Risk)
 - Insect Observation (Species at Risk)
- Field Delineated / Desktop Interpreted Wetland**
 - Hardwood Treed Swamp
 - Mixedwood Treed Swamp
 - Softwood Treed Swamp
 - Tall Shrub Swamp
- Local Assessment Area for the Terrestrial Environment
- Project Development Area
- Contour (5 m)
- - - NBFSC Trail
- Watercourse
- Interior Forest
- GeoNB-mapped Wetland
- NB DERD Wetland
- Municipal Area
- Protected Natural Area
- Waterbody

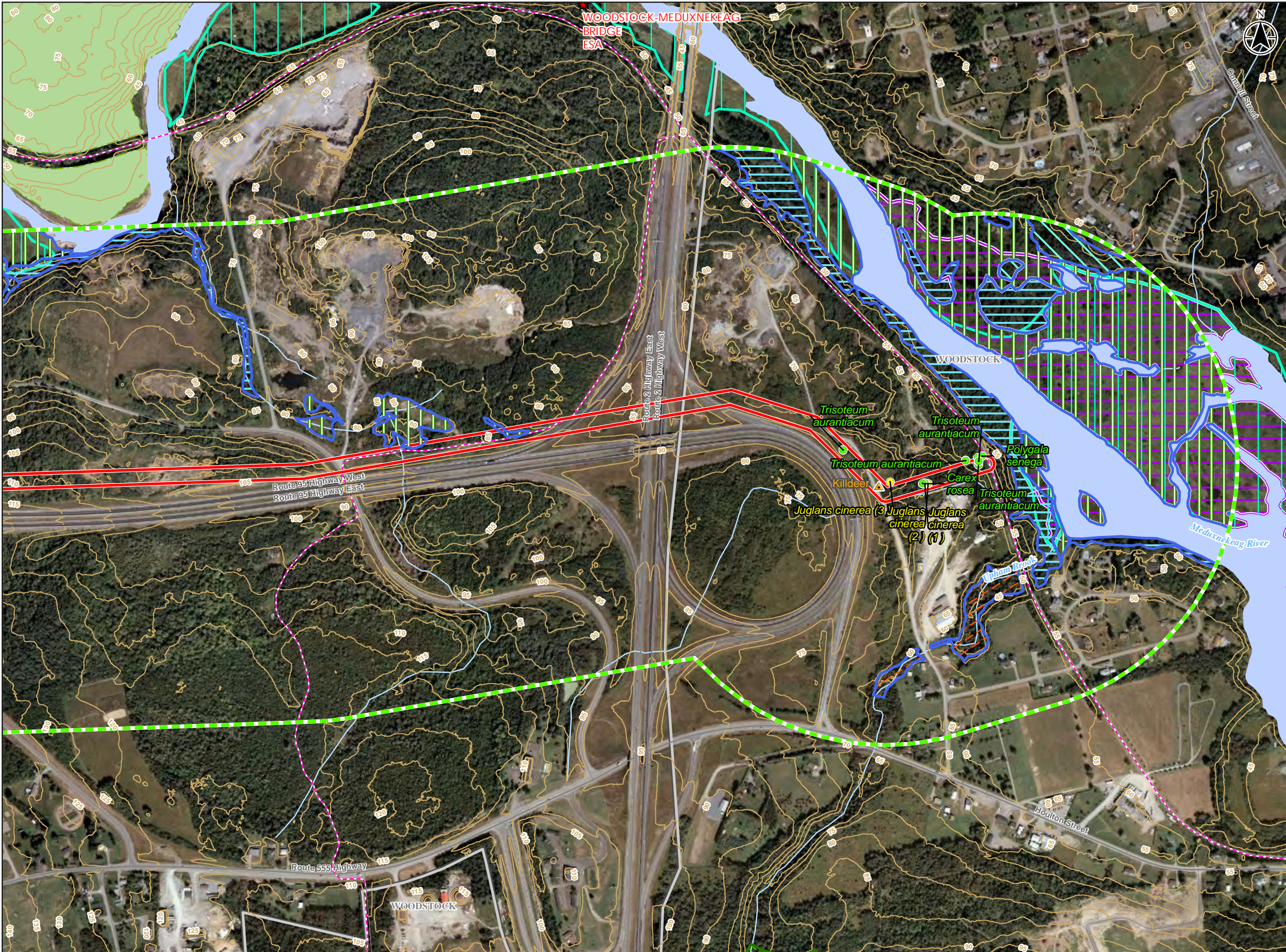
Sources: Base Data obtained from Service New Brunswick.



121812277 NAD 1983 CSRS NBDS



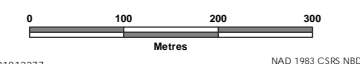
121812277 - HOULTON INTERNATIONAL TRANSMISSION LINE



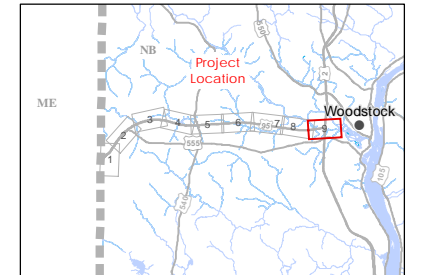
Terrestrial Features Observed in the Local Assessment Area

- ★ Environmentally Significant Area
- Field Observed Species at Risk and Species of Special Concern**
 - Vascular Plant (Species of Conservation Concern)
 - Vascular Plant (Species at Risk)
- Field Delineated / Desktop Interpreted Wetland**
 - Hardwood Treed Swamp
 - Mixedwood Treed Swamp
 - Softwood Treed Swamp
 - Tall Shrub Swamp
- Local Assessment Area for the Terrestrial Environment
- Project Development Area
- Contour (5 m)
- - - NBFSC Trail
- Watercourse
- Interior Forest
- GeoNB-mapped Wetland
- NB DERD Wetland
- Municipal Area
- Protected Natural Area
- Waterbody

Sources: Base Data obtained from Service New Brunswick.



121812277 NAD 1983 CSRS NBDS



121812277 - HOULTON INTERNATIONAL TRANSMISSION LINE

