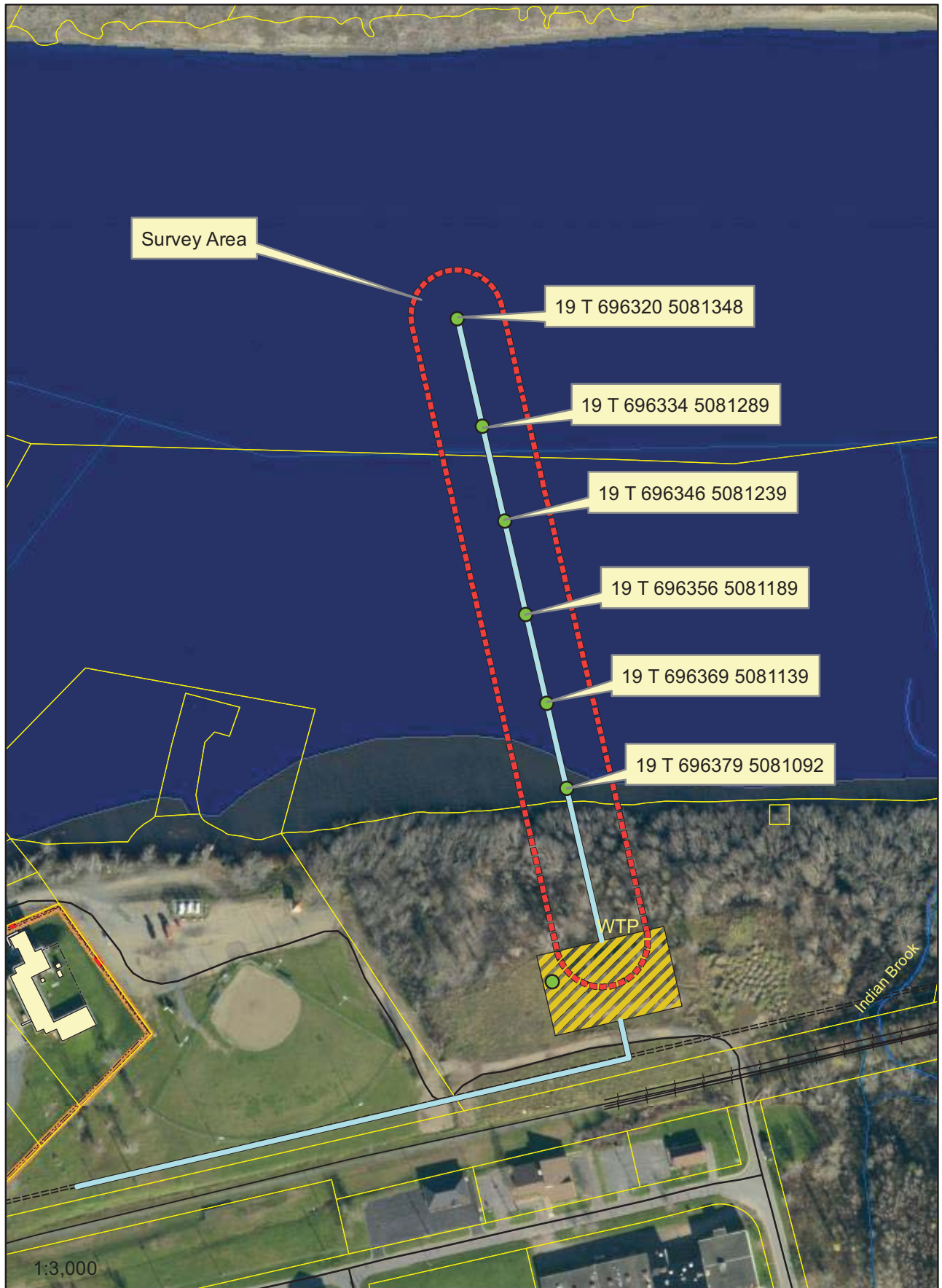


Appendix G

***Underwater Video Transcript, Dominator
Marine Services Inc., July 2014***



**Video Transcript
Transect #1**

Site: Oromocto River, NB

Date: 28-Jul-14

| Position (UTM) | Station | Depth (m) | Sediment Type | Sediment Colour | Macrofauna / flora Presence / Absence |
|--|----------------|------------------|----------------------|------------------------|--|
| Start 19 069 6368 508 1139 | 0m | <1m | Silt | Brown | Aquatic grass (com.), freshwater bivalve (occ.) |
| | 10m | <1m | Silt | Brown | Aquatic grass (r.), freshwater bivalve (com.) |
| | 20m | 1m | Silt | Brown | Freshwater bivalve (com.), shell debris, timber debris |
| | 30m | >1m | Silt, sand | Brown | Freshwater bivalve (r.), shell debris, timber debris |
| | 40m | >1m | Silt, sand | Brown | Shell debris, timber debris |
| | 50m | >1m | Silt, sand | Brown | Shell debris, timber debris |
| | 60m | >1m | Sand, silt | Brown | Timber debris |
| | 70m | 2m | Sand, silt | Brown | Timber debris |
| | 80m | >2m | Sand, silt | Brown | Timber debris |
| | 90m | >2m | Sand, silt, cobble | Brown | Timber debris |
| | 100m | >2m | Sand, silt, cobble | Brown | Timber debris |
| | 110m | >2m | Sand, silt, cobble | Brown | -- |
| | 120m | 3m | Sand, silt, cobble | Brown | -- |
| | 130m | >3m | Sand, silt, cobble | Brown | -- |
| | 140m | >3m | Sand, silt, cobble | Brown | -- |
| | 150m | >3m | Sand, silt, cobble | Brown | -- |
| | 160m | >3m | Sand, silt, cobble | Brown | -- |
| | 170m | >3m | Sand, silt | Brown | Timber debris |
| | 180m | >3m | Sand, silt | Brown | -- |
| | 190m | >3m | Sand, silt | Brown | -- |
| | 200m | >3m | Sand, silt | Brown | -- |
| | 210m | >3m | Sand, silt, cobble | Brown | -- |
| | 220m | >3m | Silt, sand | Brown | -- |
| | 230m | >3m | Silt, sand | Brown | Timber debris |
| | 240m | >3m | Silt, sand | Brown | -- |
| 250m | >3m | Silt, sand | Brown | -- | |
| Finish 19 069 6324 508 1376 | | | | | |

**Video Transcript
Transect #2**

Site: Oromocto River, NB

Date: 28-Jul-14

| Position (UTM) | Station | Depth (m) | Sediment Type | Sediment Colour | Macrofauna / flora Presence / Absence |
|--|---------|--------------------|--------------------|-----------------|--|
| Start 19 069 6346 508 1146 | 0m | <1m | Silt | Brown | Aquatic grass (com.), freshwater bivalve (com.) |
| | 10m | <1m | Silt | Brown | Aquatic grass (r.), freshwater bivalve (com.), timber debris |
| | 20m | 1m | Silt | Brown | Freshwater bivalve (r.), shell debris, timber debris |
| | 30m | >1m | Silt, sand | Brown | Timber debris |
| | 40m | >1m | Silt, sand | Brown | Timber debris |
| | 50m | >1m | Sand, silt | Brown | Timber debris, shell debris |
| | 60m | >1m | Sand, silt | Brown | Shell debris |
| | 70m | 2m | Sand, silt, cobble | Brown | Shell debris |
| | 80m | >2m | Sand, silt, cobble | Brown | Shell debris |
| | 90m | >2m | Sand, silt, cobble | Brown | Timber debris |
| | 100m | >2m | Sand, silt, cobble | Brown | -- |
| | 110m | >2m | Sand, silt, cobble | Brown | -- |
| | 120m | 3m | Sand, silt, cobble | Brown | -- |
| | 130m | >3m | Sand, silt, cobble | Brown | -- |
| | 140m | >3m | Sand, silt, cobble | Brown | Timber debris |
| | 150m | >3m | Sand, silt, cobble | Brown | Shell debris |
| | 160m | >3m | Sand, silt | Brown | Shell debris |
| | 170m | >3m | Sand, silt | Brown | -- |
| | 180m | >3m | Sand, silt | Brown | -- |
| | 190m | >3m | Sand, silt | Brown | -- |
| 200m | >3m | Sand, silt | Brown | -- | |
| 210m | >3m | Sand, silt, cobble | Brown | -- | |
| 220m | >3m | Sand, silt, cobble | Brown | -- | |
| 230m | >3m | Sand, silt | Brown | Shell debris | |
| 240m | >3m | Sand, silt | Brown | Shell debris | |
| 250m | >3m | Sand, silt | Brown | -- | |
| Finish 19 069 6303 508 1380 | | | | | |

**Video Transcript
Transect #3**

Site: Oromocto River, NB

Date: 28-Jul-14

| Position (UTM) | Station | Depth (m) | Sediment Type | Sediment Colour | Macrofauna / flora Presence / Absence |
|--|---------|------------|--------------------|-----------------|---|
| Start 19 069 6392 508 1142 | 0m | <1m | Silt | Brown | Aquatic grass (com.), freshwater bivalve (com.) |
| | 10m | <1m | Silt | Brown | Aquatic grass (r.), freshwater bivalve (com.), shell debris |
| | 20m | 1m | Silt | Brown | Freshwater bivalve (com.), shell debris, timber debris |
| | 30m | >1m | Silt, sand | Brown | Freshwater bivalve (r.), shell debris |
| | 40m | >1m | Silt, sand | Brown | Shell debris |
| | 50m | >1m | Silt, sand | Brown | Timber debris |
| | 60m | >1m | Sand, silt | Brown | Timber debris |
| | 70m | 2m | Sand, silt | Brown | Timber debris |
| | 80m | >2m | Sand, silt | Brown | Shell debris |
| | 90m | >2m | Sand, silt | Brown | Timber debris, shell debris |
| | 100m | >2m | Sand, silt, cobble | Brown | Timber debris, shell debris |
| | 110m | >2m | Sand, silt | Brown | Timber debris, shell debris |
| | 120m | 3m | Sand, silt | Brown | -- |
| | 130m | >3m | Sand, silt | Brown | Timber debris |
| | 140m | >3m | Sand, silt | Brown | Timber debris |
| | 150m | >3m | Sand, Silt | Brown | Timber debris |
| | 160m | >3m | Sand, silt, cobble | Brown | Timber debris |
| | 170m | >3m | Sand, silt | Brown | Timber debris |
| | 180m | >3m | Sand, silt | Brown | Timber debris, shell debris |
| | 190m | >3m | Sand, silt | Brown | Timber debris, shell debris |
| 200m | >3m | Sand, silt | Brown | Shell debris | |
| 210m | >3m | Sand, silt | Brown | Shell debris | |
| 220m | >3m | Sand, silt | Brown | -- | |
| 230m | >3m | Sand, silt | Brown | -- | |
| 240m | >3m | Sand, silt | Brown | Timber debris | |
| 250m | >3m | Sand, silt | Brown | -- | |
| Finish 19 069 6347 508 1384 | | | | | |