

“INFORMATION TO TENDERERS”

for

CALL FOR TENDERS

PEL 03-17

PEAT EXPLORATION LICENCE



**NEW BRUNSWICK DEPARTMENT OF
ENERGY AND RESOURCE DEVELOPMENT
MINERALS AND RESOURCE DEVELOPMENT BRANCH**

PEL 03-17

Closing Date
February 27, 2018

**CALL FOR TENDERS
PEL 03-17
PEAT EXPLORATION LICENCE**

Offers to acquire a **peat exploration licence** for peat exploration for the parcels (including any subsequent amendments) contained in Call for Tenders PEL 03-17 will be accepted up to the tender closing time and date of **2:00 PM, Fredericton (Atlantic) time on February 27th, 2018** in Minerals and Resource Development Branch, Department of Energy and Resource Development (ERD), Hugh John Flemming Forestry Complex, 1350 Regent St. Fredericton, New Brunswick, CANADA E3C 2G6.

I. INFORMATION ON CALL FOR TENDERS

Please read this Information to Tenderers document carefully and in its entirety.

1. ERD's Call for Tenders PEL 03-17 is offering 2 parcels consisting of 1 Peat Exploration Licence, and is issued as per the following:
 - **Bog #376, 165 hectares, estimated commercial viability**
 - **Bog #376A, 41 hectares, estimated commercial viability**

The Peat Exploration Licence will be administered as an individual licence upon being granted by the Minister of Energy and Resource Development (the "Minister"), and will be managed under the *Quarriable Substances Act*.

II. NOTICE TO BIDDERS

As per the provisions of the *Quarriable Substances Act* and the Peat Mining Policy, the peat exploration licence consisting of the Peat Bogs shown in Schedule "A", may be granted by the Minister to the successful bidder who:

1. Meets the tender submission requirements under Section V. of this document, and;
2. Submits a development proposal that demonstrates aspects of the selection criteria as described in Section 3.3 of the Peat Mining Policy (http://www2.gnb.ca/content/dam/gnb/Departments/en/pdf/Minerals-Minerales/Peat_Mining_Policy-e.pdf) and reiterated below;

Proposals will be examined according to the following criteria:

Primary considerations

- Economic benefits to the Province: value-added production, capital investment and employment
- Replacement of lost base capacity on Crown lands to maintain current level of activity and employment.

Secondary considerations

- Past performance and risk assessment
- General business information and financial performance

New entrants:

- New entrants are required to process in the Province 100% of the peat extracted into value-added peat.

III. CONSULTATION

The successful proponent will be subject to compliance with the Government of New Brunswick Duty to Consult Policy, which can be found on the Aboriginal Affairs Secretariat (AAS) website at:

<http://www2.gnb.ca/content/dam/gnb/Departments/aas-saa/pdf/en/DutytoConsultPolicy.pdf>.

This policy sets out the Crown's duty to consult with First Nations when contemplating an action or a decision that may affect proven or asserted Aboriginal and Treaty rights. The procedural aspects of the Crown's duty to consult may be delegated to the proponent, who will be expected to engage First Nations and share information about the proposed project early in the process.

IV. IMPORTANT INFORMATION REGARDING ACCESS

The parcels shown in Schedule "A" may contain or do contain lands where "surface access may be subject to specific conditions or restrictions", or "surface access is not permitted". Lands known to contain these restrictions or constraints are listed in Schedule "B". All licensees will be required to abide by the various acts and regulations governing these restrictions or constraints, regardless of whether or not they are listed in this Information to Tenderers package.

While the Province has made considerable effort to ensure an accurate representation of information contained in Call for Tenders PEL 03-17 and this Information to Tenderers package, please note that it is supplied solely as a guideline for bidders. The information is not guaranteed or warranted to be accurate by the Province, nor is it necessarily comprehensive or exhaustive. Therefore, nothing in Call for Tenders PEL 03-17 or this Information to Tenderers package is intended to relieve bidders from forming their own opinions and conclusions with respect to the matters addressed in this document.

On privately owned lands, access approval is a matter between the owner, tenant or occupant and the peat exploration licensee.

V. TENDER SUBMISSION REQUIREMENTS

The parcel offered within Call for Tenders PEL 03-17 requires a separate aggregate tender submission/bid.

A tender submission for a Peat Exploration Licence must contain:

1. A tender fee of one hundred dollars (\$CAD) which is non-refundable, in the form of a cheque made payable to the Minister of Finance;
2. A development proposal;
3. Information with respect to the applicant's capability to finance the proposed development of the peatland;
4. Only one tender submission per bidder may be submitted. If more than one tender is submitted by a bidder then all tender submissions of that bidder will be rejected;
5. Each tender submission must be contained in a sealed envelope and incorporate the following on the face of the envelope:
 - a. "Tender submission for Call for Tenders PEL 03-17";
 - b. The full name and address of the bidder.

6. Each tender submission must be deposited in the tender box, or handed or mailed to the Manager of Resource Tenure on or before the time and date of the tender closing.

Tender submissions may be delivered or mailed to Mr. Anthony Howland, Manager of Resource Tenure at the following addresses:

Delivery/Courier

Department of Energy and Resource Development
Minerals and Resource Development Branch
Hugh John Flemming Forestry Complex
1350 Regent Street
Fredericton, NB
E3C 2G6

Mail

Department of Energy and Resource Development
Minerals and Resource Development Branch
P.O. Box 6000
Fredericton, NB
E3B 5H1

VI. TENDER OPENING PROCESS AND SALE RESULTS

Tender submissions will be opened at **2:01 PM, Department of Energy and Resource Development, Hugh John Flemming Forestry Complex, 1350 Regent St., Fredericton, New Brunswick** Fredericton, NB time **February 27th, 2018**. A tender opening committee will open each tender submission and review the contents for adherence to the terms and conditions of the Call for Tenders, the Information to Tenderers package and the *Quarriable Substances Act*. In the event a tender submission does not meet the necessary requirements, it will be rejected. If a tender is accepted as a valid submission of tender the name of the bidder and the tender submission bid will be announced.

The bidder who is successful in submitting a winning bid must register an address for service with the Minister of Energy and Resource Development, and may be required to register as a business in New Brunswick or as an extra-provincial corporation under section 193 of the *Business Corporations Act*.

The Minister may grant a peat exploration licence to a winning bidder no later than 90 days after the tender closing date. All peat exploration licences are issued in accordance with the *Quarriable Substances Act*.

VII. INFORMATION & INQUIRIES

Peatland information that is available for public disclosure may be obtained by contacting the Promotion and Information Services section, Minerals and Resource Development Branch at 506-453-3826 (geoscience@gnb.ca).

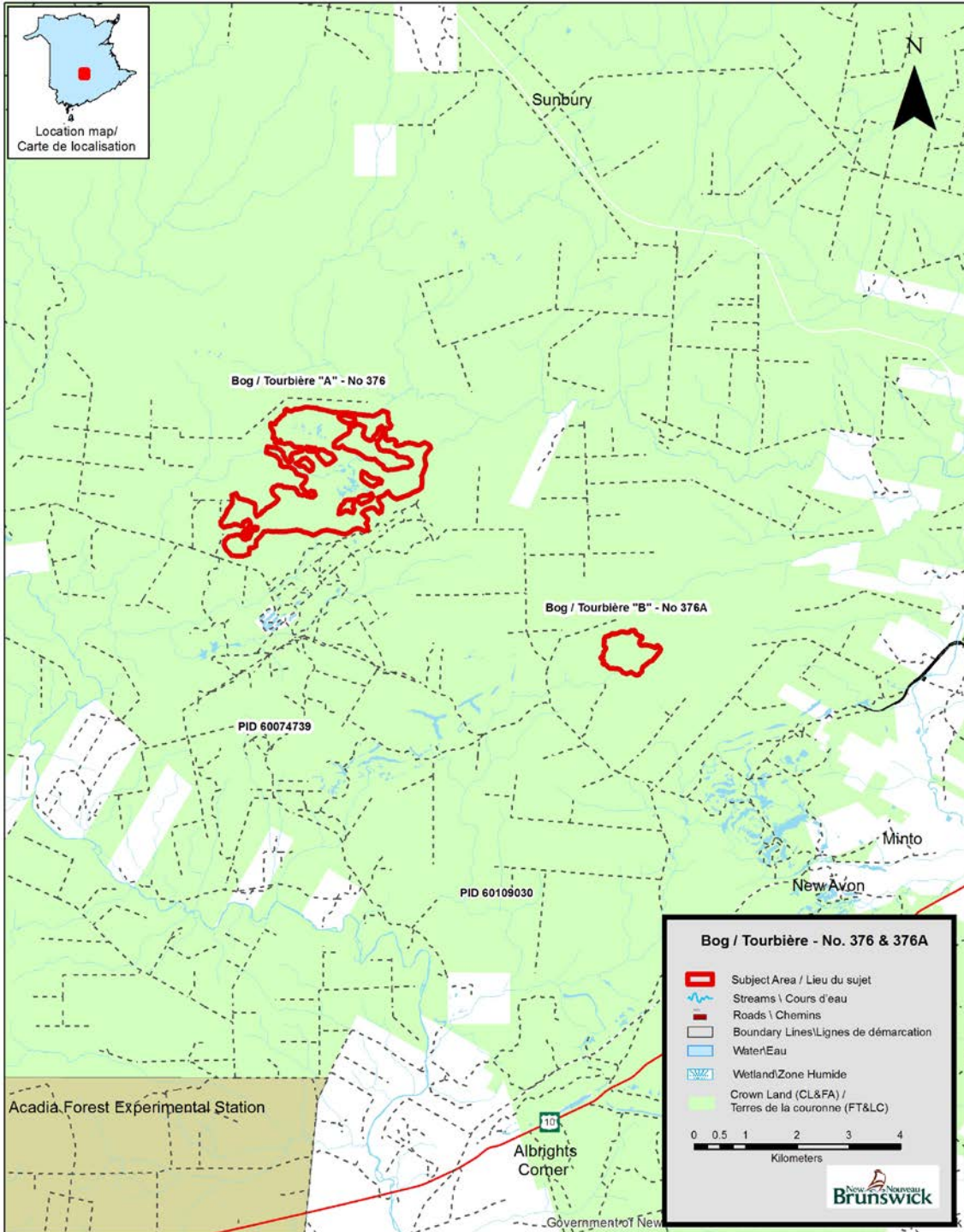
General inquiries pertaining to Call for Tenders PEL 02-17 or this Information to Tenderers package may be directed to:

Anthony Howland
Manager, Resource Tenure
Tel: (506) 453-3826
Fax: (506) 453-3671
E-mail: Anthony.Howland@gnb.ca

Amanda Keddy
Peat Resources Specialist
Tel: (506) 453-3826
Fax: (506) 453-3671
E-mail: Amanda.Keddy@gnb.ca

**CALL FOR TENDERS
 PEL 03-17
 PEAT EXPLORATION RIGHTS**

SCHEDULE "A"



CALL FOR TENDERS

PEL 03-17

PEAT EXPLORATION RIGHTS

SCHEDULE "B"

RESTRICTIONS OR CONSTRAINTS

As noted in section IV of this Information to Tenderers document for Call for Tenders PEL 03-17, parcels shown in Schedule "A" may contain or do contain lands where "surface access may be subject to specific conditions or restrictions", or "surface access is not permitted". All licensees will be required to abide by the various acts and regulations governing these restrictions or constraints, regardless of whether or not they are listed in this Information to Tenderers package. In addition, the following information is not guaranteed or warranted to be accurate by the Province, nor is it necessarily comprehensive or exhaustive. Nothing in Call for Tenders PEL 03-17 or this Information to Tenderers package is intended to relieve bidders from forming their own opinions and conclusions with respect to the matters addressed in this document.

Prospective bidders are strongly encouraged to familiarize themselves with all lands within a tender parcel(s) prior to submitting a bid.

Surface access of any type within municipal boundaries or areas may NOT be permitted, or may be subject to specific conditions or restrictions.

Surface access is NOT permitted within Provincial Parks.

Restriction/Constraint	Agencies
National Wildlife Area, Wetlands	Canadian Wildlife Service Environment and Climate Change Canada 17 Waterfowl Lane, PO Box 6227 Sackville, NB E4L 1G6 Toll Free: 1-800-668-6767 https://www.ec.gc.ca/paom-itmb/default.asp?lang=En&n=5f569149-1
Wellfield Protected Areas, Designated Watersheds, Environmentally Sensitive Areas	Department of Environment and Local Government PO Box 6000 Fredericton, NB E3B 5H1 Phone: 506-453-2690 http://www.gnb.ca/0009/index-e.asp
First Nations Lands	Indigenous and Northern Affairs Canada PO Box 160, 40 Havelock Amherst, Nova Scotia B4H 3Z3 Toll Free: 1-800-567-9604 http://www.aadnc-aandc.gc.ca/eng/1100100016942/1100100016946
Provincial Parks	Department of Tourism, Heritage and Culture P. O. Box 6000 Fredericton, NB E3B 5H1 Phone: (506) 444-4863 http://www.gnb.ca/0397/Index-e.asp
Municipalities	Department of Environment and Local Government

	<p>PO Box 6000 Fredericton, NB E3B 5H1 Phone: 506-453-2690 http://www.gnb.ca/0009/index-e.asp</p>
<p>Crown Lands (includes Commitments on Crown Lands, Crown Land Leases, etc.)</p>	<p>Department of Energy and Resource Development Crown Lands Branch PO Box 6000 Fredericton, NB E3B 5H1 Phone: (506) 453-3826 Toll Free: 1-888-312-5600 http://www2.gnb.ca/content/gnb/en/departments/erd/natural_resources.html</p>
<p>Protected Natural Areas</p>	<p>Department of Energy and Resource Development Fish & Wildlife Branch PO Box 6000 Fredericton, NB E3B 5H1 Phone: (506) 453-3826 http://www2.gnb.ca/content/gnb/en/departments/erd/natural_resources.html</p>