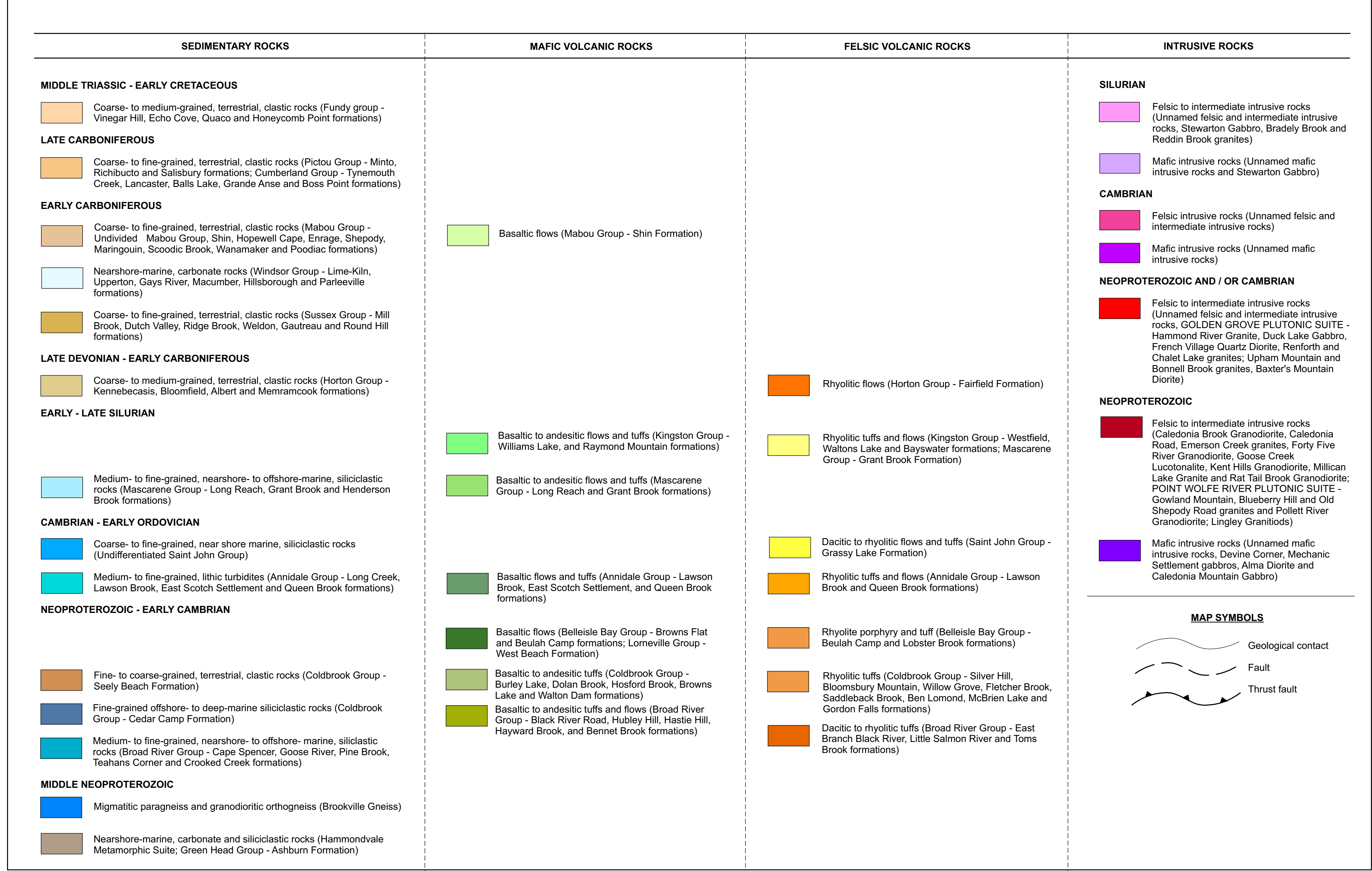


NR - 6
(Second Edition)



INDEX TO SELECTED MINERAL OCCURRENCES (with BNRDN Union Record Number)

FELIC PLACER-UNRELATED DEPOSITS (includes PORPHYRY, SKARN, AND HIGH-OR-LOW-SULPHIDATION TYPES)

- 41 HALEY BROOK WEST (640)
- 2 HALEY BROOK EAST (341)
- 4 NORTH TOWN VILLAGE (1317)
- 4 QUAKERSHET (517)
- 13 CHANDLER SETTLEMENT (1420)
- 6 HARRY BROOK NW (1433)

INTRAMAGMATIC DEPOSITS IN BASIC INTRUSIONS

- 7 MECHANIC SETTLEMENT 1 (M1C)
- 13 MECHANIC SETTLEMENT 3 (M1C3)

STRATABODOL VOLCANO-SEDIMENTARY BASE METAL SULPHIDE OR VEN DEPOSITS

- 9 JACK LAKE NORTH (25)
- 10 TEANIAN MINE (3)
- 3 LUNDEN (3)
- 12 ELGIN PROSPECT (664)

MARINE SEDIMENT-HOSTED STRATABODOL DEPOSITS

- 13 PEARABO CORNER (27)
- 41 CEDAR CAMP (25)
- 41 CEDAR CAMP (25)
- 41 MARSHWILLIE MINE (911)
- 13 TURTLE CREEK (179)
- 13 TURTLE CREEK (179)
- 13 TURTLE CREEK (179)
- 13 TURTLE CREEK (179)

NON-MARINE SEDIMENT-HOSTED STRATABODOL DEPOSITS (INCLUDING LOW-FRONT TYPES)

- 20 NEW HORTON 1 (1)
- 21 WARDIS CREEK (20)
- 22 DORCHESTER MINE (87)
- 23 MINNAP & CO FARM (851)
- 24 LOWER MILL PROSPECT (805)
- 25 REDWOOD (805)
- 27 MOUNT WHITNEY (770)
- 28 DORCHESTER CREEK (708)
- 29 BLACKBROOK BROOK (718)
- 31 SMITH CREEK (764)
- 31 BATHURST (1204)
- 33 JOEL BROOK (1325)
- 35 BREAU LAKE NORTH (1329)
- 35 PECKS POINT SOUTH (1330)
- 37 GREEN CREEK SOUTH (1332)
- 38 CAPE MANSION (1482 & 1381)
- 40 DEWOLLESE CREEK (1369)

PLACER AND PALFIOPI ACER DEPOSITS (INCLUDING RECENT NEAR- SOURCE ENRICHMENT TYPES)

- 41 BIG SALMON RIVER (3)
- 42 GORDEN CREEK (308)
- 43 TAYLOR VILLAGE (27)
- 44 TANTRAM CREEK (705)
- 45 MEMBRAND GOLD (723)
- 46 NAWYAGWAG (753)

QUARTZ-CARBONATE (± BARITE) VEINS AND/OR STOCKWORKS

- 47 QUAKERSHET (41)
- 41 BUCKLAW HILL (41)
- 40 GORE CREEK (29)
- 40 CAPE SPENCER MINE (33)
- 51 JONAS MOUNTAIN CREEK (41)
- 52 WEST BEACH GOLD (52)
- 53 GRANT BROOK (42) (523)
- 53 DEVIL PEAK BROOK (1952)
- 50 SPRING BROOK (35)
- 50 HENDERSON VILLAGE (51)
- 50 DICKSON BROOK & C (539)
- 50 DOWNLAND BROOK (948)
- 50 WEST RIVER (649)
- 50 BUCKLAW HILL (662)
- 50 QUAKERSHET (660)
- 50 QUAKERSHET (662)
- 50 PERSON MINE (662)
- 50 MILE BROOK & HOGAN WOLFE (663)
- 50 GOLD MINE GULLY (665)
- 50 MARSTOWN (682)
- 50 SHANNON (685)
- 50 UPPER DORCHESTER (700)
- 50 SHERIDY MOUNTAIN CREEK (713)
- 50 ANNIE (OLD DICK MINE) (755)
- 50 WINGBROOK (760)
- 52 EAST SCOTCH SETTLEMENT (765)
- 52 OBER (766)
- 52 OBER (766)
- 52 MIPRE-ROSEBUSH (783)
- 52 POWERS POINT (782)
- 52 BLACK RIVER - NORTH (789)
- 52 BLACK RIVER - SOUTH (WAGTONE CREEK) (799)
- 52 GORE CREEK (801)
- 52 MARTIN HEAD PROSPECT (802)
- 51 MARISOLD (808)
- 50 EVANS COVE (818)
- 52 EAST SCOTCH SETTLEMENT-B.P. (819)
- 50 MILLERS BROOK (821)
- 50 GRANT BROOK WEST (821)
- 50 LITTLE STRONG CREEK (821)
- 50 MILLERS BROOK (821)
- 50 DEVIL PEAK BROOK (1196)
- 50 M. BROOK (1210)
- 50 GORE CREEK ESTUARY (1212)
- 50 JONASBROOK BROOK (1213)
- 52 HAMILTON BROOK (1358)
- 53 ALBRIGHT BROOK (1360)
- 54 ROCKHOUT SHORE (1362)
- 53 SCOTCH MOUNTAIN (1363)
- 54 SPOONSHED (1380)
- 50 CAPE SPENCER BIG ZONE (1388)
- 50 CAPE SPENCER LAKE ZONE (1390)
- 50 WEST BEACH-BIG ZONES (1416)
- 50 CAPE (1416)
- 51 SHEARIT (1425)
- 502 HARRY BROOK (1426)

GEOLOGY COMPILATION FROM 1:50 000 MAP SERIES

BARR, S.M. and WHITE, C.E. 2005. Bedrock geology of the Cape Spencer area (NTS 211 H04), Saint John County, New Brunswick. New Brunswick Department of Natural Resources, Minerals, Policy and Planning Division. Plate 2005-44.

BARR, S.M. and WHITE, C.E. 2005. Bedrock geology of the Loch Lomond area (NTS 211 H05), Saint John and Kings counties, New Brunswick. New Brunswick Department of Natural Resources, Minerals, Policy and Planning Division. Plate 2005-45.

BARR, S.M. and WHITE, C.E. 2005. Bedrock geology of the Salmon River area (NTS 211 H06), Saint John County, New Brunswick. New Brunswick Department of Natural Resources, Minerals, Policy and Planning Division. Plate 2005-42.

BARR, S.M., WHITE, C.E., and ST. PETER, C.J. 2005. Bedrock geology of the Waterford area (NTS 211 H11), Saint John, Kings, and Antigonish counties, New Brunswick. New Brunswick Department of Natural Resources, Minerals, Policy and Planning Division. Plate 2005-44.

BARR, S.M., WHITE, C.E., ST. PETER, C.J., JOHNSON, S.C., and MCLEOD, M.J. 2005. Bedrock geology of the Keswick area (NTS 211 H12), Saint John County, New Brunswick. New Brunswick Department of Natural Resources, Minerals, Policy and Planning Division. Plate 2005-45.

JOHNSON, S.C. 2005. Bedrock geology of the Amherst area (NTS 211 H16 and part of 211 H09), Westmorland County, New Brunswick. New Brunswick Department of Natural Resources, Minerals, Policy and Planning Division. Plate 2005-43.

JOHNSON, S.C. and ST. PETER, C.J. 2005. Bedrock geology of the Cady's area (NTS 211 H13), Kings and Queens counties, New Brunswick. New Brunswick Department of Natural Resources, Minerals, Policy and Planning Division. Plate 2005-46.

ST. PETER, C.J., BARR, S.M., and WHITE, C.E. 2005. Bedrock geology of the Pictouhead area (NTS 211 H14), Kings, Westmorland, and Queens counties, New Brunswick. New Brunswick Department of Natural Resources, Minerals, Policy and Planning Division. Plate 2005-47.

ST. PETER, C.J., BARR, S.M., WHITE, C.E., and JOHNSON, S.C. 2005. Bedrock geology of the Alma area (NTS 211 H15), Albert County, New Brunswick. New Brunswick Department of Natural Resources, Minerals, Policy and Planning Division. Plate 2005-43.

ST. PETER, C.J., JOHNSON, S.C., BARR, S.M., and WHITE, C.E. 2005. Bedrock geology of the Hilsborough area (NTS 211 H10), Albert and Westmorland counties, New Brunswick. New Brunswick Department of Natural Resources, Minerals, Policy and Planning Division. Plate 2005-45.

ST. PETER, C.J. 2006. Geological relationship between the Cogenise Subbasin and Indian Mountain Deformed Zone, Maritimes Basin, New Brunswick. In Geological Investigations in New Brunswick for 2005. Edited by J. Martin. New Brunswick Department of Natural Resources, Minerals, Policy and Planning Division. Mineral Resource Report 2006-3, p. 103-183.